

ROBERTSTOWN (BAILE RIOBAIRD)

HISTORY AND EVOLUTION

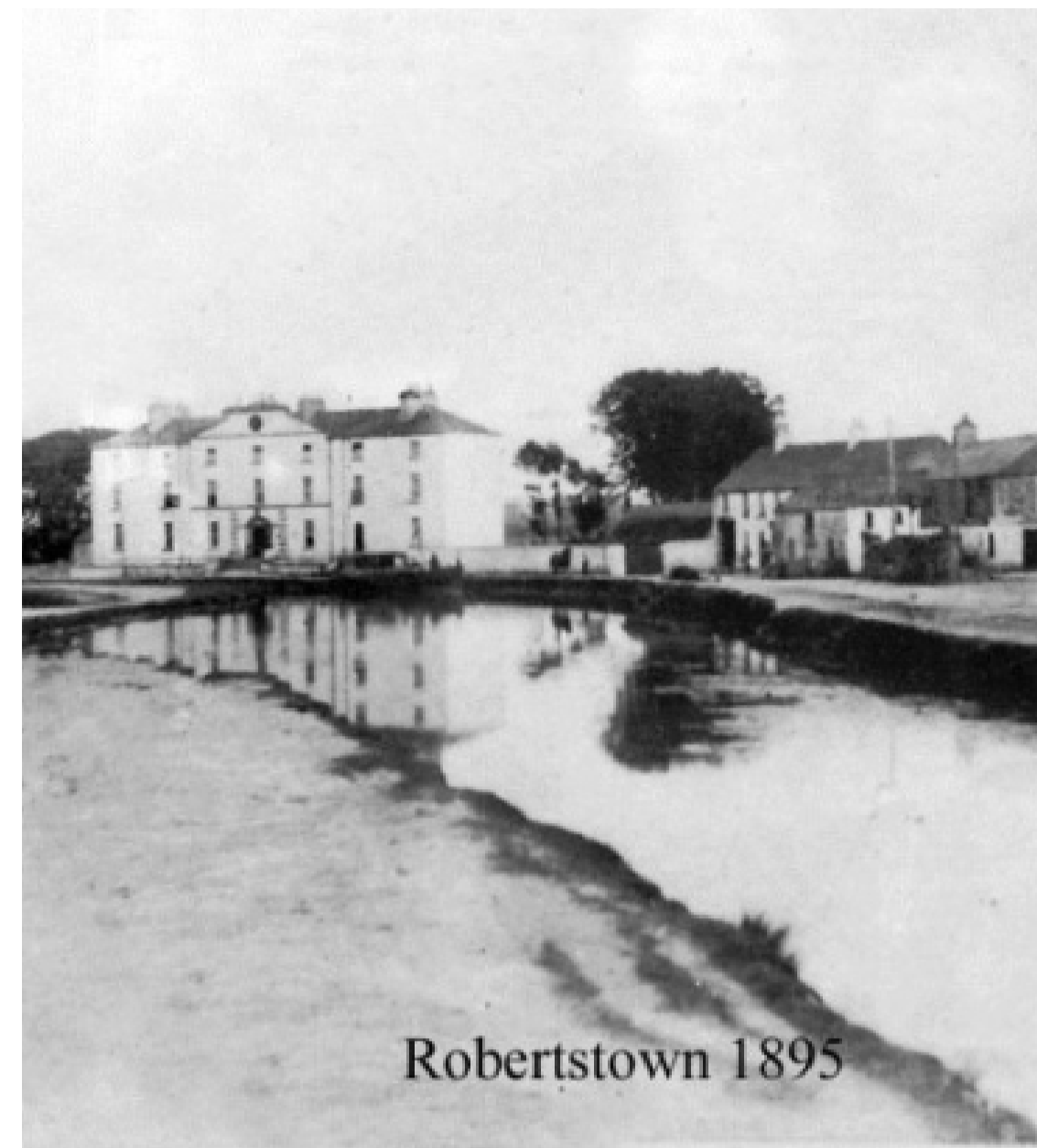
1785
Construction of the Grand Canal at Robertstown, which functioned as a commercial cargo destination until 1960

1801-1865

- Grand Canal Hotel was built in 1801. The former hotel was leased by the Royal Irish Constabulary in 1905.
- The village also witnessed settlement expansion.

TODAY

Potential for future tourism and settlement growth through the proposals such as Ecological Park, Blue Barrow Way trails and the Grand Canal Greenway.



Former Grand Canal Hotel in 1895
Source: Conroy Collection



Robertstown in the 1960s
Source: Conroy Collection

ROBERTSTOWN TODAY

Robertstown (Baile Riobaird) is a village rich with tourism and canal-oriented assets, with a strong sense of community. Positioned approximately 14 km from Naas, the village acts as a local service centre, and has established facilities including Robertstown School, GAA Club, Lowtown Marina and a planned Ecological Park. It is rich in architectural heritage with several protected structures illustrating the rich heritage and history of the area. Acknowledging the tourism and canal oriented potentials of the village, VHA identify a strong opportunity, through public realm interventions, to further enhance the strong sense of identity and place, thus further encouraging Robertstown as a place to live, work and visit.

CONSIDERATIONS



Road space and pedestrian realm with potential for improvement



Car-dominated streetscape



Connect open spaces and destinations



Utilise and celebrate existing public realm



Laneway enhancement potential



Prioritise pedestrian safety



Poor sense of canal front connectivity



Potential to activate under-utilised sites within village core

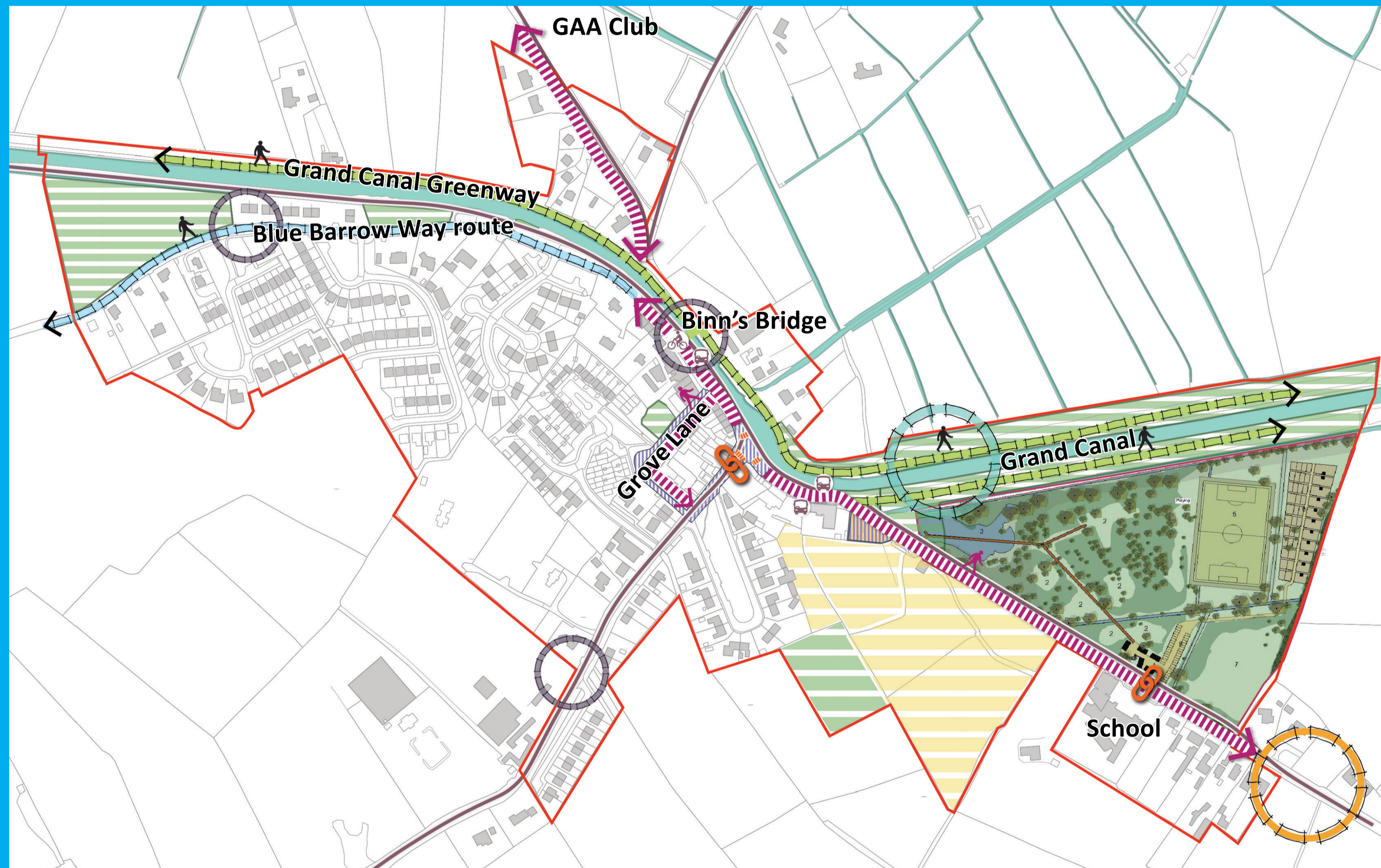


Greenway and Blue Barrow Way connectivity

OPPORTUNITIES

VISION

To create a re-defined sense of identity for Robertstown and amplify its potential as a tourism and canal-oriented amenity destination. To create a robust village core that encourages a re-defined relationship between the canal, the village core streetscape and its people.



Key

- | | | |
|--------------------------------|---|--------------------|
| Study Area | Proposed Blue Barrow Way route | Serviced sites |
| Grand Canal | Key destinations | Primary gateways |
| Bus stop location | Existing consented planning application | Secondary gateways |
| Regional bus routes | Connected pedestrian realm | Canal gateway |
| Existing pedestrian crossings | Hard surface public realm | |
| Potential pedestrian crossings | Green space, amenity opportunities | |
| Potential pedestrian links | | |

ROBERTSTOWN INDICATIVE PROPOSALS

PROJECT AREA PLAN



Draft indicative design proposal (subject to further discussions with third party land owners, and design development, as appropriate)

Key

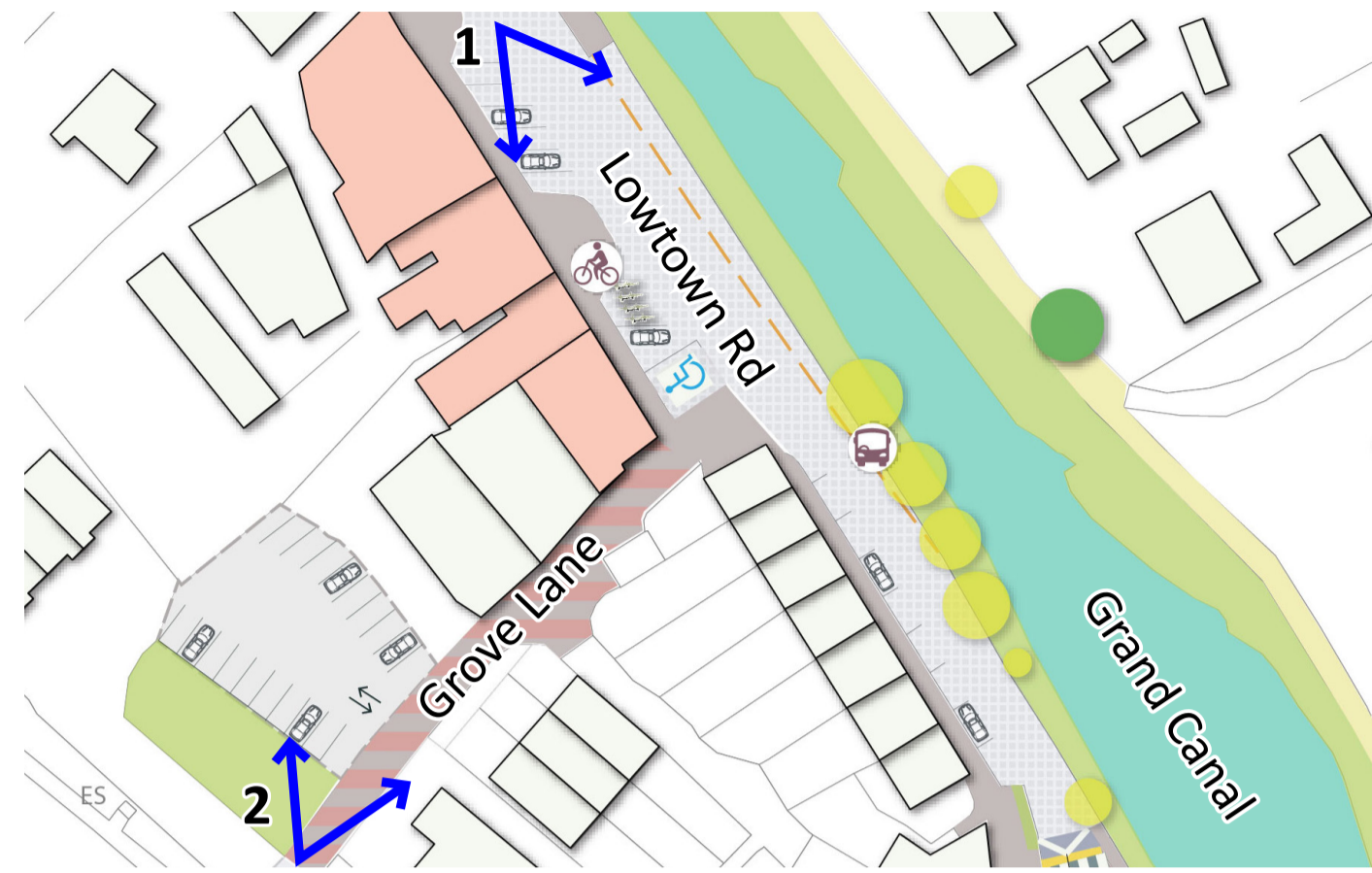
- | | | |
|------------------------------------|---|---|
| Pedestrian realm | Proposed raised table | public realm |
| Grove lane enhancement opportunity | Proposed pedestrian crossing | Existing retail areas |
| Existing roads | Existing trees | Proposed dedicated cycle parking |
| Existing track | Existing mature trees (to be protected) | Proposed new dedicated surface car park |
| Existing dedicated green spaces | Proposed enhanced canal front | |

OPTION 1 RECOMMENDATIONS

- Enhance the public realm on Lowtown Road through extending pockets of the existing pavement for outdoor seating.
- Provide vehicle calming measures such as planting measures and a raised table in the Main Street and Grove Lane junction to lower vehicle speeds entering the village core.
- Create a shared surface streetscape on Lowtown Road and Main Street to enhance and integrate the Grand Canal with the streetscape.
- Provide a pedestrian crossing on Lowtown Road to enhance connectivity between the Grand Canal and the village core.
- Consider the possibility of creating functional green spaces near Grove Lane for sustainable use by the community such as community garden, poly-tunnel, etc.

ROBERTSTOWN INDICATIVE PROPOSALS

PROJECT AREA 1: LOWTOWN ROAD



RECOMMENDATIONS

- Improve the interface relationship between the streets and Canal-front via introduction of streetscape improvements, and public realm enhancement
- Enhance the pedestrian realm along Lowtown Road by introducing seating spaces, urban planting and introducing high-quality paving and materials
- Install a new pedestrian crossing on Lowtown Road, prioritising safe pedestrian movement
- Reduce dominance of vehicles along Lowtown Road by re-locating car-parking spaces to a dedicated parking area in Grove Lane
- Introduce dedicated cycle parking facilities on the Main Street and Lowtown Road, encouraging a modal shift.



Draft indicative design proposal (subject to further discussions with third party land owners, and design development, as appropriate)

PROJECT AREA 2: GROVE LANE

RECOMMENDATIONS

- Respond to Council policy objectives, and provide a destination play area, adjacent to established residential, with natural surveillance and sense of security ensured
- Enhance the pedestrian experience by providing high quality paving and planting along Grove Lane.
- Utilise and activate under-utilised lands on Grove Lane, and provide for a dedicated surface car parking area, within very close walking proximity to Main Street.



Draft indicative design proposal (subject to further discussions with third party land owners, and design development, as appropriate)