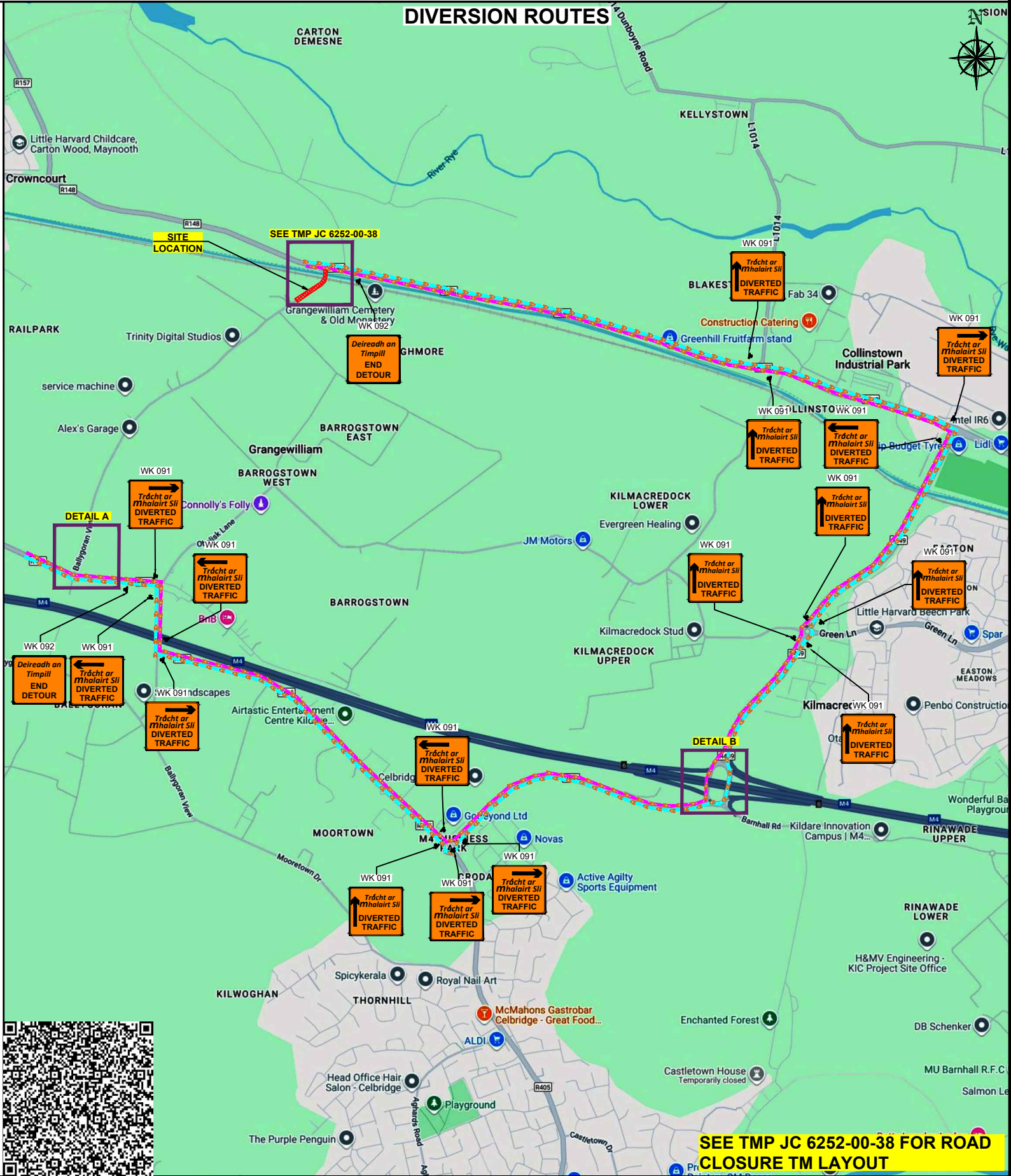
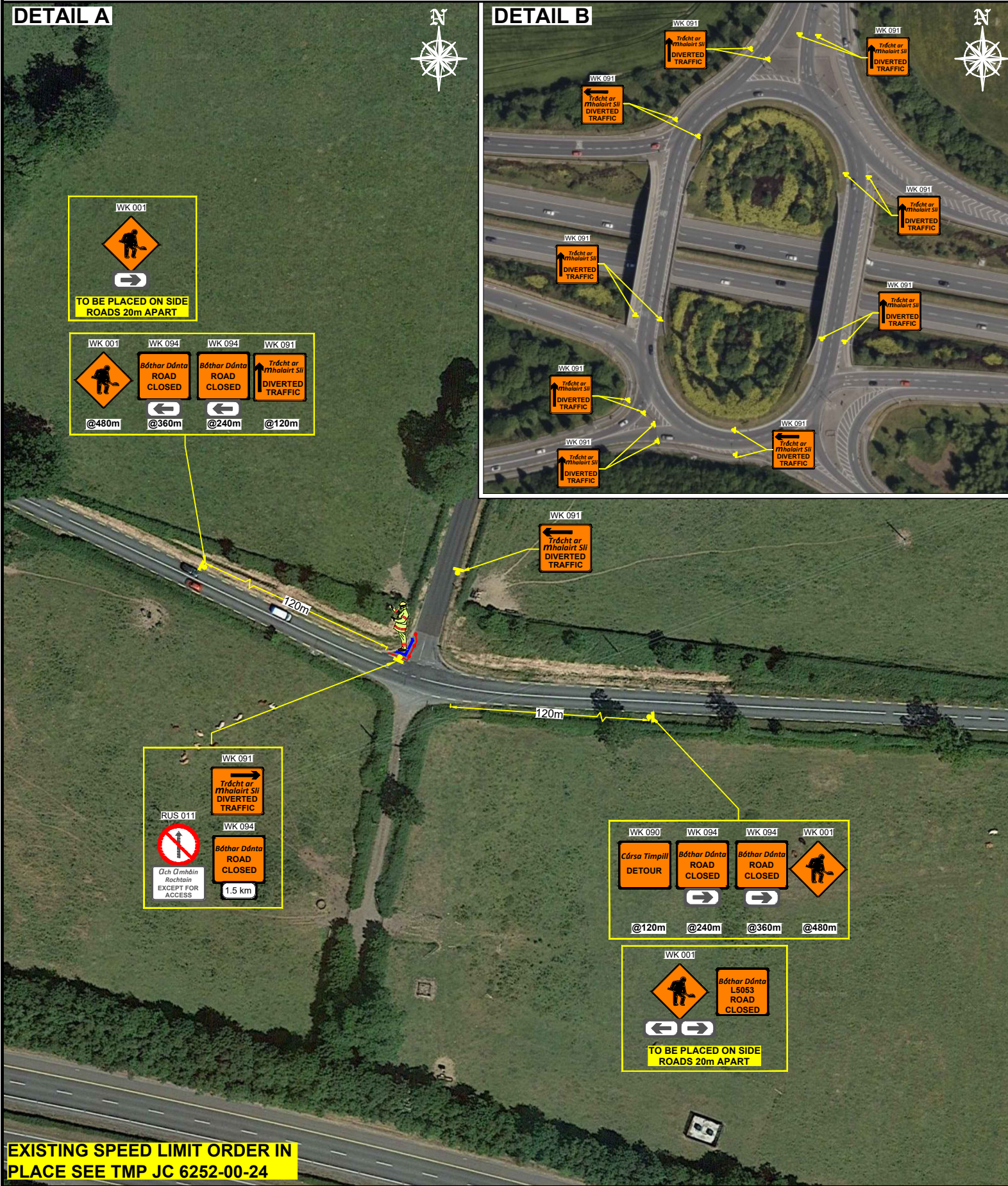


PIKE BRIDGE, R148, CO. KILDARE - ROAD CLOSURE TM LAYOUT

DETAIL A



GKTM
GARY KEVILLE TRAFFIC MANAGEMENT LTD.
Rosemount Business Park, Dublin 11, Co. Dublin, Ireland
Tel: (+3531) 667 4322; Email: info@gktm.ie
Visit us at: www.gktm.ie

GLAS
CIVIL ENGINEERING LTD.

DESIGNED: BM	SCALE: NTS	PROJECT TITLE: THE ROYAL CANAL GREENWAY MAYNOOTH TO CONFEE	
DRAWN: BM	DATE: 18-03-2025	DRAWING NAME: PIKE BRIDGE, R148, CO. KILDARE - ROAD CLOSURE TM LAYOUT	
VERIFIED: SS	STAGE: CONSTRUCTION	DWG. No.: JC 6252-00-37	REV: 0
APPROVED: SS	Rev. No.: Revision Details	Rev. Date:	Designed: Drawn: Verified: Approved:

Copyright Notes: THIS DRAWING IS THE PROPERTY OF GARY KEVILLE TRAFFIC MANAGEMENT. THE DESIGN INFORMATION CONTAINED HEREIN IS STRICTLY CONFIDENTIAL. THIS DOCUMENT IS NOT TO BE USED, REPRODUCED, DISCLOSED OR CIRCULATED IN WHOLE OR IN PART WITHOUT THE WRITTEN CONSENT IN EACH INSTANCE OF GARY KEVILLE TRAFFIC MANAGEMENT. © GKTM 2025

1) ALL INFORMATION CONTAINED IN THIS DRAWING SHOULD BE CHECKED AND VERIFIED BY CONTRACTOR PRIOR TO ANY STAGE OF CONSTRUCTION.

2) ALL WORKS ARE TO BE CARRIED OUT IN ACCORDANCE WITH LOCAL AUTHORITY REQUIREMENTS AND ARE TO BE INCLUDED IN THE SITE-SPECIFIC SAFETY & HEALTH PLAN.

3) CONTRACTOR TO CARRY OUT A SITE RISK ASSESSMENT PRIOR TO THE INSTALLATION OF ANY TRAFFIC MANAGEMENT PLAN TO ENSURE THAT CONDITIONS REFLECT THOSE CONSIDERED FOR DESIGN POST SUBMISSION.