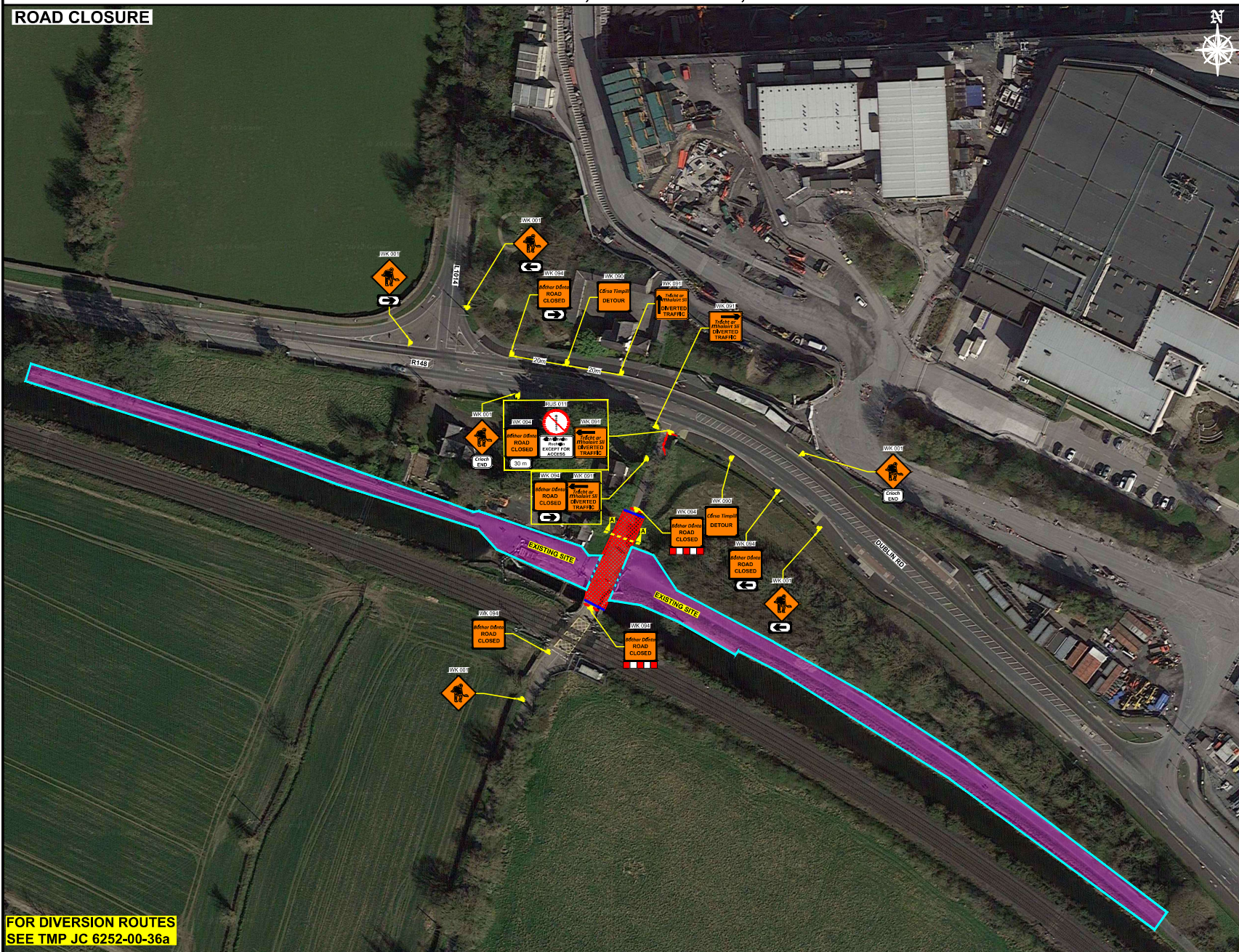


DEEY BRIDGE, COLLINSTOWN, CO. KILDARE - ROAD CLOSURE TTM LAYOUT

ROAD CLOSURE



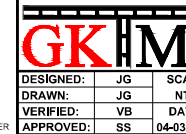
FOR DIVERSION ROUTES
SEE TMP JC 6252-00-36a

DESIGN PARAMETERS				SAFETY ZONE				TEMPORARY SIGNS				CONE SPACING AND SIZE				RATE OF TAPER		LAMP SPACING		TRAFFIC MANAGEMENT SYSTEM			
Road Lvl(Sub)	Roadworks Type	Speed Limit (km/h)	Min. Lane Width (m)	Longitudinal (m)	Lateral (m)	Set Back (m)	Distance (m)	Number	Min. Size (mm)	Sign Visibility (m)		Longitudinal (m)	At Tapers (m)	Min. Height (mm)	Taper at H/S (m)	Taper at Lane (m)	At Tapers (m)	Longitudinal (m)	Method	Coned Area Length (m)	Max. Traffic Flow (veh/h)		
1 (IV)	A	60	3.00	15	0.5	-	20	3	600	60	6	6	1	750	45°	45°	6	12	Road Closure	n/a	n/a		

NOTES

- 1) ALL INFORMATION CONTAINED IN THIS DRAWING SHOULD BE CHECKED AND VERIFIED BY CONTRACTOR PRIOR TO ANY STAGE OF CONSTRUCTION.
- 2) ALL WORKS ARE TO BE CARRIED OUT IN ACCORDANCE WITH LOCAL AUTHORITY REQUIREMENTS AND ARE TO BE INCLUDED IN THE SITE-SPECIFIC SAFETY & HEALTH PLAN.
- 3) A SITE-SPECIFIC RISK ASSESSMENT SHALL BE CONDUCTED PRIOR TO IMPLEMENTING THE TEMPORARY TRAFFIC MANAGEMENT PLAN TO ENSURE THAT THE ACTUAL SITE CONDITIONS ALIGN WITH THOSE CONSIDERED DURING THE DESIGN PHASE FOLLOWING SUBMISSION.
- 4) CONTRACTOR SHALL BE RESPONSIBLE FOR THE PROVISION OF RAMP ACCESS AT ANY CHANGE IN ROAD SURFACE LEVEL WHERE TRAFFIC RUNS ON A TEMPORARY SURFACE.
- 5) THIS TRAFFIC MANAGEMENT PLAN MAY ONLY BE IMPLEMENTED BY A TTOS WHO MUST CARRY OUT A RISK ASSESSMENT BEFORE IMPLEMENTATION. TTOS MUST BE IN POSSESSION OF CSOS CARD 'SIGNING, LIGHTNING AND GUARDING AT ROAD WORKS' CONSTRUCTION REGULATIONS 2008.
- 6) EXACT SIGN POSITIONS TO BE AGREED ON SITE.
- 7) ACCESS TO BE MAINTAINED TO ALL DWELLINGS / BUSINESSES AT ALL TIMES.
- 8) SITE INSPECTIONS AND MAINTENANCE OF THE TRAFFIC MANAGEMENT LAYOUT IS TO BE CONDUCTED ON A DAILY BASIS TO ENSURE THE SAFETY AND INTEGRITY OF THE DESIGN.
- 9) ALL TEMPORARY FOOTWAYS MUST HAVE A GOOD QUALITY, EVEN SURFACE AND BE MAINTAINED FREE FROM OBSTRUCTION.
- 10) PEDESTRIANS TO BE PROTECTED FROM WORKS AREA BY PEDESTRIAN BARRIER SYSTEM.
- 11) TM OPERATIVES TO MANAGE SITE ACCESS/EGRESS AND MARSHAL PEDESTRIANS DURING WORKS HOURS.
- 12) RESIDENT TO BE INFORMED BEFORE COMMENCING THE WORKS.
- 13) TM OPERATIVES TO MAINTAIN CLOSURE, MANAGE SITE ACCESS/EGRESS AND MARSHAL PEDESTRIANS DURING WORKS HOURS.

LEGEND	
● ● ● ● ●	TRAFFIC CONES
—	SIGN LOCATION
■ ■ ■ ■ ■	WORKS AREA
—	EXISTING SITE
—	SAFETY ZONE
—	PEDESTRIAN BARRIER
—	SITE FENCE/BOUNDARY
—	PEDESTRIAN ROUTE
—	SITE ACCESS GATE



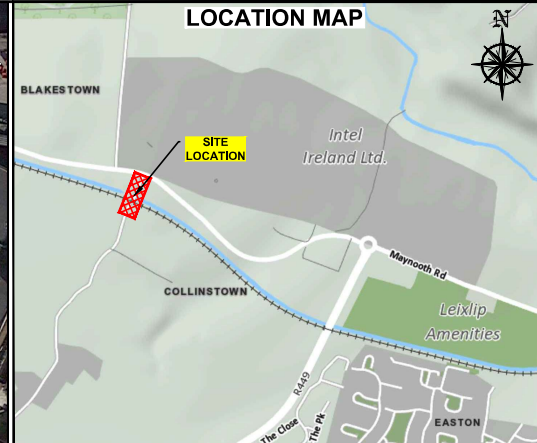
GARY KEVILLE TRAFFIC MANAGEMENT LTD.
Rosemount Business Park, Dublin 11, Co. Dublin, Ireland
Tel: (+3531) 667 4322; Email: info@gktm.ie
Visit us at: www.gktm.ie

CLIENT:

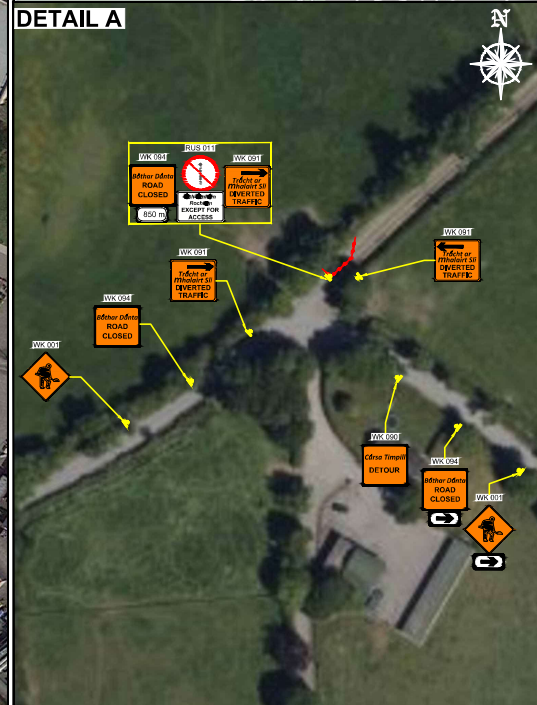


DESIGNED: JG				SCALE		PROJECT TITLE: THE ROYAL CANAL GREENWAY MAYNOOTH TO CONFEE			
DRAWN: JG				NTS		DRAWING NAME: DEEY BRIDGE, COLLINSTOWN, CO. KILDARE - ROAD CLOSURE TTM LAYOUT			
VERIFIED: VB				DATE: 04-03-2025		STAGE: CONSTRUCTION			
APPROVED: SS						DWG. No.: JC 6252-00-36			
Rev. No.	Revision Details				Rev. Date:	Designed:	Drawn:	Verified:	Approved:
1									
2									
3									
4									
5									
6									
7									
8									
9									
10									
11									
12									
13									
14									
15									
16									
17									
18									
19									
20									
21									
22									
23									
24									
25									
26									
27									
28									
29									
30									
31									
32									
33									
34									
35									
36									
37									
38									
39									
40									
41									
42									
43									
44									
45									
46									
47									
48									
49									
50									
51									
52									
53									
54									
55									
56									
57									
58									
59									
60									
61									
62									
63									
64									
65									
66									
67									
68									
69									
70									
71									
72									
73									
74									
75									
76									
77									
78									
79									
80									
81									
82									
83									
84									
85									
86									
87									
88									
89									
90									
91									
92									
93									
94									
95									
96									
97									
98									
99									
100									

Copyright Notes:
THIS DRAWING IS THE PROPERTY OF GARY KEVILLE TRAFFIC MANAGEMENT LTD.
THIS DRAWING IS STRICTLY CONFIDENTIAL.
REPRODUCED, DISCLOSED OR CIRCULATED IN WHOLE OR IN PART WITHOUT THE PRIOR WRITTEN CONSENT IN EACH CASE OF GARY KEVILLE TRAFFIC MANAGEMENT LTD. IS STRICTLY PROHIBITED.



DETAIL A



SECTION A-A

