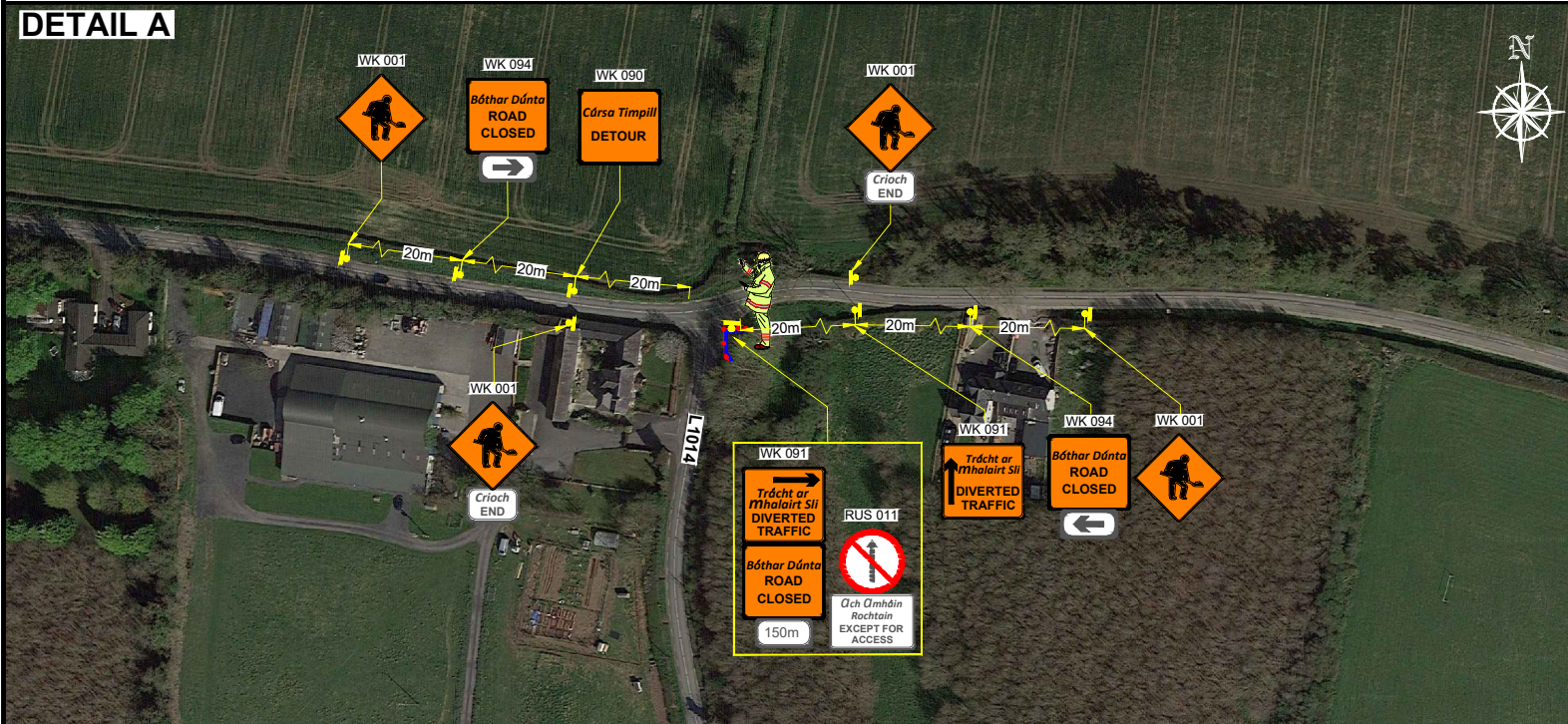
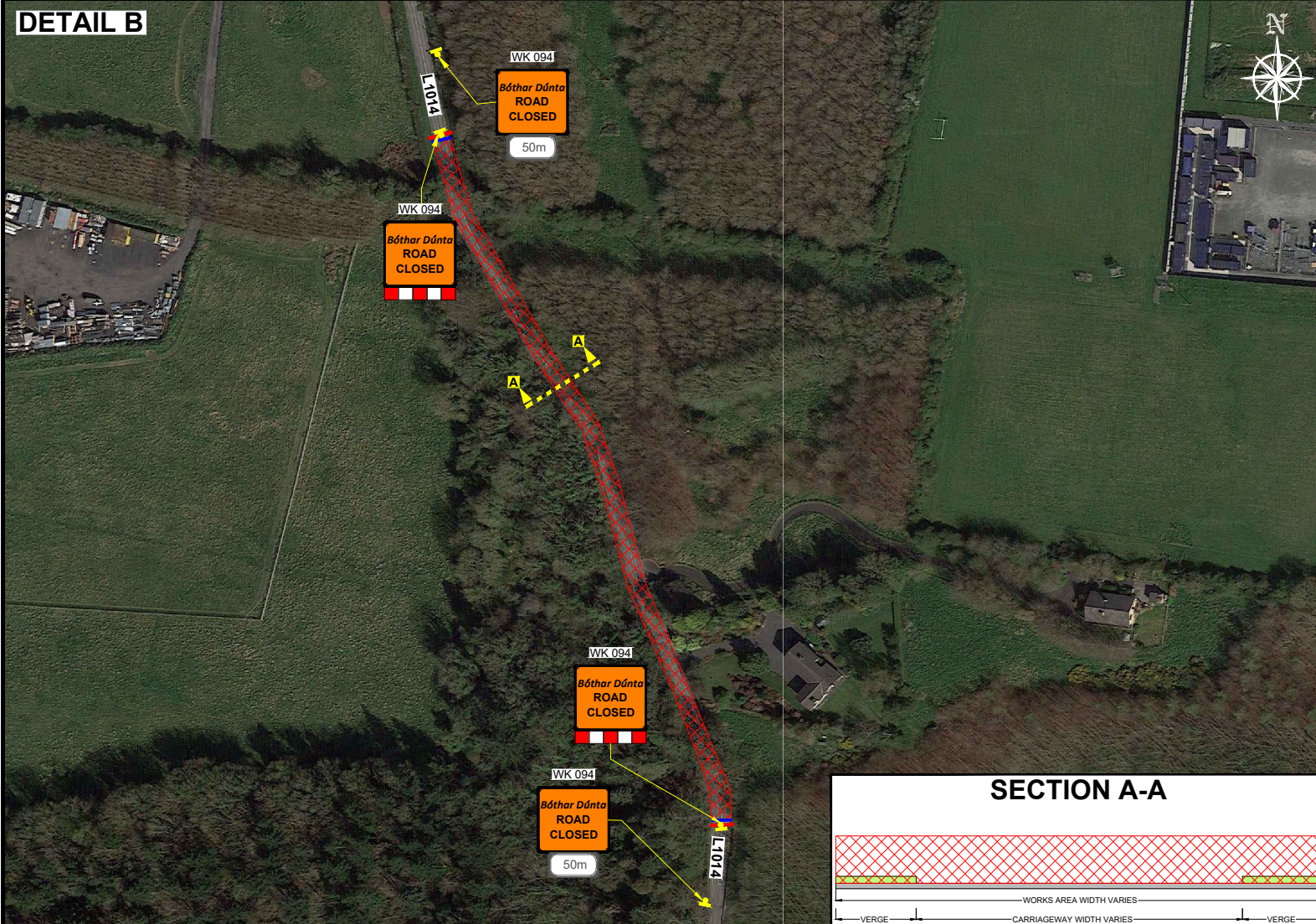


**L1014, COLLINSTOWN INDUSTRIAL PARK, CO. KILDARE - NBI CABLE WORKS**

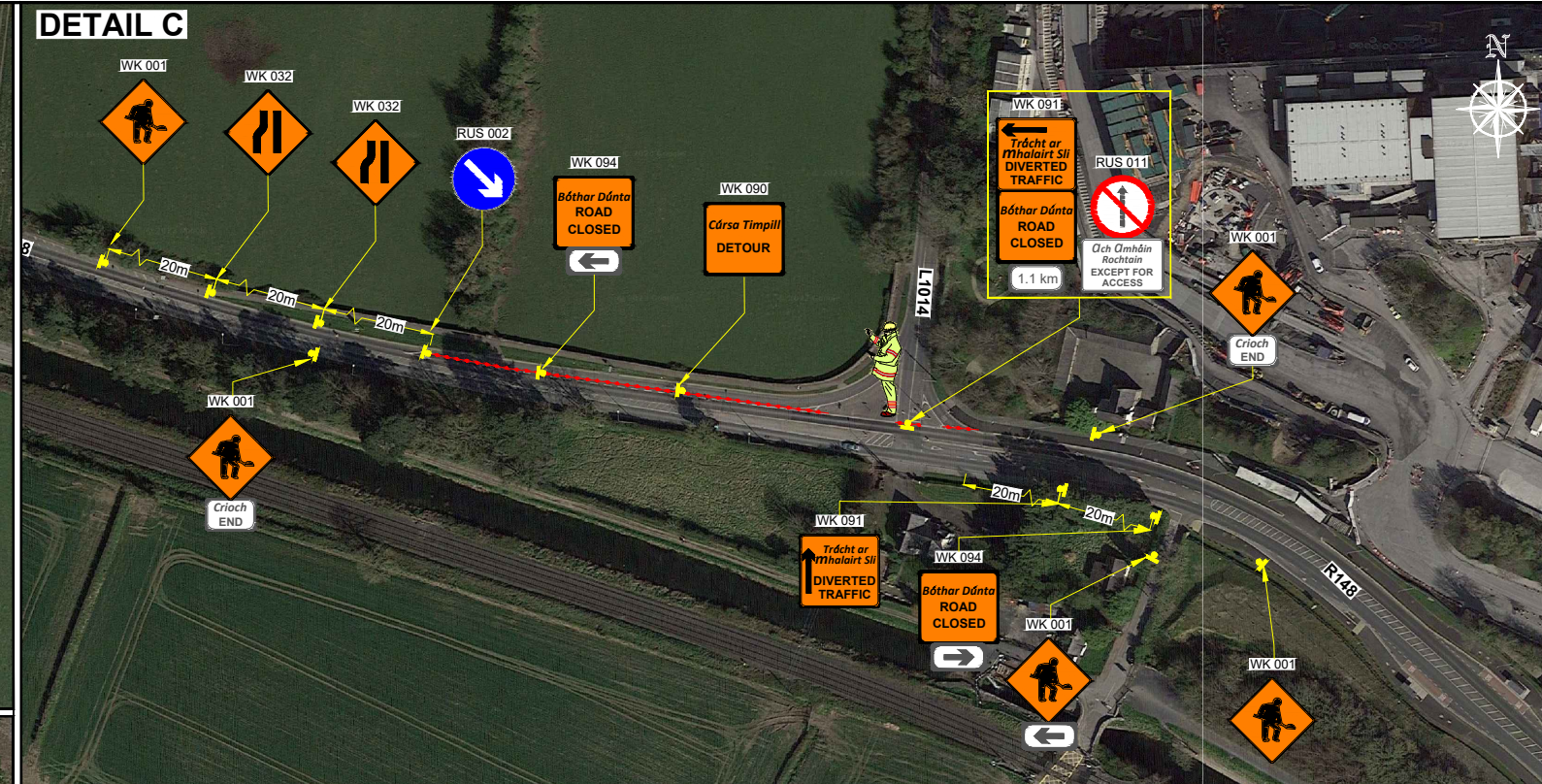
## DETAIL A



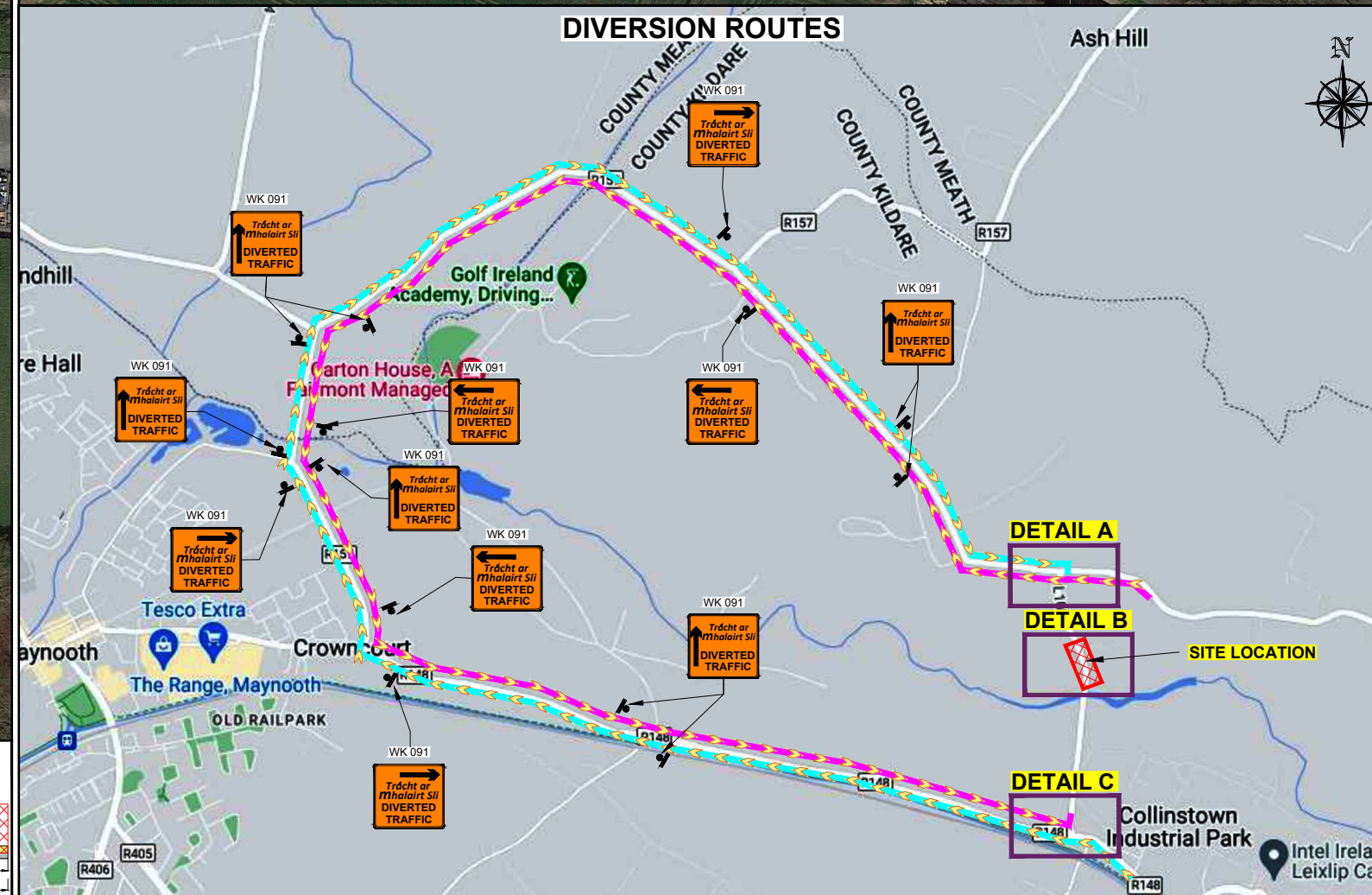
### DETAIL B



### DETAIL C









## DIVERSION ROUTES



Design Parameters				Safety Zone			Temporary Signs				Cone Spacing and Size			Rate of Taper		Lamp Spacing		Traffic Management System		
Road Lvl(Sub)	Roadworks Type	Speed Limit (km/h)	Min. Lane Width (m)	Longitudinal (m)	Lateral (m)	Set Back (m)	Distance (m)	Number	Min. Size (mm)	Sign Visibility (m)	Longitudinal (m)	At Tapers (m)	Min. Height (mm)	Taper at H/S (m)	Taper at Lane (m)	At Tapers (m)	Longitudinal (m)	Method	Coned Area Length (m)	Max. Traffic Flow (veh/h)
1(iv)	A	60	3.00	15	0.5	-	20	3	600	60	6	3	750	1 in 10	1 in 10	6	12	Road Closure	n/a	n/a

### LEGEND

-  - TRAFFIC CONES
-  - SIGN LOCATION
-  - WORKS AREA
-  - PEDESTRIAN BARRIER
-  - DIVERSION ROUTE
-  - DIVERSION ROUTE

**GK M** **GARY KEVILLE TRAFFIC MANAGEMENT LTD.**  
Rosemount Business Park, Dublin 11, Co. Dublin, Ireland  
Tel: (+3531) 667 4322; Email: [info@gkmt.ie](mailto:info@gkmt.ie)  
Visit us at: [www.gkmt.ie](http://www.gkmt.ie)

CLIENT: 

DESIGNED:	BJ	SCALE	PROJECT TITLE: L1014, COLLINSTOWN INDUSTRIAL PARK, CO. KILDARE		
DRAWN:	BJ	NTS	DRAWING NAME: NBI CABLE WORKS		
VERIFIED:	SS	DATE:			
APPROVED:	SS	16.08.2023	STAGE: CONSTRUCTION	DWG. No.: JC 5146-00-38	REV: 0

Rev. No.:	Revision Details	Rev. Date:	Designed:	Drawn:	Verified:	Approved:	Copyright Notes:
							THIS DRAWING IS THE PROPERTY OF GARY KEVILLÉ TRAFFIC MANAGEMENT. THE DESIGN INFORMATION CONTAINED HEREIN IS STRICTLY CONFIDENTIAL. THIS DOCUMENT IS NOT TO BE USED REPRODUCED, DISCLOSED OR CIRCULATED WHOLE OR IN PART WITHOUT THE PRIOR WRITTEN CONSENT IN EACH INSTANCE OF GARY KEVILLÉ TRAFFIC MANAGEMENT.

1) ALL INFORMATION CONTAINED IN THIS DRAWING SHOULD BE CHECKED AND VERIFIED BY CONTRACTOR PRIOR TO ANY STAGE OF CONSTRUCTION.

2) ALL WORKS ARE TO BE CARRIED OUT IN ACCORDANCE WITH LOCAL AUTHORITY REQUIREMENTS AND ARE TO BE INCLUDED IN THE SITE-SPECIFIC SAFETY & HEALTH PLAN.

3) CONTRACTOR TO CARRY OUT A SITE RISK ASSESSMENT PRIOR TO THE INSTALLATION OF ANY TRAFFIC MANAGEMENT PLAN TO ENSURE THAT CONDITIONS REFLECT THOSE CONSIDERED FOR DESIGN POST SUBMISSION.

4) CONTRACTOR SHALL BE RESPONSIBLE FOR THE PROVISION OF RAMP ACCESS AT ANY CHANGE IN ROAD SURFACE LEVEL WHERE TRAFFIC RUNS ON A TEMPORARY SURFACE.

5) THIS TRAFFIC MANAGEMENT PLAN MAY ONLY BE IMPLEMENTED BY A TTOS WHO MUST CARRY OUT A RISK ASSESSMENT BEFORE IMPLEMENTATION. TTOS MUST BE IN POSSESSION OF CSCS CARD "SIGNING, LIGHTNING AND GUARDING AT ROAD WORKS" CONSTRUCTION REGULATIONS 2006.

6) EXACT SIGNS POSITIONS TO BE AGREED ON SITE.  
7) ACCESS TO BE MAINTAINED TO ALL DWELLINGS /  
BUSINESSES AT ALL TIMES.

8) SITE INSPECTIONS AND MAINTENANCE OF THE TRAFFIC MANAGEMENT LAYOUT IS TO BE CONDUCTED ON A DAILY BASIS TO ENSURE THE SAFETY AND INTEGRITY OF THE DESIGN.

9) ALL TEMPORARY FOOTWAYS MUST HAVE A GOOD QUALITY, EVEN SURFACE AND BE MAINTAINED FREE FROM OBSTRUCTION.

10) WHERE A SITE-SPECIFIC SURVEY HAS NOT BEEN CARRIED OUT

GKTM LTD., THE COMPANY DOES NOT ACCEPT THE APPOINTMENT  
TM DESIGNER FOR THE PROJECT. ANY TTMLD PRODUCED BY GKTM  
LTD. IS FOR THE PRELIMINARY SAFETY PLAN ONLY AND MUST BE  
FURTHER DEVELOPED BY A TM DESIGNER APPOINTED BY THE MA

11) TM OPERATIVES TO MAINTAIN CLOSURE, MARSHAL PEDESTRIANS AND INFORM DRIVERS ABOUT DIVERSION ROUTES DURING WORK HOURS.

12) RESIDENTS TO BE INFORMED BEFORE COMMENCING THE WORKS.

	REV: 0
--	--------

**Copyright Notes:**  
THIS DRAWING IS THE PROPERTY OF GARY  
KEVILLE TRAFFIC MANAGEMENT.  
THE DESIGN INFORMATION CONTAINED

THIS DOCUMENT IS NOT TO BE USED,  
REPRODUCED, DISCLOSED OR CIRCULATED  
WHOLE OR IN PART WITHOUT THE PRIOR  
WRITTEN CONSENT IN EACH INSTANCE OF

GARY KEVILLE TRAFFIC MANAGEMENT.  
© GKT 2022