



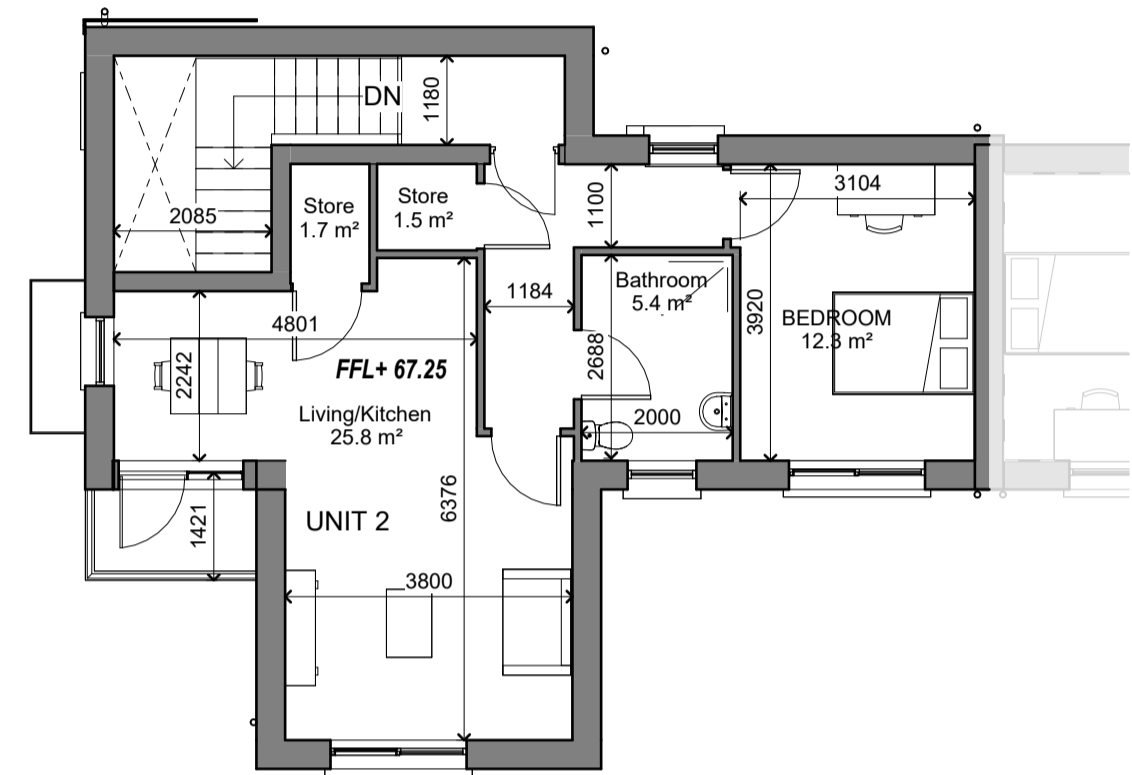
1 ELEVATION 1-UNITS 1&2
1 : 100



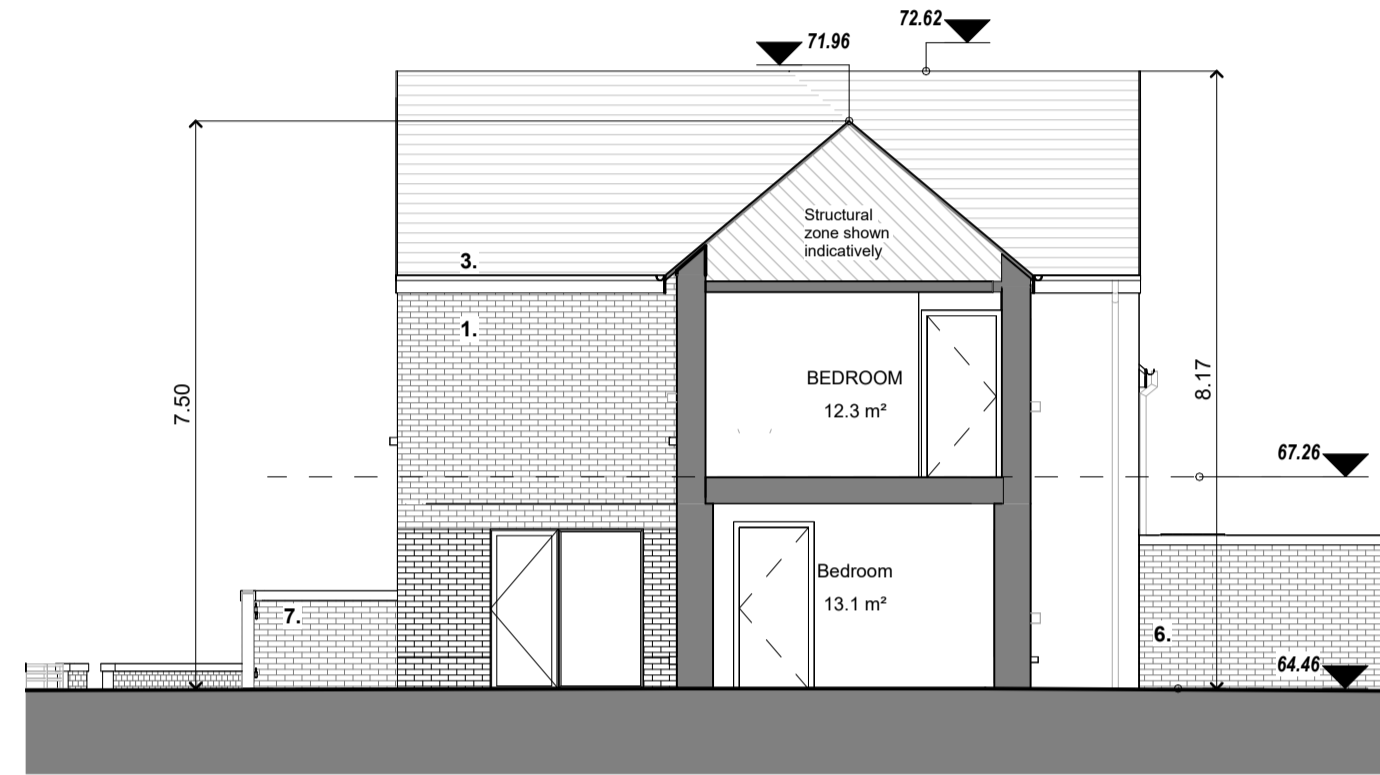
B SECTION BB UNITS 1&2
1 : 100



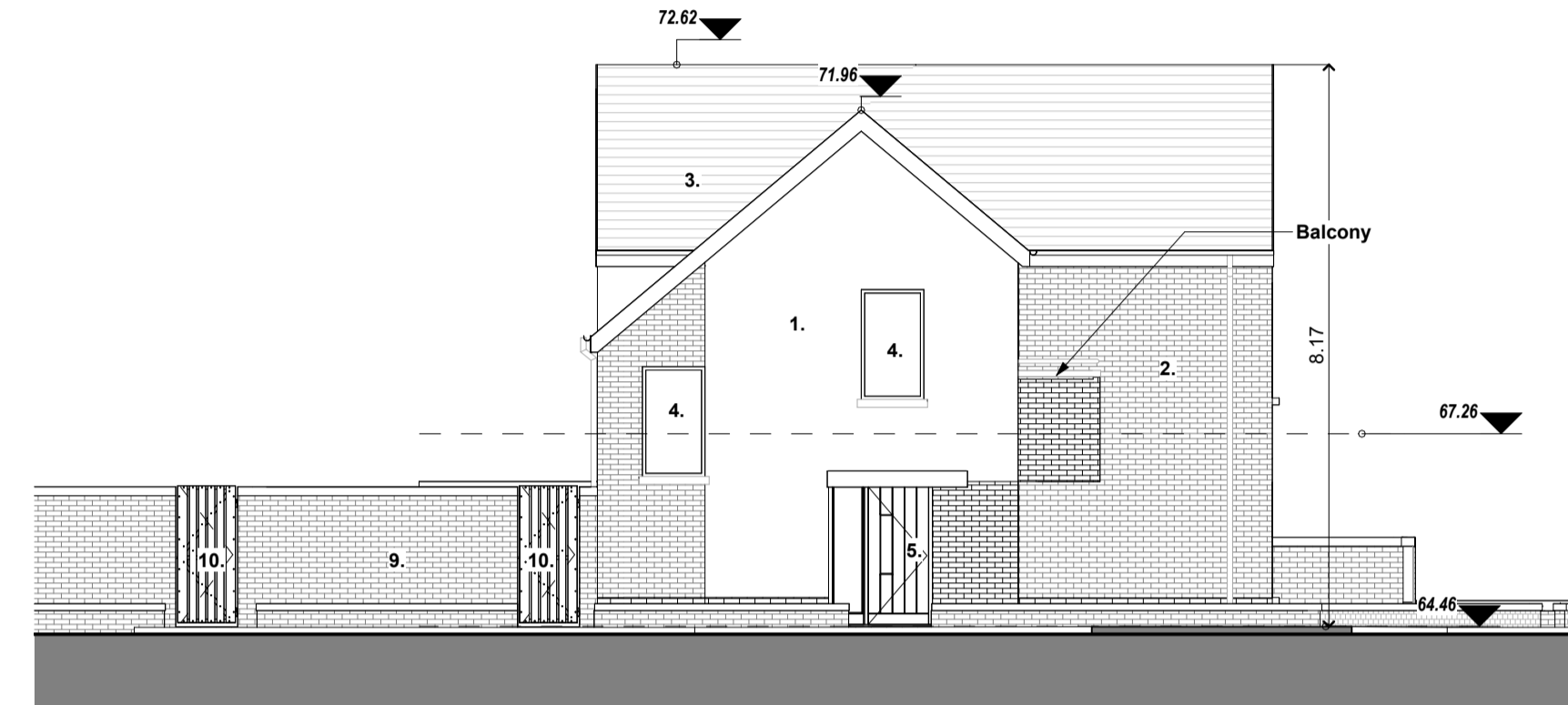
ELEVATION 3-UNITS 1&2
1 : 100



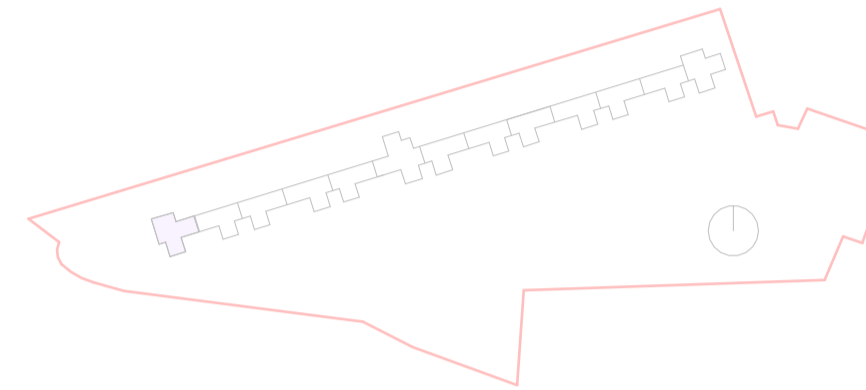
FIRST FLOOR UNIT 2
1 : 100



A SECTION AA UNITS 1&2
1 : 100



ELEVATION 2-UNITS 1&2
1 : 100



EXTERNAL WALLS - selections tbc
1. Acrylic render finish.
2. Facing brick.

ROOF - selections tbc
3. Tiled pitched roof. Aluminium accessories

EXTERNAL WINDOWS/DOORS - selections tbc
4. Triple glazed aluminium/timber frame windows. No opening sections in rear windows to mitigate noise.
5. Timber/composite doors. canopy over front entrance doors

GARDEN WALLS - selections tbc
6. Masonry render finish wall and capping.
7. Masonry wall and capping with metal railing inset as elevations. Exposed facing brick base, render finish above.
8. Street boundary metal railing.
9. Brick wall with concrete capping.
10. Galvanised steel framed gate with timber/recycled plastic timber effect cladding.

Refer to General Arrangement plans and elevations for locations and extents. All finishes to be in line with Employer's Requirements for Detail Design of Quality Housing (2019).

KEY Site Services

- Foul water drainage main connection and final inspection chamber (FIC)
- Surface water drainage main connection and inspection chamber (SIC)

NOTE: Site wide services as per Engineer's design and specification. Shown indicatively only. Please refer to Engineer's latest information for exact locations and types.

PART 8

- Notes:
- This drawing has been prepared for PART 8 only
 - All drawings to be read in conjunction with all other consultant drawings. Architect to be informed immediately of any discrepancies
 - Figured dimensions only to be taken from this drawing. All dimensions and levels to be checked on site. Architect to be informed immediately of any discrepancies

REVISION

REV	NOTES	DATE
P2	Draft issue to acoustician	19/07/23
P3	Draft issue for information	21/07/23
P4	STAGE 2 issue	08/11/23
P5	STAGE 2 revised	20/12/23

Kildare County Council,
Architectural Services Section,
Devoy Park,
Naas,
Co. Kildare



Project:
Proposed 15 no. Social Houses at St. Evins Park Monasterevin Co. Kildare.

Client:
Annette Aspell, Director of Housing

Prepared By: Capital Housing Team,
Architectural Services Section,
Housing Department,
Kildare County Council
A/Senior Architect: Paddy Henderson, MRIAI
Exec. Architect: Aleksandra Dutczak, MRIAI
Exec. Technician: David Boyle.

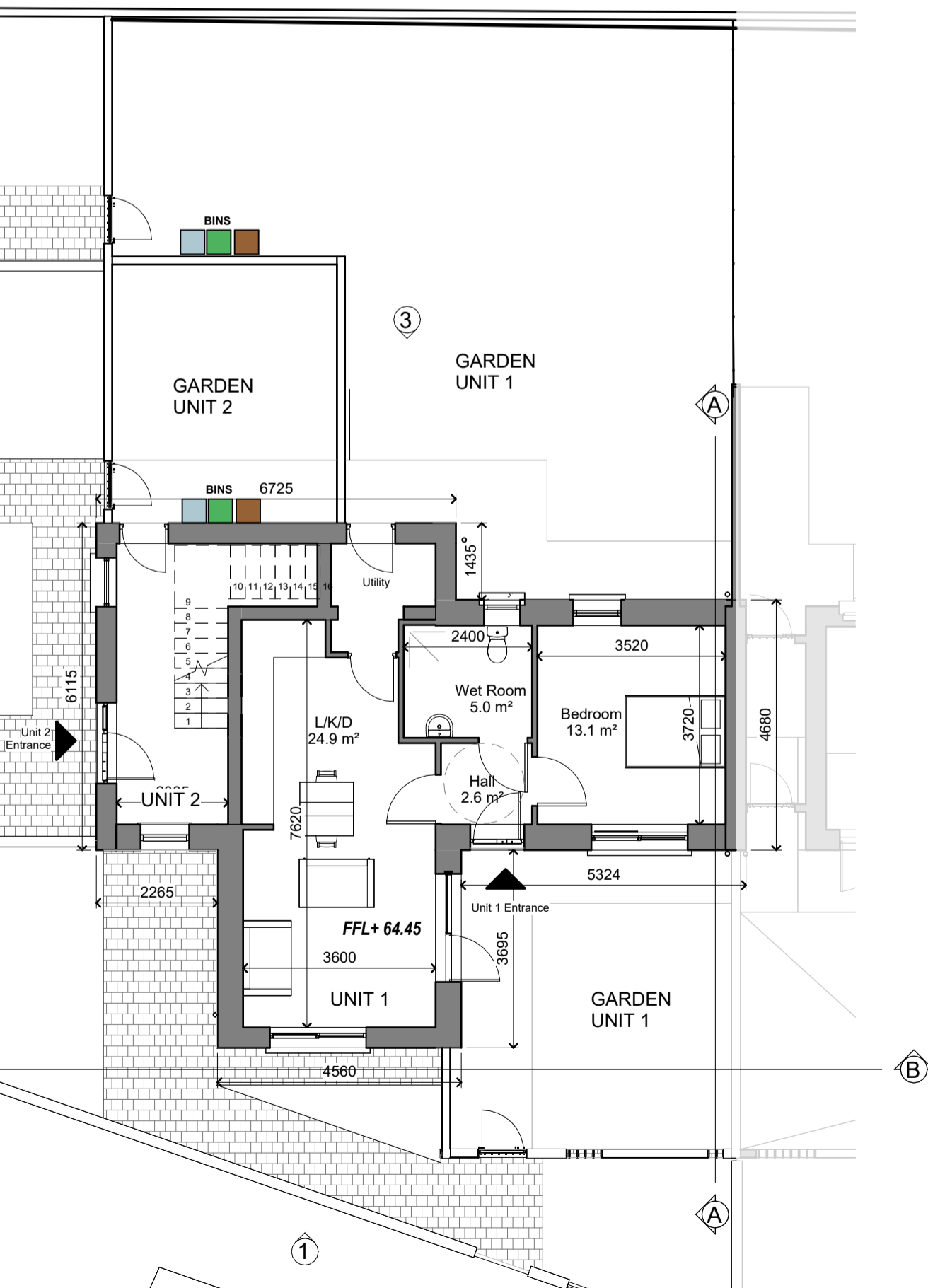
Dwg :
UNIT TYPE A&B 1 & 2
Scale As indicated@A1

Project No:
19-049
Dwg No:
P8-07

Drawn By: PJH
Checked By: DB
Date: 04/04/2024 14:31:10



UNIT TYPE A&B UNITS 1&2



GROUND FLOOR UNITS 1&2
1 : 100

Unit Type C1 - 2 BED - 4 PERSON

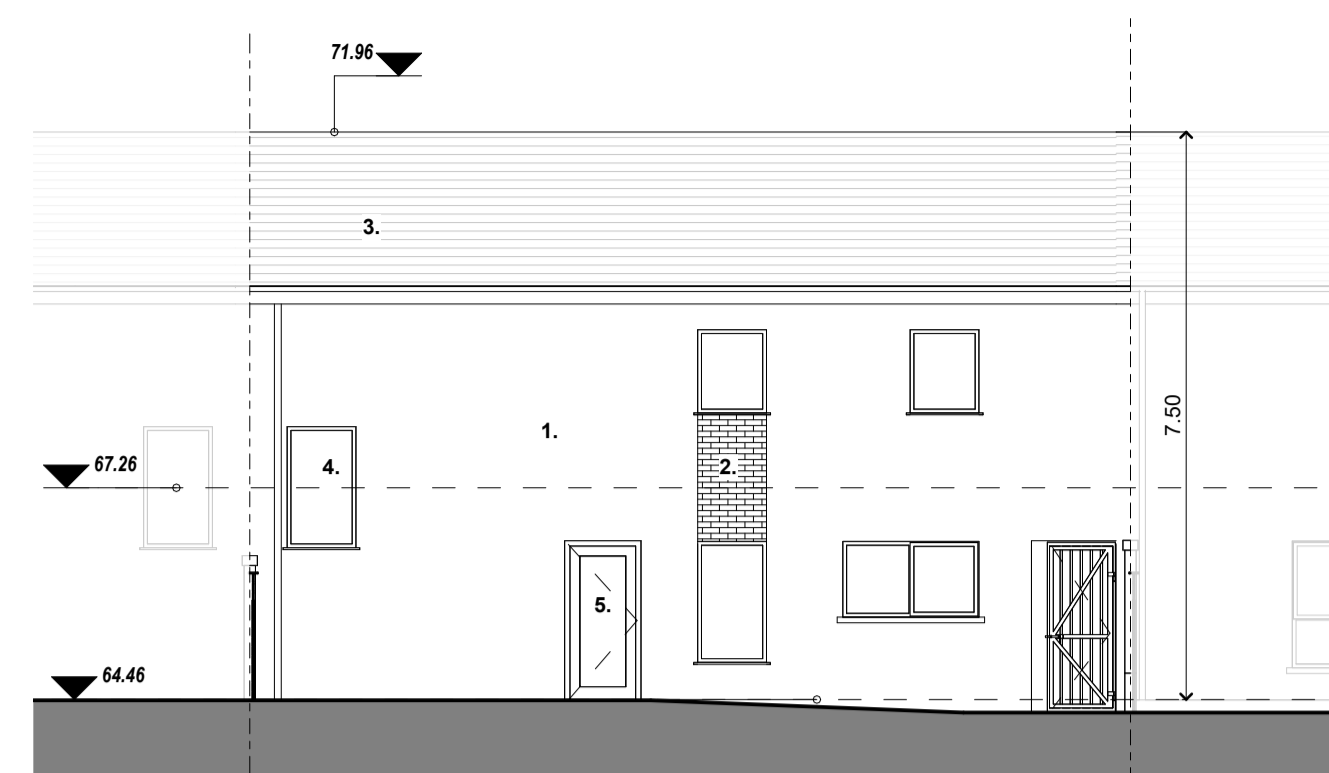
	Msq
LIVING	30.5
BEROOM	14.1 + 11.5 = 25.6
STORAGE	7.7
OPEN SPACE	122
FLOOR AREA	91



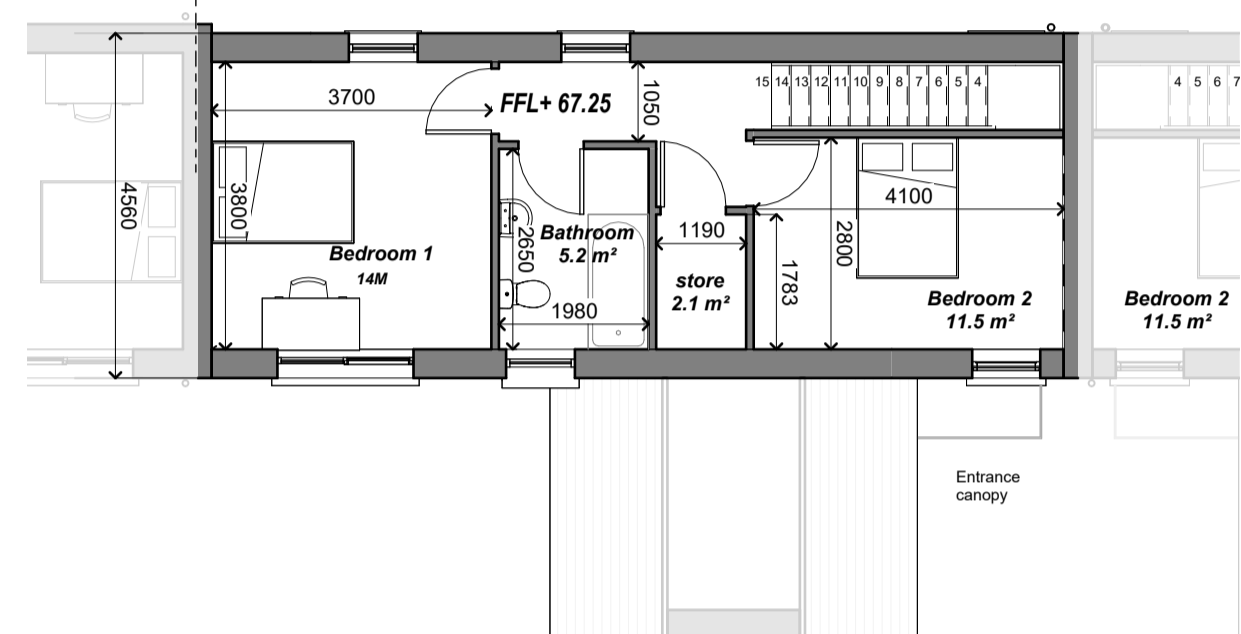
1 ELEVATION 1 UNIT TYPE C1
1 : 100



C SECTION CC UNIT TYPE C1
1 : 100



2 ELEVATION 2 UNIT TYPE C1
1 : 100



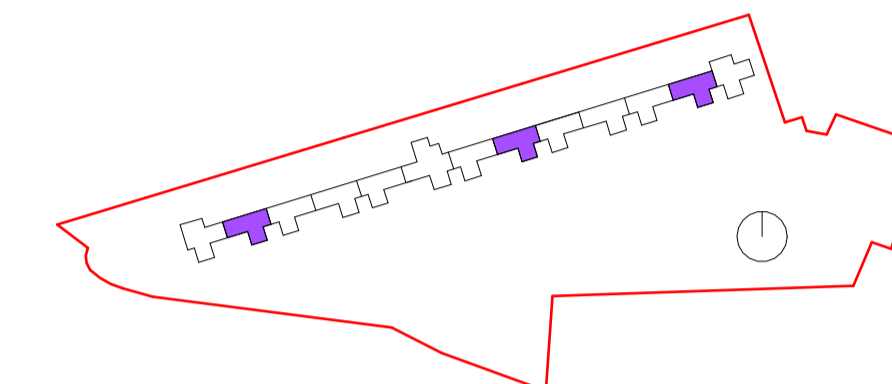
FIRST FLOOR UNIT TYPE C1
1 : 100



A SECTION AA UNIT TYPE C1
1 : 100



B SECTION BB- UNIT TYPE C1
1 : 100



EXTERNAL WALLS - selections tbc

1. Acrylic render finish.
2. Facing brick.

ROOF - selections tbc

3. Tiled pitched roof. Aluminium accessories

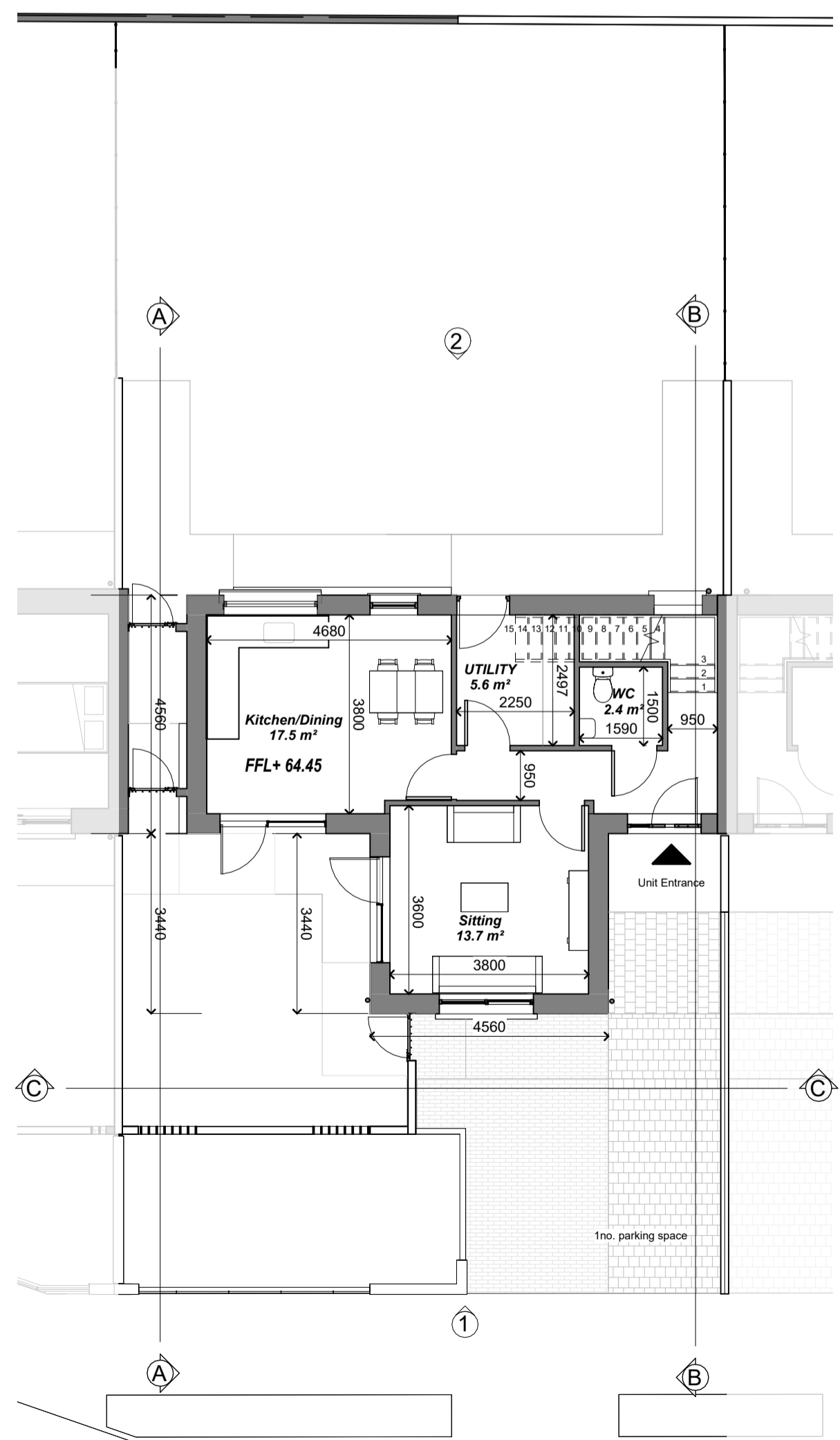
EXTERNAL WINDOWS/DOORS - selections tbc

4. Triple glazed aluminium/timber frame windows. No opening sections in rear windows to mitigate noise.
5. Timber/composite doors. canopy over front entrance doors

GARDEN WALLS - selections tbc

6. Masonry render finish wall and capping.
7. Masonry wall and capping with metal railing inset as elevations. Exposed facing brick base, render finish above.
8. Street boundary metal railing.
9. Brick wall with concrete capping.
10. Galvanised steel framed gate with timber/recycled plastic timber effect cladding.

Refer to General Arrangement plans and elevations for locations and extents. All finishes to be in line with Employer's Requirements for Detail Design of Quality Housing (2019).



GROUND FLOOR UNIT TYPE C1
1 : 100



UNIT TYPE C1 UNITS 4,6,10&12

PART 8

- Notes:**
- This drawing has been prepared for PART 8 only
 - All drawings to be read in conjunction with all other consultant drawings. Architect to be informed immediately of any discrepancies
 - Figured dimensions only to be taken from this drawing. All dimensions and levels to be checked on site. Architect to be informed immediately of any discrepancies

REVISION		
REV	NOTES	DATE

Kildare County Council,
Architectural Services Section,
Devoy Park,
Naas,
Co. Kildare

Project:
Proposed 15 no. Social Houses at St. Evins Park
Monasterevin Co. Kildare.

Client:
Annette Aspell, Director of Housing

Prepared By: Capital Housing Team,
Architectural Services Section,
Housing Department,
Kildare County Council

A/Senior Architect: Paddy Henderson, MRAI
Exec. Architect: Aleksandra Dutczak, MRAI
Exec. Technician: David Boyle.

Dwg :
UNIT TYPE C1 3,9 & 13
Scale As indicated@A1

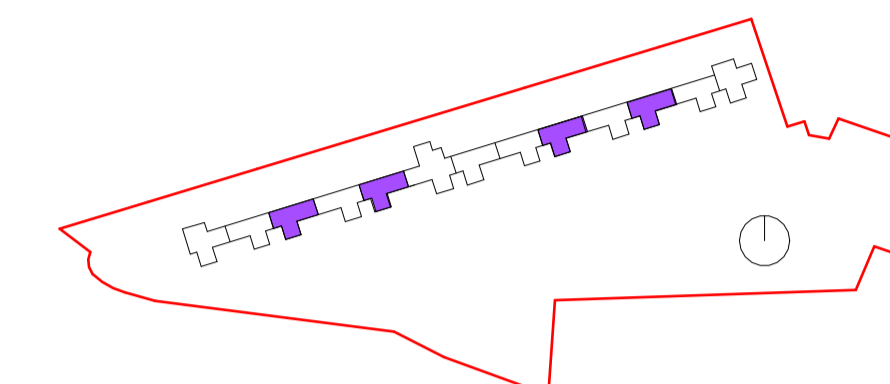
Project No:
19-049
Dwg No:
P8-08

Drawn By Author Checked By Checker Date 04/04/2024 14:31:14

Unit Type C2 - 2 BED - 4 PERSON

	Msq
LIVING	30.5
BEDROOM	14.1 + 11.5 = 25.6
STORAGE	7.7
OPEN SPACE	122
FLOOR AREA	92

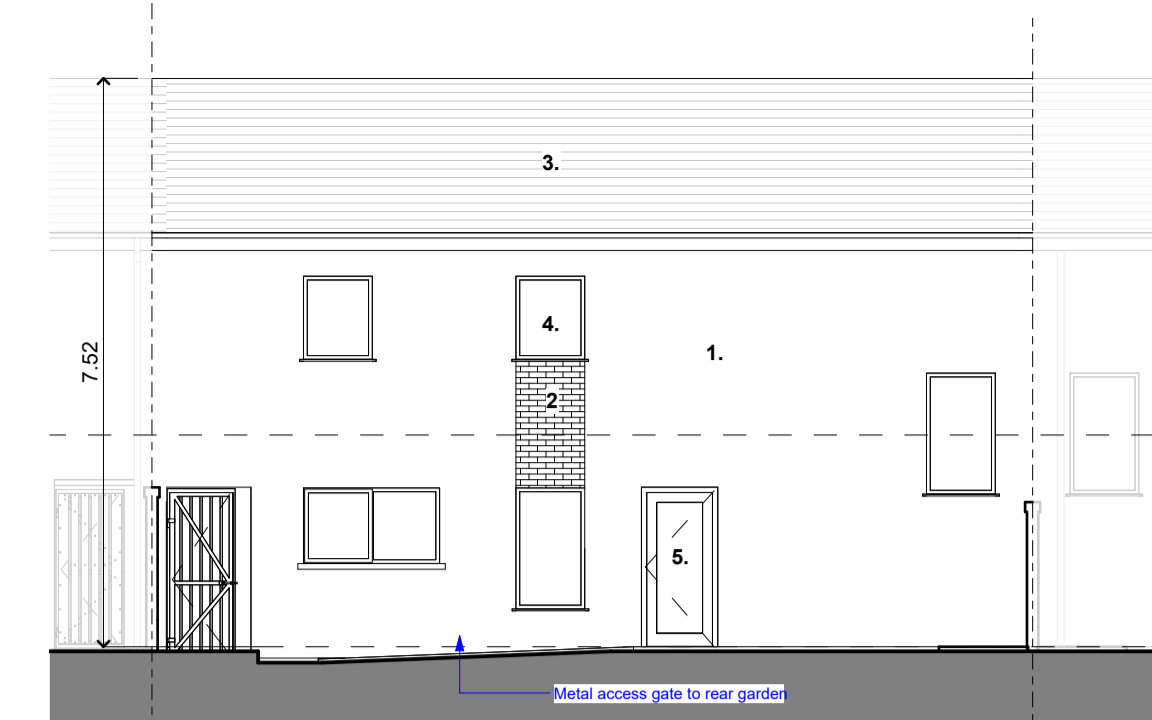
Gross Internal Area 91m²



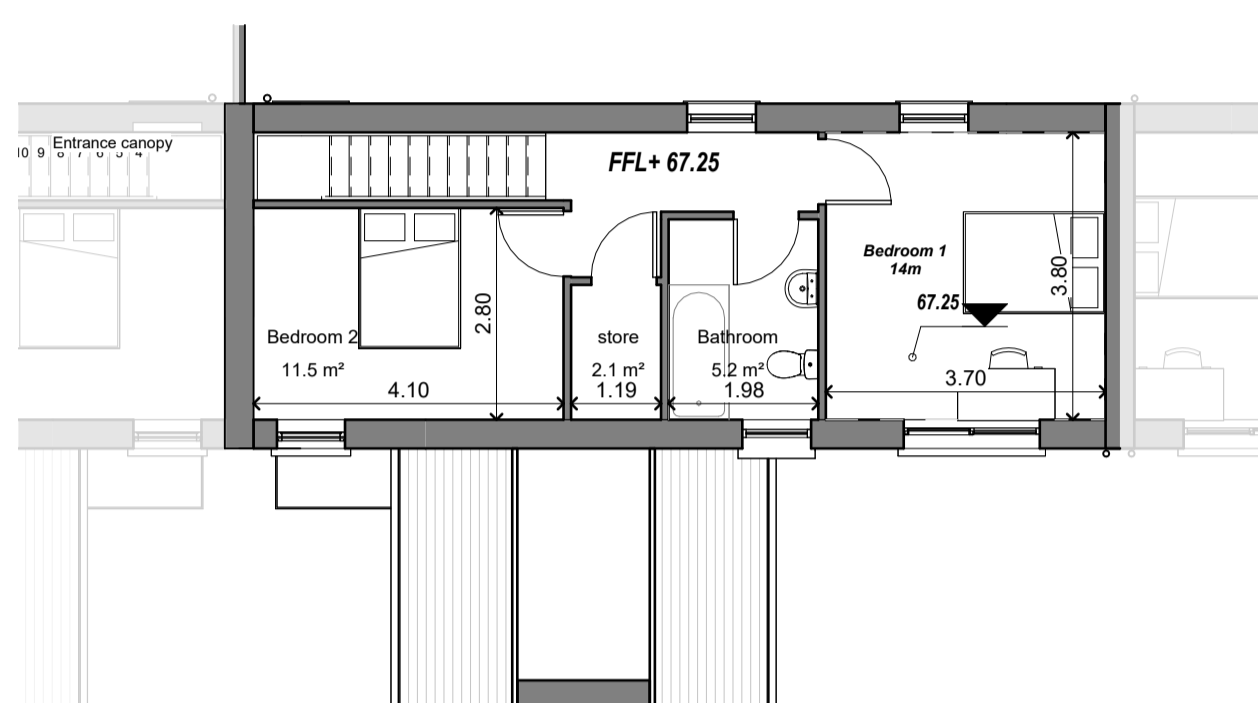
1 FRONT ELEVATION -UNIT TYPE C2
1 : 100



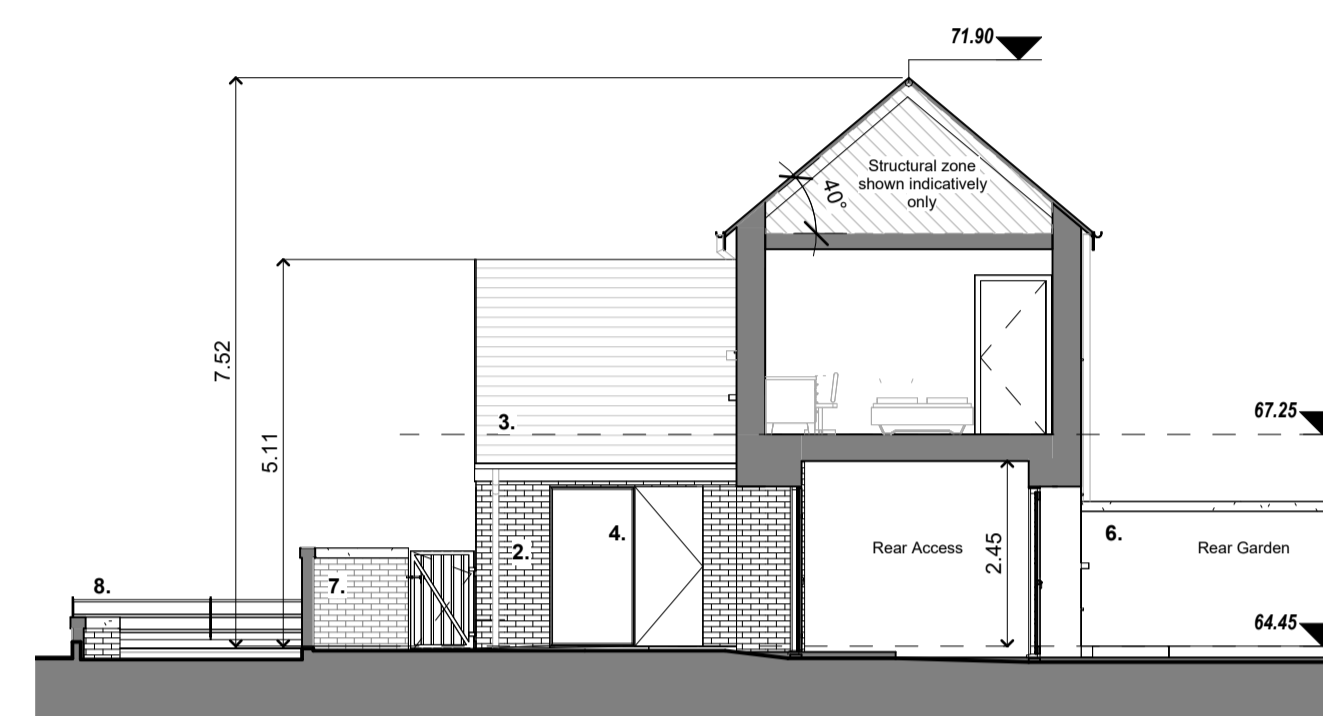
C SECTION BB UNIT TYPE C2
1 : 100



2 REAR ELEVATION UNIT TYPE C2
1 : 100



FIRST FLOOR UNIT TYPE C2
1 : 100



B SECTION DD UNIT TYPE C2
1 : 100



A SECTION CC UNIT TYPE C2
1 : 100

EXTERNAL WALLS - selections tbc

1. Acrylic render finish.

2. Facing brick.

ROOF - selections tbc

3. Tiled pitched roof. Aluminium accessories

EXTERNAL WINDOWS/DOORS - selections tbc

4. Triple glazed aluminium/timber frame windows. No opening sections in rear windows to mitigate noise.

5. Timber/composite doors. canopy over front entrance doors

GARDEN WALLS - selections tbc

6. Masonry render finish wall and capping.

7. Masonry wall and capping with metal railing inset as elevations. Exposed facing brick base, render finish above.

8. Street boundary metal railing.

9. Brick wall with concrete capping.

10. Galvanised steel framed gate with timber/recycled plastic timber effect cladding.

Refer to General Arrangement plans and elevations for locations and extents. All finishes to be in line with Employer's Requirements for Detail Design of Quality Housing (2019).

KEY Site Services

— Foul water drainage main connection and final inspection chamber (FIC)

— Surface water drainage main connection and inspection chamber (SIC)

NOTE: Site wide services as per Engineer's design and specification. Shown indicatively only. Please refer to Engineer's latest information for exact locations and types.

PART 8

- Notes:**
- This drawing has been prepared for PART 8 only
 - All drawings to be read in conjunction with all other consultant drawings. Architect to be informed immediately of any discrepancies
 - Figured dimensions only to be taken from this drawing. All dimensions and levels to be checked on site. Architect to be informed immediately of any discrepancies

REVISION

REV	NOTES	DATE
P2	Draft issue to acoustician	19/07/23
P3	Draft issued for information	21/07/23
P4	STAGE 2 issue	08/11/23
P5	STAGE 2 revised	20/12/23

Kildare County Council,
Architectural Services Section,
Devoy Park,
Naas,
Co. Kildare

Project:
Proposed 15 no. Social Houses at St. Evins Park
Monasterevin Co. Kildare.

Client:
Annette Aspell, Director of Housing

Prepared By: Capital Housing Team,
Architectural Services Section,
Housing Department,
Kildare County Council
A/Senior Architect: Paddy Henderson, MRAI
Exec. Architect: Aleksandra Dutczak, MRAI
Exec. Technician: David Boyle.

Dwg :
UNIT TYPE C2 4,6,10 & 12
Scale As indicated@A1

Project No:
19-049
Dwg No:
P8-09

Drawn By: PJH
Checked By: DB
Date: 04/04/2024 14:31:16



UNIT TYPE C2 UNITS 4,6,10 & 12

GROUND FLOOR UNIT TYPE C2
1 : 100

Unit Type D1 - 3 BED - 5 PERSON

	Msq
LIVING	34
BEROOM	13.1 + 11.5 + 9.0 = 36.1
STORAGE	10.0
OPEN SPACE	122
FLOOR AREA	102



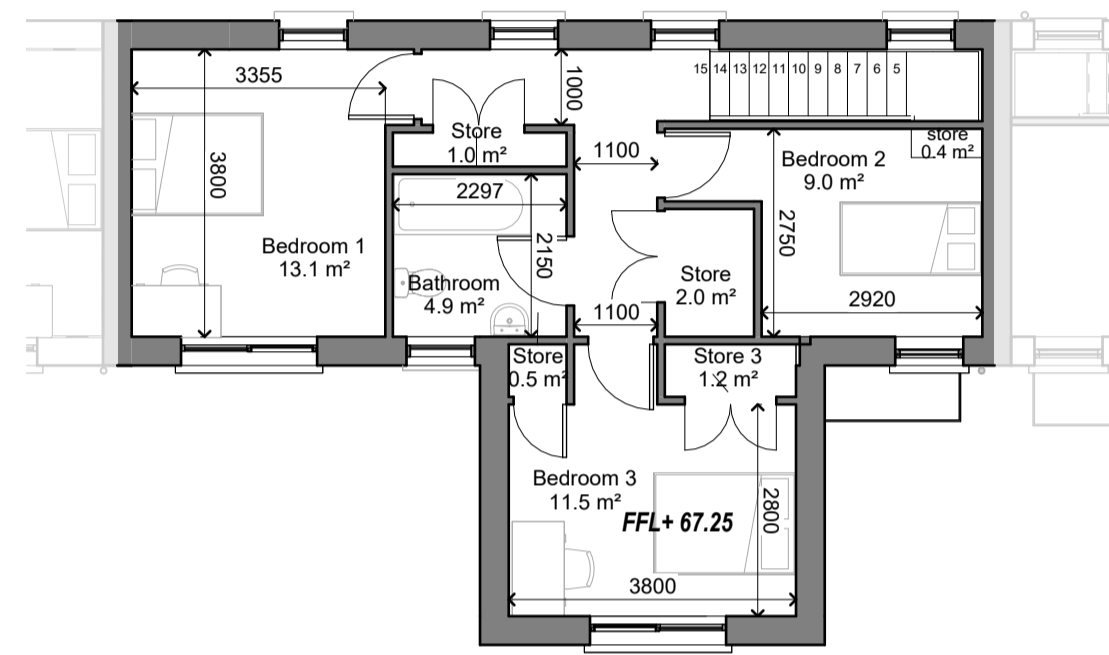
1 ELEVATION 1 UNIT TYPE D1
1 : 100



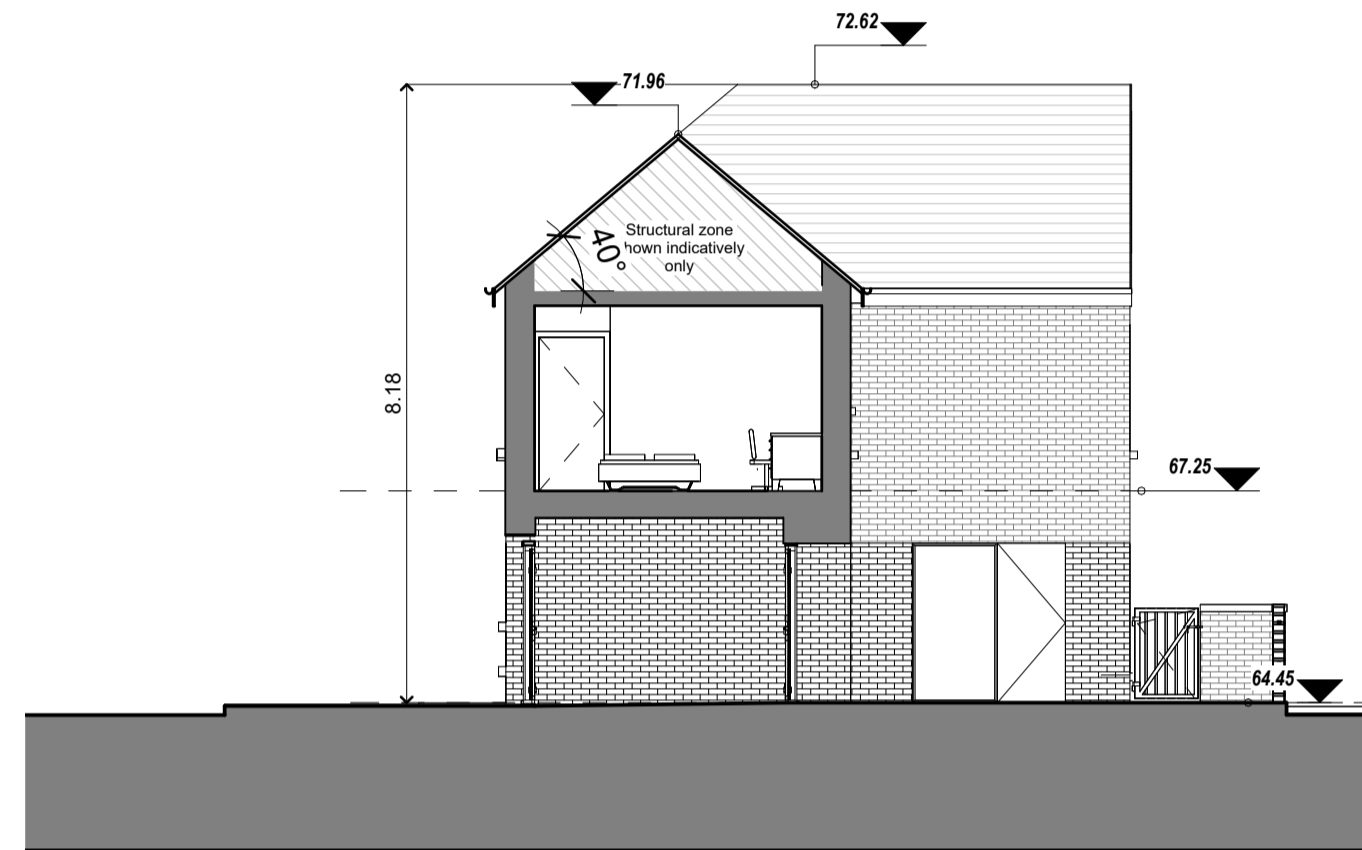
C SECTION CC - UNIT TYPE D1
1 : 100



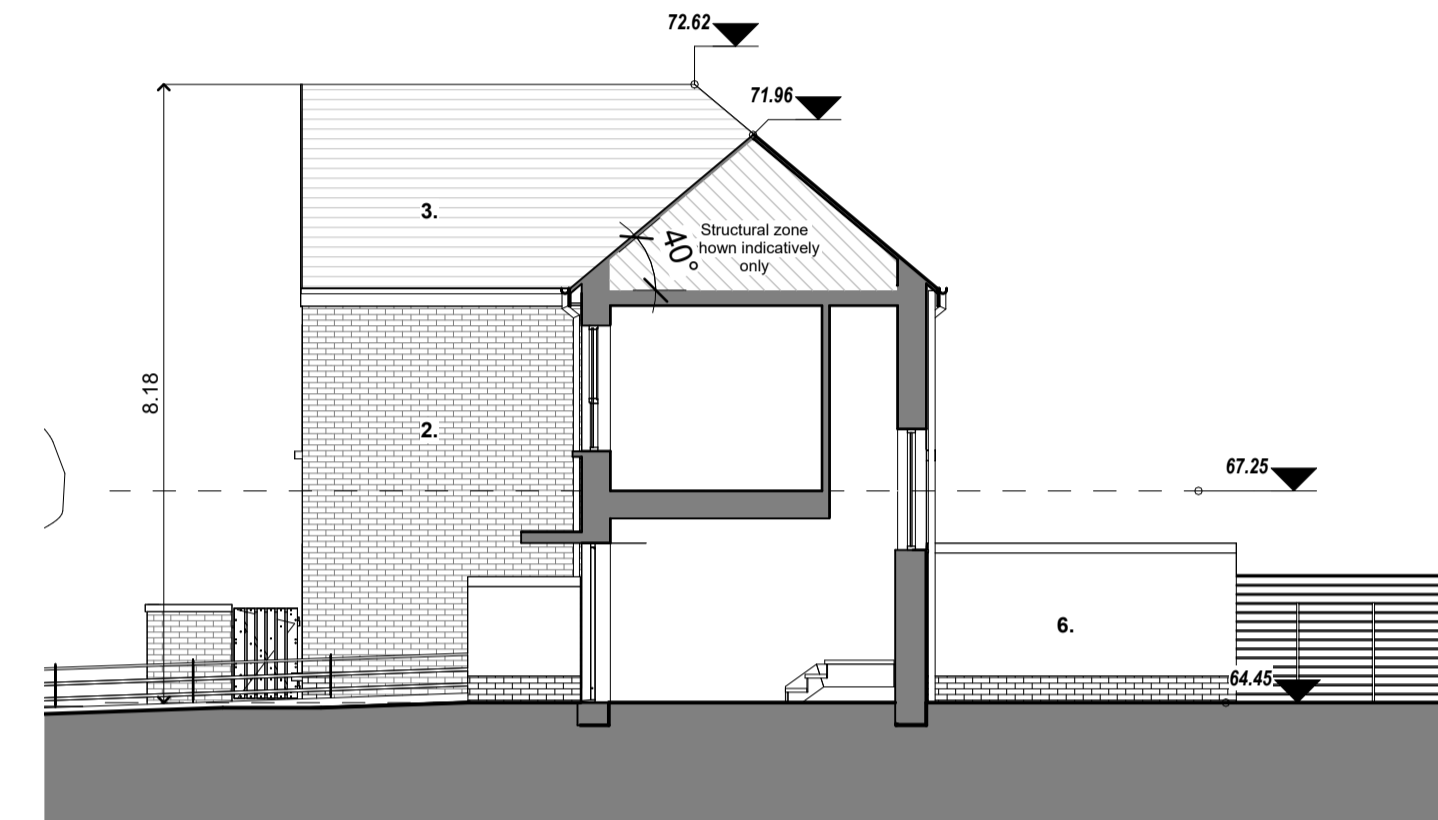
2 ELEVATION 2 UNIT TYPE D1
1 : 100



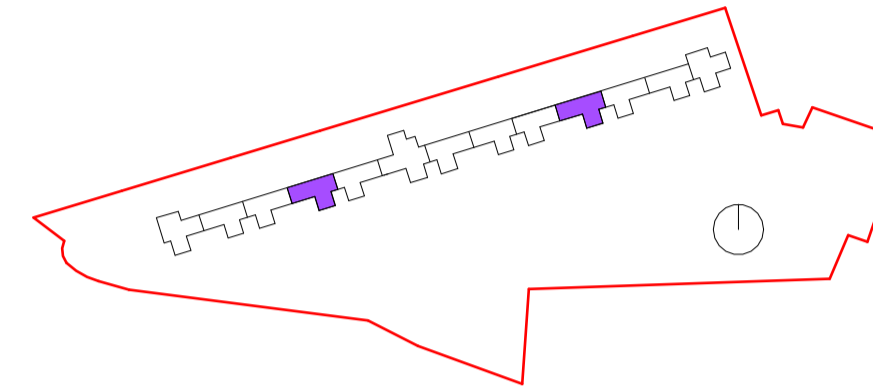
FIRST FLOOR UNIT TYPE D1
1 : 100



A SECTION AA-UNIT TYPE D1
1 : 100



B SECTION BB- UNIT TYPE D1
1 : 100



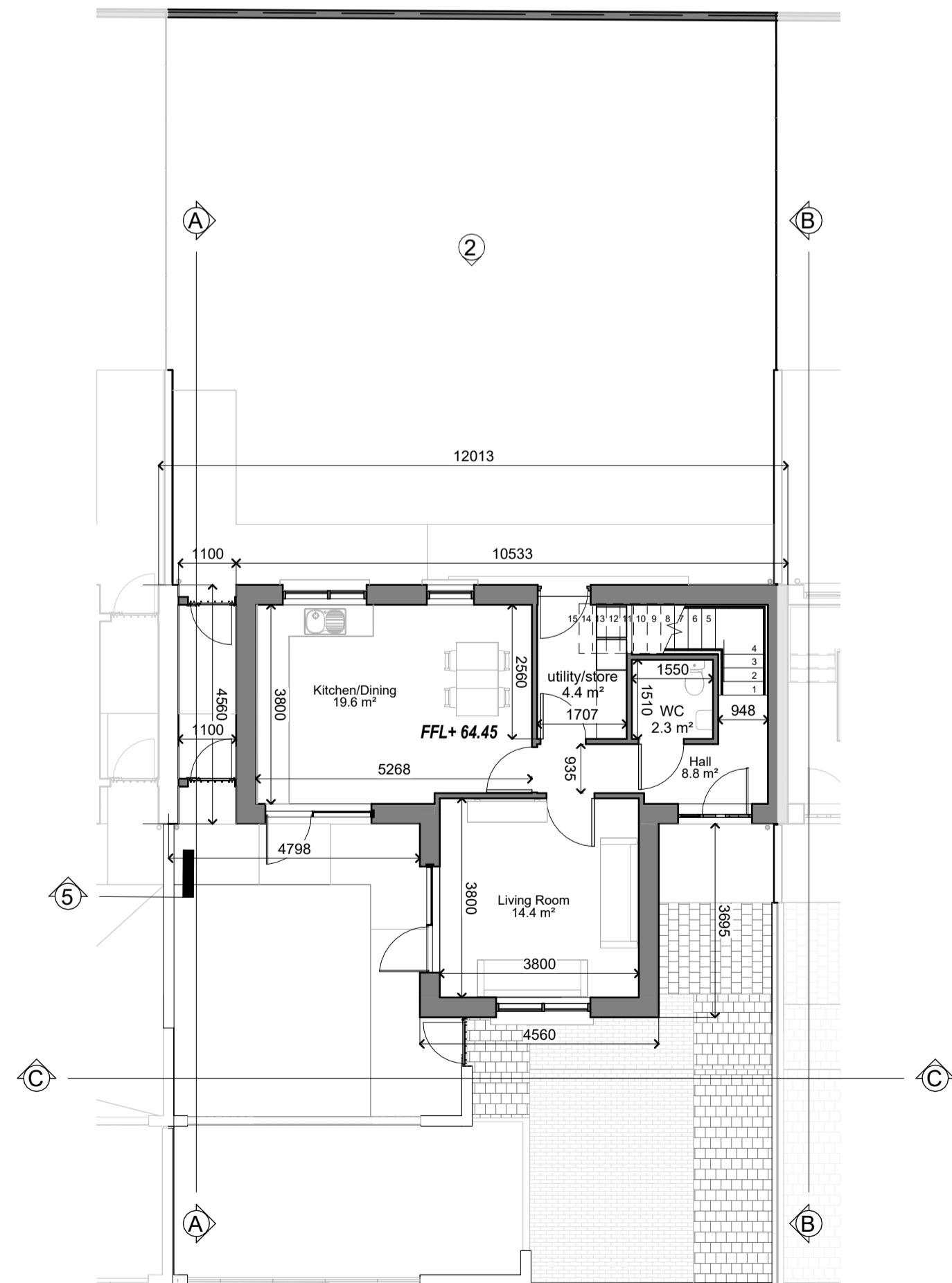
EXTERNAL WALLS - selections tbc
1. Acrylic render finish.
2. Facing brick.

ROOF - selections tbc
3. Tiled pitched roof. Aluminium accessories

EXTERNAL WINDOWS/DOORS - selections tbc
4. Triple glazed aluminium/timber frame windows. No opening sections in rear windows to mitigate noise.
5. Timber/composite doors. canopy over front entrance doors

GARDEN WALLS - selections tbc
6. Masonry render finish wall and capping.
7. Masonry wall and capping with metal railing inset as elevations. Exposed facing brick base, render finish above.
8. Street boundary metal railing.
9. Brick wall with concrete capping.
10. Galvanised steel framed gate with timber/recycled plastic timber effect cladding.

Refer to General Arrangement plans and elevations for locations and extents. All finishes to be in line with Employer's Requirements for Detail Design of Quality Housing (2019).

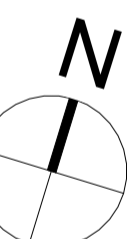


GROUND FLOOR UNIT TYPE D1
1 : 100



UNIT TYPE C2 UNITS 5&11

PART 8



- Notes:**
- This drawing has been prepared for PART 8 only
 - All drawings to be read in conjunction with all other consultant drawings. Architect to be informed immediately of any discrepancies
 - Figured dimensions only to be taken from this drawing. All dimensions and levels to be checked on site. Architect to be informed immediately of any discrepancies

REV	NOTES	DATE

Kildare County Council,
Architectural Services Section,
Devoy Park,
Naas,
Co. Kildare



Project:
Proposed 15 no. Social Houses at St. Evins Park
Monasterevin Co. Kildare.

Client:
Annette Aspell, Director of Housing

Prepared By: Capital Housing Team,
Architectural Services Section,
Housing Department,
Kildare County Council

A/Senior Architect: Paddy Henderson, MRAI
Exec. Architect: Aleksandra Dutczak, MRAI
Exec. Technician: David Boyle.

Dwg :
UNIT TYPE D1 5 & 11
Scale As indicated@A1

Project No:
19-049
Dwg No:
P8-10

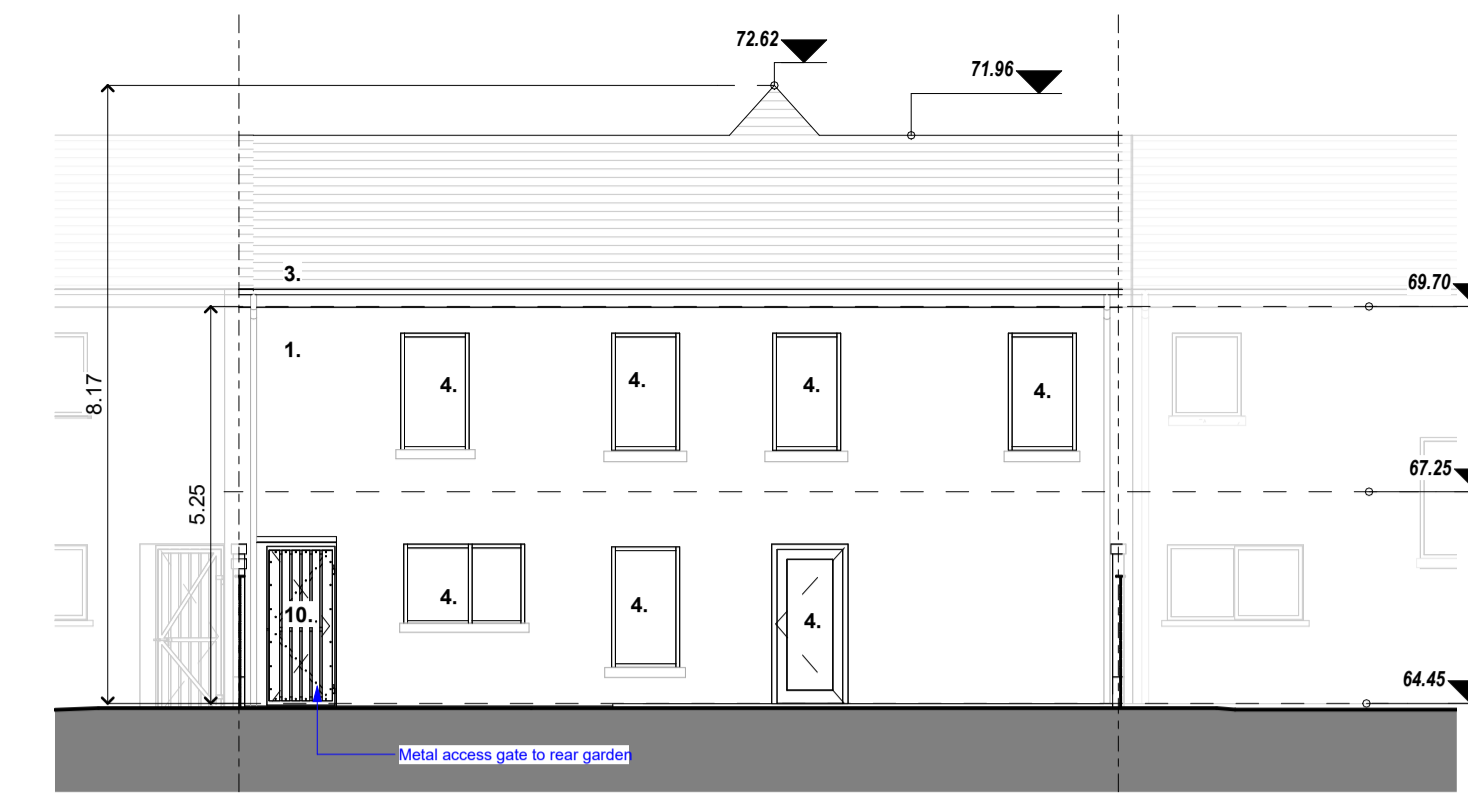
Drawn By Checked By Date
Author Checker 04/04/2024 14:31:19



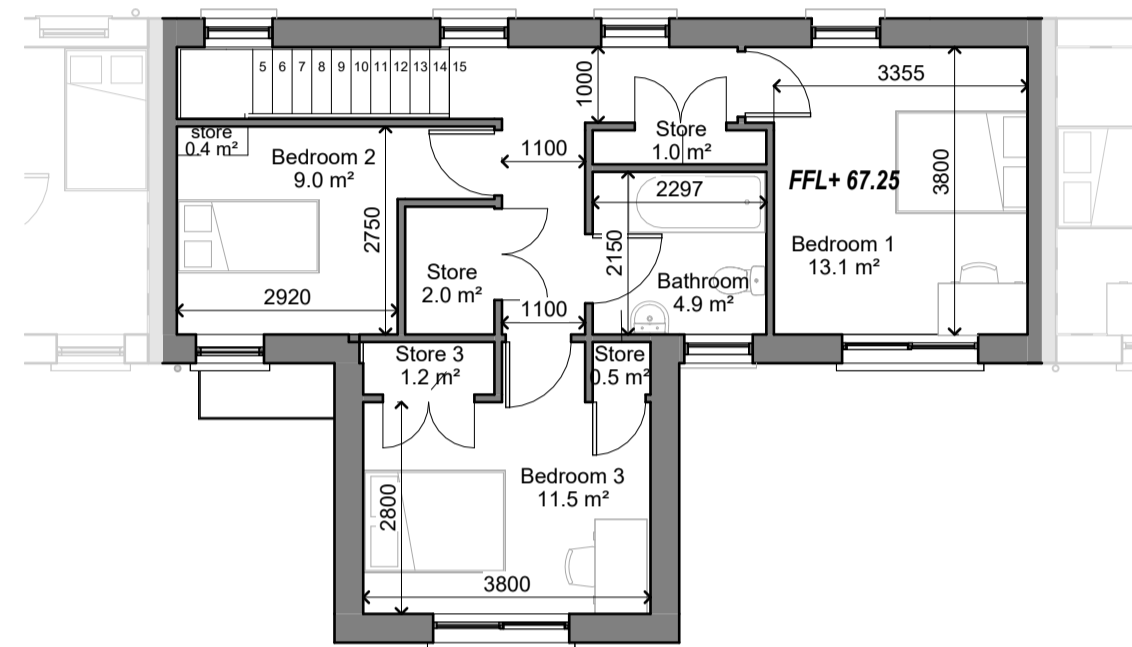
1 FRONT ELEVATION - UNIT TYPE D2
1 : 100



SECTION CC UNIT TYPE D2
1 : 100



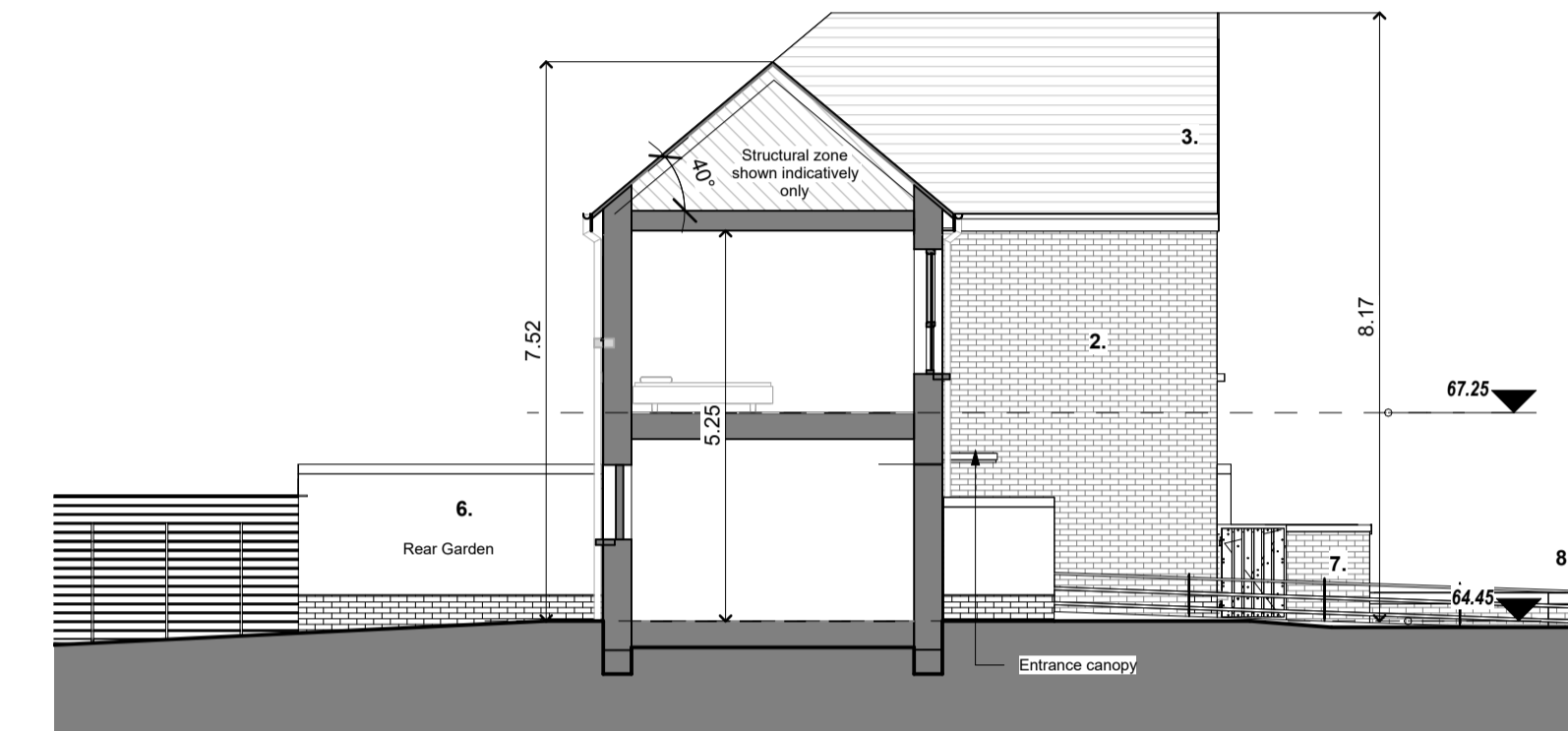
2 REAR ELEVATION - UNIT TYPE D2
1 : 100



FIRST FLOOR UNIT TYPE D2
1 : 100



SECTION BB - UNIT TYPE D2
1 : 100

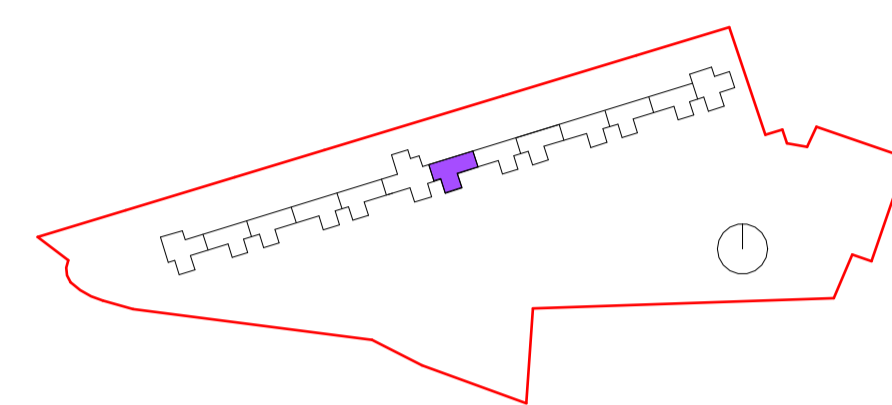


SECTION AA - UNIT TYPE D2
1 : 100

Unit Type D2 - 3 BED - 5 PERSON

	Msq
LIVING	34
BEROOM	13.1 + 11.5 + 9.0 = 36.1
STORAGE	10.0
OPEN SPACE	122
FLOOR AREA	102

Gross Internal Area 108.9m²



- EXTERNAL WALLS - selections tbc**
 1. Acrylic render finish.
 2. Facing brick.
- ROOF - selections tbc**
 3. Tiled pitched roof. Aluminium accessories
- EXTERNAL WINDOWS/DOORS - selections tbc**
 4. Triple glazed aluminium/timber frame windows. No opening sections in rear windows to mitigate noise.
 5. Timber/composite doors. canopy over front entrance doors
- GARDEN WALLS - selections tbc**
 6. Masonry render finish wall and capping.
 7. Masonry wall and capping with metal railing inset as elevations. Exposed facing brick base, render finish above.
 8. Street boundary metal railing.
 9. Brick wall with concrete capping.
 10. Galvanised steel framed gate with timber/recycled plastic timber effect cladding.

Refer to General Arrangement plans and elevations for locations and extents. All finishes to be in line with Employer's Requirements for Detail Design of Quality Housing (2019).

- KEY Site Services**
- Foul water drainage main connection and final inspection chamber (FIC)
 - Surface water drainage main connection and inspection chamber (SIC)

NOTE:
 Site wide services as per Engineer's design and specification. Shown indicatively only. Please refer to Engineer's latest information for exact locations and types.

PART 8

- Notes:**
- This drawing has been prepared for PART 8 only
 - All drawings to be read in conjunction with all other consultant drawings. Architect to be informed immediately of any discrepancies
 - Figured dimensions only to be taken from this drawing. All dimensions and levels to be checked on site. Architect to be informed immediately of any discrepancies

REV	NOTES	DATE
P2	Draft issue to acoustician	19/07/23
P3	Draft issued for information	21/07/23
P4	STAGE 2 issue	08/11/23
P5	STAGE 2 revised	20/12/23

Kildare County Council,
 Architectural Services Section,
 Devoy Park,
 Naas,
 Co. Kildare

Project:
 Proposed 15 no. Social Houses at St. Evins Park
 Monasterevin Co. Kildare.

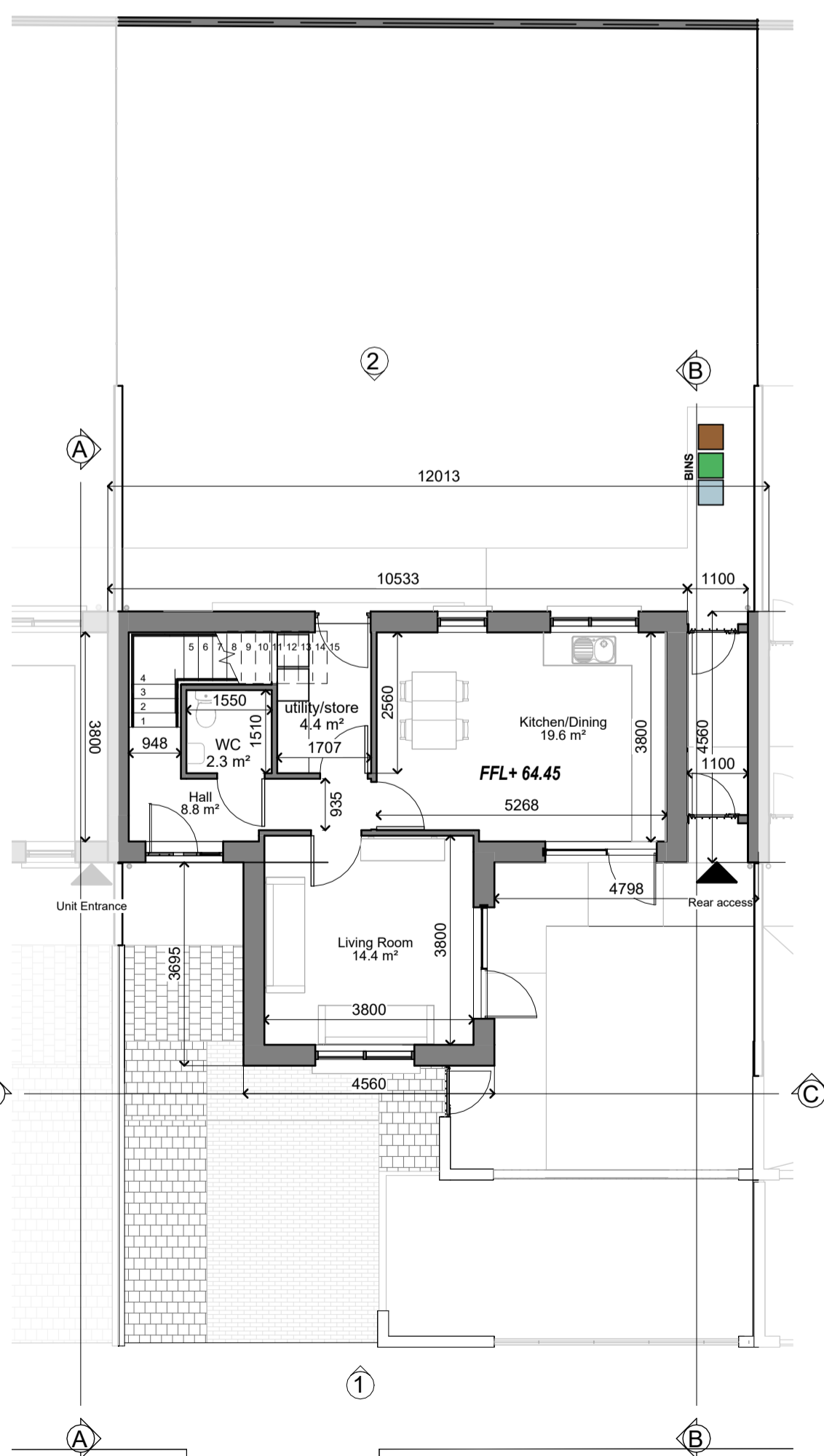
Client:
 Annette Aspell, Director of Housing

Prepared By: Capital Housing Team,
 Architectural Services Section,
 Housing Department,
 Kildare County Council

A/Senior Architect: Paddy Henderson, MRAI
Exec. Architect: Aleksandra Dutczak, MRAI
Exec. Technician: David Boyle.

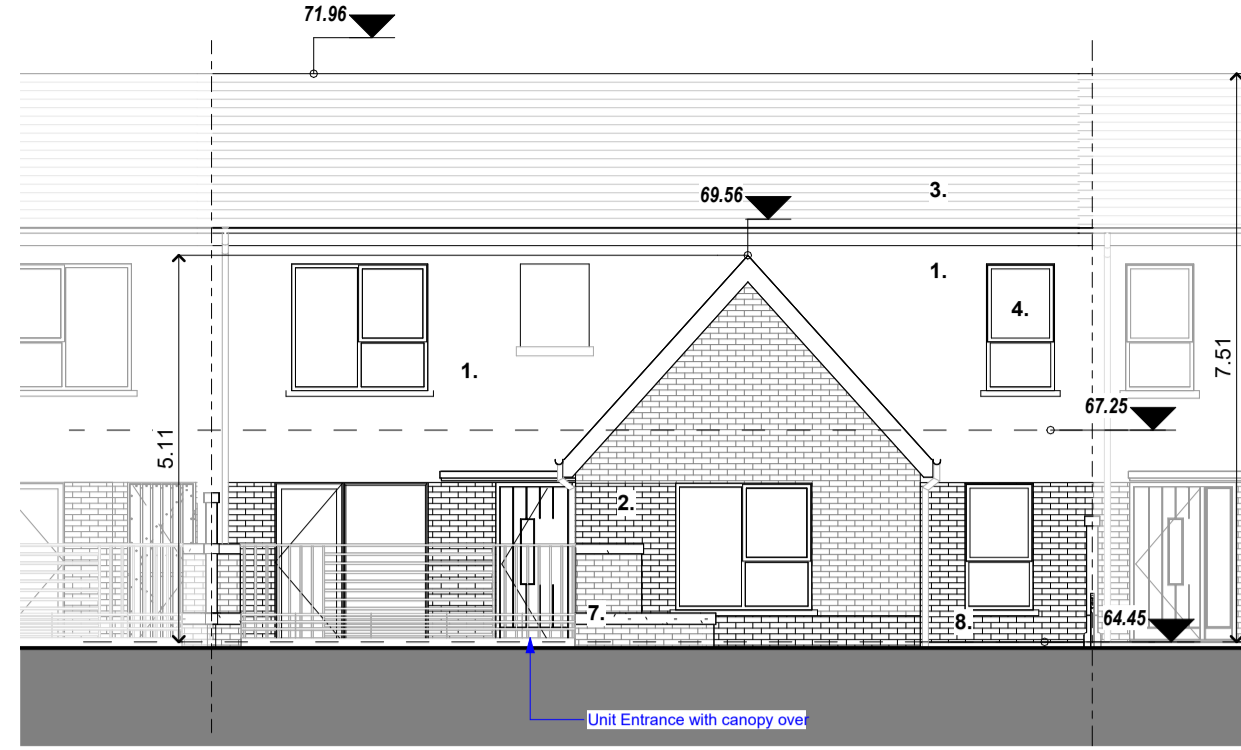


UNIT TYPE C2 UNIT 8



GROUND FLOOR UNIT TYPE D2
1 : 100

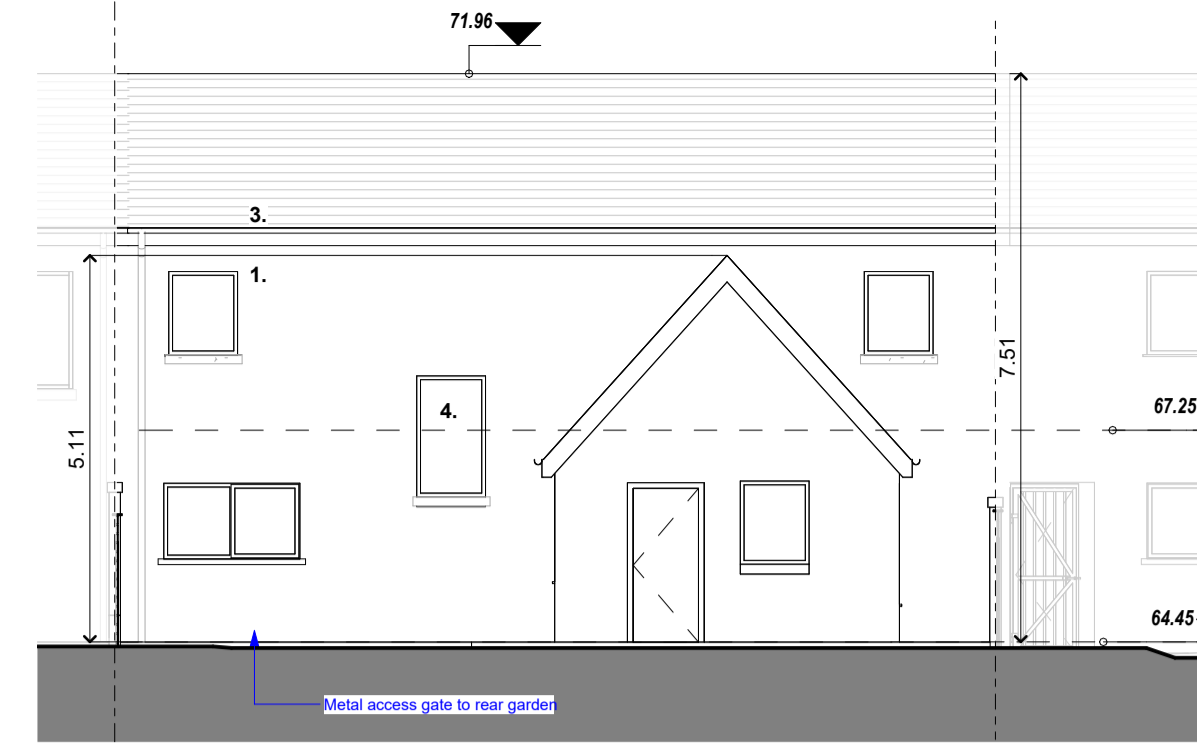
Dwg :	UNIT TYPE D2 8	Project No:	19-049
Scale :	As indicated@A1	Dwg No:	P8-11
Drawn By :	PJH	Checked By :	DB
		Date :	04/04/2024 14:31:23



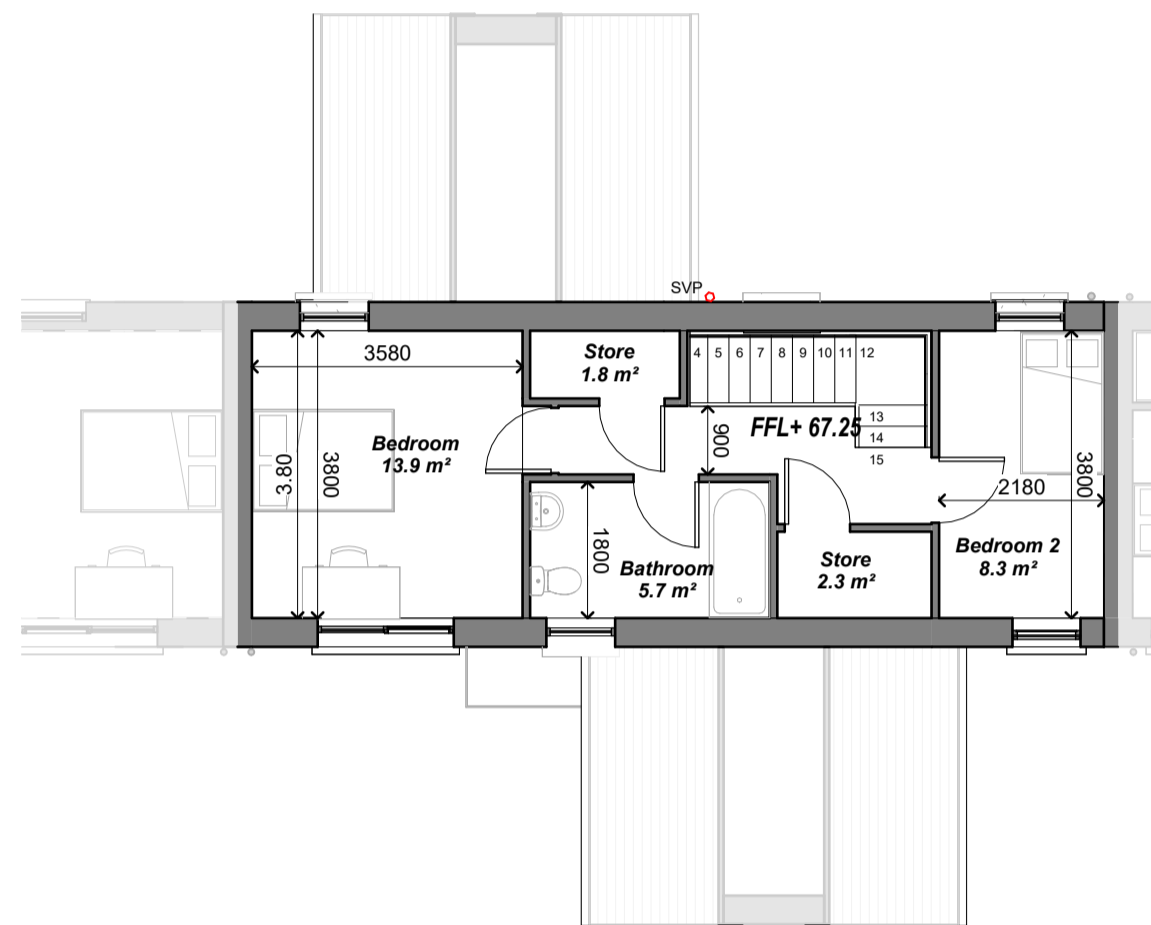
1 FRONT ELEVATION - UNIT TYPE E
1 : 100



C SECTION CC- UNIT TYPE E
1 : 100



2 REAR ELEVATION - UNIT TYPE E
1 : 100



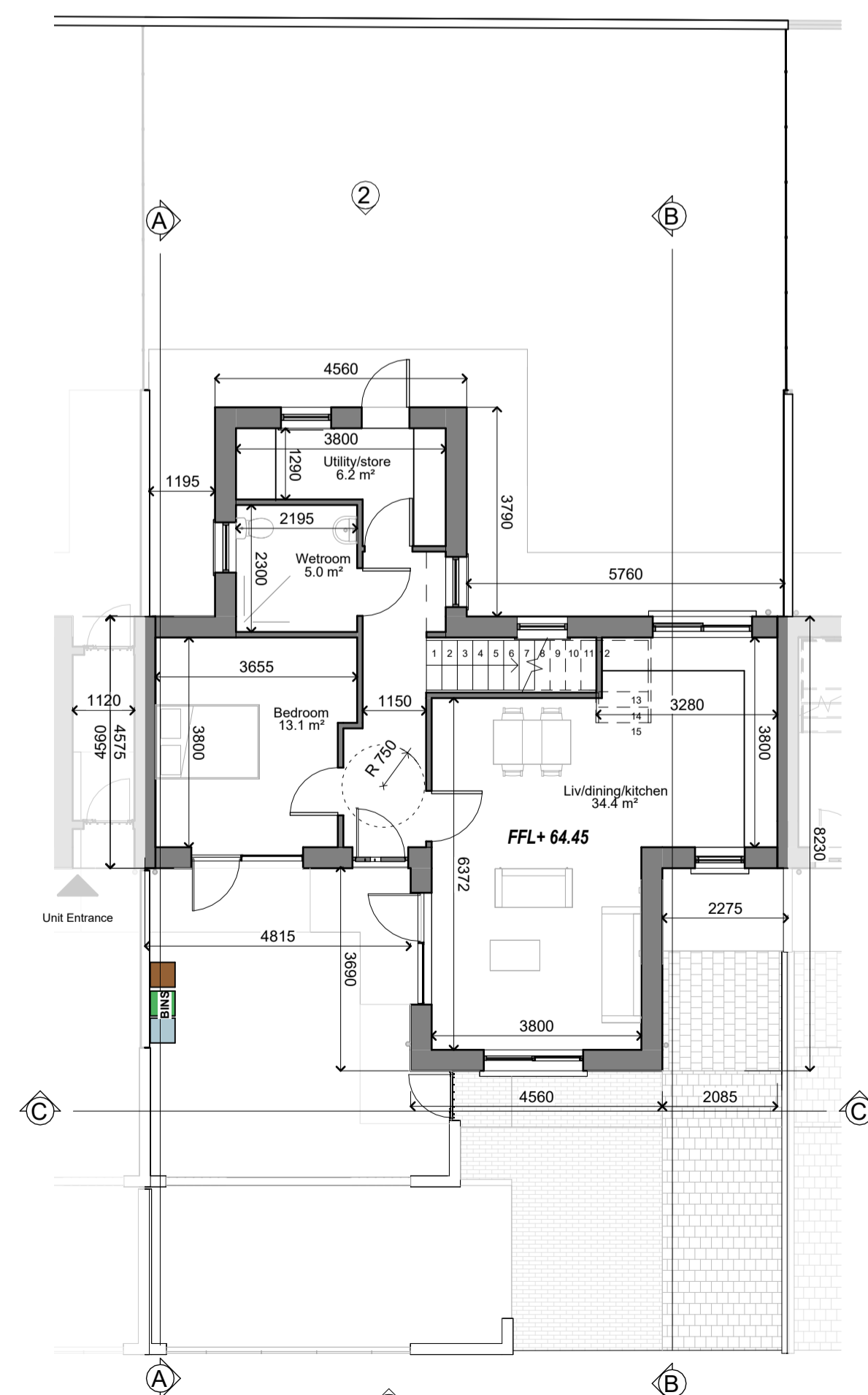
FIRST FLOOR UNIT TYPE E
1 : 100



B SECTION BB UNIT TYPE E
1 : 100



A SECTION AA UNIT TYPE E
1 : 100



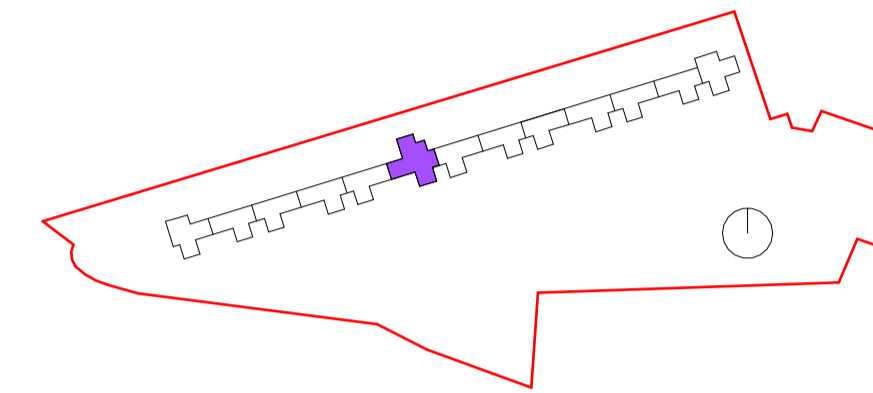
GROUND FLOOR UNIT TYPE E
1 : 100



UNIT TYPE E UNIT 7

Unit Type E - 3 BED - 5 PERSON
SPECIFIC ACCESSIBLE UNIT

	Msq
LIVING	34.4
BEDROOM	13.1 + 13.6 + 8.3 = 36.3
STORAGE	9.3
OPEN SPACE	113
FLOOR AREA	112.5



EXTERNAL WALLS - selections tbc
1. Acrylic render finish.
2. Facing brick.

ROOF - selections tbc
3. Tiled pitched roof. Aluminium accessories

EXTERNAL WINDOWS/DOORS - selections tbc
4. Triple glazed aluminium/timber frame windows. No opening sections in rear windows to mitigate noise.
5. Timber/composite doors. canopy over front entrance doors

GARDEN WALLS - selections tbc
6. Masonry render finish wall and capping.
7. Masonry wall and capping with metal railing inset as elevations. Exposed facing brick base, render finish above.
8. Street boundary metal railing.
9. Brick wall with concrete capping.
10. Galvanised steel framed gate with timber/recycled plastic timber effect cladding.

Refer to General Arrangement plans and elevations for locations and extents. All finishes to be in line with Employer's Requirements for Detail Design of Quality Housing (2019).

KEY Site Services

- Foul water drainage main connection and final inspection chamber (FIC)
- Surface water drainage main connection and inspection chamber (SIC)

NOTE:
Site wide services as per Engineer's design and specification. Shown indicatively only. Please refer to Engineer's latest information for exact locations and types.

PART 8

- Notes:
- This drawing has been prepared for PART 8 only
 - All drawings to be read in conjunction with all other consultant drawings. Architect to be informed immediately of any discrepancies
 - Figured dimensions only to be taken from this drawing. All dimensions and levels to be checked on site. Architect to be informed immediately of any discrepancies

REVISION

REV	NOTES	DATE
P2	Draft issue to acoustician	19/07/23
P3	Draft issued for information	21/07/23
P4	STAGE 2 Issue	08/11/23

Kildare County Council,
Architectural Services Section,
Devoy Park,
Naas,
Co. Kildare

Project:
Proposed 15 no. Social Houses at St. Evins Park
Monasterevin Co. Kildare.

Client:
Annette Aspell, Director of Housing

Prepared By: Capital Housing Team,
Architectural Services Section,
Housing Department,
Kildare County Council
A/Senior Architect: Paddy Henderson, MRAI
Exec. Architect: Aleksandra Dutczak, MRAI
Exec. Technician: David Boyle.

Dwg :
UNIT TYPE E 7
Scale As indicated@A1

Project No:
19-049
Dwg No:
P8-12

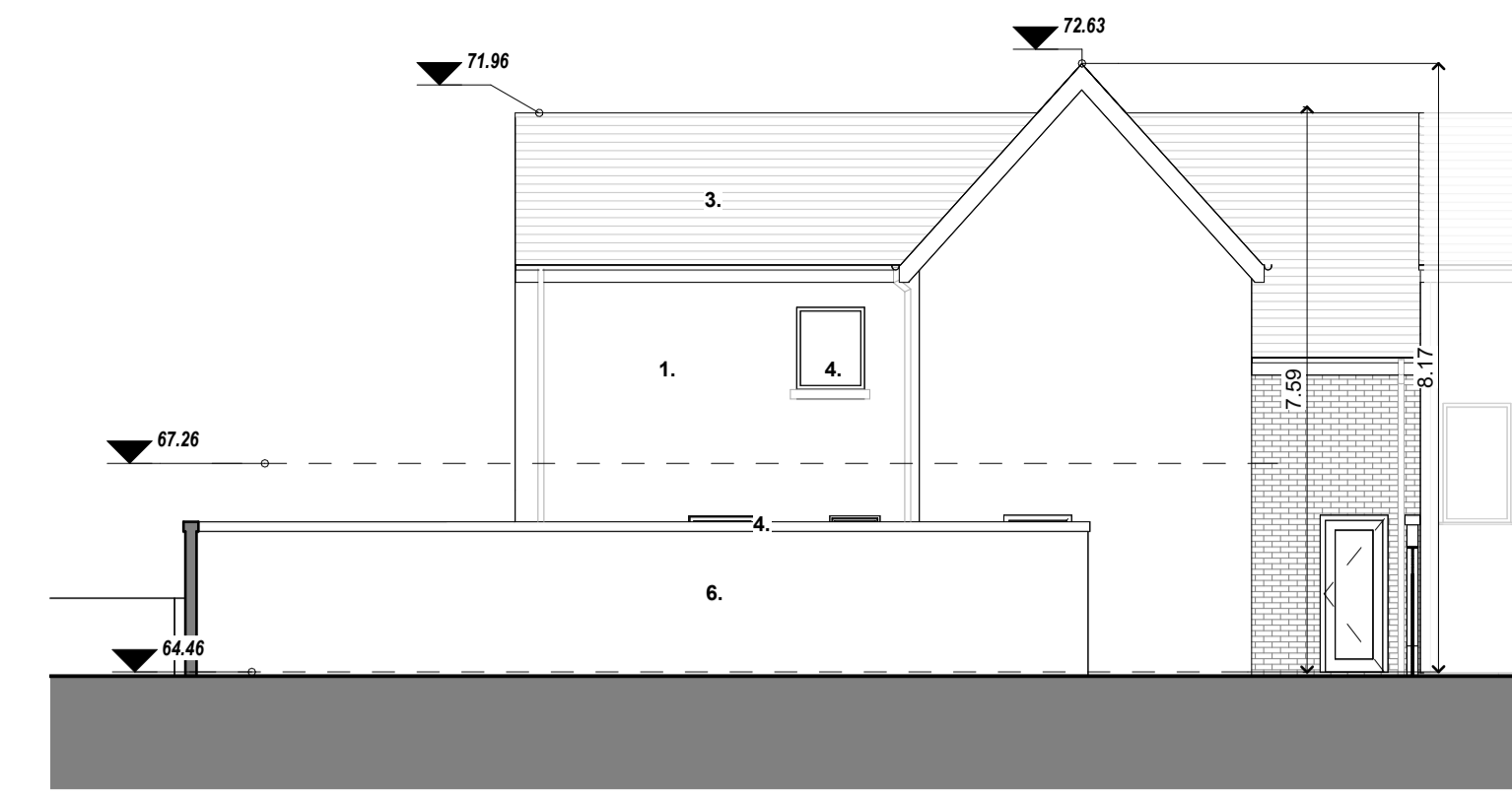
Drawn By: PJH
Checked By: DB
Date: 04/04/2024 14:31:26



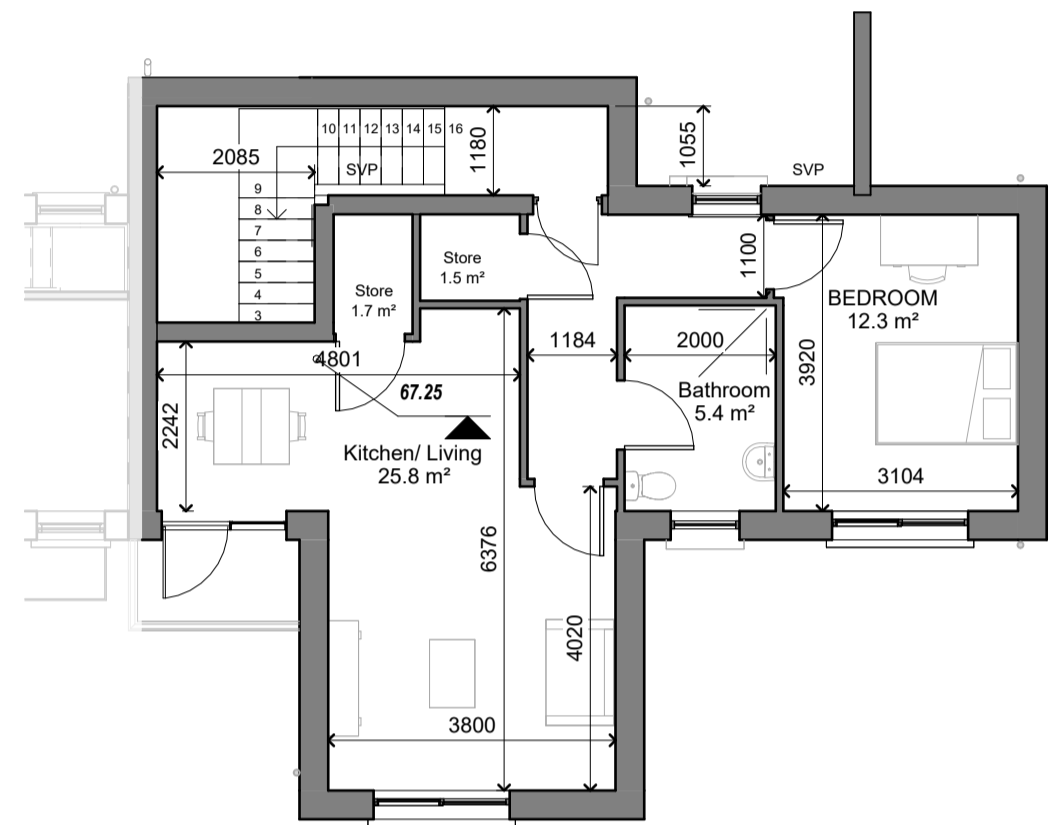
5 FRONT ELEVATION - UNIT F&G
1 : 100



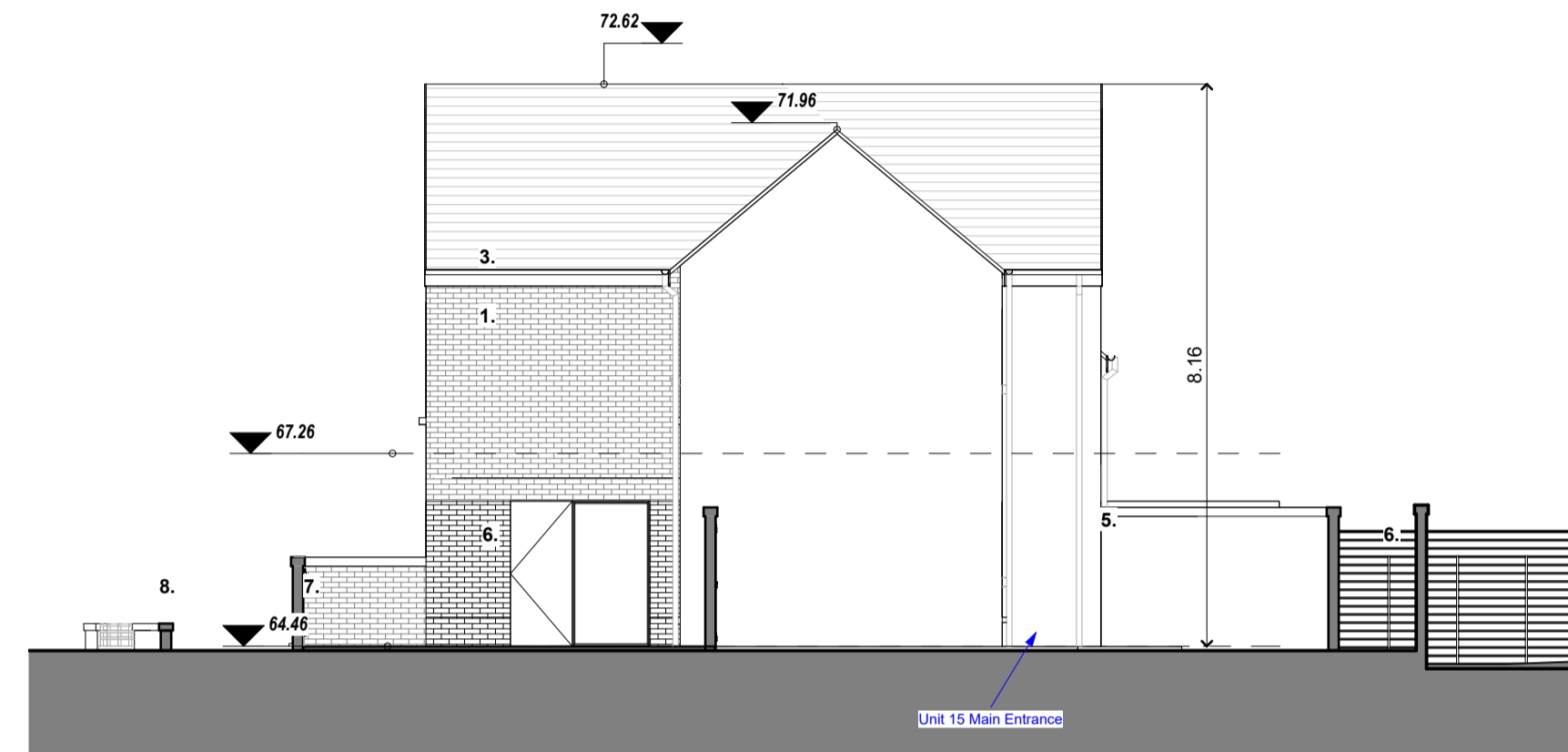
1 SECTION BB UNIT TYPE F&G
1 : 100



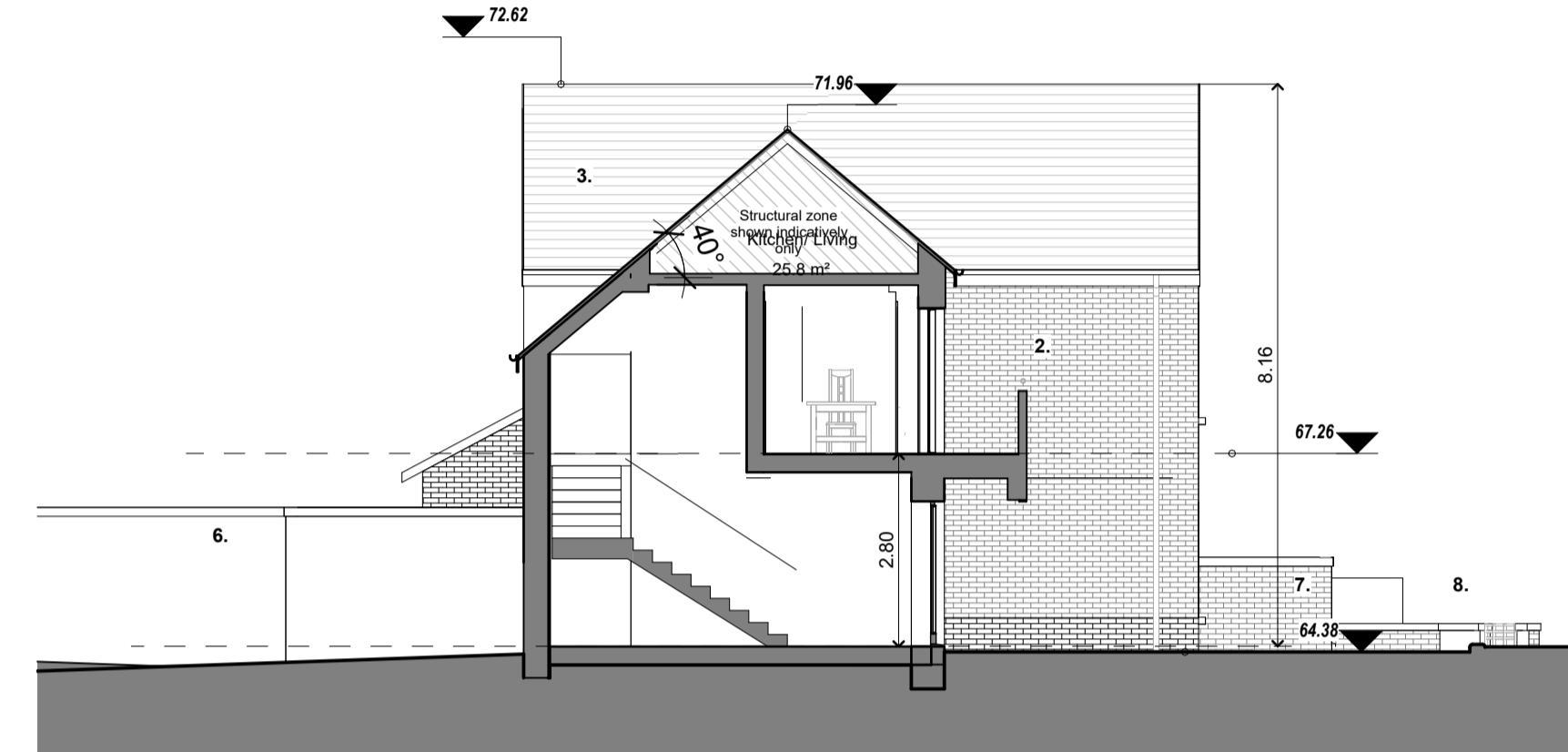
2 REAR ELEVATION - UNIT TYPE F&G
1 : 100



FIRST FLOOR UNIT TYPE F&G
1 : 100



B SECTION BB - UNIT F&G
1 : 100



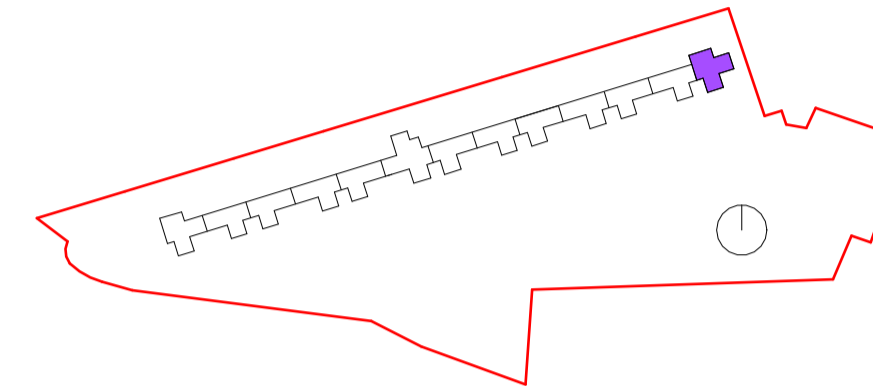
A SECTION AA - UNIT F&G
1 : 100

Unit Type F - 1 BED - 2 PERSON

	Msq
LIVING	24.8
BEDROOM	13.1
STORAGE	3.5
OPEN SPACE	126
FLOOR AREA	50

Unit Type G - 1 BED - 2 PERSON

	Msq
LIVING	25.8
BEDROOM	12.3
STORAGE	3.1
OPEN SPACE	63
FLOOR AREA	54.5



EXTERNAL WALLS - selections tbc
 1. Acrylic render finish.
 2. Facing brick.

ROOF - selections tbc
 3. Tiled pitched roof. Aluminium accessories

EXTERNAL WINDOWS/DOORS - selections tbc
 4. Triple glazed aluminium/timber frame windows. No opening sections in rear windows to mitigate noise.
 5. Timber/composite doors. canopy over front entrance doors

GARDEN WALLS - selections tbc
 6. Masonry render finish wall and capping.
 7. Masonry wall and capping with metal railing inset as elevations. Exposed facing brick base, render finish above.
 8. Street boundary metal railing.
 9. Brick wall with concrete capping.
 10. Galvanised steel framed gate with timber/recycled plastic timber effect cladding.

Refer to General Arrangement plans and elevations for locations and extents. All finishes to be in line with Employer's Requirements for Detail Design of Quality Housing (2019).

KEY Site Services

- Foul water drainage main connection and final inspection chamber (FIC)
- Surface water drainage main connection and inspection chamber (SIC)

NOTE:
 Site wide services as per Engineer's design and specification. Shown indicatively only. Please refer to Engineer's latest information for exact locations and types.

PART 8

- Notes:**
- This drawing has been prepared for PART 8 only
 - All drawings to be read in conjunction with all other consultant drawings. Architect to be informed immediately of any discrepancies
 - Figured dimensions only to be taken from this drawing. All dimensions and levels to be checked on site. Architect to be informed immediately of any discrepancies

REVISION

REV	NOTES	DATE
P2	Draft issue to acoustician	19/07/23
P3	Draft issued for information	21/07/23
P4	STAGE 2 Issue	08/11/23

Kildare County Council,
 Architectural Services Section,
 Devoy Park,
 Naas,
 Co. Kildare



Project:
 Proposed 15 no. Social Houses at St. Evins Park Monasterevin Co. Kildare.

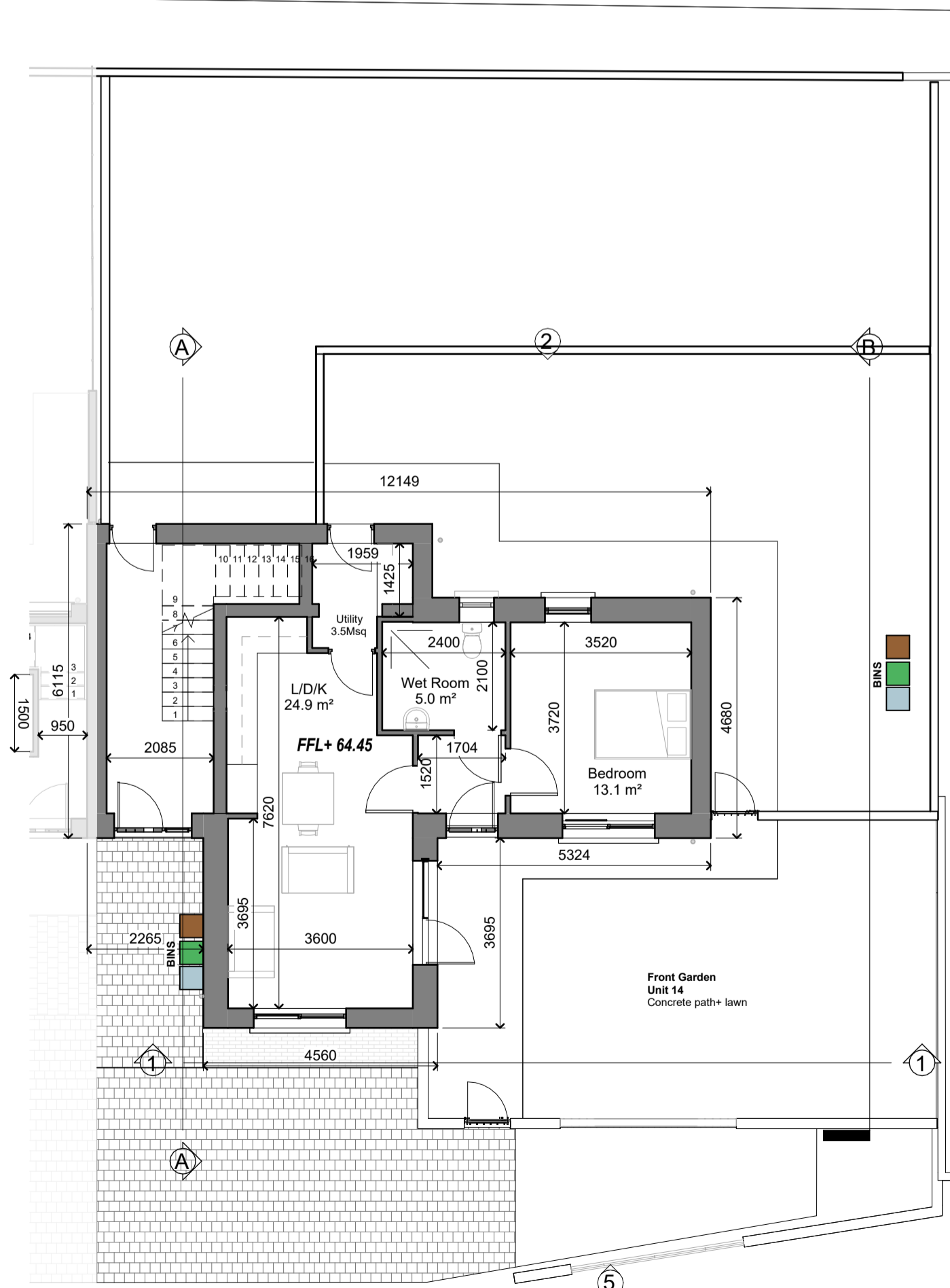
Client:
 Annette Aspell, Director of Housing

Prepared By: Capital Housing Team,
 Architectural Services Section,
 Housing Department,
 Kildare County Council
A/Senior Architect: Paddy Henderson, MRIAI
Exec. Architect: Aleksandra Dutczak, MRIAI
Exec. Technician: David Boyle.

Dwg :
UNIT TYPE F&G 14&15
 Scale As indicated@A1

Project No:
19-049
 Dwg No:
P8-13

Drawn By PH Checked By DB Date 04/04/2024 14:31:29



GROUND FLOOR UNIT TYPE F&G
1 : 100



UNIT TYPE F&G UNITS 14&15