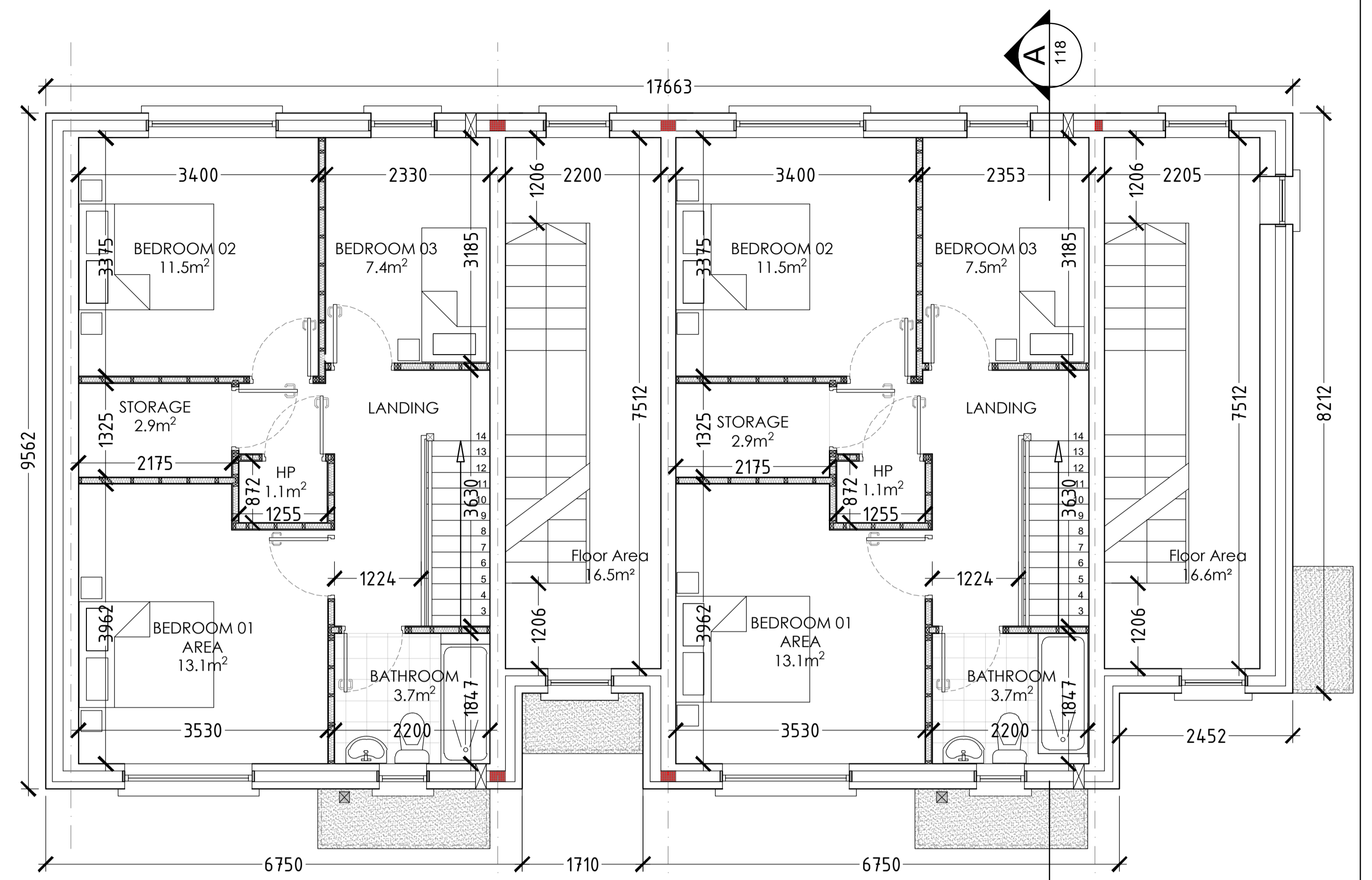
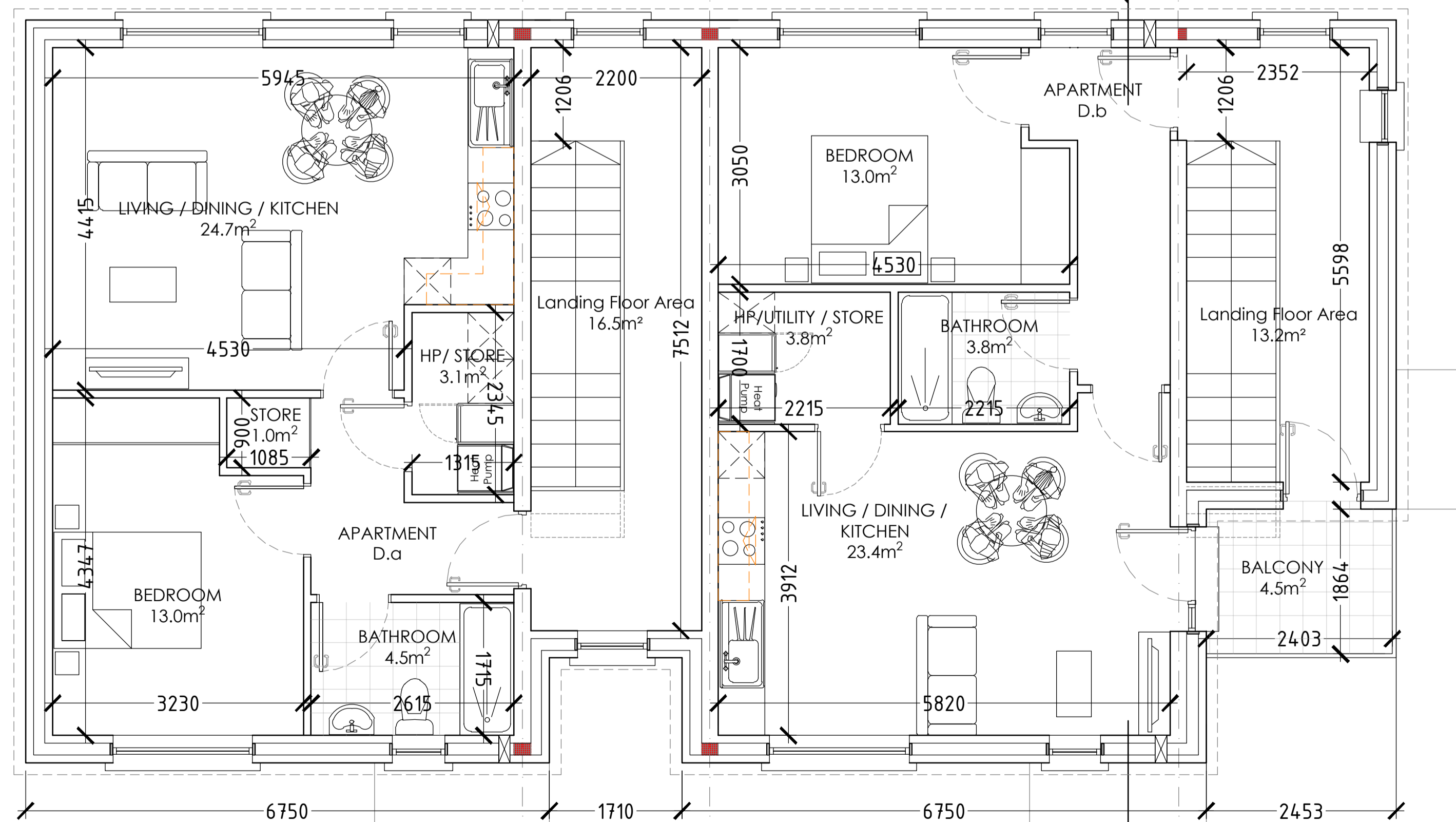


GROUND FLOOR PLAN [Duplex]
(Scale 1:50)



FIRST FLOOR PLAN
(Scale 1:50)



SECOND FLOOR PLAN
(Scale 1:50)

APARTMENT TYPE D.a
(On top of DX2)
1 Bed, 2 Person Apt.:

Areas:
Ground Floor: 16.5m²
First Floor: 16.5m²
Second Floor: 70.8m²
TOTAL: 103.8m²/1,117.3ft²
(Storage: 2.6m²)

APARTMENT TYPE D.b
(On top of DX2)
1 Bed, 2 Person Apt.:

Areas:
Ground Floor: 16.7m²
First Floor: 16.7m²
Second Floor: 65.8m²
TOTAL: 99.2m²/1,067.7ft²
(Storage: 3.8m²)

APARTMENT TYPE DX2
3 Bed, 5 Person Duplex Apt.:

Areas:
Ground Floor: 51.7m²
First Floor: 51.7m²
TOTAL: 103.4m²/1,112.9ft²
(Storage: 9.1m²)

PLANNING

Refer to Site Plan for exact location and level

Rev	Description	By	Date
<small>Galway: Suite 4 Clough White, Dublin Road, Galway, H91 V97E. E: info@vha.ie www.vha.ie Sligo: 3-3 Abbey Street, Abbeyquarter North, Sligo, F91 X160. T: 091 483 934 T: 071 915 0022 Maynooth: Office 20, Block B Maynooth Business Campus, Kildare. T: 071 915 0022</small>			
<small>© THIS DRAWING IS PROTECTED BY COPYRIGHT AND IS TO BE READ IN CONJUNCTION WITH ALL RELEVANT SPECIFICATIONS AND DRAWINGS. USE ONLY FOR THE PURPOSES INDICATED. DO NOT SCALE OFF THIS DRAWING. IT IS THE CONTRACTOR'S RESPONSIBILITY TO ENSURE COMPLIANCE WITH ALL ASPECTS OF THE CURRENT BUILDING REGULATIONS. IT IS THE CONTRACTOR'S RESPONSIBILITY TO ENSURE COMPLIANCE WITH ALL CONDITIONS IMPOSED BY THE LOCAL PLANNING AUTHORITY. # IN DOUBT ASK.</small>		Client: Kildare County Council Project: Proposed Housing Development at Ardclough Road, Celbridge, Co. Kildare Drawing Description: DUPLEX BUILDING DX2 Plans Status: Planning Date: May 2022	Scale: 1:50 @ A1 Drawing No: 210303-03-117 Rev: Drawn by: TS-SF-WF Checked by: BF