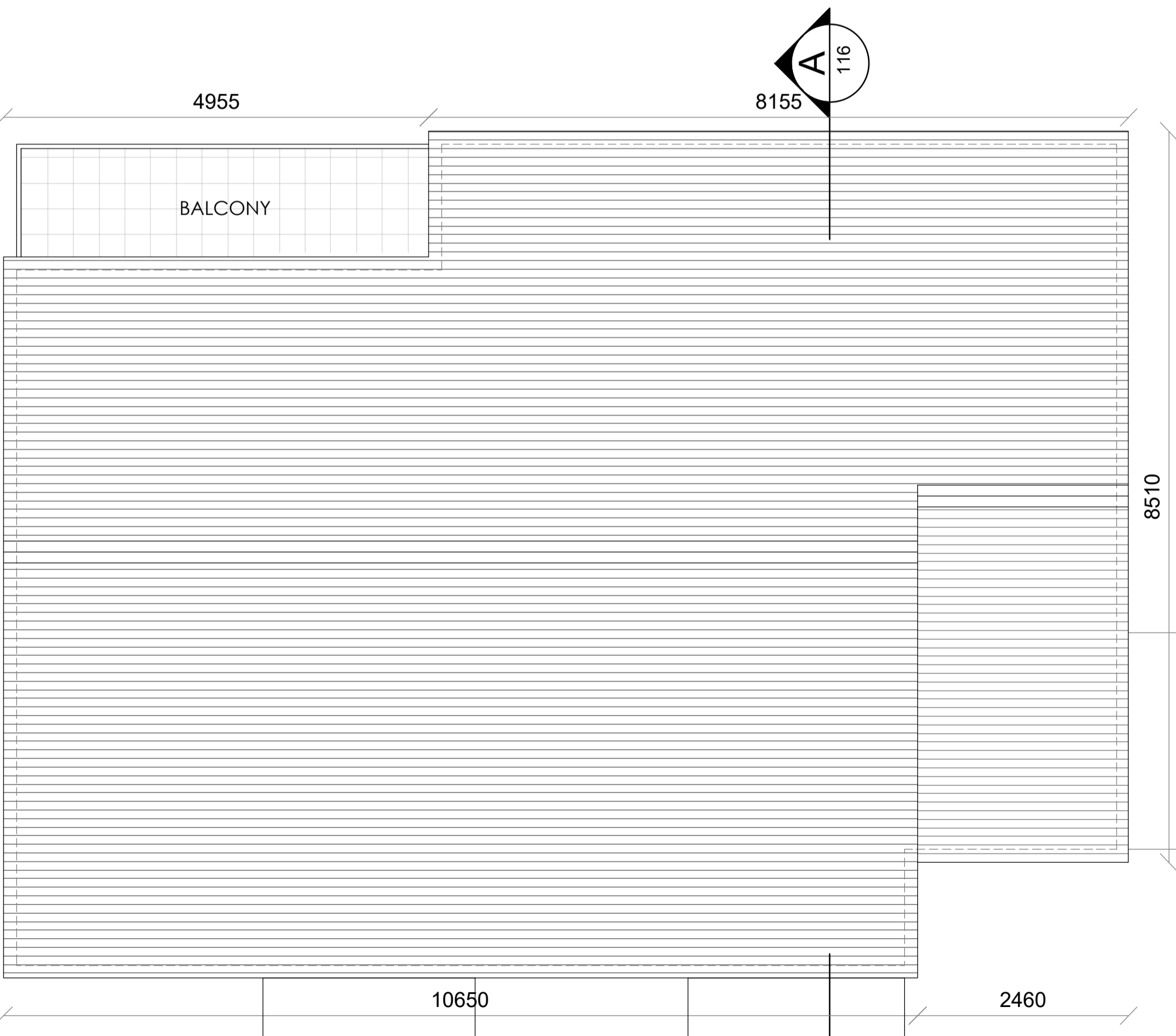
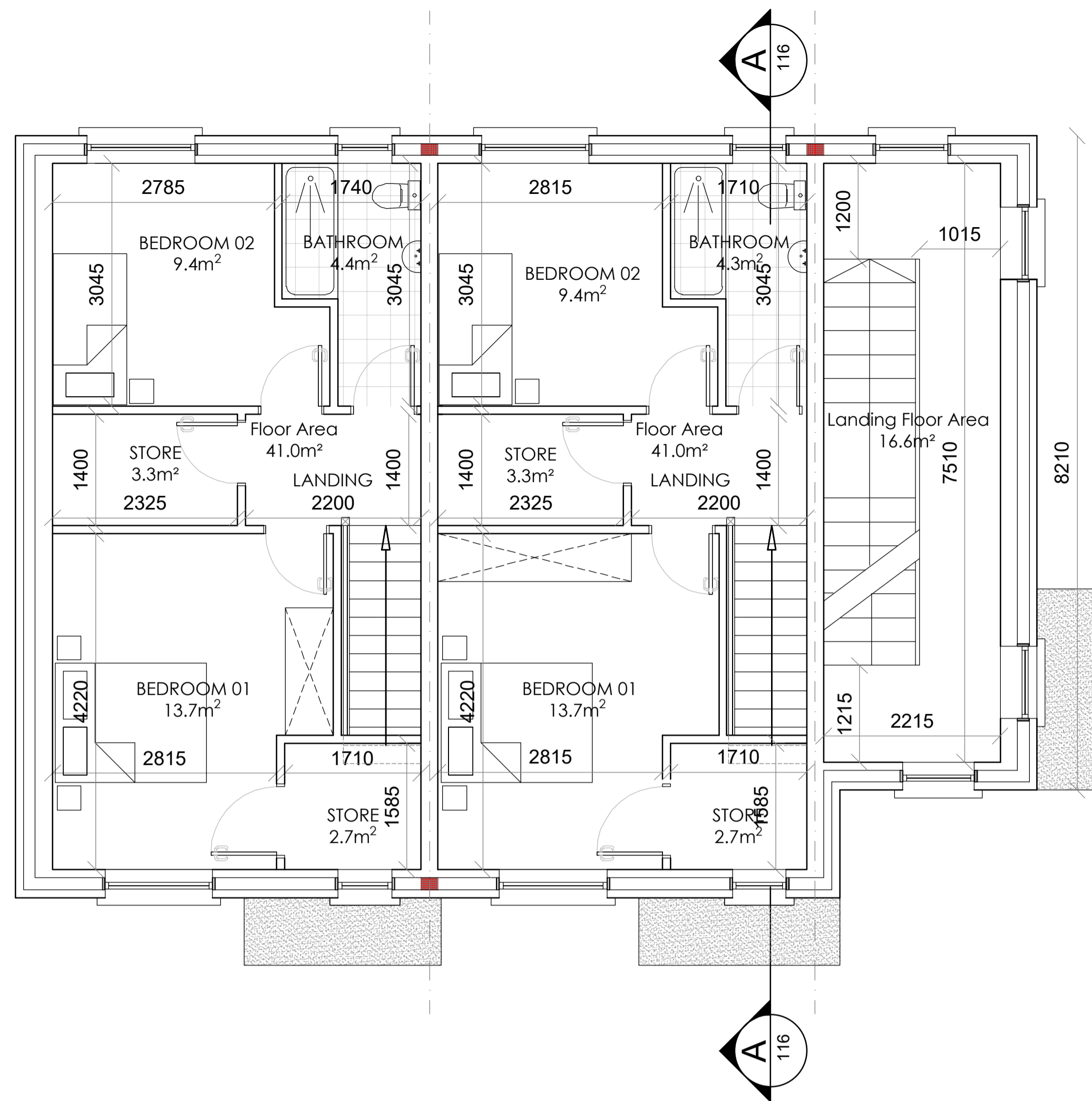


**SECOND FLOOR PLAN [2 Bed. Apt.]**  
(Scale 1:50)



**ROOF PLAN**  
(Scale 1:50)

**APARTMENT TYPE DX1**  
**2 Bed, 3 Person Duplex Apt.:**

**Areas:**  
 Ground Floor: 41.0m<sup>2</sup>  
 First Floor: 41.0m<sup>2</sup>  
**TOTAL: 82.0m<sup>2</sup> / 882.6ft<sup>2</sup>**  
 (Storage: 9.8m<sup>2</sup>)

**APARTMENT TYPE C**  
**(On top of DX1)**  
**2 Bed, 3 Person Apt.:**

**Areas:**  
 Ground Floor: 16.6m<sup>2</sup>  
 First Floor: 16.6m<sup>2</sup>  
 Second Floor: 96.7m<sup>2</sup>  
**TOTAL: 129.9m<sup>2</sup>/1,398.2ft<sup>2</sup>**  
 (Storage: 6.9m<sup>2</sup>)

**PLANNING**

Refer to Site Plan for exact location and level

Rev	Description	By	Date


**VINCENT HANNON ARCHITECTS**  
 Galway: Suite 4 Clough Mhille, Dublin Road, Galway, H91 V97E  
 Sligo: 1-3 Abbey Street, Abbeyquarter North, Sligo, F91 X160  
 Mayo: Office 20, Block B, Mayo Business Campus, Kildare  
 E: info@vha.ie T: 091 483 934 T: 071 915 0022 T: 071 915 0022  
 www.vha.ie

Client: Kildare County Council  
 Project: Proposed Housing Development at Ardclough Road, Celbridge, Co. Kildare  
 Drawing: DUPLEX BUILDING DX1  
 Description: Plans  
 Status: Planning  
 Drawing No: 210303-03-115  
 Date: May 2022  
 Drawn by: TS - SF - IWS  
 Checked by: BF

Scale: 1:50 @ A1  
 Rev: