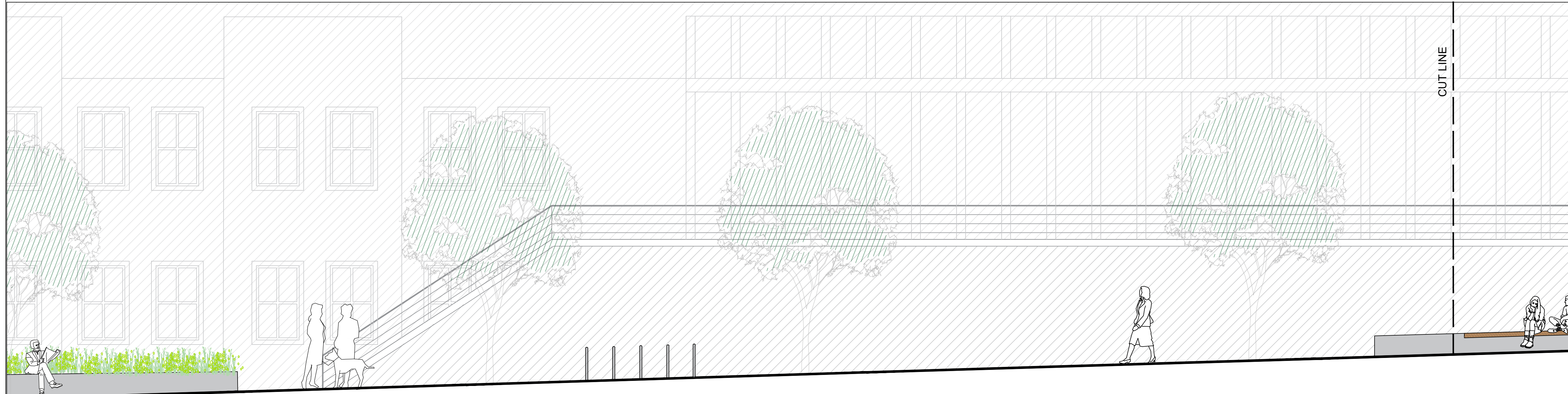




SECTION FF - LONG SECTION

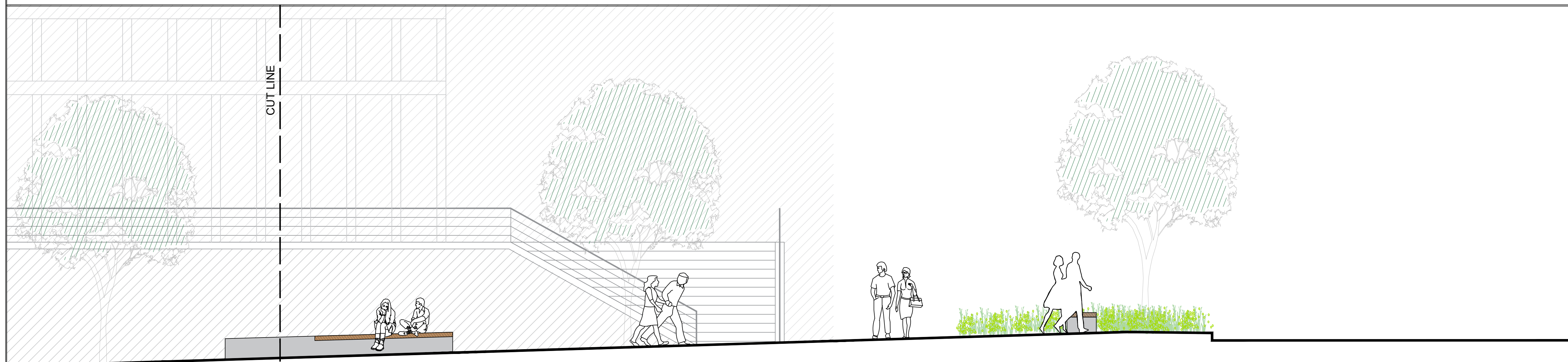


CUT LINE

5000
Existing Entrance to Riverbank Arts Centre

29164
Plaza with Seating Wall

01 SECTION FF



CUT LINE

12892
Existing Entrance to Riverbank Arts Centre

Existing Liffey Terrace

02 SECTION FF



PROJECT

CO. KILDARE
LIBRARY, NEWBRIDGE
KILDARE COUNTY

CLIENT

KILDARE CO. COUNCIL

Devoy Park, Naas Co. Kildare
W91 X77F
045980200 tel
<https://kildare.ie/countycouncil/index.html>

CONSULTANT

AECOM
24 Hatch Street Lower, Saint Kevin's
Dublin, Ireland, D02 TY88
+353 (0) 1 676 3671
<https://aecom.com/>

KEY

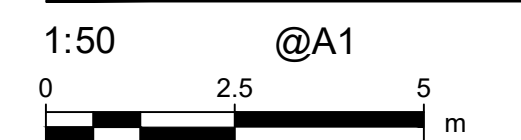


ISSUE/REVISION

I/R	DATE	DESCRIPTION
01	10/03/2023	PART 8 PLANNING

KEY PLAN

SCALE



PROJECT NUMBER

60669624

SHEET TITLE

LANDSCAPE SECTIONS
SHEET 5 OF 5

SHEET NUMBER

60669624-ACM-XX-00-DR-LA-00-6004

This drawing has been prepared for the use of AECOM's client. It may not be used, modified, reproduced or related upon by third parties, except as agreed by AECOM or as required by law. AECOM accepts no responsibility, and denies any liability whatsoever, to any party that uses or relies on this drawing without AECOM's express written consent. Do not scale this document. All measurements must be obtained from the stated dimensions.