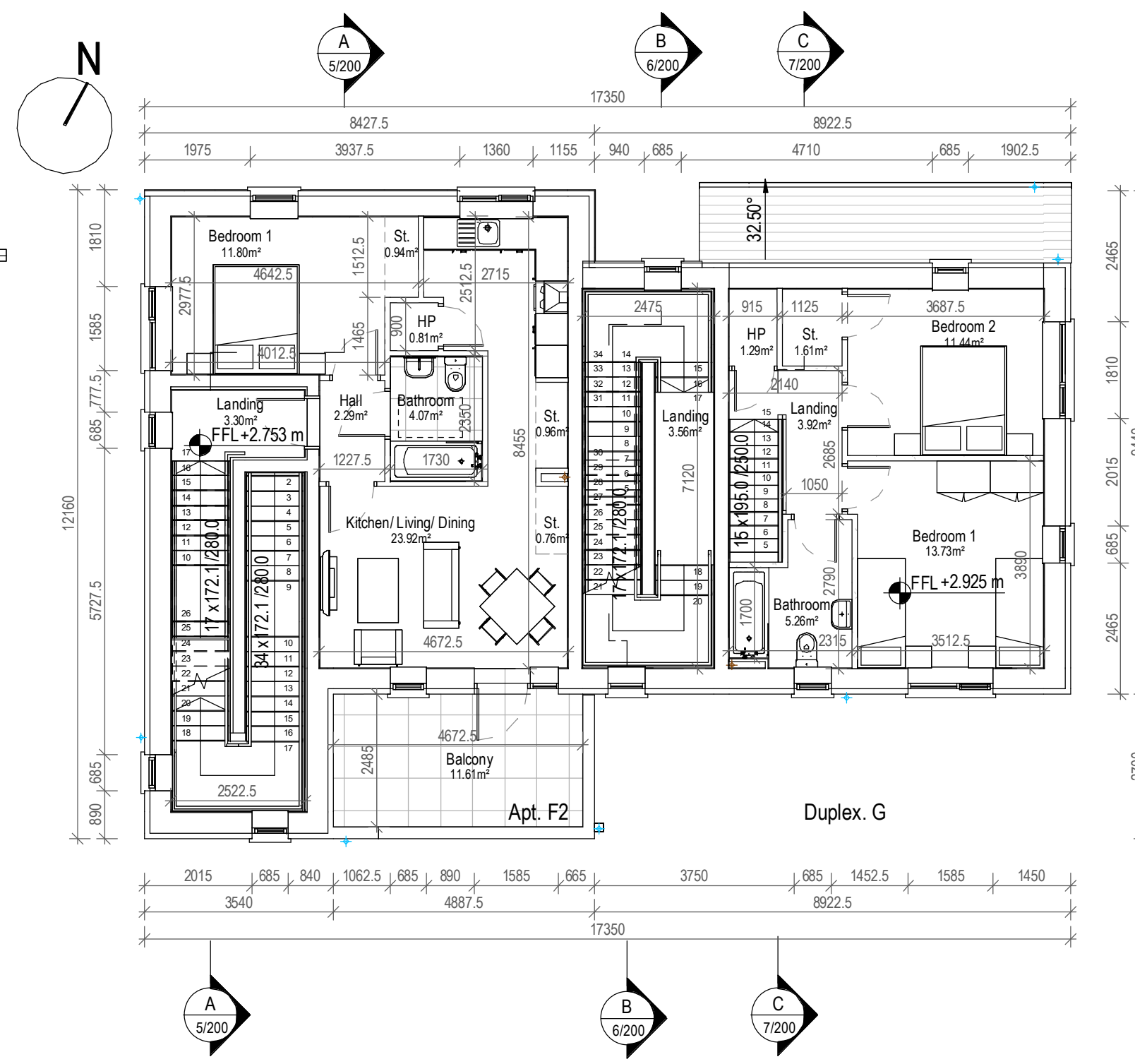
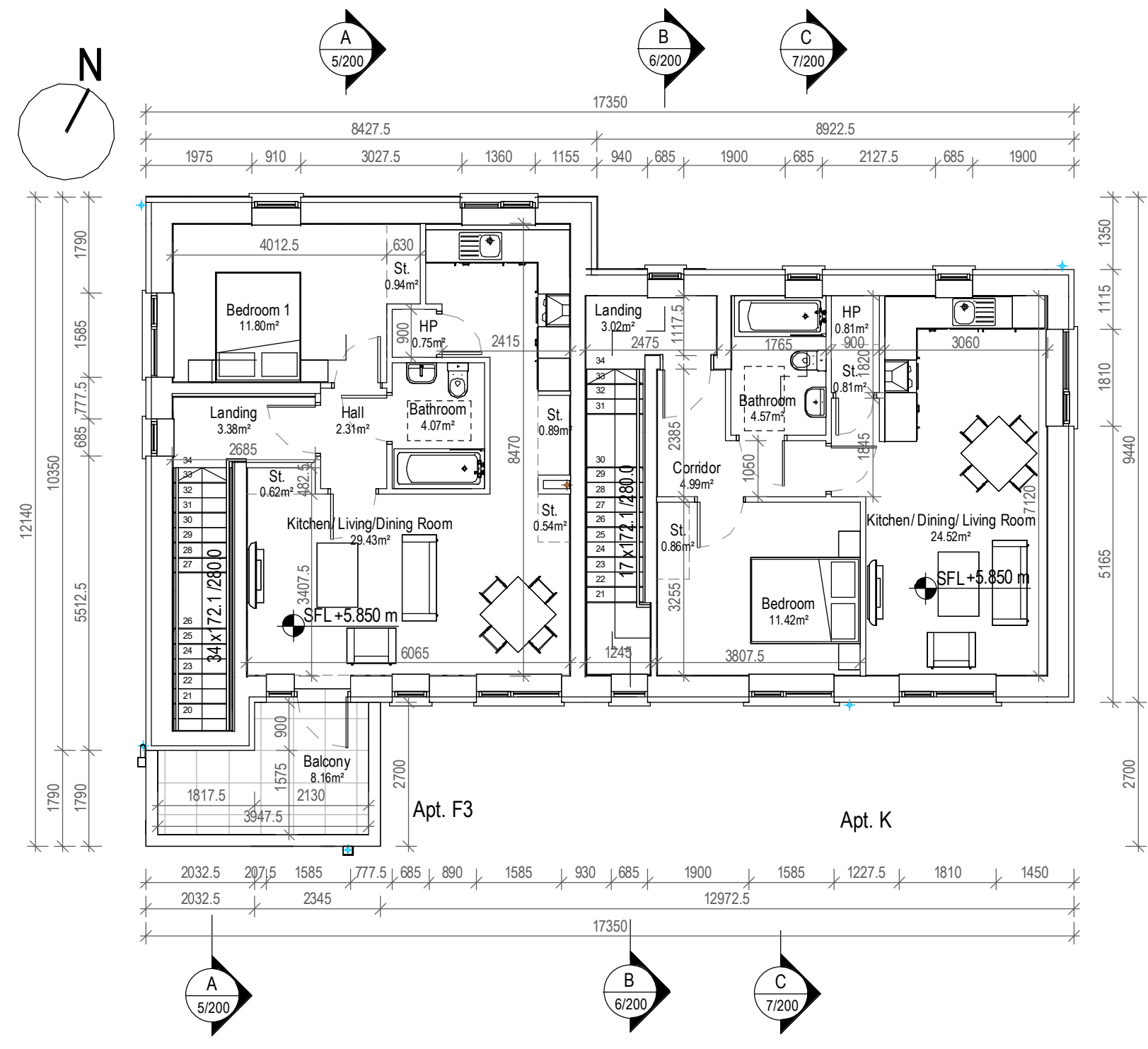


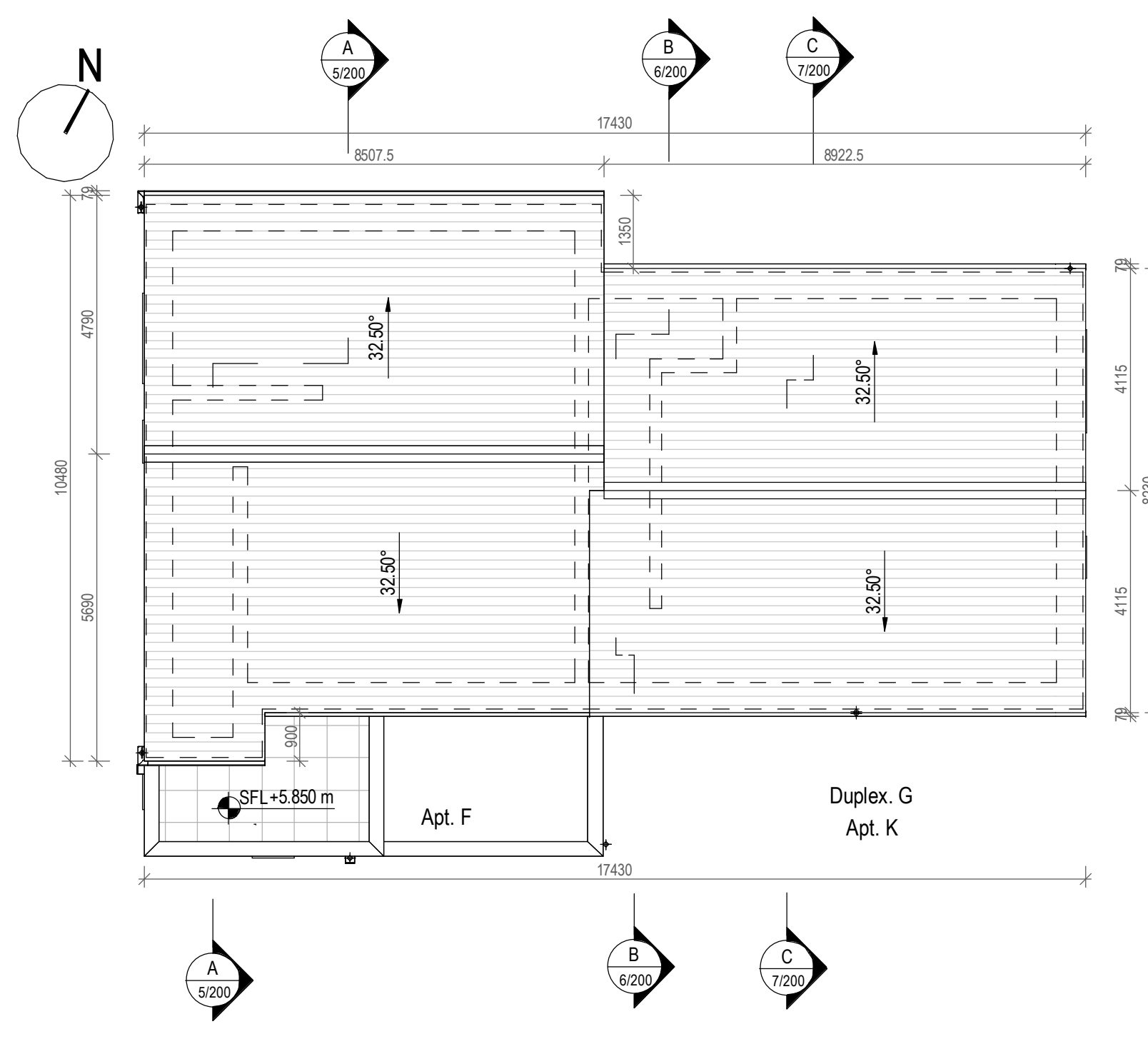
1 Ground Floor Plan  
1 : 100



2 First Floor Plan  
1 : 100



3 Second Floor Plan  
1 : 100



4 Roof Plan  
1 : 100

**Apt. F1 Room Schedule**

Name	Area
Hall	12.21 m <sup>2</sup>
Bathroom	5.50 m <sup>2</sup>
HP	0.98 m <sup>2</sup>
	18.69 m <sup>2</sup>

**Kitchen/ Dining/Living Room**

1. Liv	23.84 m <sup>2</sup>
2. Bedroom	11.87 m <sup>2</sup>
St.	0.86 m <sup>2</sup>
St.	1.68 m <sup>2</sup>
St.	0.83 m <sup>2</sup>
3. St.	3.36 m <sup>2</sup>
	57.76 m <sup>2</sup>

**Apt. F1 Gross Floor Area**

Level	Area
GFL	59.93 m <sup>2</sup>
Total	59.93 m <sup>2</sup>

**Apt. F2 Room Schedule**

Name	Area
Bathroom	4.07 m <sup>2</sup>
Hall	3.30 m <sup>2</sup>
HP	0.81 m <sup>2</sup>
Landing	3.30 m <sup>2</sup>
Hall	2.29 m <sup>2</sup>
	13.76 m <sup>2</sup>

**Kitchen/ Living/ Dining**

1. Liv	23.92 m <sup>2</sup>
Bedroom 1	11.80 m <sup>2</sup>
2. Bedroom	11.80 m <sup>2</sup>
St.	0.96 m <sup>2</sup>
St.	1.23 m <sup>2</sup>
St.	0.94 m <sup>2</sup>
St.	0.76 m <sup>2</sup>
3. St.	3.89 m <sup>2</sup>

**Apt. F2 Gross Floor Area**

Level	Area
FFL	47.39 m <sup>2</sup>
Total	47.39 m <sup>2</sup>

**Apt. F3 Room Schedule**

Name	Area
Bathroom	4.07 m <sup>2</sup>
Landing	3.38 m <sup>2</sup>
Hall	2.31 m <sup>2</sup>
Hall	3.67 m <sup>2</sup>
HP	0.75 m <sup>2</sup>
	14.18 m <sup>2</sup>

**Kitchen/ Living/Dining Room**

1. Liv	29.43 m <sup>2</sup>
Bedroom 1	11.80 m <sup>2</sup>
2. Bedroom	11.80 m <sup>2</sup>
St.	0.62 m <sup>2</sup>
St.	0.94 m <sup>2</sup>
St.	1.23 m <sup>2</sup>
St.	0.89 m <sup>2</sup>
St.	0.54 m <sup>2</sup>
3. St.	4.22 m <sup>2</sup>

**Apt. F3 Gross Floor Area**

Level	Area
SFL	52.81 m <sup>2</sup>
Total	52.81 m <sup>2</sup>

**Apt. K Room Schedule**

Name	Area
Bathroom	4.57 m <sup>2</sup>
Corridor	4.99 m <sup>2</sup>
Hall	13.49 m <sup>2</sup>
Landing	3.56 m <sup>2</sup>
Landing	3.02 m <sup>2</sup>
HP	0.81 m <sup>2</sup>
	30.44 m <sup>2</sup>

**Kitchen/ Dining/ Living Room**

1. Liv	24.52 m <sup>2</sup>
Bedroom	11.42 m <sup>2</sup>
2. Bedroom	11.42 m <sup>2</sup>
St.	0.81 m <sup>2</sup>
St.	0.86 m <sup>2</sup>
St.	2.77 m <sup>2</sup>
3 St.	4.45 m <sup>2</sup>

**Apt. K Gross Floor Area**

Level	Area
SFL	49.76 m <sup>2</sup>
Total	49.76 m <sup>2</sup>

Quality Housing for Sustainable Communities space provision

Apt. F1	Dwelling Type	Gross Floor Area	Minimum Main Living Room Area	Aggregate Living Area	Aggregate Bedroom Area	Storage Area
Target	1 Bed 2P House	45	11	23	11	3
Proposed	1 Bed 2P House	59.93	11	23.84	11.87	4.35

PLEASE NOTE:  
Minimum unobstructed living room width 3.6m.  
Main bedroom area 13m<sup>2</sup>, Double room 11.4m<sup>2</sup> (2.8m minimum width), Single room 7.1m<sup>2</sup> (2.1m minimum width)

Quality Housing for Sustainable Communities space provision

Apt. F2	Dwelling Type	Gross Floor Area	Minimum Main Living Room Area	Aggregate Living Area	Aggregate Bedroom Area	Storage Area
Target	1 Bed 2P House	45	11	23	11	3
Proposed	1 Bed 2P House	47.39	11	23.92	11.80	3.47

PLEASE NOTE:  
Minimum unobstructed living room width 3.6m.  
Main bedroom area 13m<sup>2</sup>, Double room 11.4m<sup>2</sup> (2.8m minimum width), Single room 7.1m<sup>2</sup> (2.1m minimum width)

Quality Housing for Sustainable Communities space provision

Apt. F3	Dwelling Type	Gross Floor Area	Minimum Main Living Room Area	Aggregate Living Area	Aggregate Bedroom Area	Storage Area
Target	1 Bed 2P House	45	11	23	11	3
Proposed	1 Bed 2P House	52.81	11	29.43	11.80	3.74

PLEASE NOTE:  
Minimum unobstructed living room width 3.6m.  
Main bedroom area 13m<sup>2</sup>, Double room 11.4m<sup>2</sup> (2.8m minimum width), Single room 7.1m<sup>2</sup> (2.1m minimum width)

Quality Housing for Sustainable Communities space provision

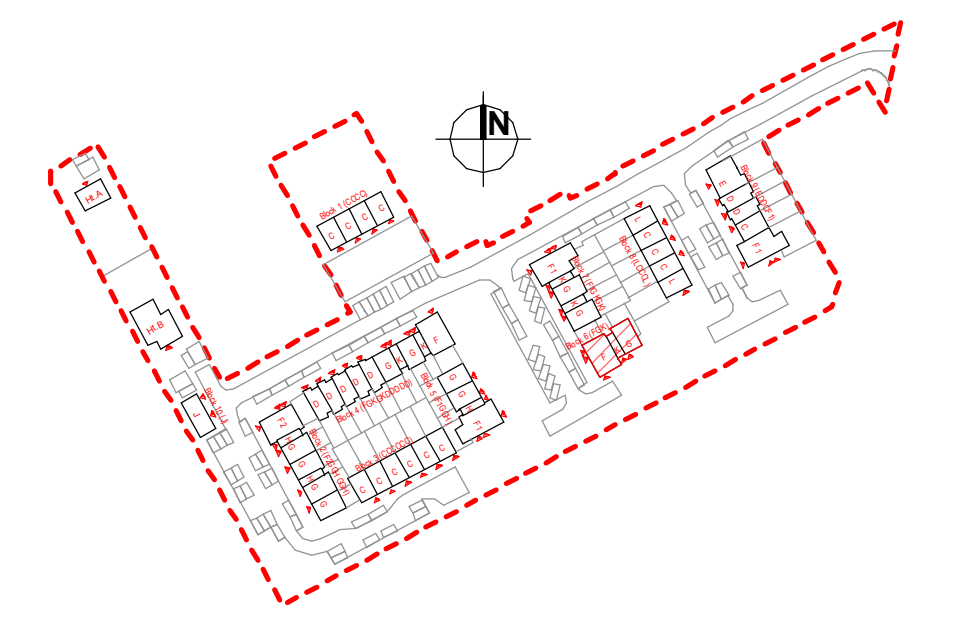
Duplex G	Dwelling Type	Gross Floor Area	Minimum Main Living Room Area	Aggregate Living Area	Aggregate Bedroom Area	Storage Area
Target	2 Bed 4P House	85	13	30	25	6
Proposed	2 Bed 4P House	88.72	13	31.57	25.17	8.44

PLEASE NOTE:  
Minimum unobstructed living room width 3.6m.  
Main bedroom area 13m<sup>2</sup>, Double room 11.4m<sup>2</sup> (2.8m minimum width), Single room 7.1m<sup>2</sup> (2.1m minimum width)

Quality Housing for Sustainable Communities space provision

Apt. K	Dwelling Type	Gross Floor Area	Minimum Main Living Room Area	Aggregate Living Area	Aggregate Bedroom Area	Storage Area
Target	1 Bed 2P House	45	11	23	11	3
Proposed	1 Bed 2P House	49.75	11	24.52	11.05	3.01

PLEASE NOTE:  
Minimum unobstructed living room width 3.6m.  
Main bedroom area 13m<sup>2</sup>, Double room 11.4m<sup>2</sup> (2.8m minimum width), Single room 7.1m<sup>2</sup> (2.1m minimum width)



Key Plan  
1 : 2500

Rev.	By	Date	Description
A	JC	16/08/2022	First Issue For Planning



Mill House, Mill Street, Dundalk, Co. Louth  
+353 (0) 42 935 4466  
info@vandijkarchitects.com  
www.vandijkarchitects.com

Drawing Title	
Block 6 (FGK)	General Plans

Scale	Drawing Number	Job	Client
1:100	2043-PA-BL4-100	Greenfields Maynooth	Kildare Co. Co.
A	A1	2043-PA-BL4-100-200	
Prepared by	Checked by	Date	
MS	KH	September 2021	

All works to be carried out using proper materials which are fit for the use they are intended and for the condition in which they are to be used. All materials used in connection with the works to comply with the construction products regulation (EU) no. 305/2011 and the harmonised technical specifications/standards that fall within the remit of the CEN no. 305/2011. Figured dimensions must be used in preference to scaled dimensions. Any dimensional discrepancies must be reported to the Architect immediately. This drawing remains the copyright of van Dijk Architects. It must not be used for any purpose building or otherwise without the express permission of the practice. Do not copy or redistribute these drawings or any additional information without the expressed approval of van Dijk Architects.