

Ht. D Room Schedule	
Name	Area
St.	0.56 m ²
St.	0.60 m ²
	1.16 m ²
Bathroom	4.51 m ²
Hall	1.38 m ²
Hall	3.12 m ²
HP	1.22 m ²
Landing	3.90 m ²
WC	1.60 m ²
	15.72 m ²
Kitchen/Dining	14.35 m ²
Living Room	17.09 m ²
1. Liv	31.44 m ²
Bedroom 1	13.29 m ²
Bedroom 2	13.06 m ²
2. Bedroom	26.35 m ²
St.	1.48 m ²
St.	1.46 m ²
St.	0.96 m ²
3. St.	5.32 m ²
	80.00 m ²

Duplex G Room Schedule	
Name	Area
Bathroom	5.26 m ²
Landing	3.92 m ²
Hall	7.24 m ²
WC	2.97 m ²
HP	1.29 m ²
	20.68 m ²
Kitchen & Living Room	31.57 m ²
1. Liv	31.57 m ²
Bedroom 2	11.44 m ²
Bedroom 1	13.73 m ²
2 Bedroom	25.17 m ²
Utility/St.	5.54 m ²
St.	1.61 m ²
St.	1.06 m ²
3 Storage	8.21 m ²
	85.62 m ²

Apt. F1 Room Schedule	
Name	Area
Hall	12.21 m ²
Bathroom	5.50 m ²
HP	0.98 m ²
	18.69 m ²
Kitchen/ Dining/Living Room	23.84 m ²
1. Liv	23.84 m ²
Bedroom 1	11.87 m ²
2. Bedroom	11.87 m ²
St.	0.86 m ²
St.	1.68 m ²
St.	0.83 m ²
3. St.	3.36 m ²
	57.76 m ²

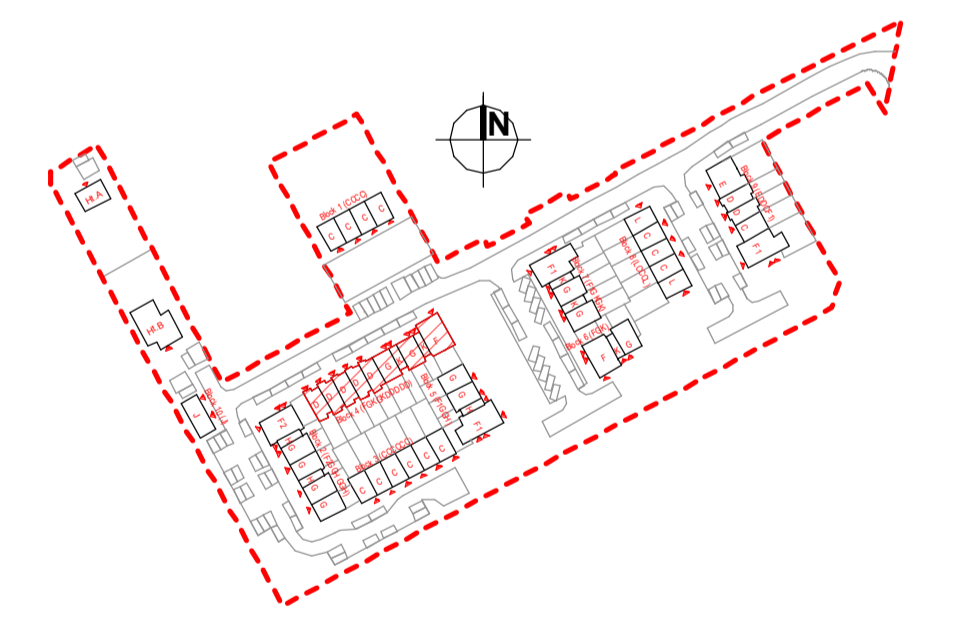
Ht. D Gross Floor Area	
Level	Area
GFL	44.82 m ²
FFL	40.22 m ²
Total	85.04 m ²

Duplex G Gross Floor Area	
Level	Area
GFL	49.20 m ²
FFL	37.98 m ²
Total	87.18 m ²

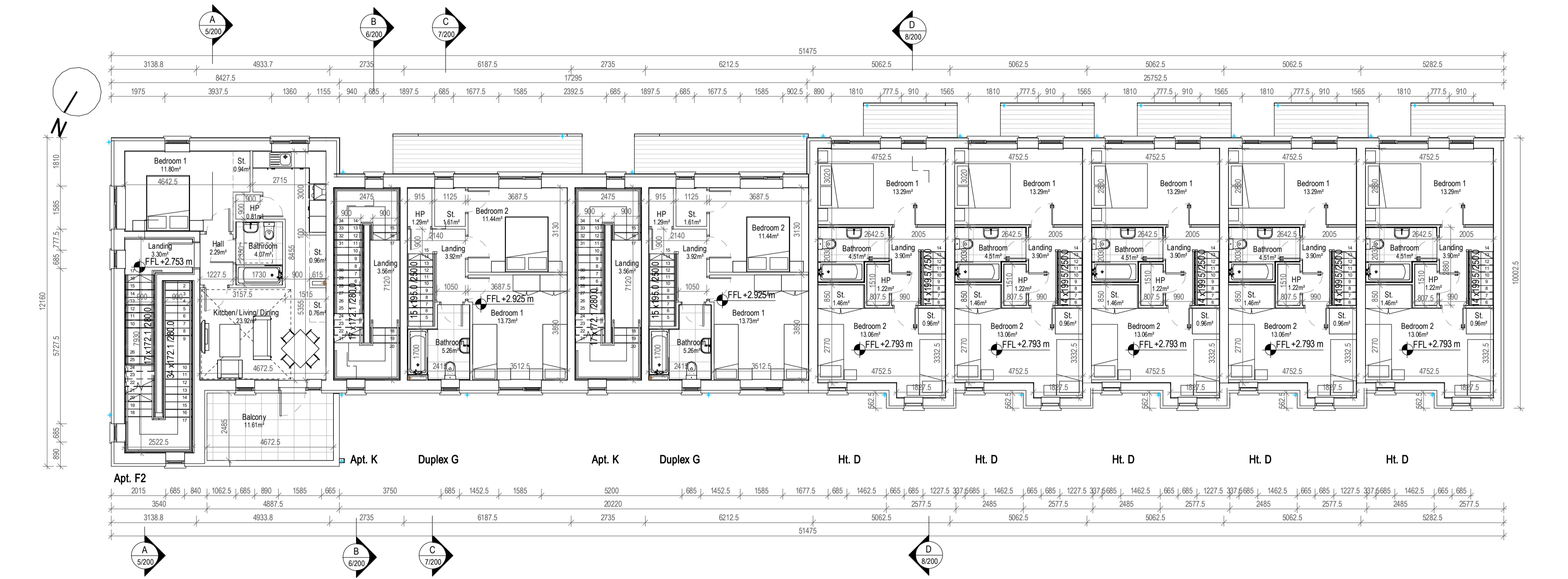
Apt. F1 Gross Floor Area	
Level	Area
GFL	59.93 m ²
Total	59.93 m ²

Apt. F2 Room Schedule	
Name	Area
Bathroom	4.07 m ²
Hall	3.30 m ²
HP	0.81 m ²
Landing	3.30 m ²
Hall	2.29 m ²
	13.76 m ²
Kitchen/ Living/ Dining	23.92 m ²
1. Liv	23.92 m ²
Bedroom 1	11.80 m ²
2. Bedroom	11.80 m ²
St.	0.96 m ²
St.	1.23 m ²
St.	0.94 m ²
St.	0.76 m ²
3. St.	3.89 m ²
	53.37 m ²

Apt. F2 Gross Floor Area	
Level	Area
FFL	47.39 m ²
Total	47.39 m ²



1 Ground Floor Plan
1 : 100



2 First Floor Plan
1 : 100

Quality Housing for Sustainable Communities space provision						
Apt. F1	Dwelling Type	Gross Floor Area	Minimum Main Living Room Area	Aggregate Living Area	Aggregate Bedroom Area	Storage Area
Target	1 Bed 2P House	45	11	23	11	3
Proposed	1 Bed 2P House	59.93	11	23.84	11.87	4.35

PLEASE NOTE:
Minimum unobstructed living room width 3.6m.
Main bedroom area 13m², Double room 11.4m² (2.8m minimum width), Single room 7.1m² (2.1m minimum width)

Quality Housing for Sustainable Communities space provision						
Apt. F2	Dwelling Type	Gross Floor Area	Minimum Main Living Room Area	Aggregate Living Area	Aggregate Bedroom Area	Storage Area
Target	1 Bed 2P House	45	11	23	11	3
Proposed	1 Bed 2P House	47.39	11	23.92	11.80	3.47

PLEASE NOTE:
Minimum unobstructed living room width 3.6m.
Main bedroom area 13m², Double room 11.4m² (2.8m minimum width), Single room 7.1m² (2.1m minimum width)

Quality Housing for Sustainable Communities space provision						
Duplex G	Dwelling Type	Gross Floor Area	Minimum Main Living Room Area	Aggregate Living Area	Aggregate Bedroom Area	Storage Area
Target	2 Bed 4P House	85	13	30	25	6
Proposed	2 Bed 4P House	87.18	13	31.57	24.88	8.44

PLEASE NOTE:
Minimum unobstructed living room width 3.6m.
Main bedroom area 13m², Double room 11.4m² (2.8m minimum width), Single room 7.1m² (2.1m minimum width)

Quality Housing for Sustainable Communities space provision						
Ht. D	Dwelling Type	Gross Floor Area	Minimum Main Living Room Area	Aggregate Living Area	Aggregate Bedroom Area	Storage Area
Target	2 Bed 4P House	85	13	30	25	6
Proposed	2 Bed 4P House	85.04	13	31.44	26.35	6.18

PLEASE NOTE:
Minimum unobstructed living room width 3.6m.
Main bedroom area 13m², Double room 11.4m² (2.8m minimum width), Single room 7.1m² (2.1m minimum width)

Rev.	By	Date	Description
A	JC	16/08/2022	First Issue for Planning



Mill House, Mill Street., Dundalk, Co. Louth
+353 (0) 42 935 4466
info@vandijkarchitects.com
www.vandijkarchitects.com

Drawing Title: **Block 4 (FGKGDDDD)**
Ground & First Floor Plans

Scale	Drawing No.	Job	Client
1:100	2043-PA-BL4-100	Greenfields Maynooth	Kildare Co. Co.
A	A1	2043-PA-BL4-100-200	
MS	MS		September 2021

All works to be carried out using proper materials which are fit for the use they are intended and for the condition in which they are to be used. All materials used in connection with the works to comply with the construction products regulation (EU) no. 305/2011 and the harmonised technical specifications/standards that fall within the remit of the CEN no. 305/2011. Figured dimensions must be used in preference to scaled dimensions. Any dimensional discrepancies must be reported to the Architect immediately. This drawing remains the copyright of van Dijk Architects. It must not be used for any purpose building or otherwise without the express permission of the practice. Do not copy or redistribute these drawings or any additional information without the expressed approval of van Dijk Architects.