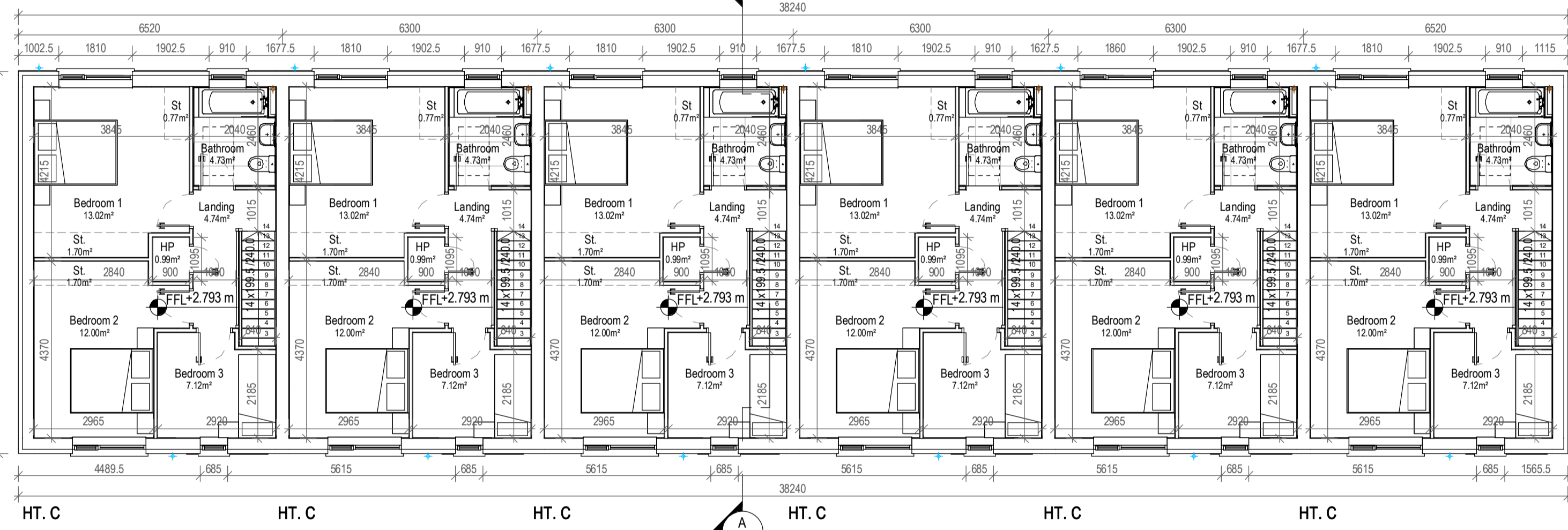
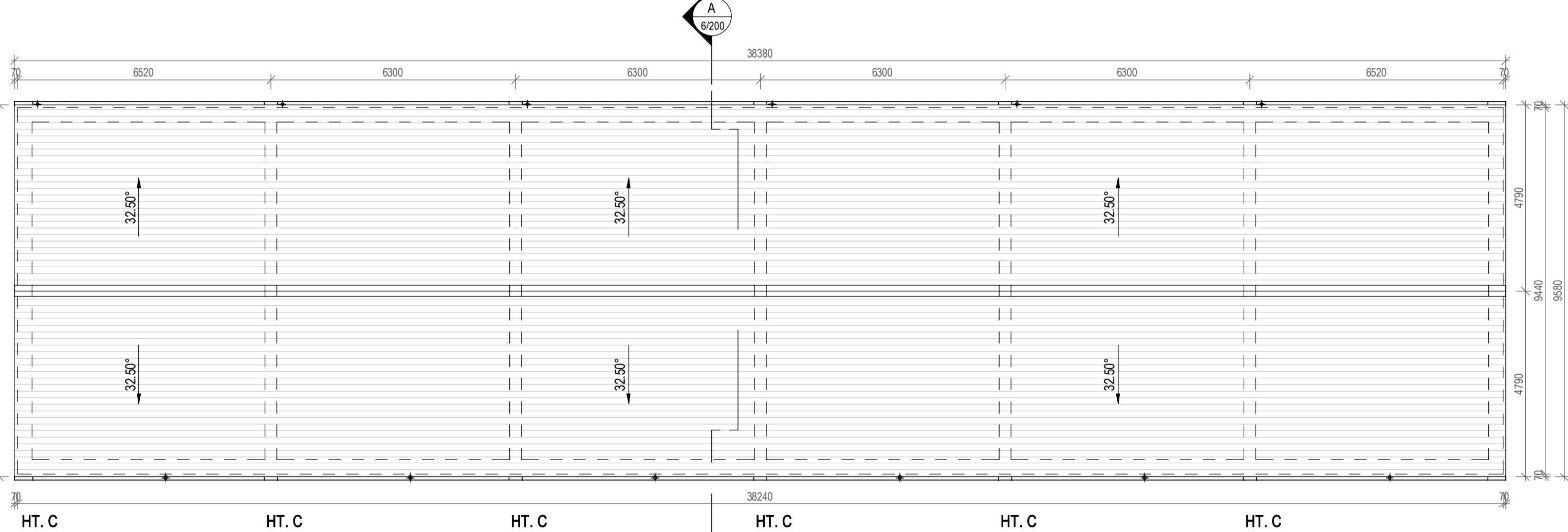


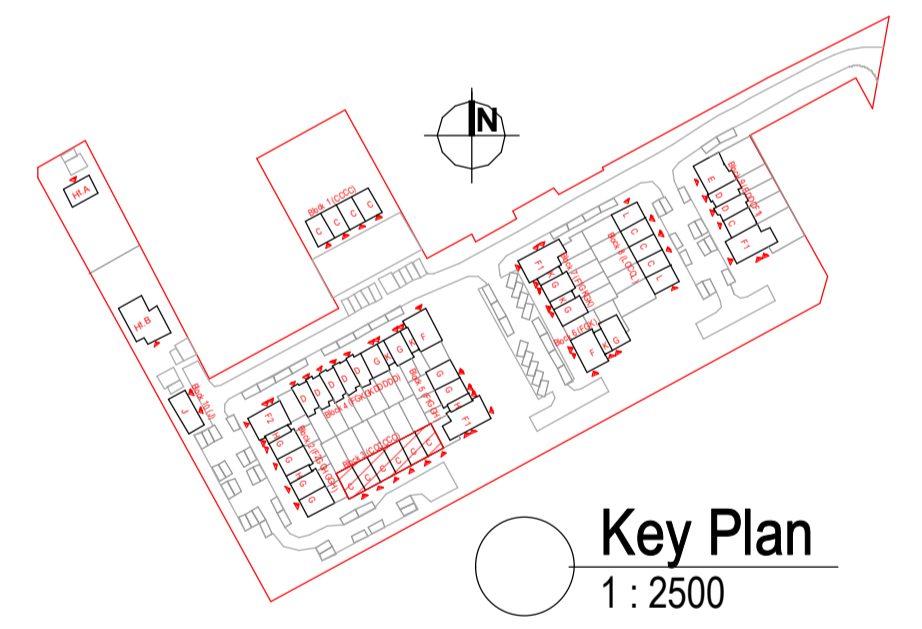
1 Ground Floor Plan  
1 : 100



2 First Floor Plan  
1 : 100



3 Roof Plan  
1 : 100



Key Plan  
1 : 2500

Ht. C Gross Floor Area	
Level	Area
GFL	51.42 m <sup>2</sup>
FFL	49.21 m <sup>2</sup>
<b>Total</b>	<b>100.63 m<sup>2</sup></b>

Ht. C Room Schedule	
Name	Area
Bathroom	4.73 m <sup>2</sup>
Hall	7.53 m <sup>2</sup>
HP	0.99 m <sup>2</sup>
Landing	4.74 m <sup>2</sup>
WC	2.14 m <sup>2</sup>
	20.13 m <sup>2</sup>
Kitchen/ Dining	18.62 m <sup>2</sup>
Living Room	15.39 m <sup>2</sup>
1 Living Area	34.01 m <sup>2</sup>

Ht. C Room Schedule	
Name	Area
Bedroom 1	13.02 m <sup>2</sup>
Bedroom 2	12.00 m <sup>2</sup>
Bedroom 3	7.12 m <sup>2</sup>
2 Bedroom	32.14 m <sup>2</sup>
St	0.77 m <sup>2</sup>
St	1.70 m <sup>2</sup>
St	1.70 m <sup>2</sup>
St	2.18 m <sup>2</sup>
St	2.68 m <sup>2</sup>
3 Storage	9.02 m <sup>2</sup>
	95.30 m <sup>2</sup>

Rev.	By	Date	Description
B	AP	16/08/2022	First Issue For Planning



Mill House, Mill Street, Dundalk, Co. Louth  
+353 (0) 42 935 4466  
info@vandijkarchitects.com  
www.vandijkarchitects.com

Drawing Title	<b>BL3 (CCCCC) General Plans</b>
---------------	--------------------------------------

Scale	Drawing Number	Job	Client
1:100	2043-PA-BL3-100	Greenfields Maynooth	Kildare Co. Co.
MS	2043-PA-BL3-100-200		
B	DR		September 2021

Quality Housing for Sustainable Communities space provision						
Ht.C	Dwelling Type	Gross Floor Area	Minimum Main Living Room Area	Aggregate Living Area	Aggregate Bedroom Area	Storage Area
Target	3 Bed 5P House	100	13	34	32	9
Proposed	3 Bed 5P House	100.6	13	34.01	32.14	10.02

PLEASE NOTE:  
Minimum unobstructed living room width 3.8m.  
Main bedroom area 13m<sup>2</sup>, Double room 11.4m<sup>2</sup> (2.8m minimum width), Single room 7.1m<sup>2</sup> (2.1m minimum width)

All works to be carried out using proper materials which are fit for the use they are intended and for the condition in which they are to be used. All materials used in connection with the works to comply with the construction products regulation (EU) no. 305/2011 and the harmonised technical specifications/standards that fall within the remit of the CPR no. 305/2011. Figured dimensions must be used in preference to scaled dimensions. Any dimensional discrepancies must be reported to the Architect immediately. This drawing remains the copyright of van Dijk Architects. It must not be used for any purpose building or otherwise without the express permission of the practice. Do not copy or redistribute these drawings or any additional information without the expressed approval of van Dijk Architects.