



Public Consultation – Celbridge to Hazelhatch Link Road Emerging Preferred Route Corridor

28th March – 6th May 2022

Kildare County Council is developing the Celbridge to Hazelhatch Link Road Scheme. This is a second non-statutory Public Consultation.

The Project Team seeks feedback from the public and interested parties on the Emerging Preferred Route Corridor identified for the scheme.

We would like to hear your views on the Emerging Preferred Route Corridor by **5pm on Friday 6th May 2022**.

Need for the Scheme

Kildare County Council successfully secured funding from the Department of Housing Planning and Local Government (DoHPLG) under the Urban Regeneration Development Fund (URDF).

Celbridge is an important regional town within Kildare and a significant commuter town for Dublin and other noteworthy employment centres in the region. Celbridge has seen its population more than double in the past 30 years with over 70% of the population living north of the River Liffey.

Traffic demands in Celbridge are likely to grow significantly in the coming decade with substantial lands south of the town centre earmarked for development. The existing road network in and around Celbridge town centre, including the existing bridge over the River Liffey, is substandard and experiences significant daily traffic congestion.

The new Celbridge to Hazelhatch Link Road Scheme will benefit all road users and deliver local improvements through:

- ✓ Improving connectivity to Hazelhatch Train Station
- ✓ Improved safety for pedestrians and cyclists
- ✓ Facilitate development of zoned lands
- ✓ Result in shorter, safer and more sustainable journeys to Hazelhatch Train Station





What's Happening Now

The Celbridge to Hazelhatch Link Road Scheme is now progressing through the 'Option Selection' phase.

The project team has undertaken an appraisal, in accordance with TII Project Management Guidelines, of the Five Route Corridor Options published in February 2021. The feedback received through the first non-statutory Public Consultation has been considered during the process of identifying an 'Emerging Preferred Route Corridor'. We now seek your feedback on this Emerging Preferred Route Corridor.

Emerging Preferred Route Corridor

Description of the Emerging Preferred Route Corridor

The Emerging Preferred Route Corridor is identified to be Option C (yellow) presented to the public during the first non-statutory Public Consultation.

The Emerging Preferred Route Corridor is circa 2.1km in length. It commences at R403 Clane Road between the service station and the garden centre adjacent to Celbridge Abbey. The route travels south between the garden centre and the Abbeyfarm housing estate. It then crosses the River Liffey via new bridge structure, with a proposed junction at the Newtown Road. The route travels south east along the edge of Temple Manor housing estate, crosses Simonstown Manor Drive, with a proposed junction here also, before connecting to R405 Hazelhatch Road via another junction. It then continuous as an upgrade to the existing road, along R405 Hazelhatch Road to the roundabout at Hazelhatch train station. The preliminary cross section for the Emerging Preferred Route is proposed as a single carriageway road, which includes segregated off-road cycle track and footpath facilities with grassed verges.

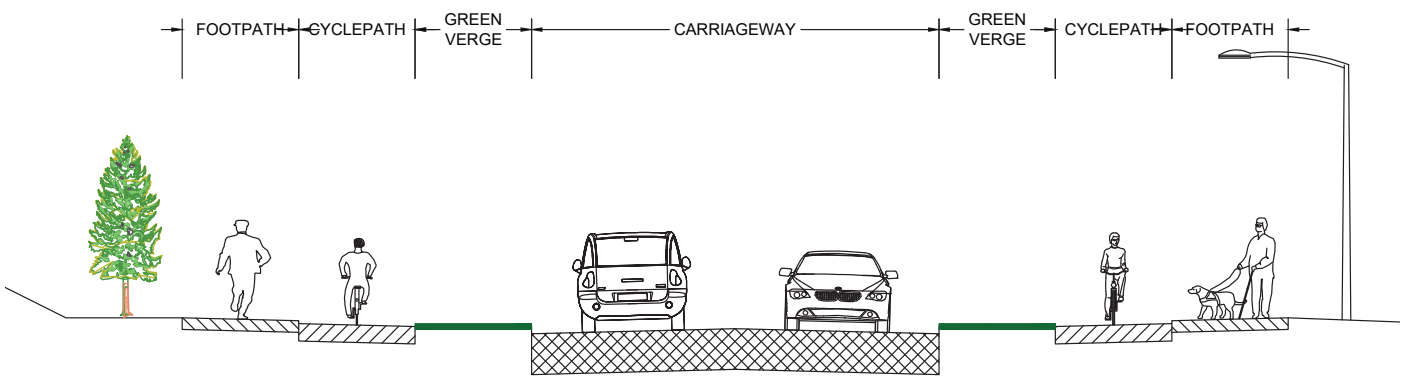
Assessment of Emerging Preferred Route Corridor

The Emerging Preferred Route Corridor is the route corridor identified as providing the optimum combination of benefits and impacts with regard to the 6 criteria considered for transport projects:

- Economy
- Safety
- Environment
- Integration
- Accessibility and Social Inclusion
- Physical Activity

Following completion of Stage 2 Project Appraisal Process, Option C was identified as the Emerging Preferred Corridor for the following reasons:

- Taking into account the full range of environmental assessments, Option C presents as being the least adversely impactful of all the options
- Option C performed very well under Economy with the highest Benefit to Cost Ratio (BCR) and the lowest overall cost for the scheme
- Option C provides highly positive benefits under Safety, Integration, Accessibility & Social Inclusion as well as Physical Activity.

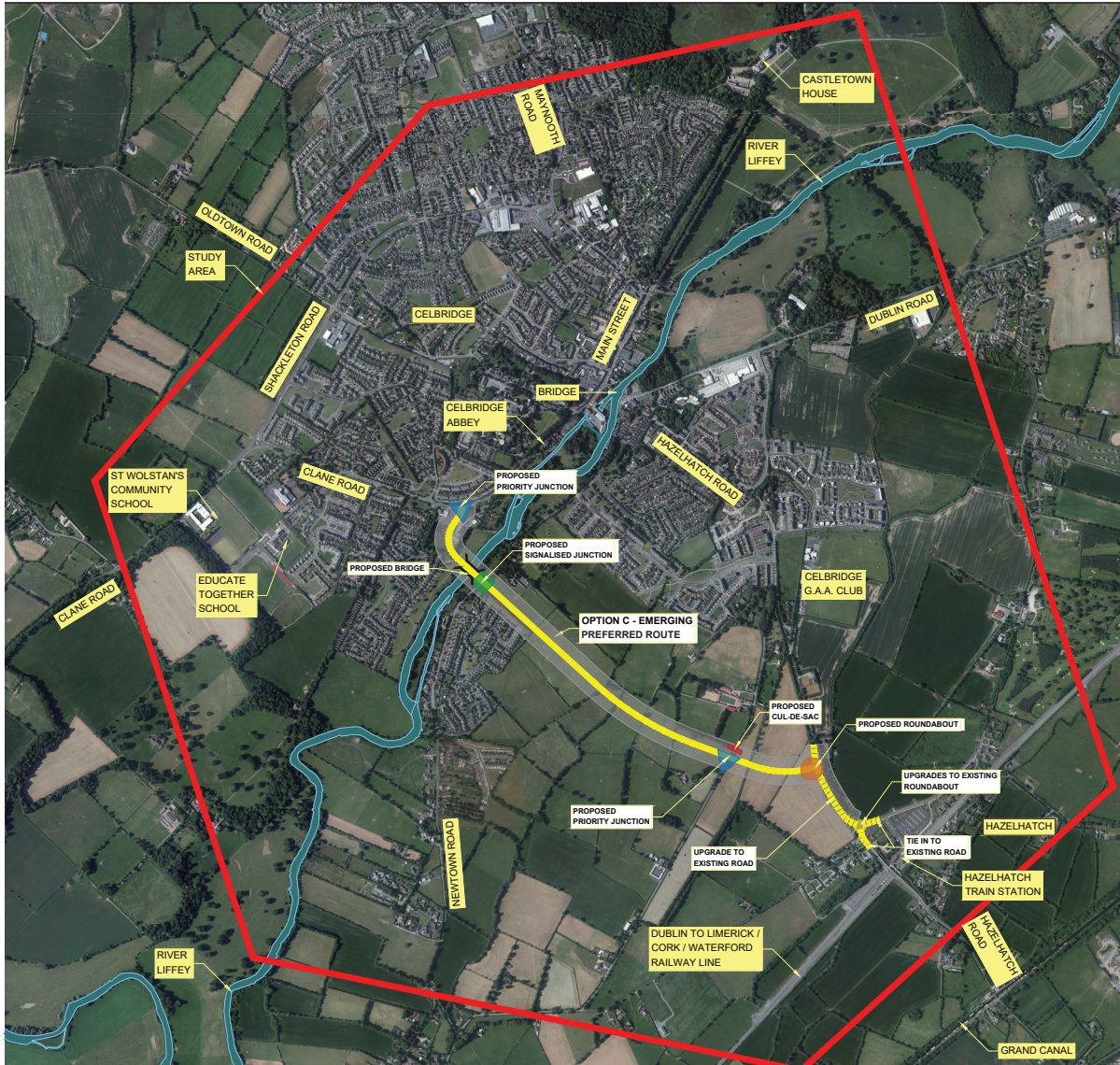


PROPOSED TYPICAL OFFLINE CROSS SECTION



Route Corridor Options

We want to hear your views on the Emerging Preferred Route Corridor. We welcome your feedback on any issues or information which you think should be considered in the identification of the Final Preferred Route.



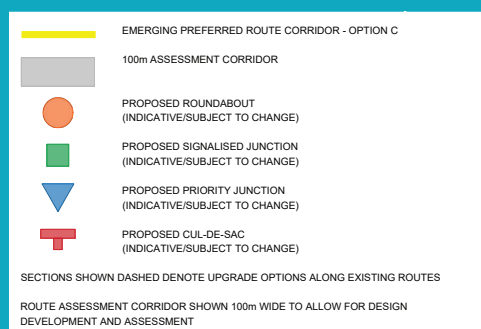
The Emerging Preferred Route shown is surrounded by an Assessment Corridor of 100m width. The 100m corridor does not represent the actual width of the road scheme or the lands to be acquired – the corridor indicates the lands within which a road scheme could feasibly be developed.

It should be noted that the boundary of a route corridor may be subject to change as the project develops to address any new or previously unidentified constraints emerging during the design process.



An Interactive map of the Emerging Preferred Route Corridor is available to view at:

<https://consult.kildarecoco.ie/en/consultation/celbridge-hazelhatch-link-road-public-consultation-emerging-preferred-route>



Have Your Say

The project team would like to hear your views on the Emerging Preferred Route Corridor to inform the design of the project.

We welcome your feedback on any issues or information, relating to the Emerging Preferred Route Corridor, which you think should be considered in the identification of the Final Preferred Route.

All project information, including an interactive map of the Emerging Preferred Route Corridor and the consultation questionnaire (also enclosed), is available to view and submit online.

In-person consultation days are arranged for **Thursday 7th April** and **Friday 8th April 2022** at Celbridge Community Centre from 12 noon until 8.30pm on both dates, where interested parties will have an opportunity to discuss the scheme with the Project Team.

Submitting Feedback

Online: <https://consult.kildarecoco.ie/en/consultation/celbridge-hazelhatch-link-road-public-consultation-emerging-preferred-route>

Email: CHLR@kildarecoco.ie

Post: Proposed Celbridge to Hazelhatch Link Road, A/Senior Executive Officer, Roads, Transportation and Public Safety Department, Kildare County Council, Áras Chill Dara, Devoy Park, Naas, Co. Kildare, W91 X77F.

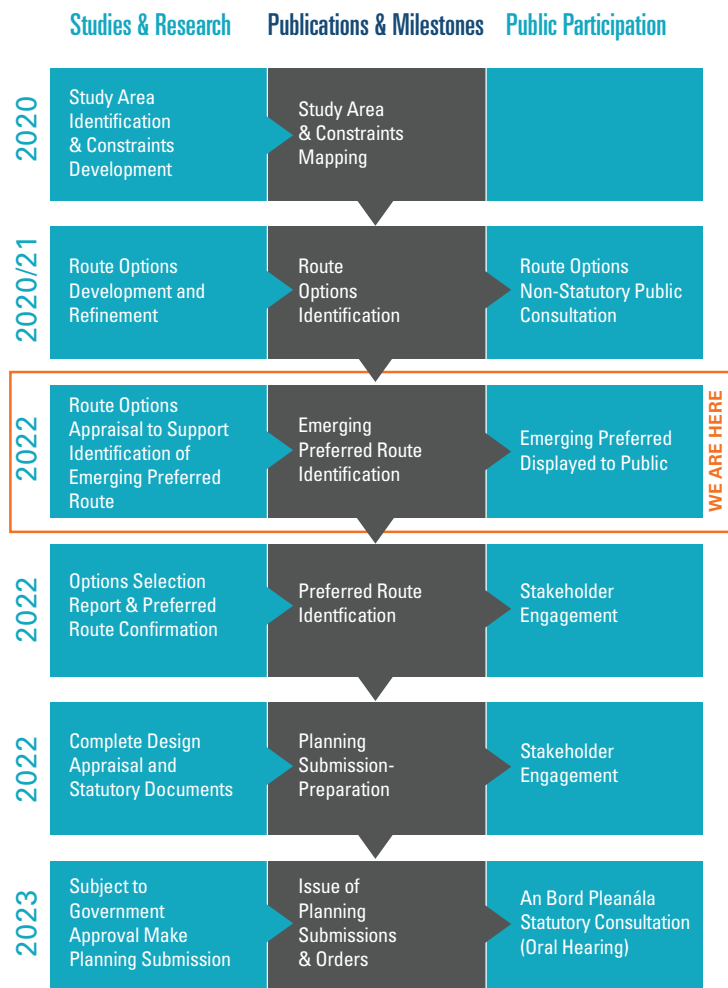
All feedback should be returned by **5pm on Friday 6th May 2022.**

Next Steps

Feedback and submissions received through this 2nd non-statutory Public Consultation will be considered by the Project Team before a Preferred Route Corridor ('Preferred Option') is finalised. The Phase 2 Option Selection process will then be completed and the 'Option Selection Report' finalised along with the 'Preferred Option'. The 'Preferred Option' will be put on Public Display to inform all stakeholders and the public. As indicated on the Public Consultation roadmap below this is expected to take place in mid-2022.

After a Preferred Option is finalised the next Phase of the planning and design process can commence, which will include identifying the land take required, junction and access design and the completion of the Environmental Impact Assessment Process. During this phase, further engagement with landowners and interested parties will be undertaken as part of the ongoing process.

Project Timelines



Contact Us

Online: <https://consult.kildarecoco.ie/en/consultation/celbridge-hazelhatch-link-road-public-consultation-emerging-preferred-route>



**CELBRIDGE TO
HAZELHATCH
LINK ROAD**