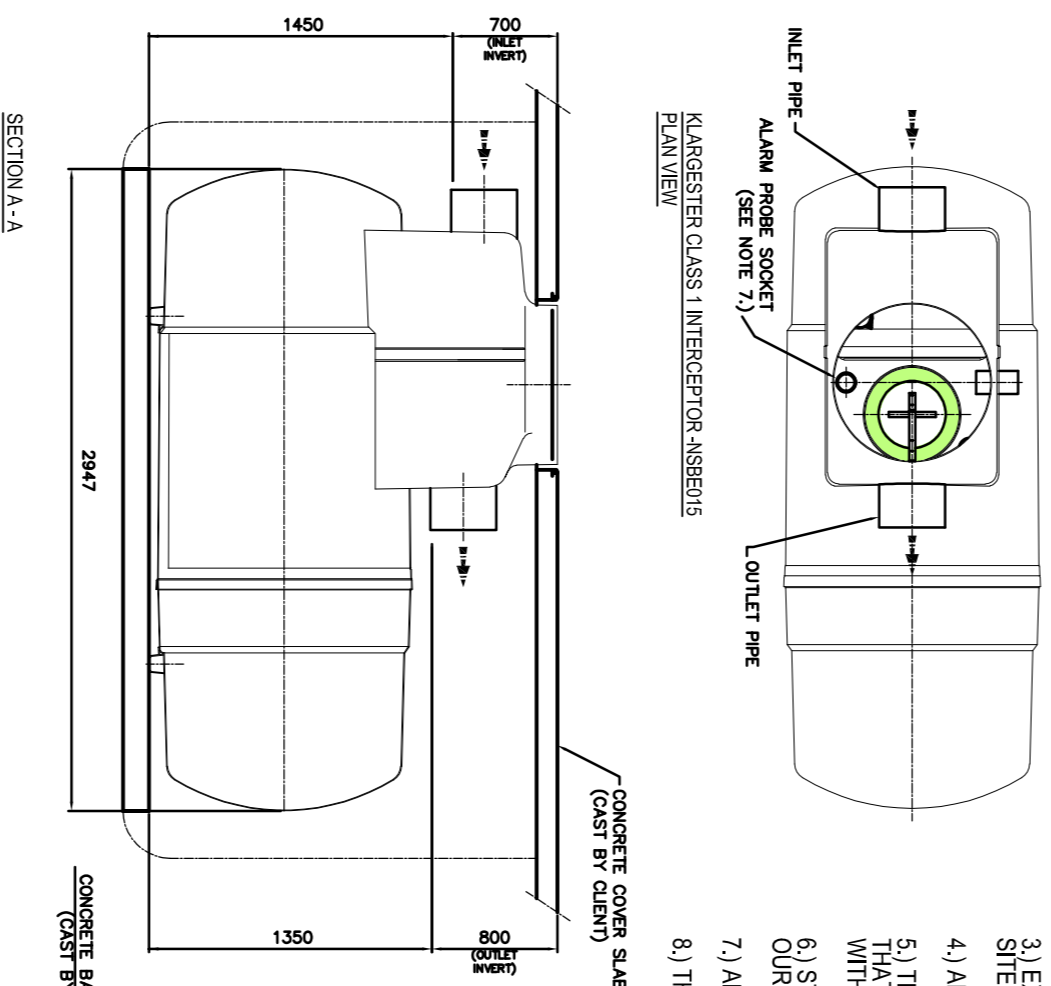
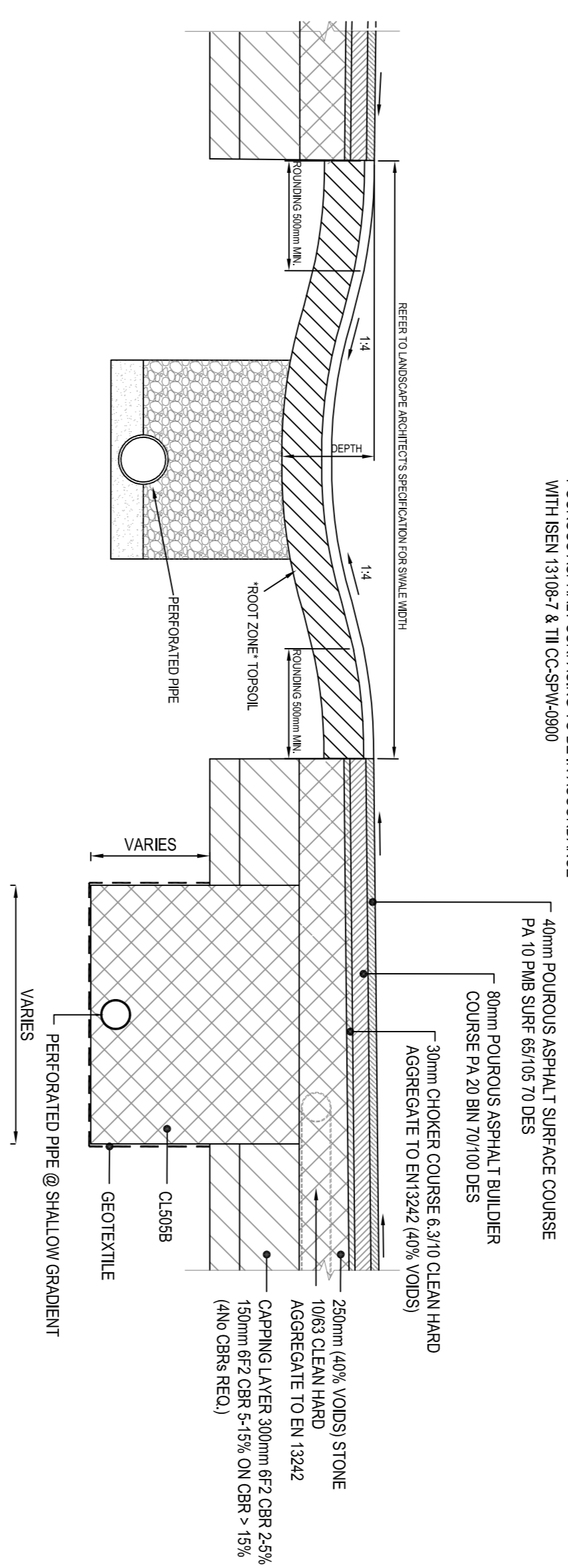


HIGH LEVEL OVERTFLOW FOR STORMS IN EXCESS OF 1 IN 30 RETURN PERIOD (20% CLIMATE CHANGE)

NOTE!
POURIOUS ASPHALT SURFACING TO BE IN ACCORDANCE WITH ISEN 13108-7 & TIL CC-SPW-4900

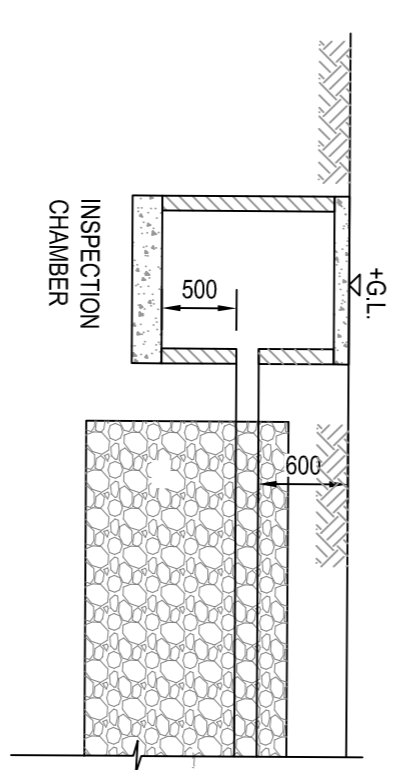


- NOTES:**
- 1.) INLET / OUTLET PIPES ARE PLAN P.O.C.
 - 2.) PLEASE NOTE A CLASS 1 BYPASS SEPARATOR INCLUDES A COALESCEER CLASS 2 BYPASS SEPARATORS DO NOT.
 - 3.) EXTENSION NECKS FOR DEEPER INVERT CAN BE PROVIDED IN 0.5m INCREMENTS FOR ON SITE ASSEMBLY. PLEASE ASK OUR SALES DEPARTMENT FOR FURTHER DETAILS.
 - 4.) ALL UNITS REQUIRE APPROPRIATE COVER AND FRAME TO SUIT APPLIED LOADINGS.
 - 5.) THIS DRAWING SHOULD BE USED FOR DIMENSIONAL INFORMATION ONLY. IT IS ESSENTIAL THAT THIS DRAWING IS READ IN CONJUNCTION WITH THE INSTALLATION GUIDELINES SUPPLIED WITH THE UNIT (OTHERS ARE AVAILABLE FROM OUR SALES DEPARTMENT).
 - 6.) STANDARD PIPE ORIENTATION SHOWN. FOR OTHER AVAILABLE OPTIONS PLEASE CONTACT OUR SALES DEPARTMENT.
 - 7.) AN Ø82mm SOCKET IS SUPPLIED TO HOUSE AN OIL ALARM PROBE.
 - 8.) THIS DRAWING IS ALSO AVAILABLE ON OUR WEBSITE www.klargester.com

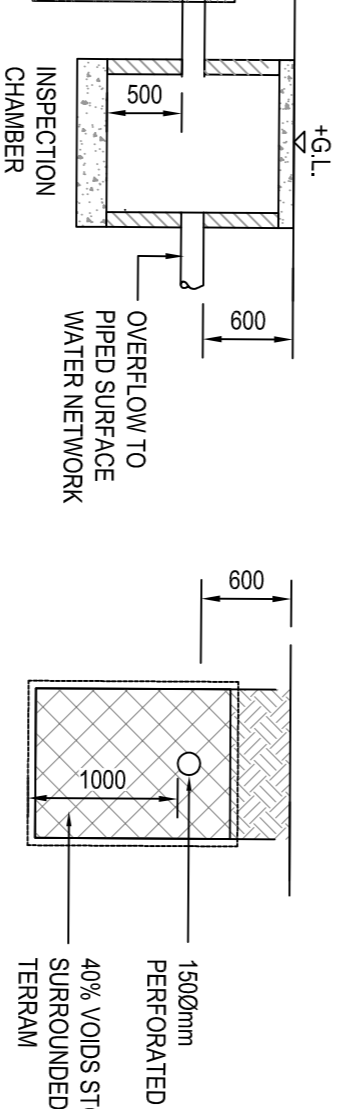
| REF. NO. | FLOW RATE (l/s) | DRAINAGE AREA CAPACITY (LITRES) | SOIL STORAGE CAPACITY (LITRES) | LENGTH (L) (mm) | HEIGHT (H) (mm) | MANHOLE COVER (Ø) (mm) | BASE TO INLET (A) (mm) | BASE TO OUTLET (B) (mm) | MIN. INLET INVERT (E) (mm) | STANDARD PRESSURE DIA. (C) (mm) | STANDARD P.A. ADDRESS (mm) | |
|----------|-----------------|---------------------------------|--------------------------------|-----------------|-----------------|------------------------|------------------------|-------------------------|----------------------------|---------------------------------|----------------------------|-----|
| NSB015 | 15 | 6335 | 1600 | 225 | 2947 | 1220 | 750 | 1450 | 1530 | 700 | 315 | 100 |

TYPICAL SIZE OF KLARGESTER CLASS 1 INTERCEPTOR

(Subject to minimum unit dimensions & covered provided at detailed design stage).



TYPICAL ELEVATION OF INFILTRATION TRENCH



TYPICAL INFILTRATION TRENCH DETAIL

PROPOSED PETROL INTERCEPTOR

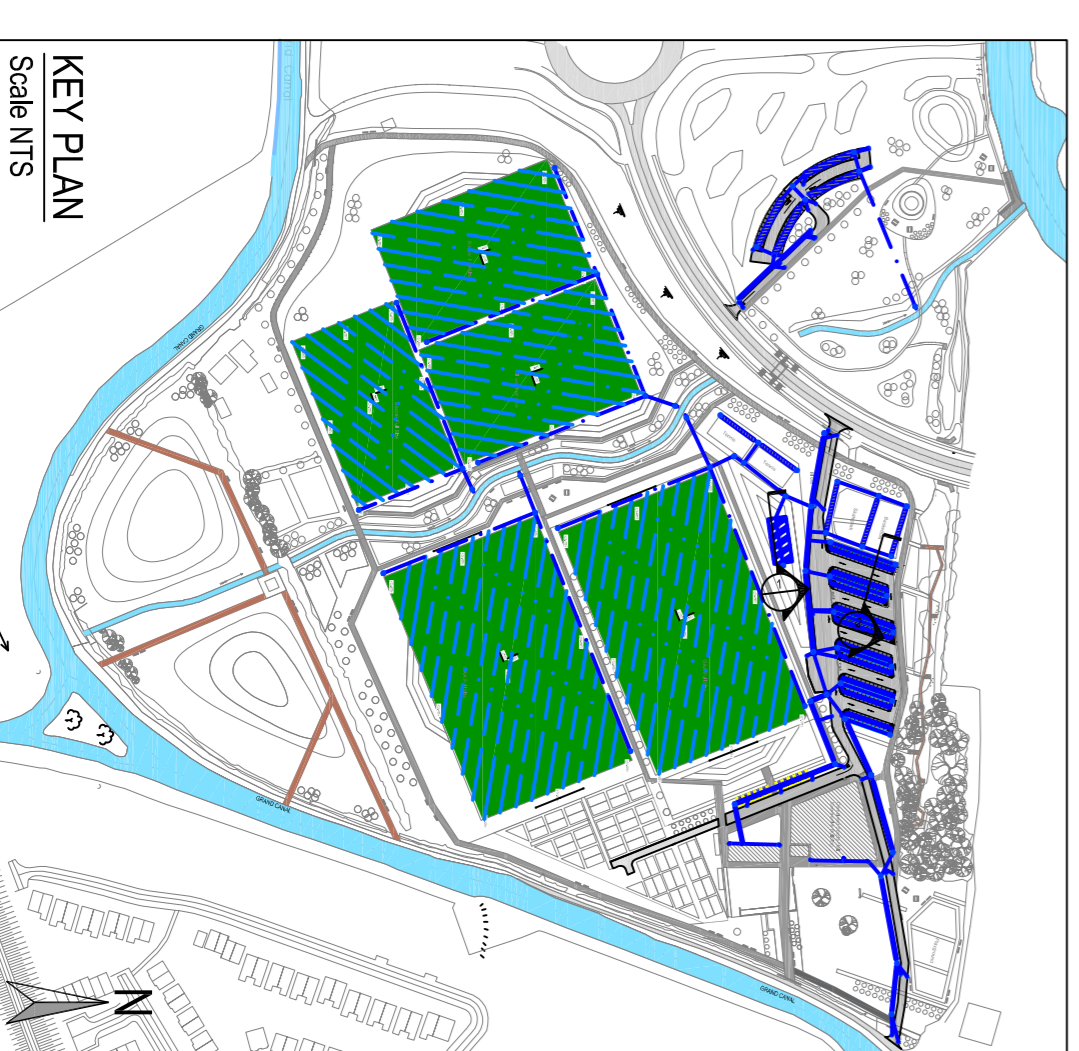
SCALE 1:25

SURVEY NOTES

- TOPOGRAPHICAL SURVEY BASED ON EXISTING LEVELS FROM 3rd PARTY SPECIALIST. DOB & ASSOCIATES TAKES NO RESPONSIBILITY FOR ACCURACY OF SURVEY INFORMATION.
- MAIN CONTRACTOR TO ESTABLISH INDEPENDENTLY ORDNANCE DATUM ON SITE FOR LEVELS TO MAIN HEAD AND MAIN DOD.
- MAIN CONTRACTOR TO ESTABLISH INDEPENDENTLY MAIN DOD.
- MAIN CONTRACTOR TO ESTABLISH INDEPENDENTLY MAIN DOD.
- MAIN CONTRACTOR TO ESTABLISH INDEPENDENTLY MAIN DOD.

GENERAL NOTES:

1. REFER TO ARCHITECT'S DRAWINGS FOR ALL SITE & APPLICATION BOUNDARIES
2. THIS DRAWING IS TO BE READ IN CONJUNCTION WITH ALL OTHER RELEVANT ENGINEERS DRAWINGS AND SPECIFICATIONS
3. USE FIGURED DIMENSIONS ONLY. DO NOT SCALE
4. FOR ALL FLOOR LEVELS, ROAD LEVELS & ALL EXTERNAL DRAWINGS REFER TO ARCHITECT'S DRAWINGS
5. REFER TO SURVEY DRAWINGS FOR EXISTING SERVICES LAYOUTS AND MANHOLE INFORMATION



ISSUED FOR INFORMATION

| Rev. | Note | Date | Drawn | Check |
|--------|------------------------|------------|-------|-------|
| S1.P03 | ISSUED FOR INFORMATION | 14.10.2021 | JM | AL |
| S1.P02 | ISSUED FOR INFORMATION | 22.08.2021 | JM | AL |
| S1.P01 | ISSUED FOR INFORMATION | 16.06.2021 | JM | AL |

DONNACHADH O'BRIEN & ASSOCIATES CONSULTING ENGINEERS
MILLERSNUGH PARK
NAAS
CO. KILDARE

UNIT 5C
ELM HOUSE
MILLERSNUGH PARK
NAAS
WWW.DOBBERENGINEERS.IE
PHONE: +353 45 984 012

Client: **KILDARE COUNTY COUNCIL**

Project: **SALLINS PARK**

Drawing Title: **PROPOSED ATTENUATION DETAILS**

| Drawn By: | Checked By: | Approved By: | Date: | Scale: | Sheet Size: |
|-----------|-------------|--------------|--------|----------|-------------|
| JK | AL | DOB | MAY 21 | AS SHOWN | A1 |

| Project Number: | Drawing Number: | Status Code: | Rev Number: |
|-----------------|------------------------------|--------------|-------------|
| DOBA2018 | SALLPARK-DOB-00-SH-DR-C-0110 | S1 | P03 |