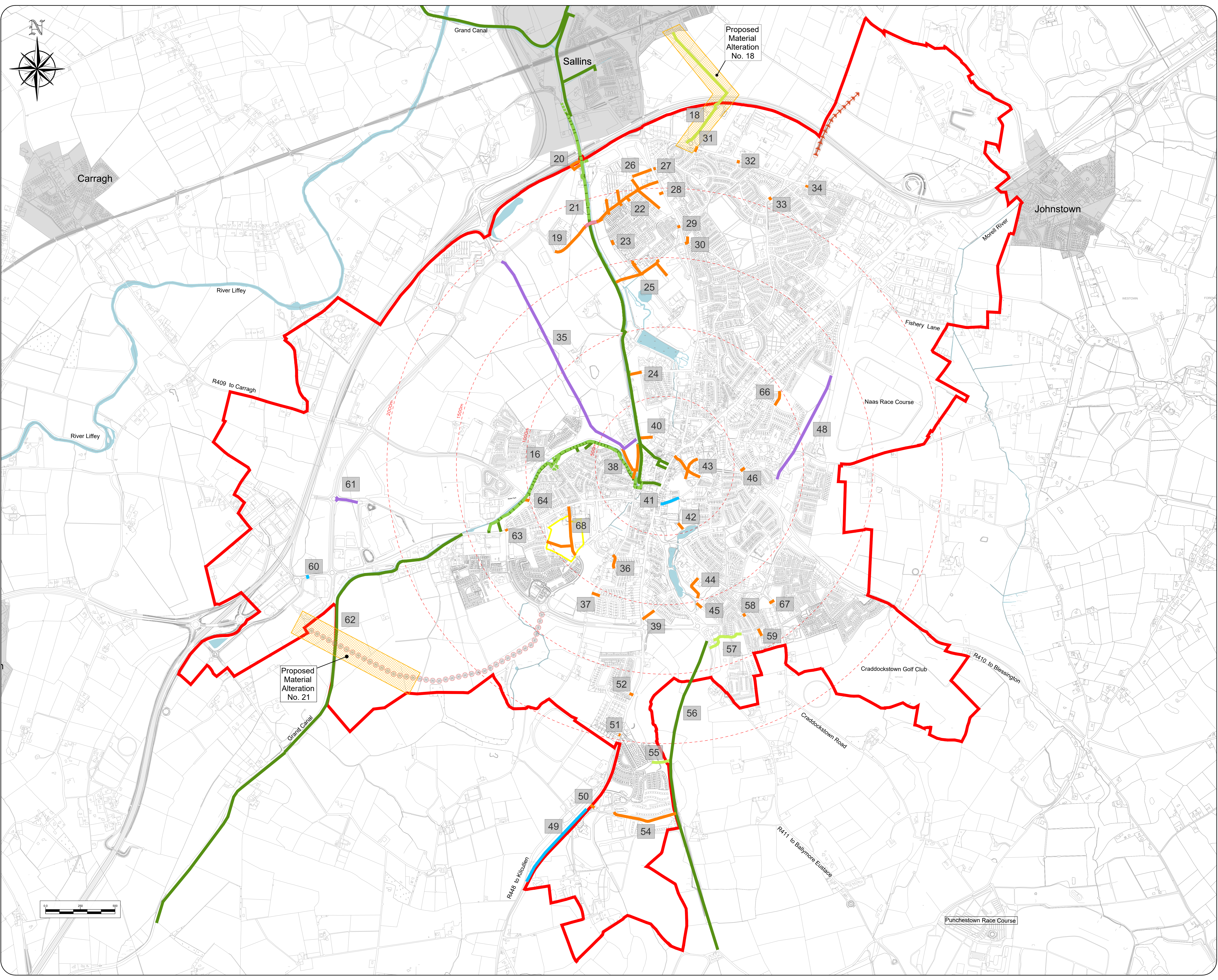


- Legend :
- Local Area Plan Boundary
 - Key Development Areas
 - New Pedestrian / Cyclist Path
 - Indicative Future Path Connection
 - New Footpaths on Road
 - Planned Road with Footpaths
 - Planned Greenway
 - Possible Future Route:- Jigginstown (Indicative only)
 - Possible Future Route:- Kerdiffstown Park (Indicative only)
 - New Pedestrian / Cyclist Bridge
 - River/Canal/Lakes
 - Distance from Town Centre (at 500m intervals)



Proposed Material Alteration No. 21

Proposed Material Alteration No. 18

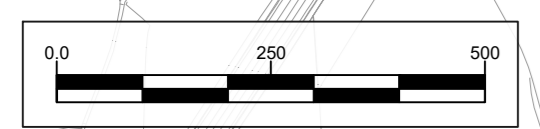
Stage	Date	Description
Material Alterations	07/07/2021	Report on Material Alterations and Motions received
Draft	09/03/2021	Draft Plan

Movement & Transport Pedestrian Measures Material Alterations

Scale: N.T.S.	Map Ref.: 5.1
Date: July 2021	Drawing No.: 200/21/1112

Drawn by: M O'Loughlin	Checked by: L Crawford	Approved by: N Curran
Date: 07/07/2021	Date: 07/07/2021	Date: 07/07/2021

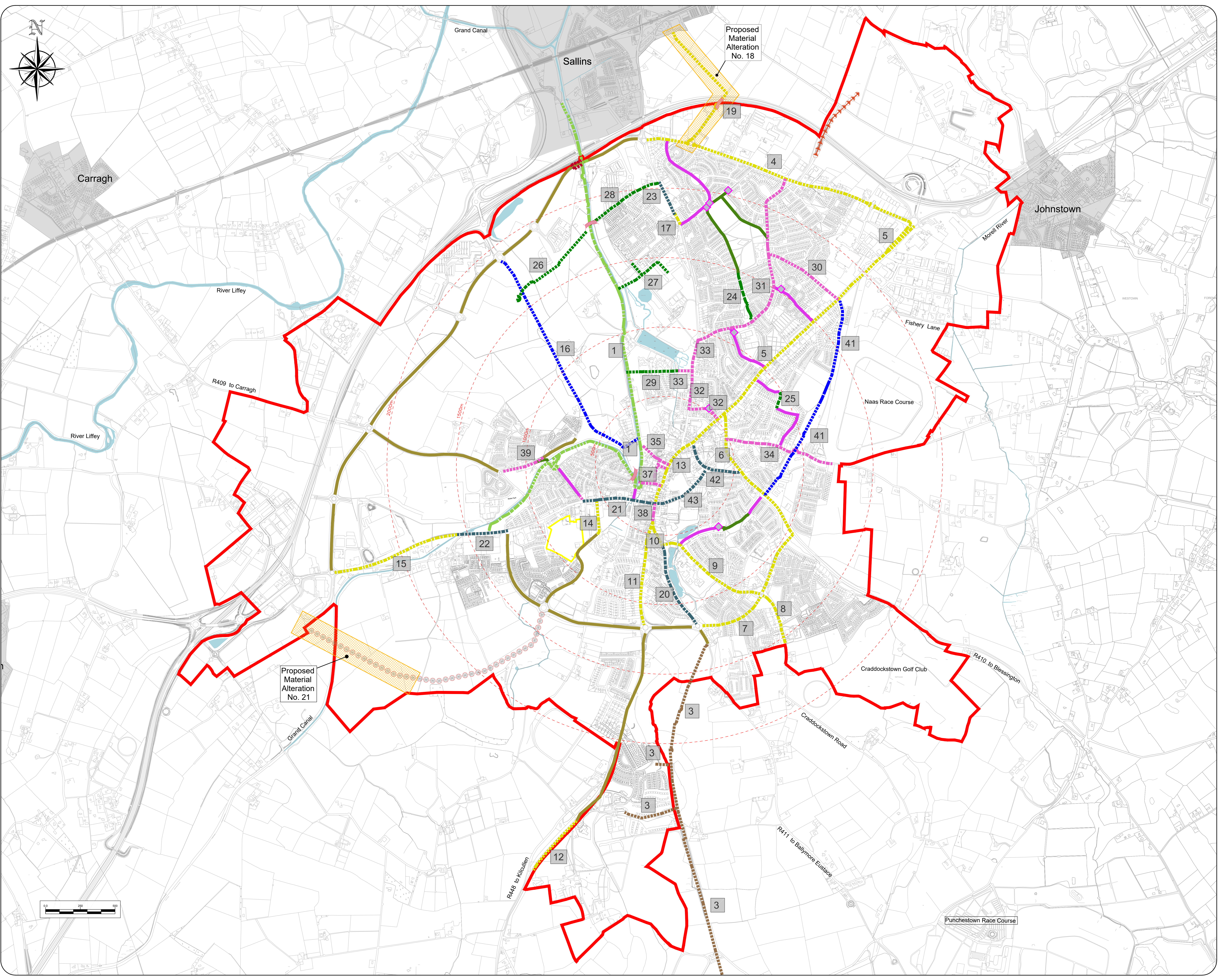
This drawing is to be read in conjunction with the written statement





Legend :

- Local Area Plan Boundary
- Key Development Areas
- Shared Cycle & Pedestrian Connection (Sallin Bypass)
- Naas To Sallins Greenway
- Proposed Minor Greenway
- Proposed Cycle Track / Cycle Lane
- Proposed Shared Street Improvement
- Proposed Link (type to be determined by detailed study)
- Proposed Cycle Track (in conjunction with road scheme)
- Proposed Baltinglass / Tullow (and links)
- Possible Future Route- Jigginstown (Indicative only)
- Possible Future Route- Kerdiffstown Park (Indicative only)
- Proposed Bridge Accessible to Cycles
- Proposed Minor Cycling Permeability Improvement
- Existing: Minor Greenway
- Existing: Cycle Track / Cycle Lane
- Existing: Shared Street
- River/Canal/Lakes
- Distance from Town Centre (at 500m intervals)



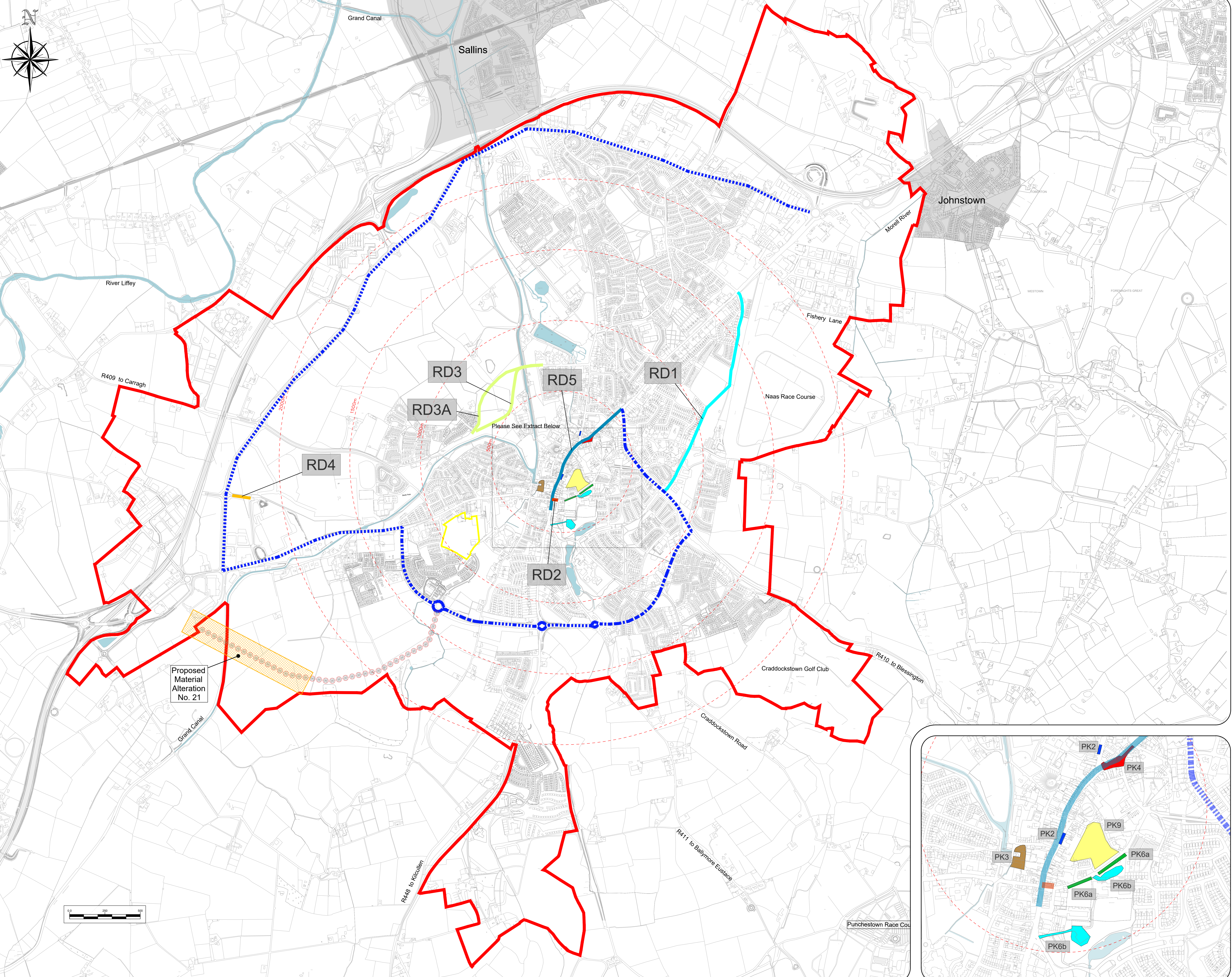
Stage	Date	Description
Material Alterations	07/07/2021	Report on Material Alterations and Motions received
Draft	09/03/2021	Draft Plan

**Movement & Transport
 Cycling Measures
 Material Alterations**

Scale: N.T.S.	Map Ref.: 5.2
Date: July 2021	Drawing No.: 200/21/1112

Drawn by: M O'Loughlin	Checked by: L Crawford	Approved by: N Curran
Date: 07/07/2021	Date: 07/07/2021	Date: 07/07/2021

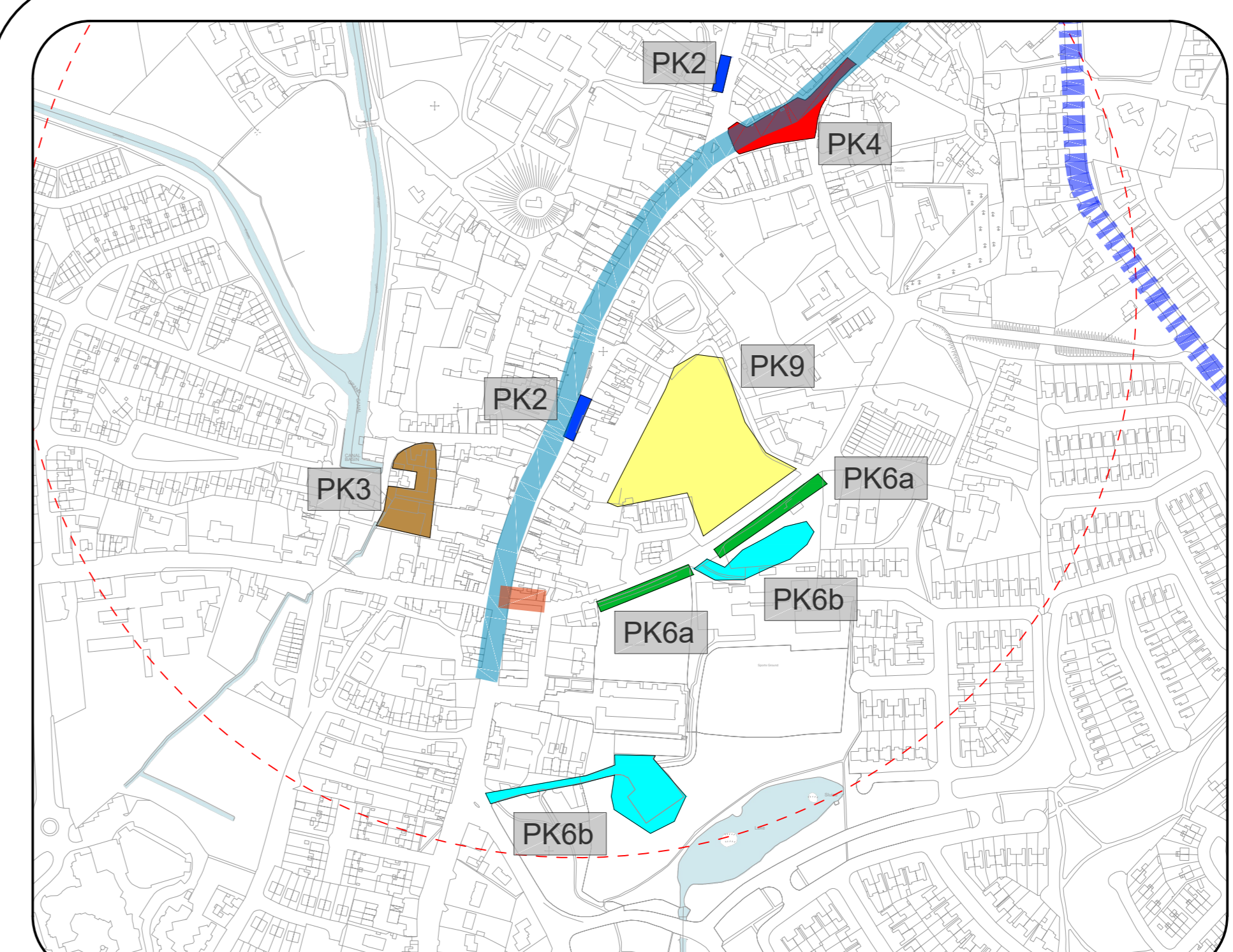
This drawing is to be read in conjunction with the written statement



- Legend :**
- Local Area Plan Boundary
 - Key Development Areas

- Road Options**
- RD1 The Gallops Avenue
 - RD2 Upgrade of Murtaghs Corner Junction
 - RD3&3A Milbridge Street (Indicative Route)
 - RD4 Roadway Linking Aldi Distribution Centre to Millennium Park Road
 - RD5 HGV Restrictions in Town Centre
 - RD5 Alternative Route For HGVs
 - Possible Future Route- Jigginstown (Indicative only)
 - Possible Future Route- Bridge Accessible to Cycles / Pedestrians

- Parking Options**
- PK2 - Relocate Perpendicular Parking
 - PK3 - Additional Town Centre Car Park
 - PK4 - Poplar Square Plaza
 - PK6a - Relocate Parking
 - PK6b - New School Drop Off Area (one of the two sites indicated - TBC)
 - PK9 - Naas Shopping Centre Car Park
 - River/Canal/Lakes
 - Distance from Town Centre (at 500m intervals)



Stage	Date	Description
Material Alterations	07/07/2021	Report on Material Alterations and Motions received
Draft	09/03/2021	Draft Plan

**Movement & Transport
 Road Measures
 Material Alterations**

Scale: N.T.S.	Map Ref.: 5.4
Date: July 2021	Drawing No.: 2002/1112

Drawn by: M O'Loughlin	Checked by: L Crawford	Approved by: N Curran
Date: 07/07/2021	Date: 07/07/2021	Date: 07/07/2021

This drawing is to be read in conjunction with the written statement