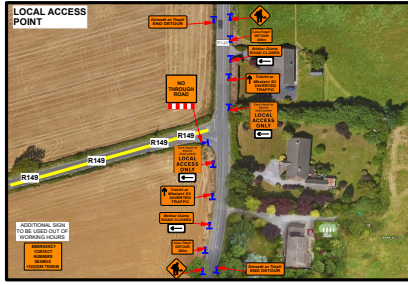
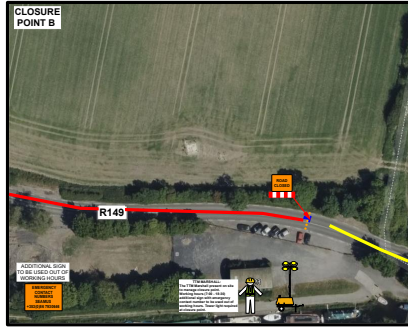
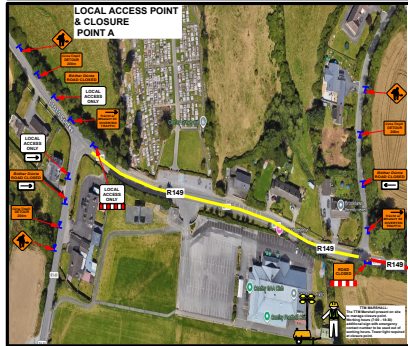


**Rd Closure 5 R149**  
**Distance: 550m**  
**Travel time: 1 min**  
**Diversion distance: 5.7km**  
**Travel time: 10 min (extra 9min)**  
**Diversion via: R149, R148, R157, L1015, R835**



DESIGN PARAMETERS		
ROAD / WORKS CHARACTERISTICS		
Road Level	Roadworks Type	Speed Limit
1(iv)	A	60
Single or Multi-Lane / Dual	Sign Size	
Single	600mm	
TEMPORARY SIGNS		
Sign Visibility	Number of Signs	Sign Spacing
60m	3	20m
MIN. RATE OF TAPER		
Taper at Lane	Taper At Hard Shoulder	Transition Length
45 Deg.	45 Deg.	N/A
SAFETY ZONES & LANE WIDTH		
Longitudinal Safety Zone	Lateral Safety Zone	Minimum Lane Width
15m	0.5m	3m
CONE SIZE & SPACING		
Minimum Cone Height	Spacing at Tapers	Longitudinal Spacing
750mm	3m	6m
LAMP SPACING		
Lamp Spacing at Tapers	Longitudinal Lamp Spacing	
6m	12m	

LEGEND	
	Sign Location
	Road Cones
	Works Area
	Longitudinal Safety Zone
	Lateral Safety Zone
	Diversion Route
	Road Closure
	Local Access

PROJECT INFORMATION	
Client:	<b>Irish Water   Uisce Éireann</b>
Project:	J1604 - Maynooth Transfer Pipeline
Title:	Road Closure 5 - R149
Dwg No:	TM001
Date:	06/05/2026
Drawn:	M.Kirwan
Checked:	R.Aston
Approved:	S.Connelly
Scale:	1:250
Attny. Co. Walwy. Tel: 00353 (91) 844356 Fax: 00353 (91) 844619 www.coffeygroup.com	

- GENERAL NOTES:**
- All works to be carried out in accordance with the latest revisions of Chapter 8 of the Traffic Signs Manual and the Temporary Traffic Management Operations Guidance.
  - The Temporary traffic management plan may only be implemented by a qualified Temporary Traffic Operations Supervisor (TTOS). The TTOS is to be in possession of the relevant CSCS signing lighting and guarding at road works card.
  - TTOS shall be available at all times when traffic management is in operation. Designated personnel to hold Health and Safety at Road Works CSCS card if applicable.
  - Inspections of the traffic management layout are to be carried out on a daily basis to ensure the TM equipment has been set out as specified in the temporary traffic management plan (TTMP) and to ensure the TTMP is operating effectively. Record check sheet to be done daily.
  - Maintenance of the traffic management equipment to be carried out on an on-going basis throughout the duration of the works.
  - Sign faces shall be of retro-reflective material and the retro-reflectivity, colours, chromaticity and luminance factors shall be as specified in the TI Publication on Specification for Roadworks Series 1200 (CC-SPW-0200) or any further amendments or replacement.
  - Designated works access locations are to be clearly signposted using sign WK 052 as required. Site Access points to be considered by the TM Designer as part of the Design process, with signage locations shown on the Drawings, referring to Chapter 8 of the Traffic Signs Manual for usage.
  - The layouts and diagrams shown in chapter 8 of the traffic signs manual are based on directing traffic through roadworks using delineators and safety zones rather than on the use of restraint systems. Safety barriers should only be used where the benefits outweigh the risks involved in their installation and use. Risk assessment to be undertaken by the relevant supervisor in relation to excavations in the vicinity of the existing roadway.
  - It is envisaged that unobstructed access shall be maintained for the emergency services for the duration of the works. Should access be required to the site / works areas then this shall be via agreed site access points.
  - Access to local residence and business properties to be maintained at all times and to be coordinated by the TTOS on site.
  - Pedestrian routes to be maintained during the works. Pedestrian routes to be coordinated by the TTOS on site and signed accordingly.
  - This TM design has been undertaken by a qualified, trained & competent designer.
  - This TM design has been undertaken in compliance with TSM Chapter 8.

DRAWING HISTORY		
Rev.	Date	Comment
00	06/05/2026	Original Issue