



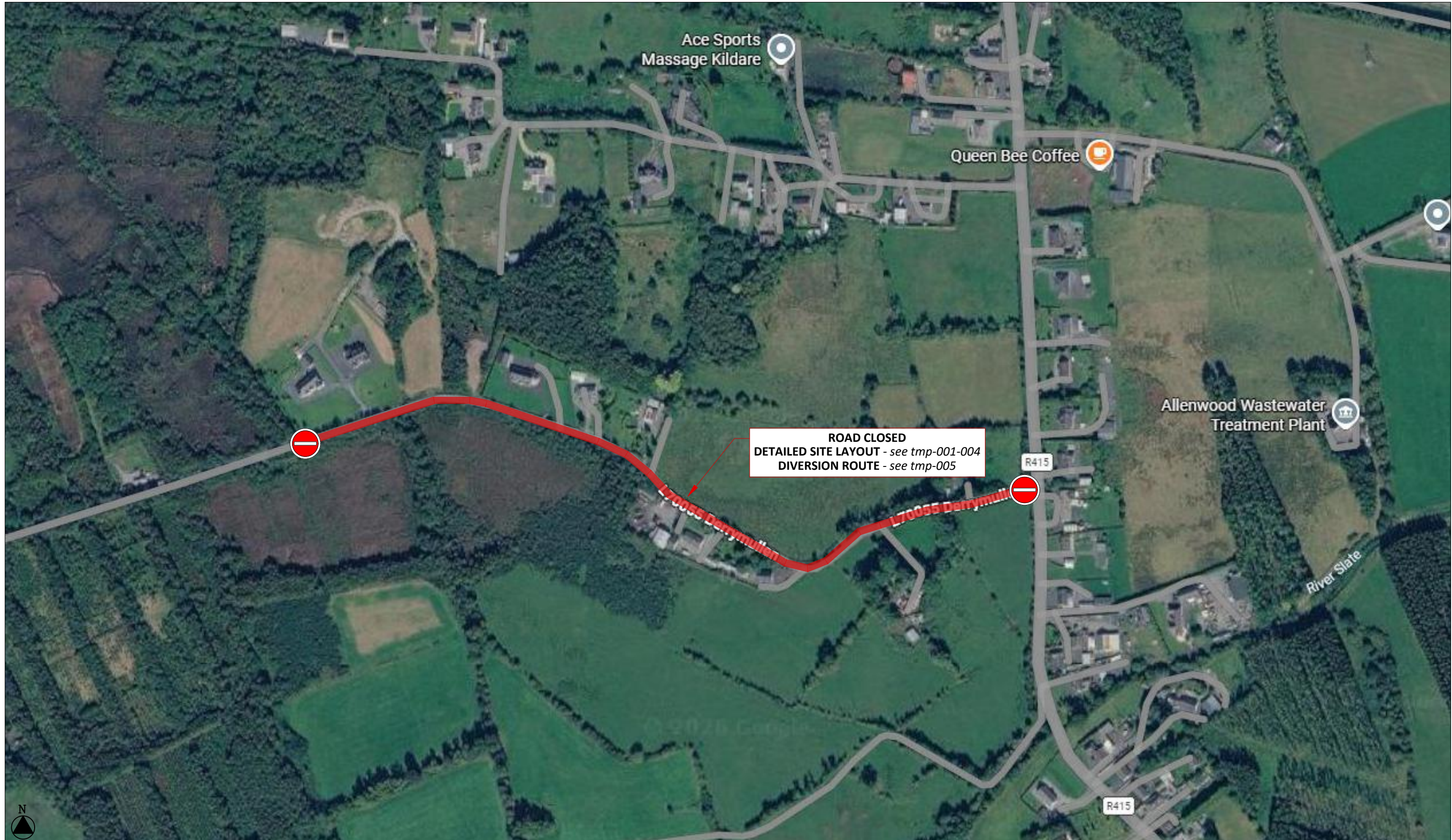
GMC Utilities Group Ltd, GMC House,  
Millenium Business Park, Cappagh Road,  
Ballycoolin, Dublin 11, Ireland.  
Tel: +353 (0)1 864 9800  
Email: info@gmcirl.com

# TEMPORARY TRAFFIC MANAGEMENT PLAN

**CONTRACT** Uisce Eireann  
**WORKS** 29485626 WNWM PRV Construction Works  
**LOCATION** L7005 Derrymullen Allenwood Kildare

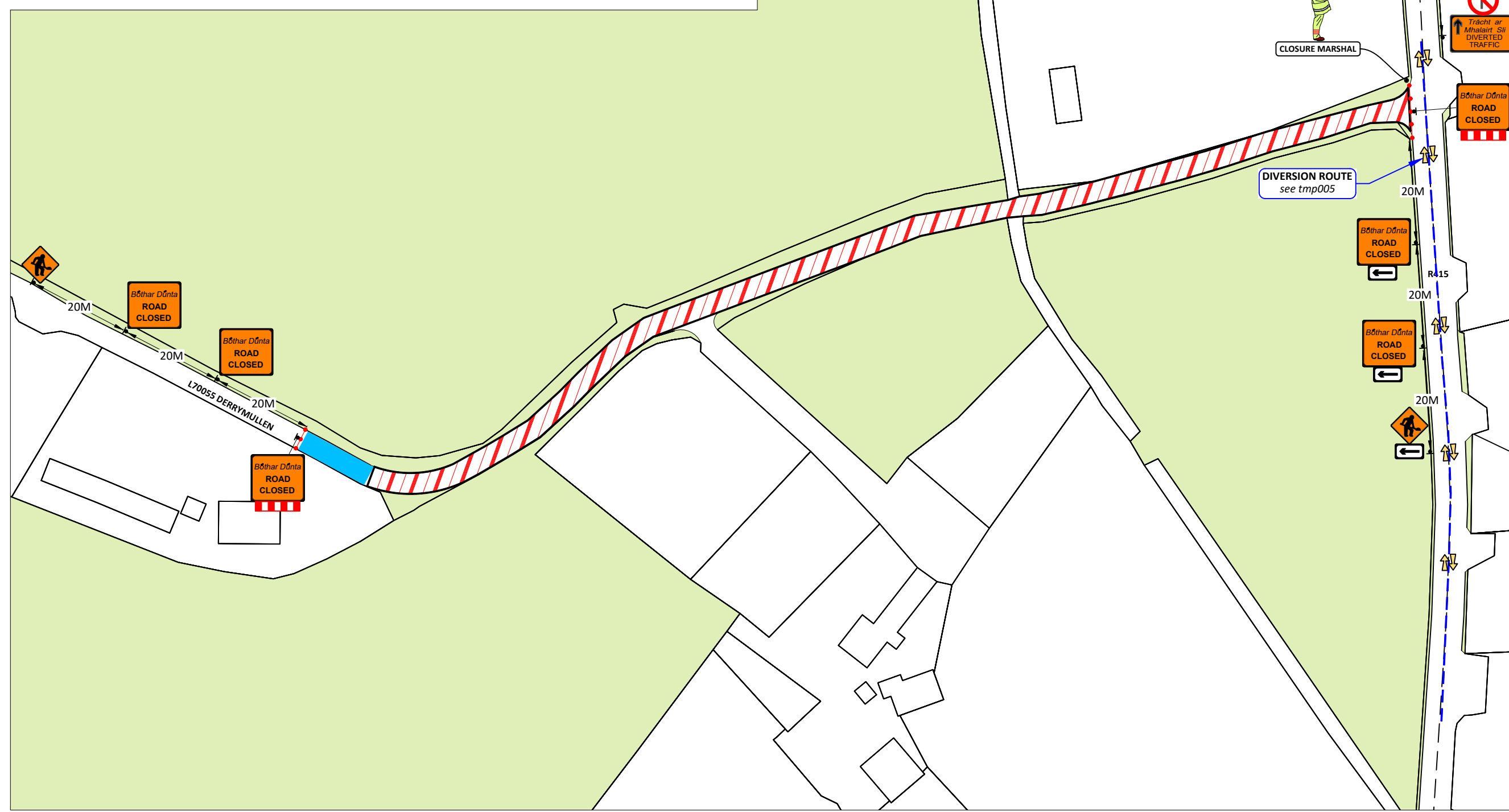


RECOMMENDED PRINT A3 | ISSUED : 12/05/2026 | REVISION - 00 | PAGES - 05 | DESIGNER - A.MUNSTER | DRAWN - A.MUNSTER | APPROVED - D.GOUGH





**IMPORTANT NOTE**  
 LOCAL RESIDENTS TO BE INFORMED OF WORKS PRIOR TO COMMENCEMENT



- SITE SPECIFIC NOTES**
- Traffic Management to comply with Temporary Traffic Management 2019 publications Chapter 8 Traffic Signs Manual, Design Guidance & Operation Guidance.
  - This traffic management plan may only be implemented by a temporary traffic operations supervisor (tos) who must carry out a site risk assessment to modify (if necessary) the measures described to suit actual site conditions before implementation.
  - Road closed, diversion route provided
  - On single carriageway roads of 60 km/h signs to be placed at 20m intervals. Additional signage may be used where deemed necessary. (Type A & B)
  - Emergency services given priority at all times.
  - TMP is based on information received at time of design, minor changes may be required on site. Major changes to site works will require revised TMP.
  - The tos to determine exact position considering the site specifics.



**LEGEND:**

- DIVERSION ROUTE
- WORK/PLANT AREA
- SAFETY AREA
- LATERAL SAFETY ZONE
- SITE BARRIER
- CONES
- SIGN LOCATION & ORIENTATION
- BARRIER BOARD

Design Parameters for Level 1 (w)  
 (Single Carriageway of 60 km/h & Multi-lane / Dual < 60km/h)

Design Parameters	Roadworks Type A (>12 Hours)
Sign Size (mm)	600 Min
Sign Visibility (m)	60
Number of Signs	3
Cumulative Distance (m)	60
Distance between advance signs (m)	20
Minimum Rate of Taper	
Taper at Lane (m) <sup>2</sup>	1 in 10
Taper at Hard Shoulder (m) <sup>2</sup>	1 in 10
Transition Length (m)	2 x Taper Length
Maximum Cone Spacing	
Cone Height (mm)	750
At Taper (m) <sup>2</sup>	3
Longitudinal (m) <sup>2</sup>	6
Maximum Lamp Spacing	
At Taper (m)	6
Longitudinal (m)	12
Safety Zone	
Longitudinal (m)	15
Lateral (m)	0.5
Lanes	
Minimum Lane Width (m)	3 (2.5)
Two-way Roadway Width (m)	5

Note:  
 A. 45 degree taper is required at active temporary traffic controlled layouts with cones at 1m centres.  
 B. Cone spacing shown is the maximum permitted. Where geometry or any other site specific reason dictates the spacing shall be reduced accordingly.  
 C. The optimum lane width for all classes of vehicles is 3.3m. This may be reduced to a minimum of 3.0m. Below this, HGVs and buses must be marshalled past the works. The absolute minimum lane width, if only cars and light vehicles are present, is 2.5m. Refer to Chapter 8, Paragraphs 8.4.3.1 to 8.4.3.3.



**GMC Utilities Group Ltd**, GMC House, Millenium Business Park, Cappagh Road, Ballycoolin, Dublin 11, Ireland.  
 Tel: +353 (0)1 864 9800  
 Email: info@gmcirl.com

<b>Project ;</b>	29485626 WNM PRV Construction Works	
<b>Location ;</b>	L7005 Derrymullen Allenwood Kildare	
<b>TM Method ;</b>	Road Closure Site Layout	
<b>Designer ; AM</b>	<b>Drawn ; AM</b>	<b>Approved ; DG</b>
<b>Date ;</b>	12/05/2026	
<b>Scale ;</b>	NTS - USE FIGURED DIMENSIONS ONLY	
<b>TMP Guide Reference ;</b>	<b>TMP-001</b>	
<b>Dwg Number ;</b>	<b>GMC-TMP-26938-REV00</b>	

**SITE LOCATION MAP - L7005 Derrymullen Allenwood Kildare**



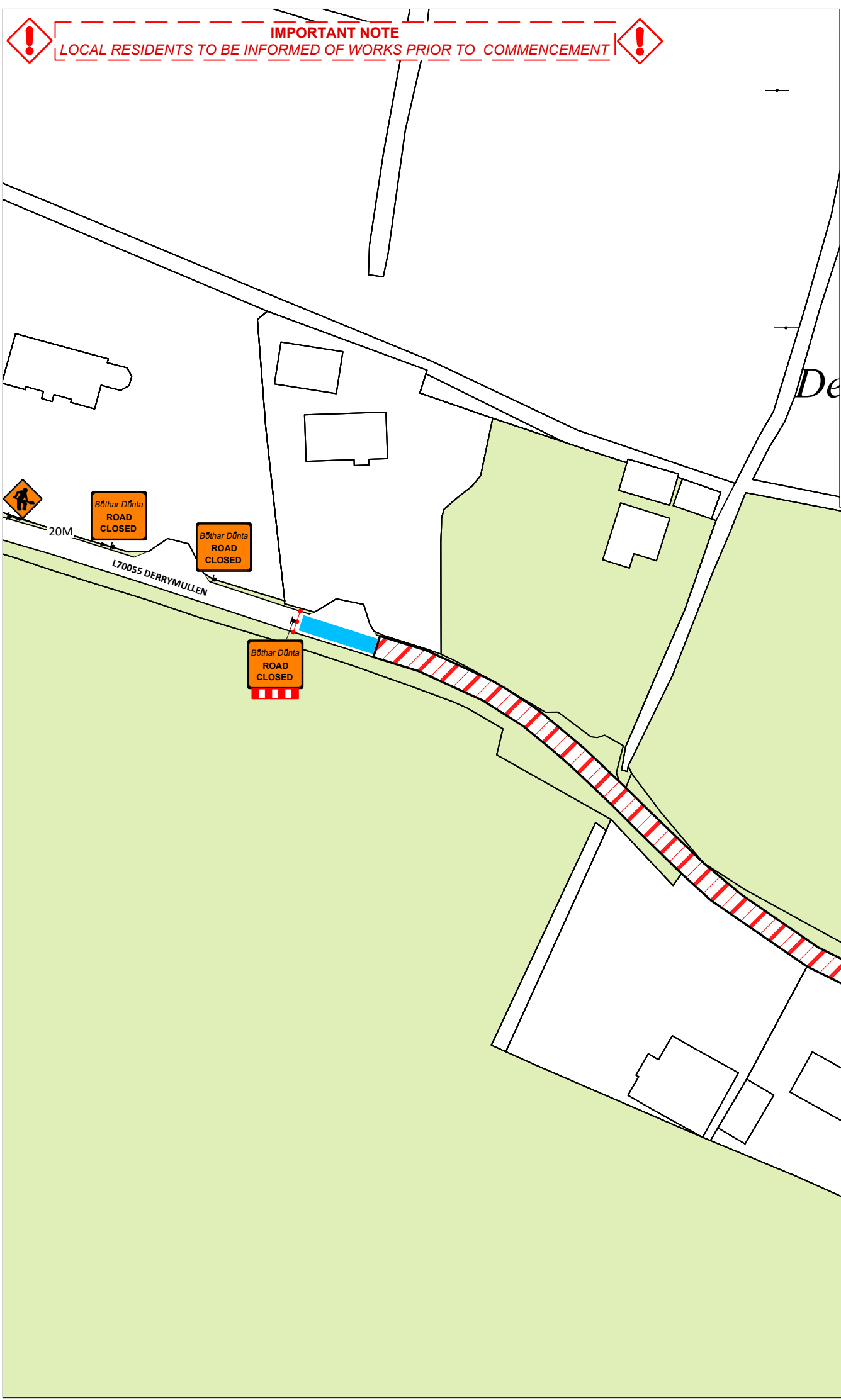
**SITE SPECIFIC NOTES**

1. Traffic Management to comply with Temporary Traffic Management 2019 publications Chapter 8 Traffic Signs Manual, Design Guidance & Operation Guidance.
2. This traffic management plan may only be implemented by a temporary traffic operations supervisor (tos) who must carry out a site risk assessment to modify (if necessary) the measures described to suit actual site conditions before implementation.
3. Road closed, diversion route provided
4. On single carriageway roads of 60 km/h signs to be placed at 20m intervals. Additional signage may be used where deemed necessary. (Type A & B)
5. Emergency services given priority at all times.
6. TMP is based on information received at time of design, minor changes may be required on site. Major changes to site works will require revised TMP.
7. The tos to determine exact position considering the site specifics.

- Site Access/Egress
- Uneven Surface
- Slippery Surface
- Overhead Cables
- During darkness at unlit areas following a site risk assessment additional lighting to be installed

- LEGEND:**
- WORK/PLANT AREA
  - SAFETY AREA
  - LATERAL SAFETY ZONE
  - SITE BARRIER
  - CONES
  - SIGN LOCATION & ORIENTATION
  - BARRIER BOARD

**IMPORTANT NOTE**  
LOCAL RESIDENTS TO BE INFORMED OF WORKS PRIOR TO COMMENCEMENT



Design Parameters for Level 1 (w)  
(Single Carriageway of 60 km/h & Multi-lane / Dual < 60km/h)

Design Parameters	Roadworks Type A (>12 Hours)
Sign Size (mm)	600 Min
Sign Visibility (m)	60
Number of Signs	3
Cumulative Distance (m)	60
Distance between advance signs (m)	20
Minimum Rate of Taper	
Taper at Lane (m) <sup>2</sup>	1 in 10
Taper at Hard Shoulder (m) <sup>2</sup>	1 in 10
Transition Length (m)	2 x Taper Length
Maximum Cone Spacing	
Cone Height (mm)	750
At Taper (m) <sup>2</sup>	3
Longitudinal (m) <sup>2</sup>	6
Maximum Lamp Spacing	
At Taper (m)	6
Longitudinal (m)	12
Safety Zone	
Longitudinal (m)	15
Lateral (m)	0.5
Lanes	
Minimum Lane Width (m)	3 (2.5)
Two-way Roadway Width (m)	5

Note:  
 A. 45 degree taper is required at active temporary traffic controlled layouts with cones at 1m centres.  
 B. Cone spacing shown is the maximum permitted. Where geometry or any other site specific reason dictates the spacing shall be reduced accordingly.  
 C. The optimum lane width for all classes of vehicles is 3.3m. This may be reduced to a minimum of 3.0m. Below this, HGVs and buses must be marshalled past the works. The absolute minimum lane width, if only cars and light vehicles are present, is 2.5m. Refer to Chapter 8, Paragraphs 8.4.3.1 to 8.4.3.3.



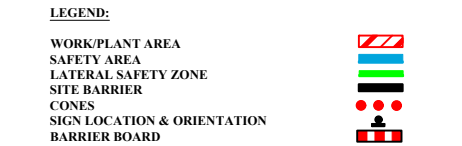
**GMC Utilities Group Ltd**, GMC House, Millenium Business Park, Cappagh Road, Ballycoolin, Dublin 11, Ireland.  
 Tel: +353 (0)1 864 9800  
 Email: info@gmcirl.com

<b>Project ;</b>	29485626 WNM PRV Construction Works	
<b>Location ;</b>	L7005 Derrymullen Allenwood Kildare	
<b>TM Method ;</b>	Road Closure Site Layout	
<b>Designer ; AM</b>	<b>Drawn ; AM</b>	<b>Approved ; DG</b>
<b>Date ;</b>	12/05/2026	
<b>Scale ;</b>	NTS - USE FIGURED DIMENSIONS ONLY	
<b>TMP Guide Reference ;</b>	<b>TMP-002</b>	
<b>Dwg Number ;</b>	<b>GMC-TMP-26939-REV00</b>	

**SITE LOCATION MAP - L7005 Derrymullen Allenwood Kildare**



- SITE SPECIFIC NOTES**
1. Traffic Management to comply with Temporary Traffic Management 2019 publications Chapter 8 Traffic Signs Manual, Design Guidance & Operation Guidance.
  2. This traffic management plan may only be implemented by a temporary traffic operations supervisor (tos) who must carry out a site risk assessment to modify (if necessary) the measures described to suit actual site conditions before implementation.
  3. Road closed, diversion route provided
  4. On single carriageway roads of 60 km/h signs to be placed at 20m intervals. Additional signage may be used where deemed necessary. (Type A & B)
  5. Emergency services given priority at all times.
  6. TMP is based on information received at time of design, minor changes may be required on site. Major changes to site works will require revised TMP.
  7. The tos to determine exact position considering the site specifics.



Design Parameters for Level 1 (w)  
(Single Carriageway of 60 km/h & Multi-lane / Dual < 60km/h)

Design Parameters	Roadworks Type A (>12 Hours)
Sign Size (mm)	600 Min
Sign Visibility (m)	60
Number of Signs	3
Cumulative Distance (m)	60
Distance between advance signs (m)	20
Minimum Rate of Taper	
Taper at Lane (m) <sup>2</sup>	1 in 10
Taper at Hard Shoulder (m) <sup>2</sup>	1 in 10
Transition Length (m)	2 x Taper Length
Maximum Cone Spacing	
Cone Height (mm)	750
At Taper (m) <sup>2</sup>	3
Longitudinal (m) <sup>2</sup>	6
Maximum Lamp Spacing	
At Taper (m)	6
Longitudinal (m)	12
Safety Zone	
Longitudinal (m)	15
Lateral (m)	0.5
Lanes	
Minimum Lane Width (m)	3 (2.5)
Two-way Roadway Width (m)	5

Note:  
 A. 45 degree taper is required at active temporary traffic controlled layouts with cones at 1m centres.  
 B. Cone spacing shown is the maximum permitted. Where geometry or any other site specific reason dictates the spacing shall be reduced accordingly.  
 C. The optimum lane width for all classes of vehicles is 3.3m. This may be reduced to a minimum of 3.0m. Below this, HGVs and buses must be marshalled past the works. The absolute minimum lane width, if only cars and light vehicles are present, is 2.5m. Refer to Chapter 8, Paragraphs 8.4.3.1 to 8.4.3.3.



**GMC Utilities Group Ltd**, GMC House, Millenium Business Park, Cappagh Road, Ballycoolin, Dublin 11, Ireland.  
 Tel: +353 (0)1 864 9800  
 Email: info@gmcirl.com

<b>Project ;</b>	29485626 WNM PRV Construction Works	
<b>Location ;</b>	L7005 Derrymullen Allenwood Kildare	
<b>TM Method ;</b>	Road Closure Site Layout	
<b>Designer ;</b> AM	<b>Drawn ;</b> AM	<b>Approved ;</b> DG
<b>Date ;</b>	12/05/2026	
<b>Scale ;</b>	NTS - USE FIGURED DIMENSIONS ONLY	
<b>TMP Guide Reference ;</b>	<b>TMP-003</b>	
<b>Dwg Number ;</b>	<b>GMC-TMP-26940-REV00</b>	

**IMPORTANT NOTE**  
 LOCAL RESIDENTS TO BE INFORMED OF WORKS PRIOR TO COMMENCEMENT



**SITE LOCATION MAP - L7005 Derrymullen Allenwood Kildare**



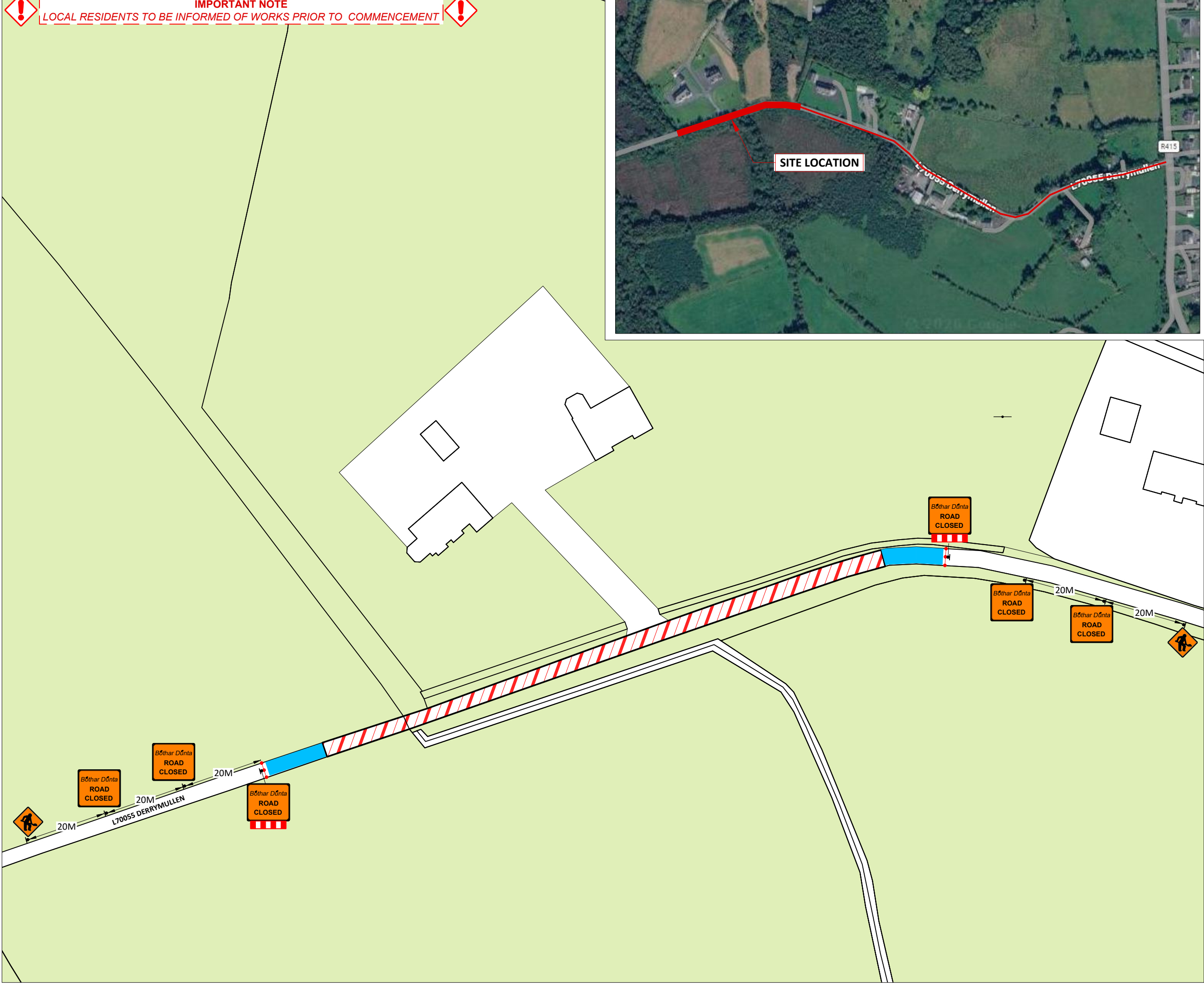
**SITE SPECIFIC NOTES**

1. Traffic Management to comply with Temporary Traffic Management 2019 publications Chapter 8 Traffic Signs Manual, Design Guidance & Operation Guidance.
2. This traffic management plan may only be implemented by a temporary traffic operations supervisor (tos) who must carry out a site risk assessment to modify (if necessary) the measures described to suit actual site conditions before implementation.
3. Road closed, diversion route provided
4. On single carriageway roads of 60 km/h signs to be placed at 20m intervals. Additional signage may be used where deemed necessary. (Type A & B)
5. Emergency services given priority at all times.
6. TMP is based on information received at time of design, minor changes may be required on site. Major changes to site works will require revised TMP.
7. The tos to determine exact position considering the site specifics.

- Site Access/Egress
- Uneven Surface
- Slippery Surface
- Overhead Cables
- During darkness at unlit areas following a site risk assessment additional lighting to be installed

- LEGEND:**
- WORK/PLANT AREA
  - SAFETY AREA
  - LATERAL SAFETY ZONE
  - SITE BARRIER
  - CONES
  - SIGN LOCATION & ORIENTATION
  - BARRIER BOARD

**IMPORTANT NOTE**  
LOCAL RESIDENTS TO BE INFORMED OF WORKS PRIOR TO COMMENCEMENT



Design Parameters for Level 1 (w) (Single Carriageway of 60 km/h & Multi-lane / Dual < 60km/h)	
Design Parameters	Roadworks Type A (>12 Hours)
Sign Size (mm)	600 Min
Sign Visibility (m)	60
Number of Signs	3
Cumulative Distance (m)	60
Distance between advance signs (m)	20
Minimum Rate of Taper	
Taper at Lane (m) <sup>2</sup>	1 in 10
Taper at Hard Shoulder (m) <sup>2</sup>	1 in 10
Transition Length (m)	2 x Taper Length
Maximum Cone Spacing	
Cone Height (mm)	750
At Taper (m) <sup>2</sup>	3
Longitudinal (m) <sup>2</sup>	6
Maximum Lamp Spacing	
At Taper (m)	6
Longitudinal (m)	12
Safety Zone	
Longitudinal (m)	15
Lateral (m)	0.5
Lanes	
Minimum Lane Width (m)	3 (2.5)
Two-way Roadway Width (m)	5

Note:  
 A. 45 degree taper is required at active temporary traffic controlled layouts with cones at 1m centres.  
 B. Cone spacing shown is the maximum permitted. Where geometry or any other site specific reason dictates the spacing shall be reduced accordingly.  
 C. The optimum lane width for all classes of vehicles is 3.3m. This may be reduced to a minimum of 3.0m. Below this, HGVs and buses must be marshalled past the works. The absolute minimum lane width, if only cars and light vehicles are present, is 2.5m. Refer to Chapter 8, Paragraphs 8.4.3.1 to 8.4.3.3.

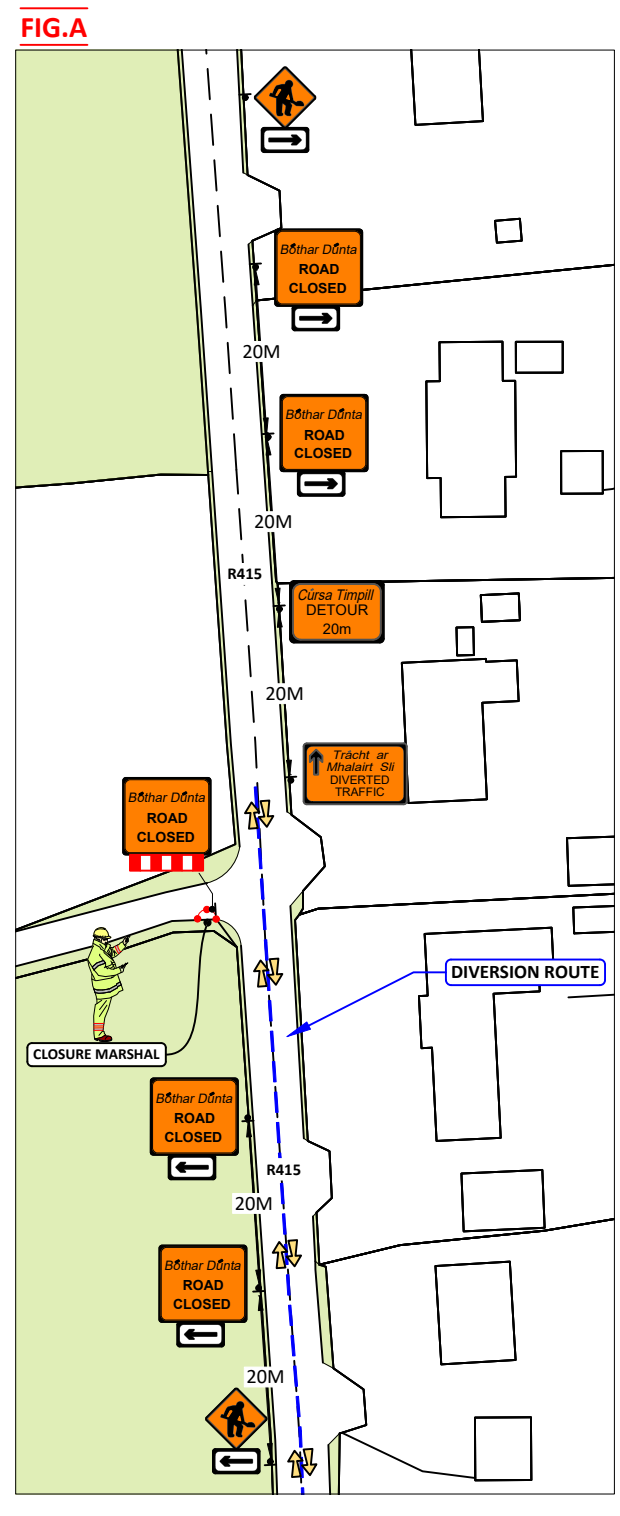
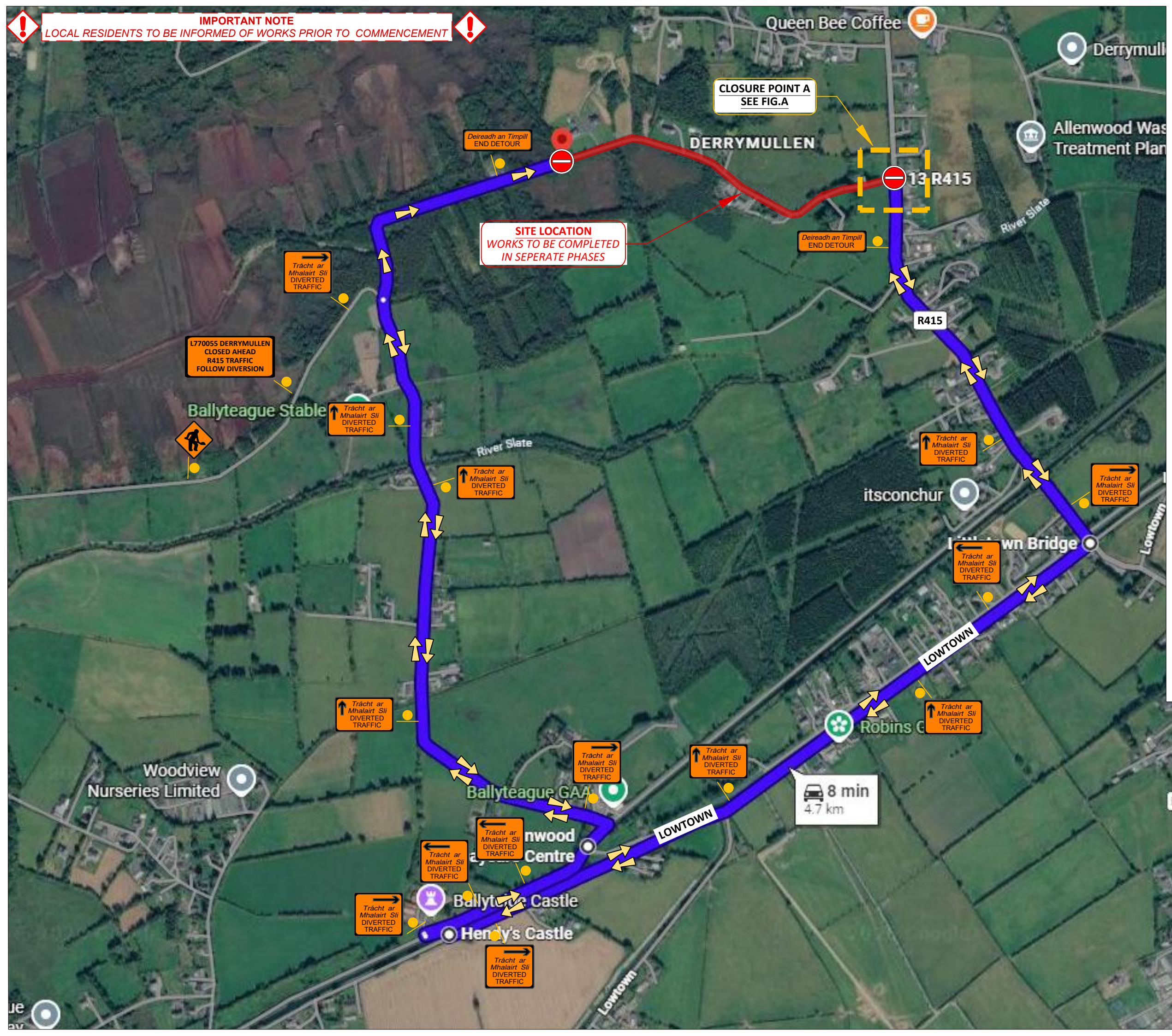


**GMC Utilities Group Ltd**, GMC House, Millenium Business Park, Cappagh Road, Ballycoolin, Dublin 11, Ireland.  
 Tel: +353 (0)1 864 9800  
 Email: info@gmcirl.com

<b>Project ;</b>	29485626 WNM PRV Construction Works	
<b>Location ;</b>	L7005 Derrymullen Allenwood Kildare	
<b>TM Method ;</b>	Road Closure Site Layout	
<b>Designer ;</b> AM	<b>Drawn ;</b> AM	<b>Approved ;</b> DG
<b>Date ;</b>	12/05/2026	
<b>Scale ;</b>	NTS - USE FIGURED DIMENSIONS ONLY	
<b>TMP Guide Reference ;</b>	<b>TMP-004</b>	
<b>Dwg Number ;</b>	<b>GMC-TMP-26941-REV00</b>	

**IMPORTANT NOTE**

LOCAL RESIDENTS TO BE INFORMED OF WORKS PRIOR TO COMMENCEMENT



**GMC Utilities Group Ltd**, GMC House,  
Millenium Business Park, Cappagh Road,  
Ballycoolin, Dublin 11, Ireland.  
Tel: +353 (0)1 864 9800  
Email: info@gmcirl.com

<b>Project ;</b>	29485626 WNM PRV Construction Works
<b>Location ;</b>	L7005 Derrymullen Allenwood Kildare
<b>TM Method ;</b>	Diversion Route
<b>Designer ;</b> AM	<b>Drawn ;</b> AM <b>Approved ;</b> DG
<b>Date ;</b>	12/05/2026
<b>Scale ;</b>	NTS - USE FIGURED DIMENSIONS ONLY
<b>TMP Guide Reference ;</b>	<b>TMP-005</b>
<b>Dwg Number ;</b>	<b>GMC-TMP-26942-REV00</b>