

To Whom It May Concern,

We the traders and residents of Eyre Street commend and welcome the Council's efforts to improve the great town of Newbridge through the Town Settlement Plan. We welcome the opportunity to give our assessment of the segments of the plan relating to Eyre Street in particular.

It is proposed that the Street be changed to a one-way system westbound. As anyone in business knows, convenience is king. The more obstacles you put in a customer's way, eventually they will just take their business elsewhere. Consider heavy weekend traffic in particular. Under this plan, we are asking customers of business' in Eyre Street travelling from "the top half" of the town to wait in heavy town centre traffic all the way down to the river to be able to make their left turn up Eyre Street. It's clear to see this one-way measure will cost the traders on Eyre Street business. However, we are willing to accept it on the grounds that something needs to be done to alleviate the overall congestion in the town and we all have to compromise to make the town work for everyone. Under previous one-way proposals, it was suggested that vehicles at the top of Eyre St would not be able to turn left onto Charlotte St., we propose that this be amended to allow vehicles turn left in addition to going straight on to Henry St or right onto Station Road. It is a regular occurrence for vehicles on Station Road /Charlotte Street to barely clear the yellow box, leaving drivers from Eyre Street blindsided as to what is coming from the Main Street side. It is thus unsafe to propose that vehicles can only go straight towards Henry Street. In addition, Henry Street has become a bottleneck with the widened footpaths, often leaving it difficult for 2 vehicles to pass each other on the road. This surely cannot be good for safety or traffic congestion.

The Plan also proposes "to reduce on-street non-resident parking and increase the width of pathways. ." This is supported by an artist's impression in the document. While not explicitly stated, it stands to reason that by widening pathways the result will be there will only be parking on one side of the street. There appears to be several misconceptions around the parking needs of the street. Currently on Eyre St, there are:

-38 businesses actively trading

-85 residential units (approx) This figure does not even include Eyre Court as it contains it's own off-street parking.

-There is also 1 sporting club (CYMS snooker club) on the street. To serve all the above there are circa 93 parking spaces (including loading bays within that number). Some of the businesses on the street are owner-manager/ single employee businesses and some have multiple employees. At a very miserly estimate if we allocated only 2 parking spaces per business on the street (1 for a manager/owner and 1 for a customer) that brings us to 76 spaces. Leaving just 17 spaces over. Anecdotally, many traders/employees make alternative arrangements to come to work by leaving their car at home and walking/cycling or carpooling to ensure there is available parking for their customers. One of the things that helps this work is the spread of businesses on Eyre Street. With some having predominantly a Mon-Friday trade and some doing most of their business at evenings and weekends. This helps spread the demand just a little.

On the residential side, the vast majority of the 85 residential units on the Street contain at least 2 (or more) adults. Very conservatively, if every adult living on the Street had a car this would easily add up to anywhere from 170-200 cars. Now clearly, we know this is not the case. Many residents are availing of the wonderful public transport links close by to get to work and go about their business. With Green bus, Local Link, Bus Éireann and Rail

links only walking distance away, Eyre Street is possibly one of the best-connected streets in the country. Any resident who has a vehicle, most certainly needs it -consider elderly or infirm residents, tradesmen, couriers, those on nightshift, or working in an area not served by public transport. We undertook a street walk yesterday evening to give an accurate snapshot of the parking situation on the street. We have attempted to attach photos to the submission. The photos were taken on the evening of Tuesday the 14th of October at around 20:30. Tuesday would be considered a quieter evening on the Street. The photos were taken all along the length of the Street. What you'll notice is 3 free parking bays, but 7 cars parked on double yellow lines. So, in effect, the parking was oversubscribed by 4 cars on an ordinary quiet Tuesday evening. Consider what it's like at weekends when almost all residents are at home, trade is busiest and there is a match on in St. Conleth's Park or there is a tournament on in the CYMS snooker club. Many of the initiatives in this Plan are aimed at encouraging people to walk and cycle more and to reduce car journeys into the town centre especially and the "10-minute town" concept. We fully support this. From the above car usage/ownership and transport figures it's clear to see that Eyre Street is already a shining example of these principles in action. An example of people working together, sustainable transport choices and a reduction in car dependency widely deployed by traders and residents alike. To make the Street viable for ALL businesses and an attractive place to live, it is crucial that the current level of parking is maintained. We are therefore proposing that the current amount of parking spaces remain as is and the footpaths not be widened. It must be noted that with the various laneways, entrances & accessways and for traffic flow on the Street an abundance of parking spaces are already lost to double yellow lines (totally necessary and welcomed), meaning we are down to the bare bones already. Considering all the above we believe the merits of this proposal are clear & obvious and very much in keeping with the sustainable transport and overall objectives of the Plan.

As part of the Plan, it is suggested to improve on-street lighting. We on the Street have been campaigning for this for many years and would very much welcome improvements in this area. We strongly believe this would help the image and appearance of the street, help reduce anti-social behaviour and make the Street a more inviting place.

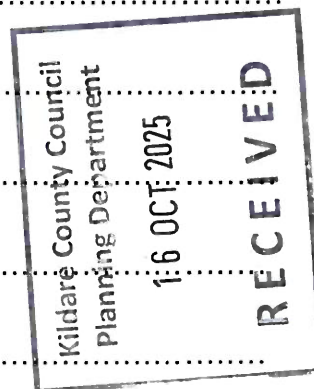
We trust you can see our proposals are rooted in a desire to make both Eyre Street and the town of Newbridge better for all it's citizens. We feel we have demonstrated a fair-minded balanced approach, and a willingness to compromise. Thank you for taking the time to read this submission and should further consultation be required, we are more than happy to do so.

Name: *Sarahna Mallick*

Address: *Caro Sun*
Eyre St Newbridge

Email: *Office@Carosun.ie*

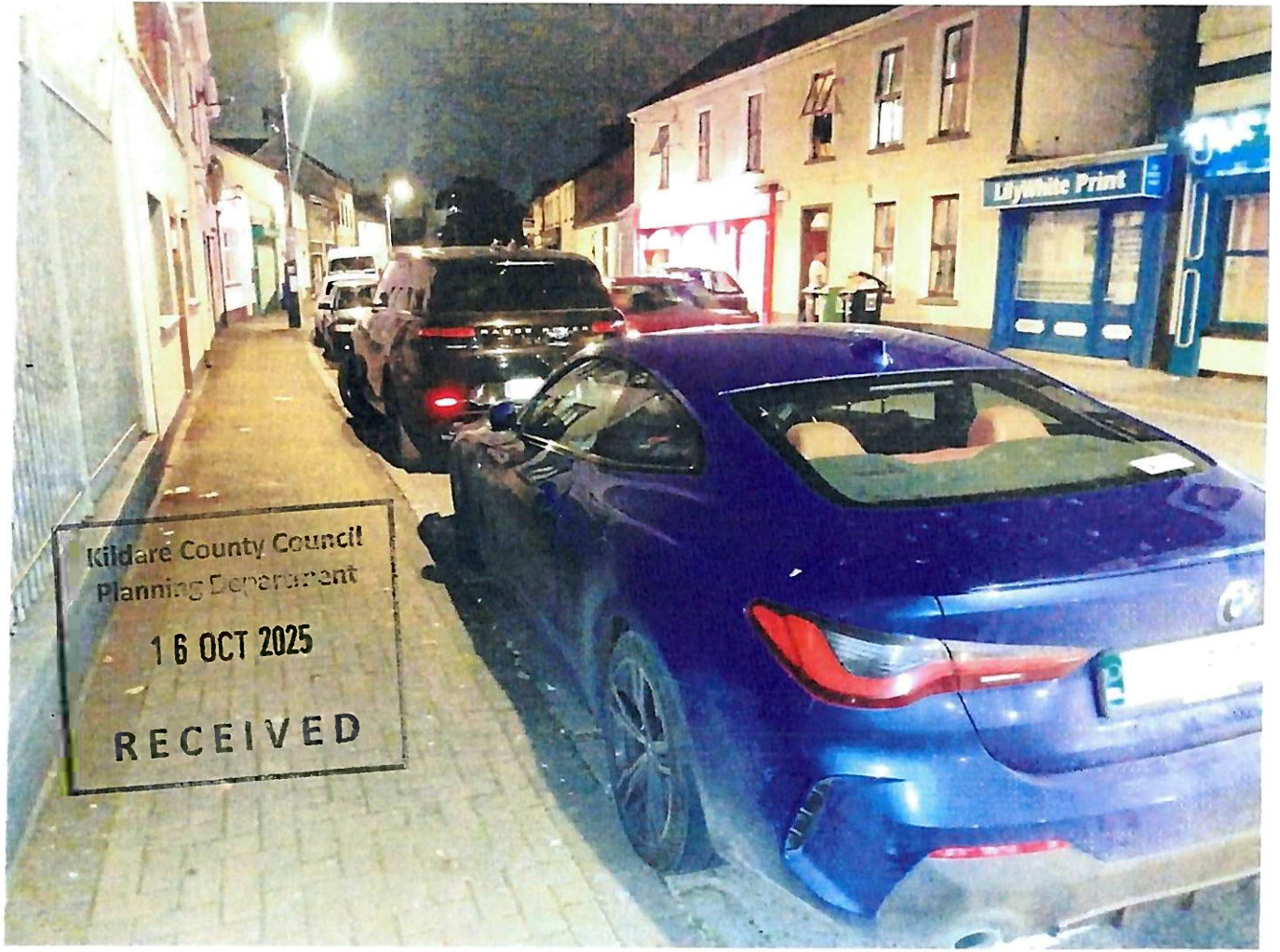
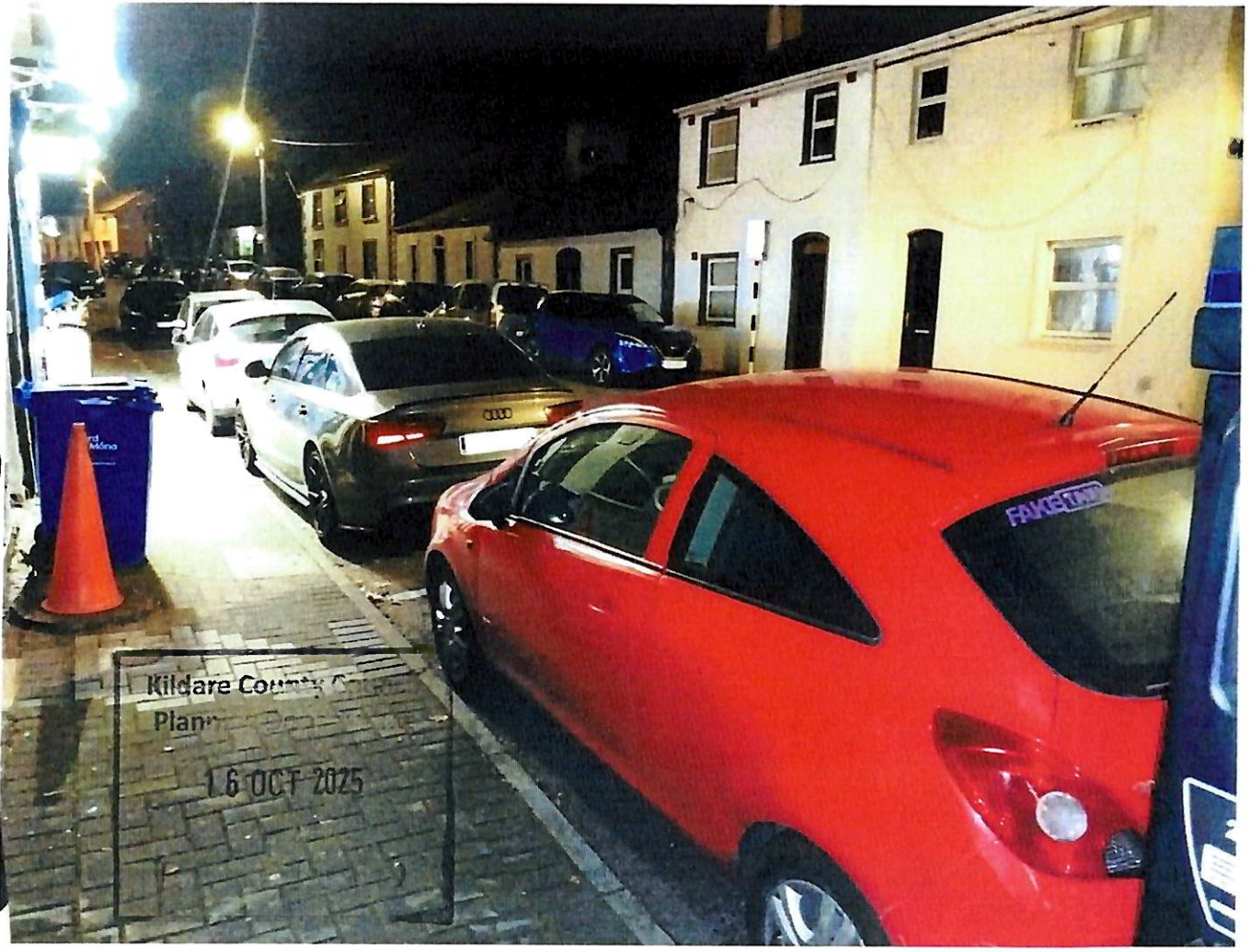
Date: *15.10.25*



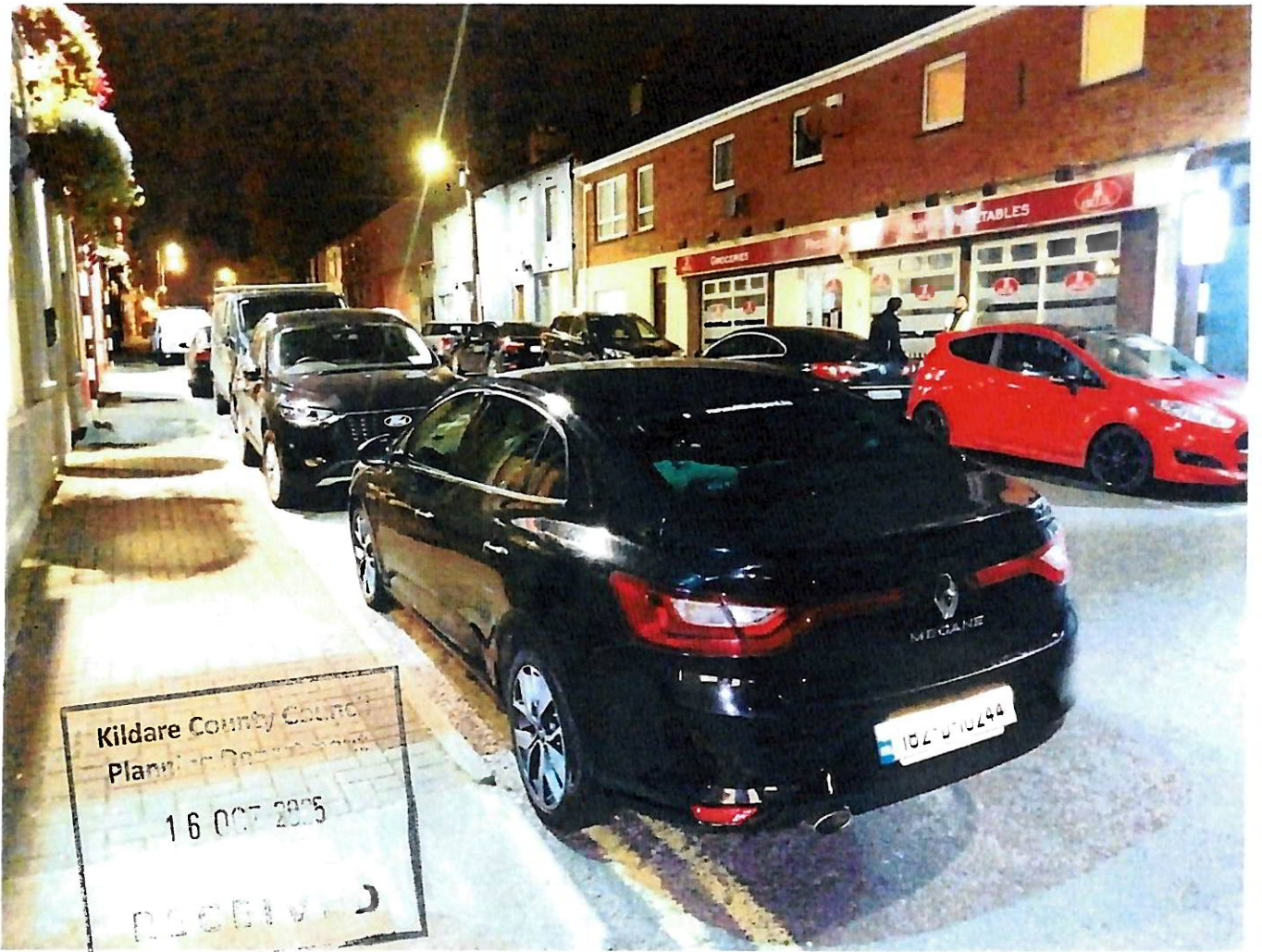
11111 WALKER ON
OCT 14th @ 20:30

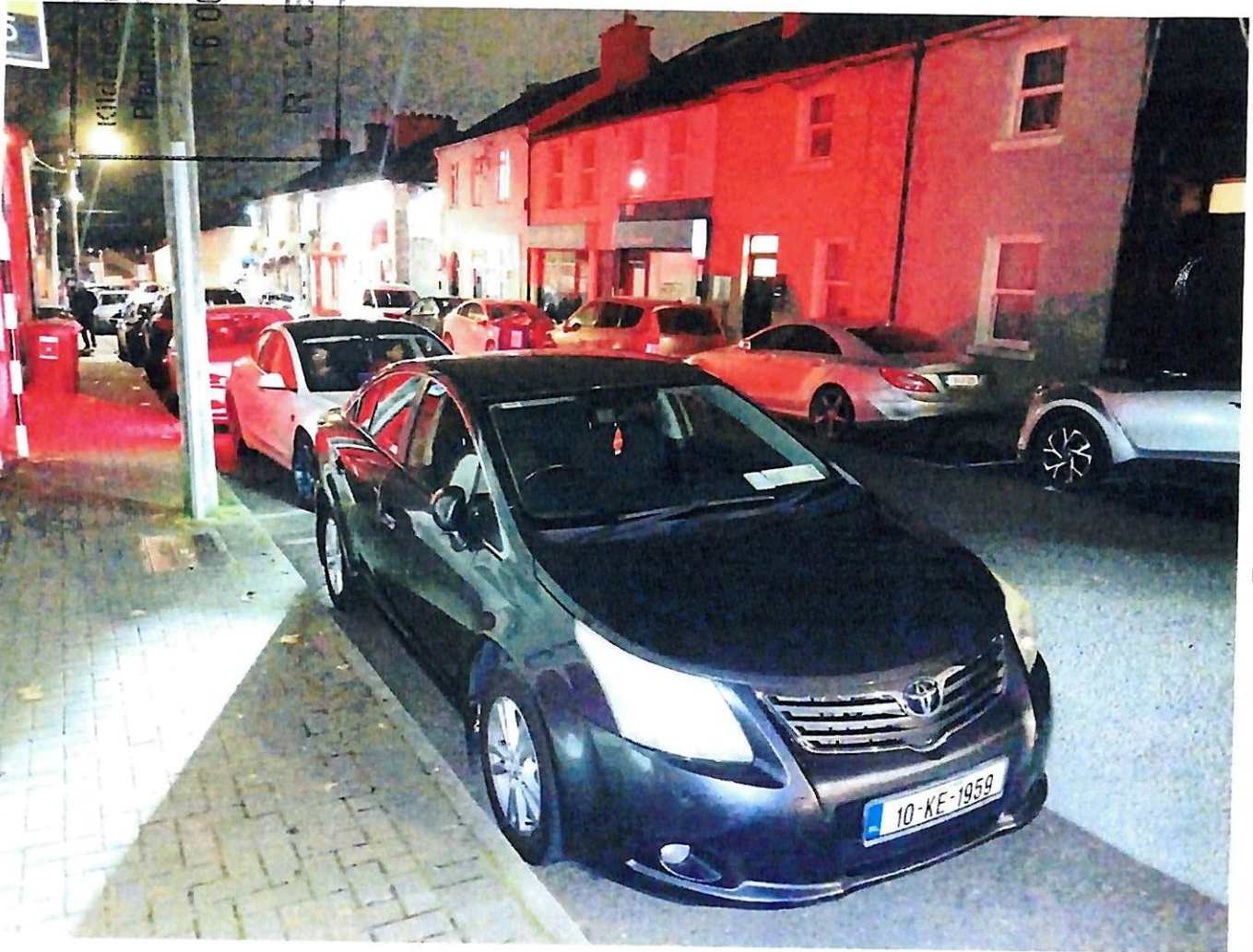
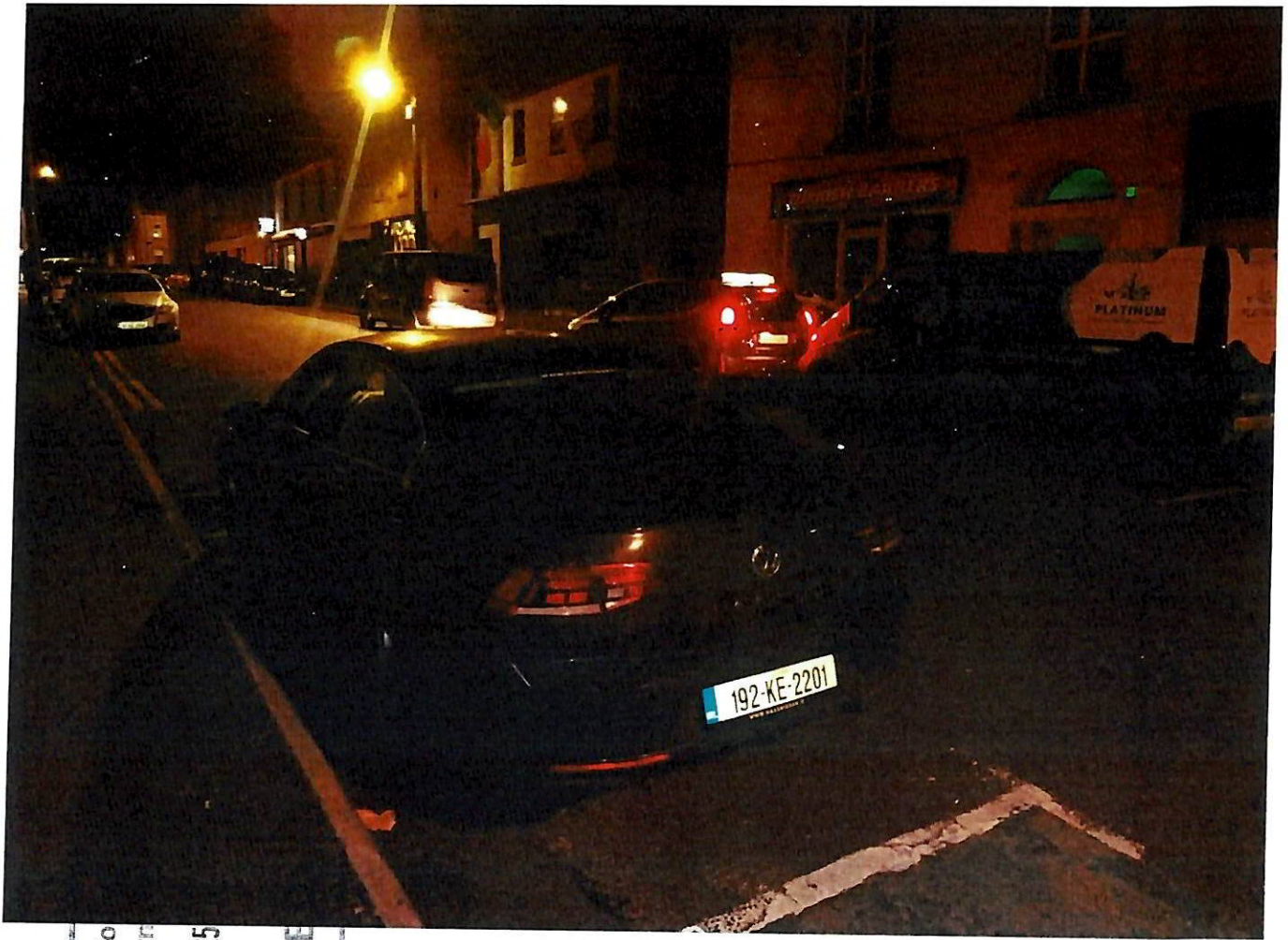


WINDY LANE JN
OCT 14th @ 20:30



PHOTOS TAKEN ON
OCT 14th @ 20:30

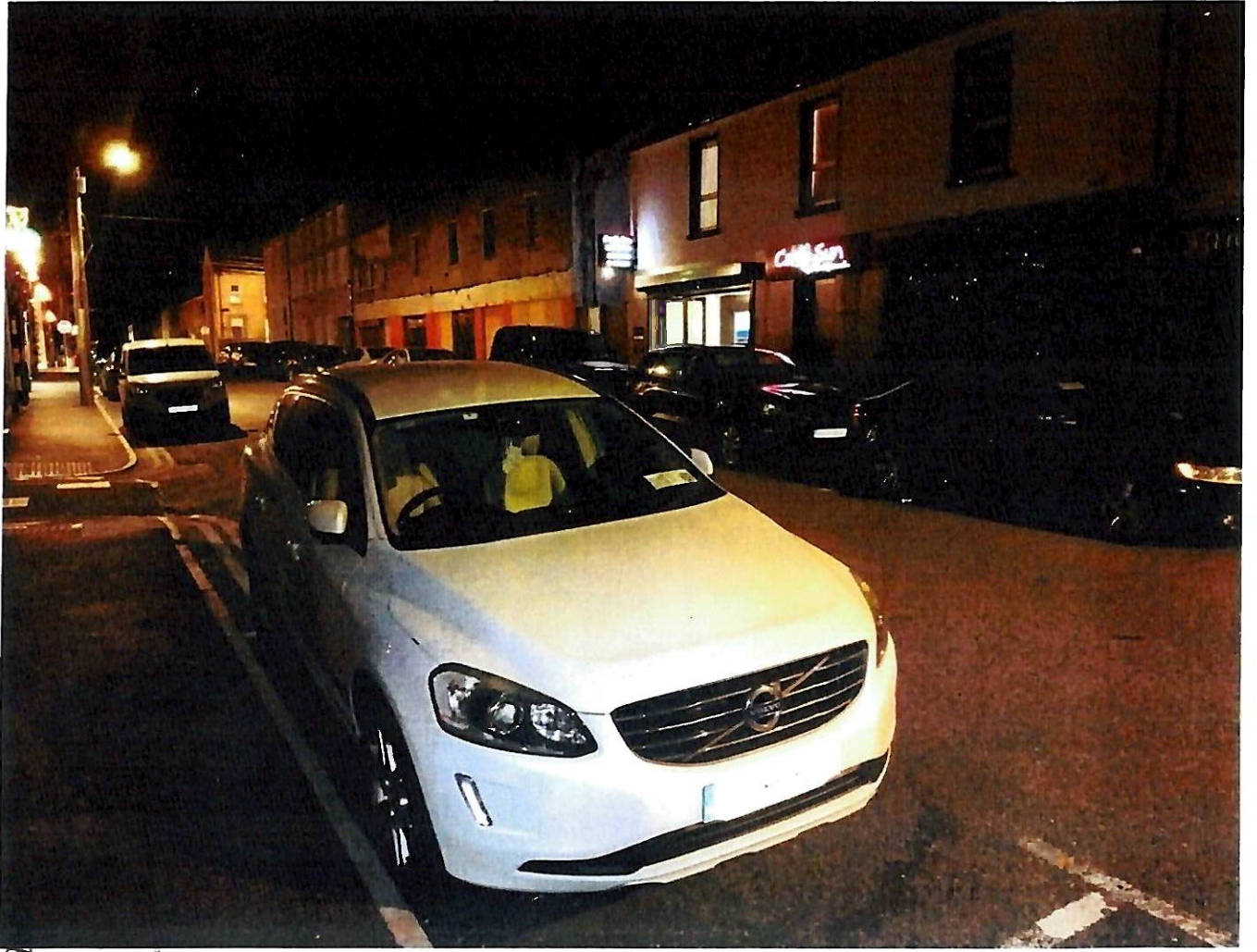




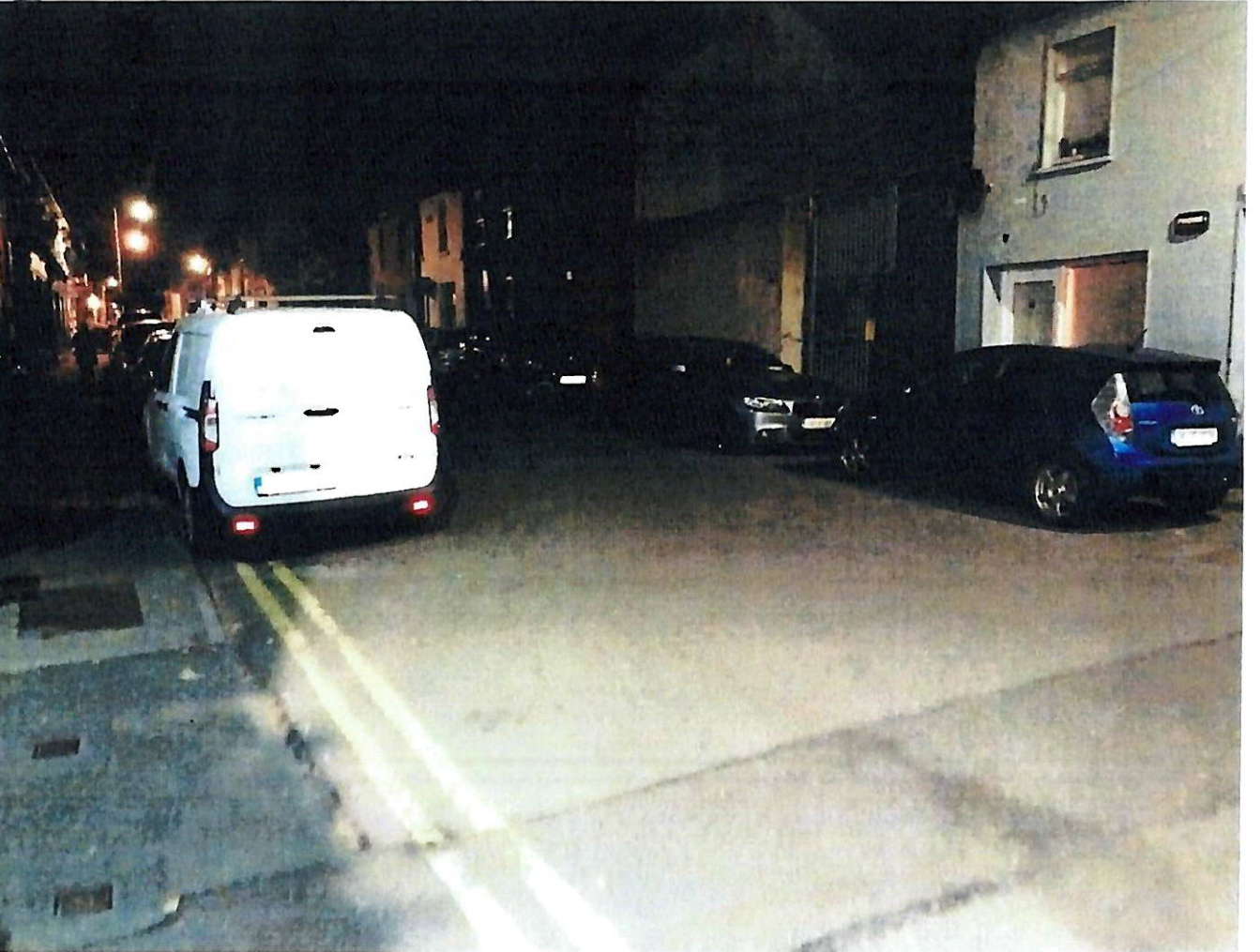
Kildare County Co
Departm
16 OCT 2025
RECEIVE

PHOTOS TAKEN
ON OCT 14th @ 20:30

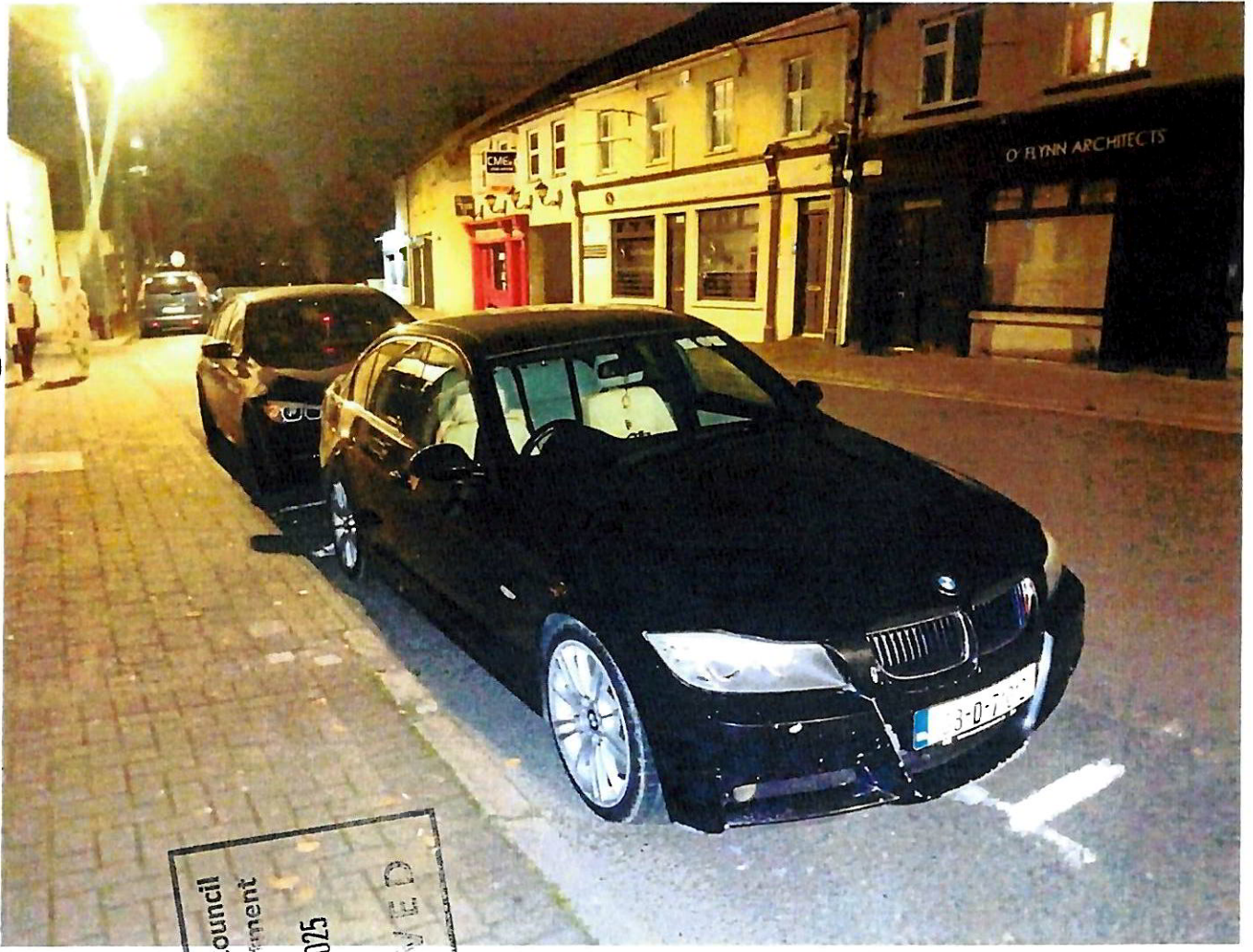
140503 TAKEN SW
OCT 14th @ 20:50



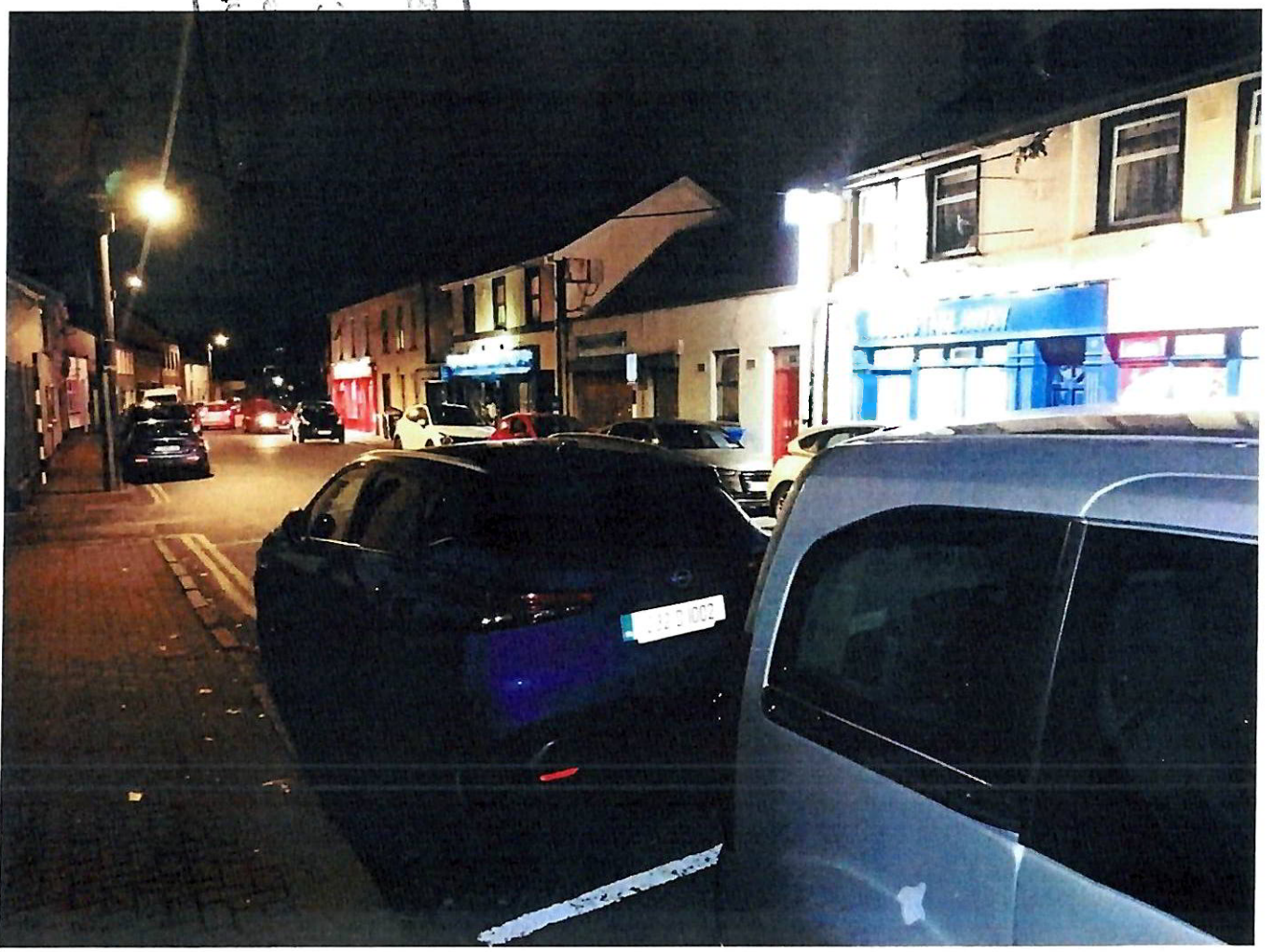
Kildare County Council
Planning Department



PHOTOS TAKEN ON OCT 14th @ 20:30



City Council
Department
OCT 2025
RECEIVED



PHOTOS TAKEN ON OCTOBER 14th AT 20:30

