

APPENDIX 2

WIND ENERGY STRATEGY (as varied)

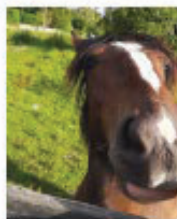
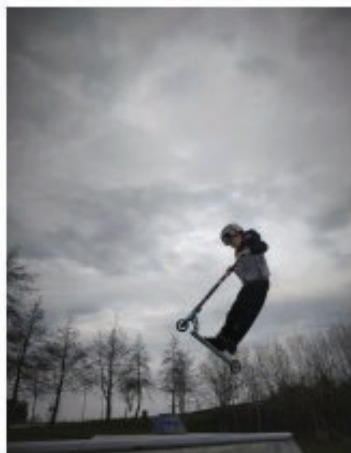


Table of Contents

Introduction	1
Amendment No. 9.....	2
To amend Section 2.4.3 of the Wind Energy Strategy at Appendix 2 of the Kildare County Development 2023-2029 (as varied) to reflect the updated Landscape Character Assessment (2025).	2
Amendment No. 10.....	3
To amend text and maps in Section 3.2.1 and 3.2.3 of the Wind Energy Strategy at Appendix 2 of the Kildare County Development 2023-2029 (as varied) to reference the Landscape Character Assessment (2025).	3
Amendment No.11	13
To amend Section 4 of the Wind Energy Strategy at Appendix 2 of the Kildare County Development 2023-2029 (as varied) to reflect the Landscape Character Assessment (2025).	13

Introduction

Kildare County Council resolved to make Variation No. 4 (Landscape Character Assessment 2025) of the Kildare County Development Plan 2023-2029 (as varied) at a Special Meeting on the 27th of April 2026.

Variation No. 4 of the Kildare County Development Plan 2023-2029 (as varied) is effective as of 27th April 2026.

This document outlines amendments to Appendix 2 (Wind Energy Strategy) of the Kildare County Development Plan 2023-2029 (as varied) as follows:

- Amendments to Sections 2.4.3, 3.2.1, 3.2.3 and 4 of the Wind Energy Strategy.
- Insertion of new Figure No. 3 (Landscape Character Areas) and Figure No. 3A (Landscape Character Types) and deletion of Table 3.
- Replacement of Map Nos. 2, 5, 8, 9, 10, 11 and 12.

The existing text of Appendix 2 (Wind Energy Strategy) is shown in normal font. Deletions are indicated as ~~red text with strikethrough~~ and insertions are presented in *green italics*.

Each amendment is preceded by an explanatory table which includes the amendment number, the reason for the amendment and the Plan chapter/section/page number for the amendment. There are three amendments included in this document, number 9 -11 inclusive.

Amendment No. 9

To amend Section 2.4.3 of the Wind Energy Strategy at Appendix 2 of the Kildare County Development 2023-2029 (as varied) to reflect the updated Landscape Character Assessment (2025).

Appendix	Section(s)	Page(s)
Appendix 2: Wind Energy Strategy	2.4.3	12-13

Amend text in Section 2.4.3 of the Wind Energy Strategy as follows:

2.4.3 Landscape Character Assessment

The ~~updated-county's~~ Landscape Character Assessment (2025) for the county is included in Chapter 13 ~~and forms Appendix 13~~ of the ~~Kildare~~ County Development Plan ~~2023-2029 (as varied)~~. The natural diversity of the landscape, coupled with human interaction in the form of introduced features such as hedgerows, woodlands, archaeological monuments, settlements and buildings, all serve to give Kildare its distinctive characteristic landscape. All developments which take place has the ability to impact on this landscape, positively and negatively. It is essential therefore that the landscape is protected and managed in a sustainable and coherent manner. A review of the Kildare County Development Plan landscape provisions was ~~recently~~ undertaken to provide a robust strategy which classifies the landscape of the county, appraises landscape sensitivity, making a judgement on sensitivity to change and taking into account historical, cultural, religious and other understandings of the landscape.

Based on the findings of the ~~updated~~ Landscape Character Assessment a landscape sensitivity rating was developed for each of the ~~updated~~ Landscape Character Areas and Landscape Character Types. Landscape sensitivity is a measure of the ability of the landscape to accommodate change or intervention without suffering unacceptable effects to its character and values. ~~It is determined using the following factors: slope, ridgeline, water bodies, land use and prior development.~~

~~The updated Landscape Character Assessment identified four~~ 5 classes of sensitivity ~~were developed~~, these include:

- ~~Class 1 - Low Sensitivity - North-Western Lowlands, Northern Lowlands, Central Undulating Lands and Southern Lowlands.~~
- ~~Class 2 - Medium Sensitivity - Eastern Transition Lands and South-Eastern Uplands.~~
- ~~Class 3 - High Sensitivity - Western Boglands and Eastern Uplands.~~
- ~~Class 4 - Special - Chair of Kildare, Northern Hills, River Liffey and River Barrow, Dun Ailinne and Old Kiltcullen.~~
- ~~Class 5 - Unique - The Curragh and Pollardstown Fen.~~

- *High Sensitivity – The Curragh Plains.*
- *Medium to High Sensitivity – The Bog of Allen and River Liffey Valley & Plains.*
- *Medium Sensitivity – Carbury Boyne Lowlands, Barrow Grand Canal Corridor, The Six Hills, The Cill Dara Lowlands, the South Eastern Kildare Hills and the Naas and Liffey Foothills.*
- *Medium to Low Sensitivity – Slí Mhór Corridor.*

Amendment No. 10

To amend text and maps in Section 3.2.1 and 3.2.3 of the Wind Energy Strategy at Appendix 2 of the Kildare County Development 2023-2029 (as varied) to reference the Landscape Character Assessment (2025).

Appendix	Section(s)	Page(s)
Appendix 2: Wind Energy Strategy	3.2.1 and 3.2.2	23-52

Amend text in Section 3.2.1 of the Wind Energy Strategy as follows:

3.2.1 Kildare Landscape Character Assessment

The Guidelines recommend that an evaluation of the landscape and its sensitivity for wind energy developments be prepared or utilised. Factors that can inform landscape sensitivity to wind energy development include scenic quality, rarity, uniqueness, natural and cultural heritage and environmental considerations. Special attention is recommended in areas where there is higher potential for the occurrence of adverse visual impacts arising from limited assimilative capacity.

In 2025, in response to Action LR A1 of the Kildare County Development Plan 2023-2029 (as varied) (hereafter referred to as ‘the Plan’), a review of the County Landscape Character Assessment was carried out, in accordance with the provisions of the EPA’s Reframe Landscape Character Assessment Toolkit (2022). The Landscape Character Assessment (2025), which now forms Appendix 13 to the Plan, focused on the discernment of the character of the landscape based on its land cover and landform, but also on its values, such as historical, cultural, religious and other understandings of the landscape. This approach recognises the importance of place and how people perceive their landscapes. It concentrates on the distinctiveness of different landscapes and on the sensitivity of that landscape to development. This Landscape Character Assessment complies with the National Landscape Strategy for Ireland 2015-2025.

Figure 3 *illustrates* the Landscape Character Areas (LCAs) of the county as contained in the *Landscape Character Assessment (2025) that forms Appendix 13 of the Kildare County Development Plan (CDP). The process identifies and explains the combination of elements and features that make landscapes distinct from one*

another by mapping and describing Landscape Character Types (LCTs) and Landscape Character Areas (LCAs). The Landscape Character Assessment (2025) identifies ten LCAs in the county that are listed below and illustrated in Figure 3 below. The LCAs are described in more detail in Chapter 4 of the Landscape Character Assessment.

Landscape Character Areas

- *Carbury Boyne Lowlands*
- *Slí Mhór Corridor*
- *River Liffey Valley and Plains*
- *Bog of Allen*
- *Barrow Grand Canal Corridor*
- *The Six Hills*
- *Curragh Plains*
- *Naas and Liffey Foothills*
- *South Eastern Kildare Hills*
- *Cill Dara Lowlands.*

Replace existing map in Figure 3 and amend title of Figure 3 as follows:

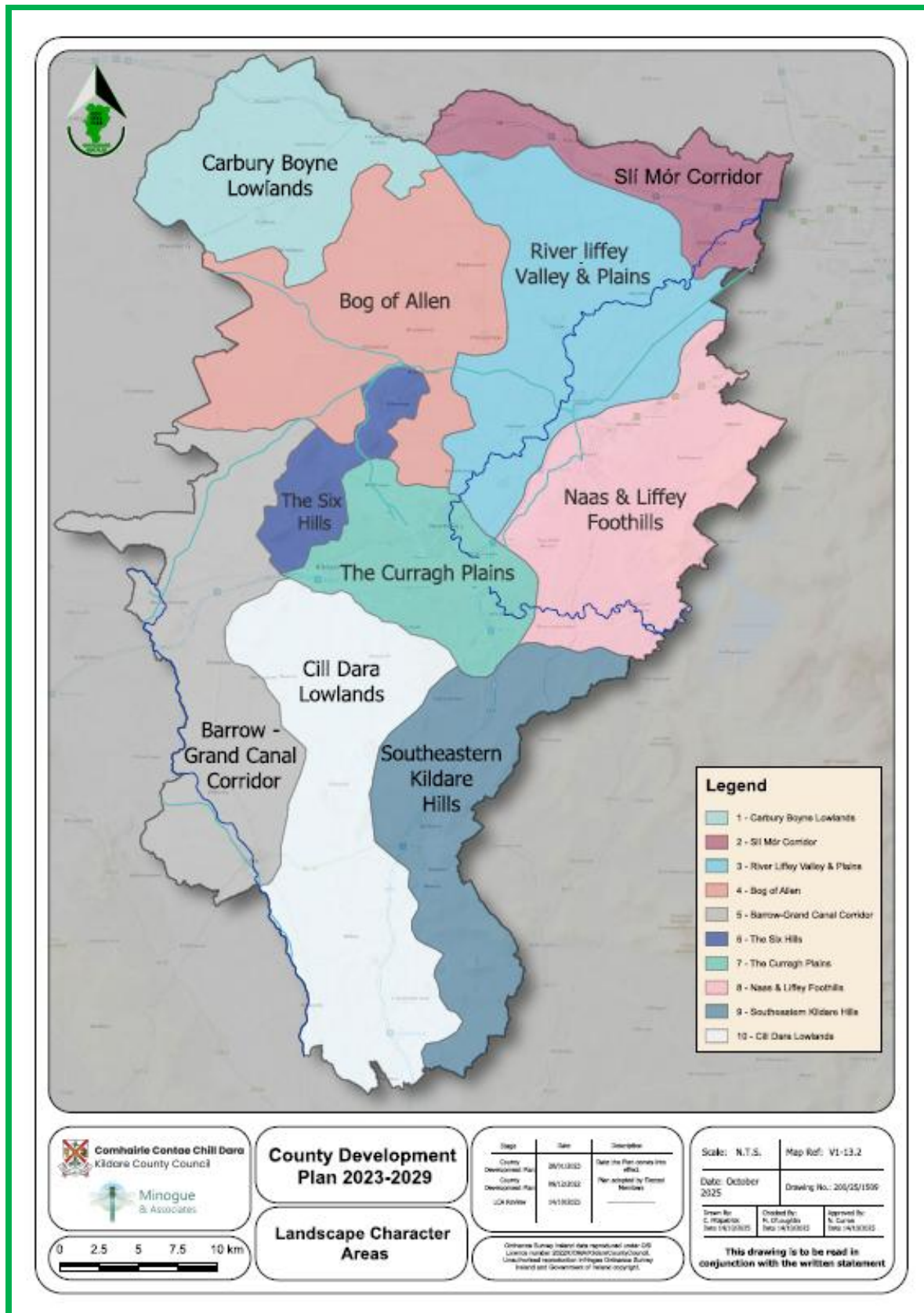


Figure 3: *Landscape Character Areas*

Figure 3A illustrates the eight LCTs that are identified in the Landscape Character Assessment (2025), which are listed below and described in more detail in Chapter 3 of the Landscape Character Assessment (2025) that forms Appendix 13 of the Kildare County Development Plan 2023-2029 (as varied).

LCT1 – Farmed foothills

LCT2 – Lowland plains

LCT3 - Farmed rolling hills

LCT4 – Transport Corridor

LCT5 – River Corridor

LCT6 – Canal Corridor

LCT7 – Peatland and semi-natural vegetation

LCT8 - Settlement

Insert new Figure 3A after Figure 3 as follows:

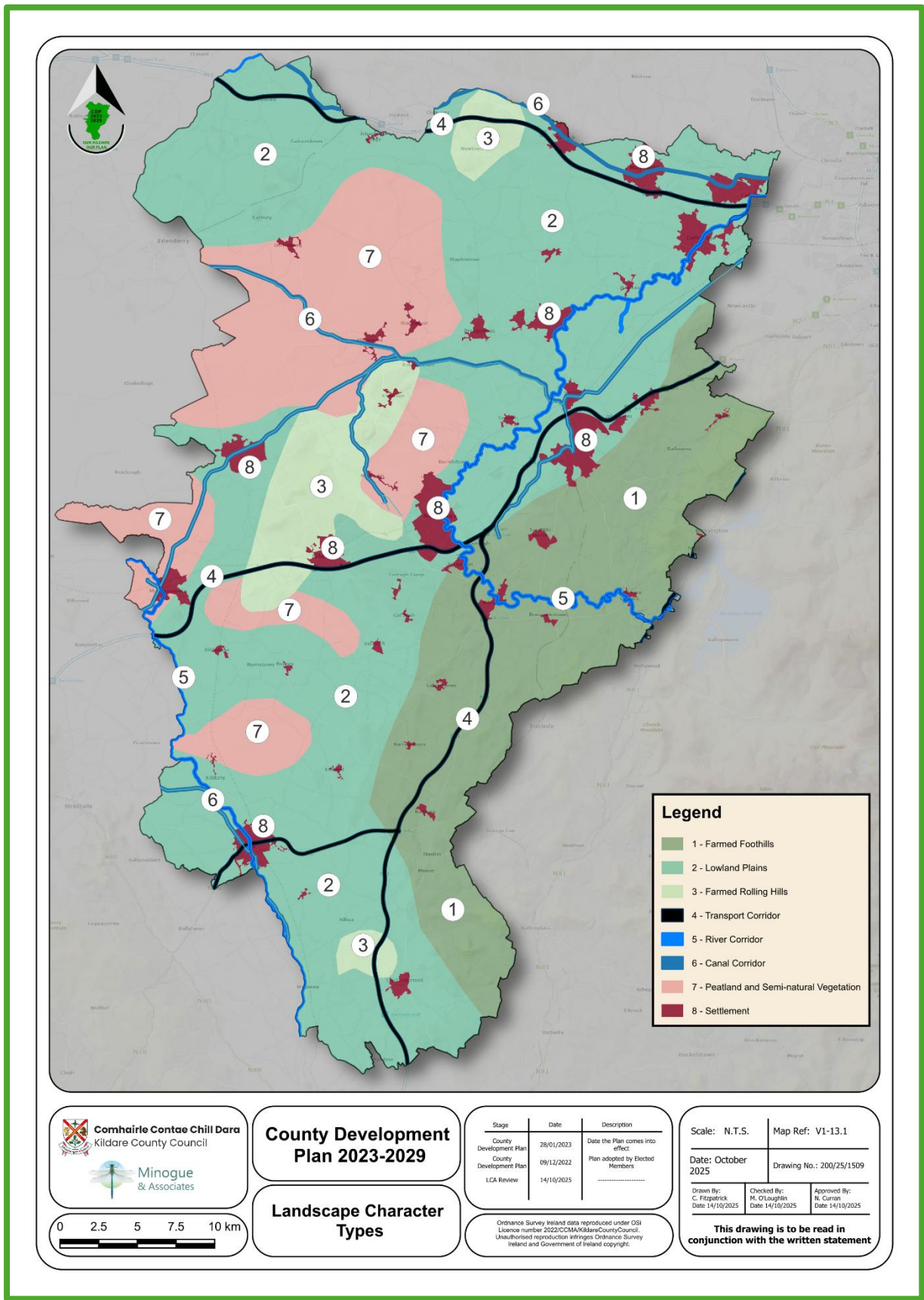







Figure 3A – Landscape Character Types

Delete Table 3 as follows:

~~Table 3: Classes of landscape sensitivity in County Kildare~~

Sensitivity	Landscape Character Area	Location	Description
Class 1 Low Sensitivity	North-Western Lowlands Northern Lowlands Central Unfolding Lands Southern Lowlands		Areas with the capacity to generally accommodate a wide range of uses without significant adverse effects on the appearance or character of the area.
Class 2 Medium Sensitivity	Eastern Transition Lands South-Eastern Uplands		Areas with the capacity to accommodate a range of uses without significant adverse effects on the appearance or character of the landscape having regard to localised sensitivity factors.
Class 3 High Sensitivity	Western Boglands Eastern Uplands		Areas with reduced capacity to accommodate uses without significant adverse effects on the appearance or character of the landscape having regard to prevalent sensitivity factors.
Class 4 Special	Chair of Kildare Northern Hills River Liffey River Barrow		Significant adverse effects on the appearance or character of the landscape having regard to prevalent sensitivity factors.
Class 5 Unique	The Curragh Pollardstown Fan Dun Ailinne		Areas with low capacity to accommodate uses without significant adverse effects on the appearance or character of the landscape having regard to special sensitivity factors.

~~Source: Proposed County Development Plan 2023-2027~~

This Landscape Character Assessment complies with the National Landscape Strategy for Ireland 2015-2025. Appendix 1 of the Draft Revised Wind Energy Guidelines 2019 states this assessment should convert this map using three sensitivity classifications. Therefore, the *four* classifications of landscape listed in the Kildare Landscape Character Assessment (2025) are converted into three following classifications for the purposes of this Wind Strategy:

- ~~a) Low Landscape Sensitivity (Class 1 – Low Sensitivity~~
- ~~b) Medium Landscape Sensitivity (Class 2 – Medium Sensitivity, Class 3 – High Sensitivity~~
- ~~c) High Landscape Sensitivity (Class 4 – Special, Class 5 – Unique~~

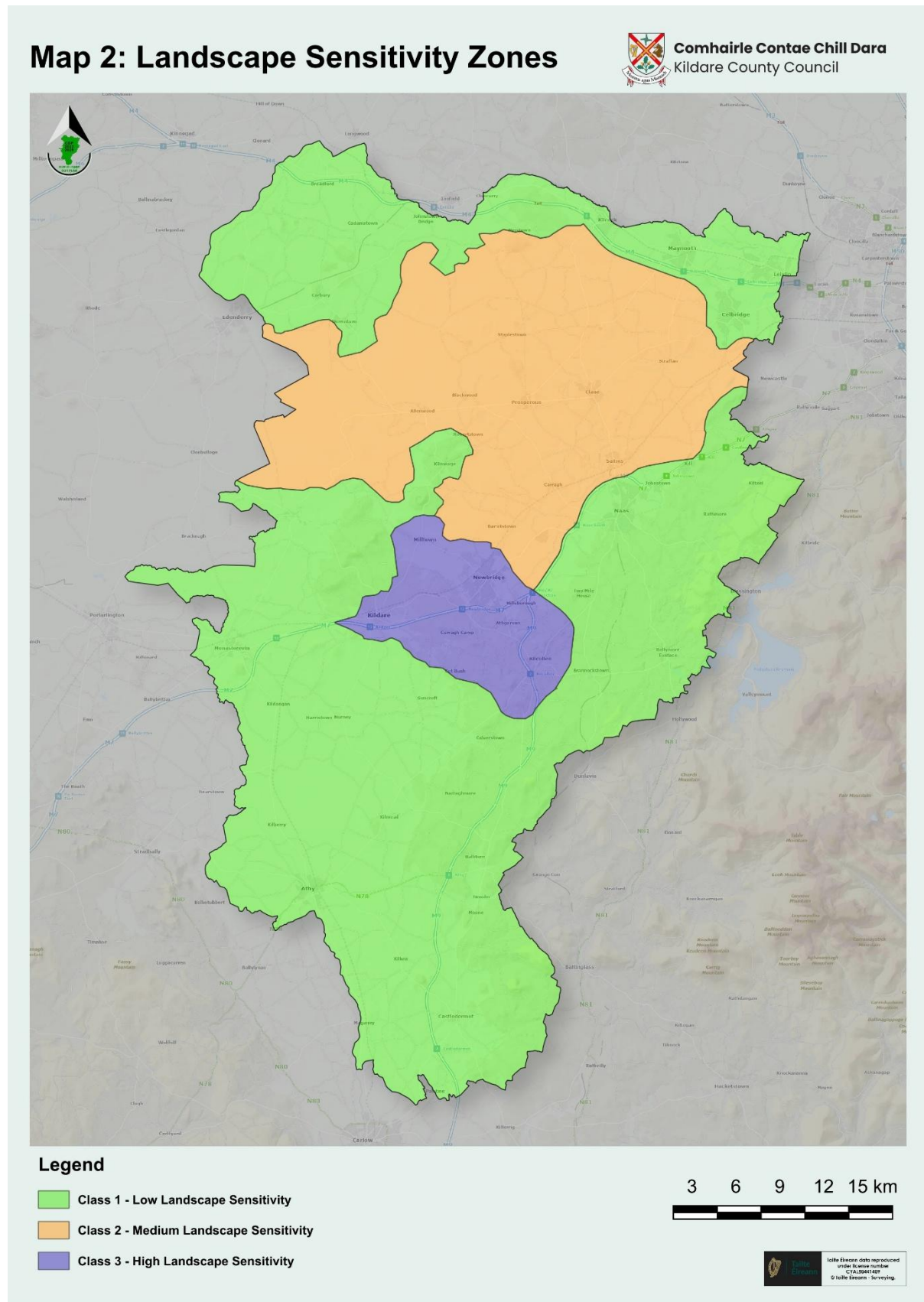
Class 1 – Low Landscape Sensitivity (Medium to Low Sensitivity, Medium Sensitivity)

Class 2 – Medium Landscape Sensitivity (Medium to High Sensitivity)

Class 3 – High Landscape Sensitivity (High Sensitivity)

Below is a rationalised map of this landscape character assessment with these three levels of sensitivity mapped which will be used for the purposes of this Wind Energy Strategy.

Replace the existing Map 2 as follows:



Map 2: Landscape Sensitivity Zones.

Amend the title of Section 3.2.3 of the Wind Energy Strategy as follows:

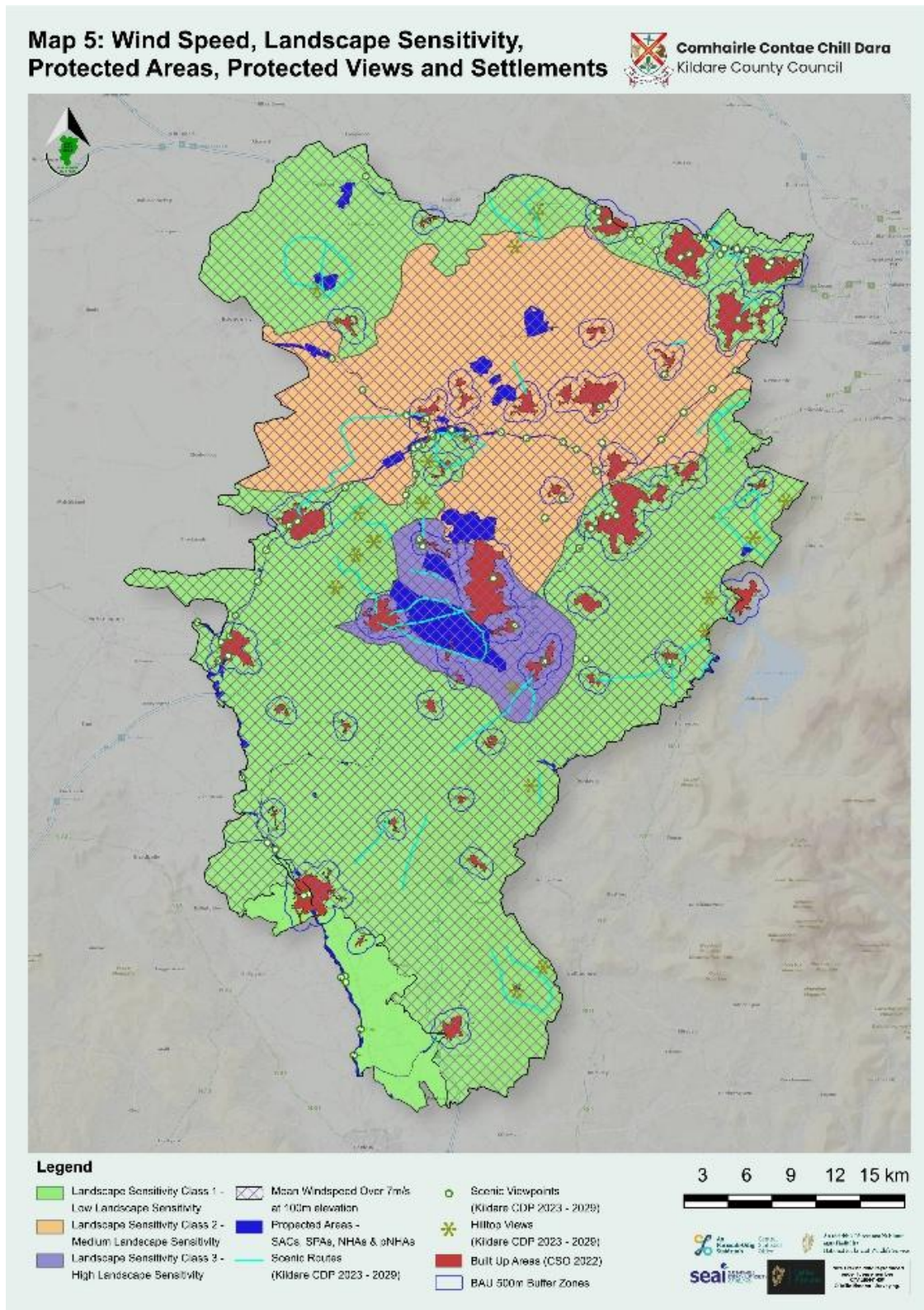
2.3.2.3 Evaluation of Step 2

Amend the first paragraph of Section 3.2.3 of the Wind Energy Strategy as follows:

3.2.3 Evaluation of Step 2

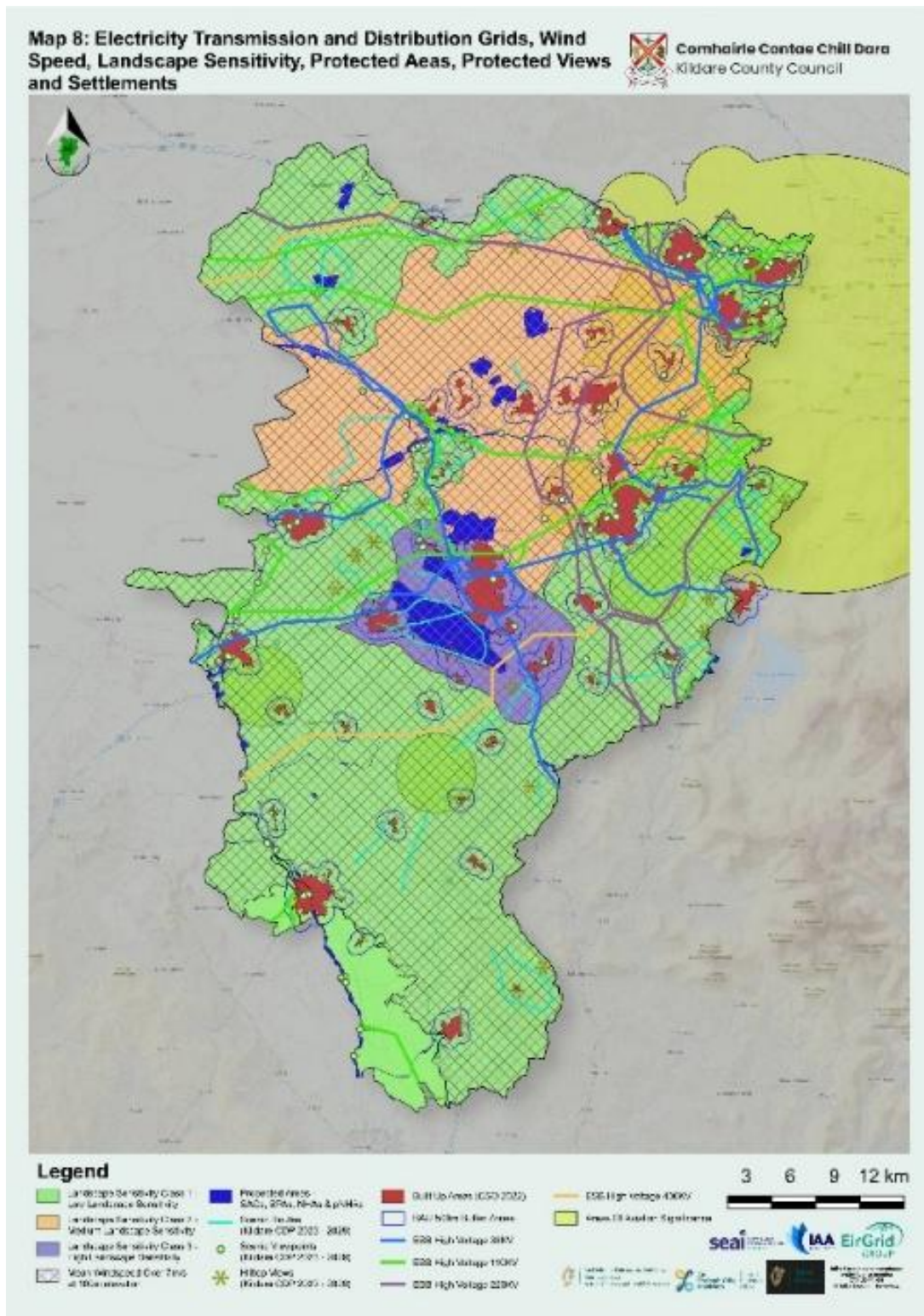
County Kildare is mainly flat and has a landscape largely suitable for considerable wind energy developments. However, it does contain some prominent upland areas including the **Six Hills** and the *western part of the Slí Mhór Corridor Landscape Character Area* which would be sensitive to large scale development. Similarly, the Liffey and Barrow river valleys would also be sensitive to large scale development. Unique area of landscape including the Curragh and Pollardstown Fen would be sensitive to all types of wind energy.

Replace existing Map 5 in Section 3.3.5 of the Wind Energy Strategy as follows:



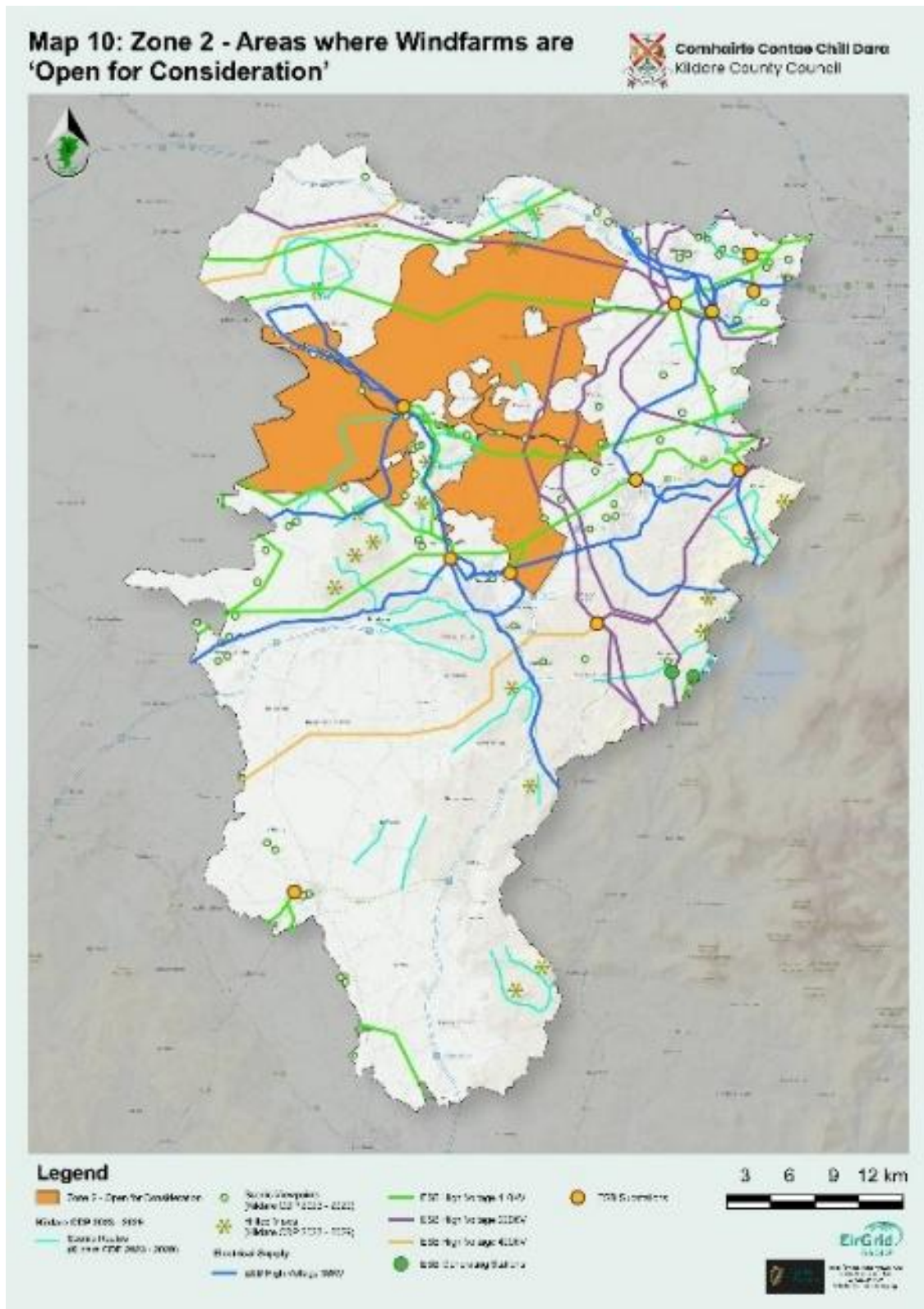
Map 5: Wind Speed, Landscape Sensitivity, Protected Areas, Protected Views and Settlements.

Replace existing Map 8 in Section 3.4.4 of the Wind Energy Strategy as follows:



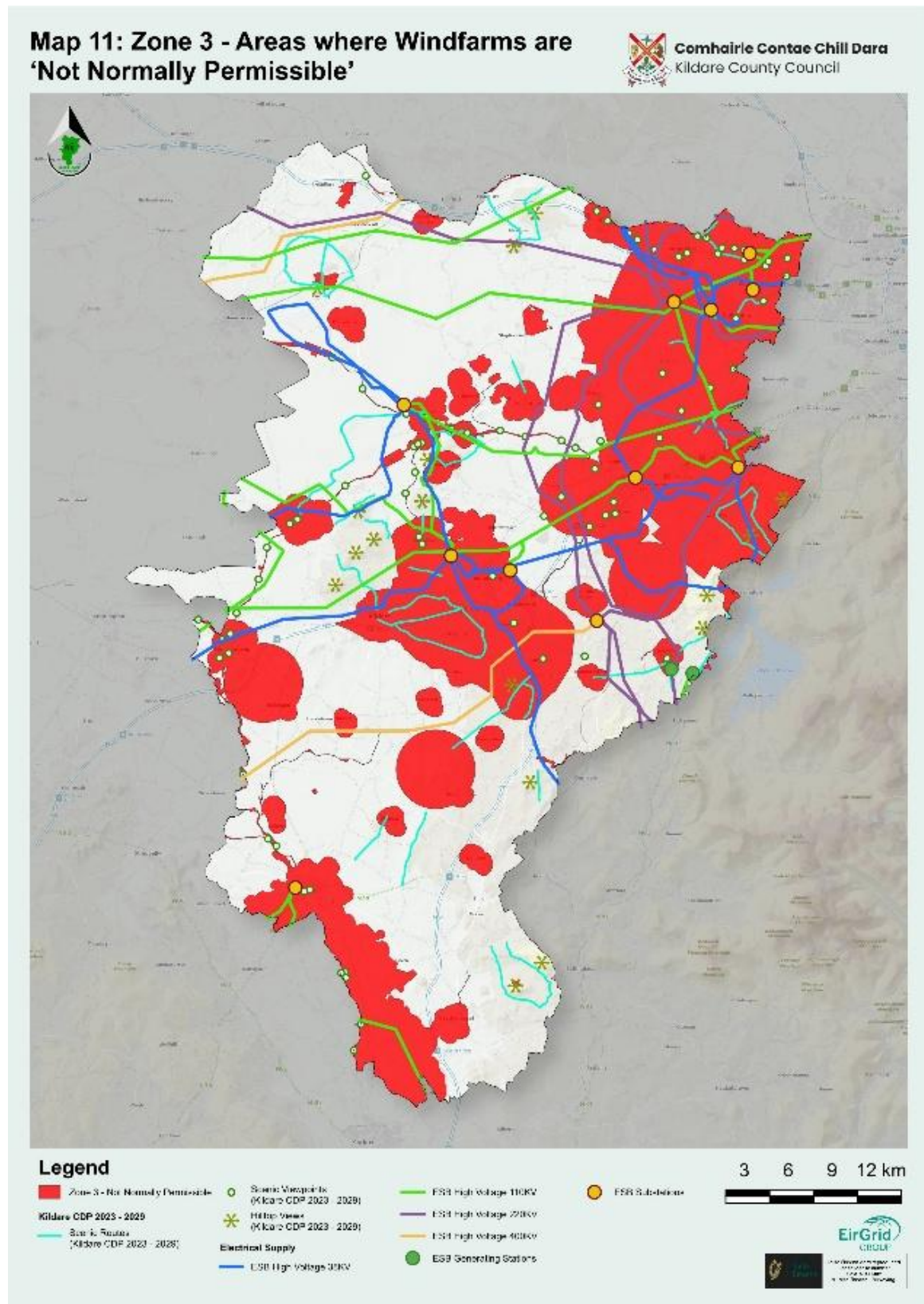
Map 8: Electricity Transmission and Distribution Grids, Wind Speed, Landscape Sensitivity, Protected Areas, Protected Views and Settlements.

Replace existing Map 10 in Section 4.3 of the Wind Energy Strategy as follows:



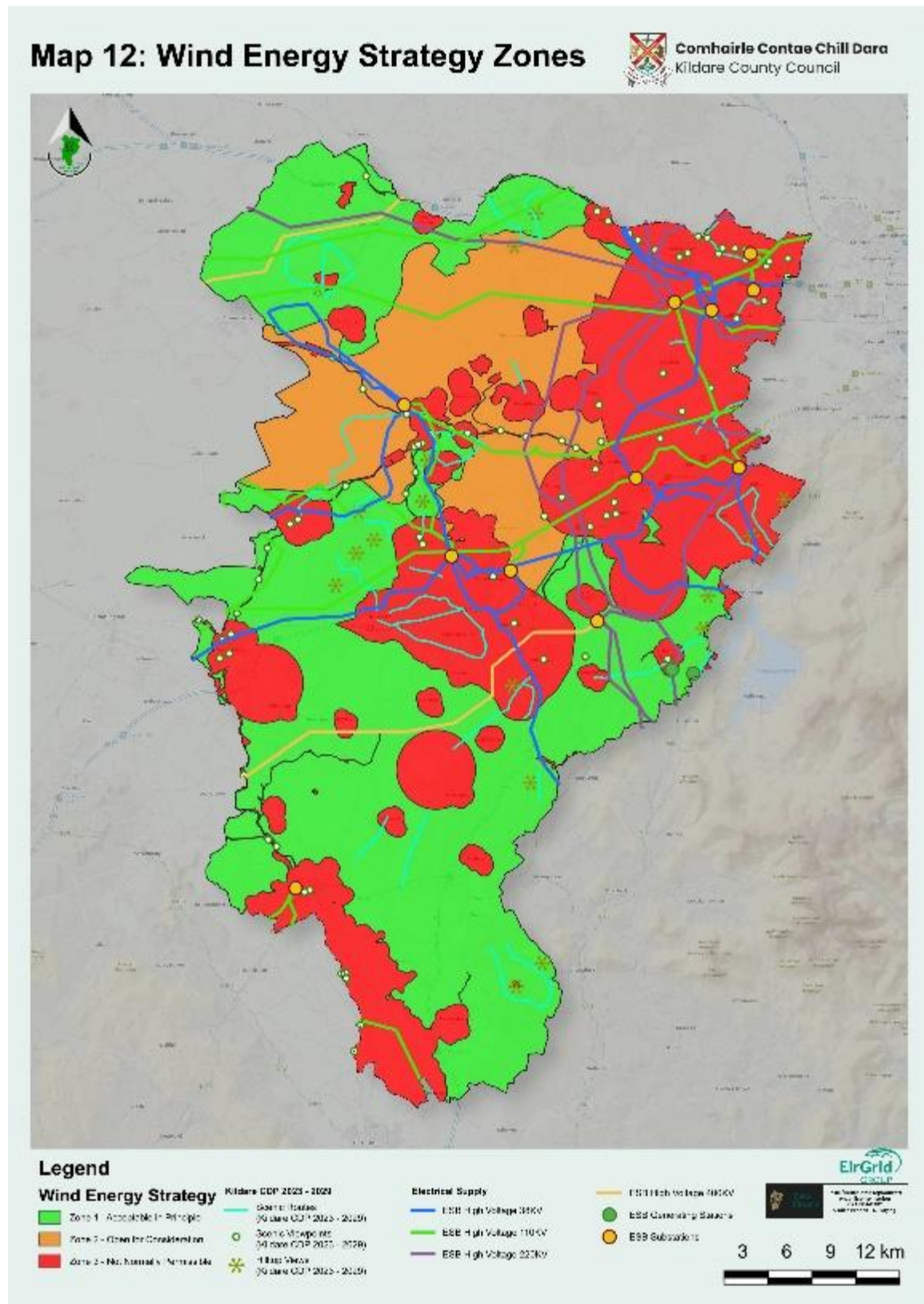
Map 10: Zone 2 – Areas where Windfarms are 'Open for Consideration'.

Replace existing Map 11 in Section 4.5 of the Wind Energy Strategy as follows:



Map 11: Zone 3 – Areas where Windfarms are 'Not Normally Permissible'

Replace existing Map 12 in Section 4.5 of the Wind Energy Strategy as follows:



Map 12: Kildare Wind Energy Strategy Zones