

- LEGEND**
- TREE CONDITION CATEGORIES**
- A TREES OF HIGH VALUE AND QUALITY
 - B TREES OF MODERATE VALUE AND QUALITY
 - C TREES OF LOW QUALITY AND VALUE
 - U TREES OF VERY LOW VALUE AND QUALITY TO BE REMOVED IN THE INTERESTS OF SOUND ARBORICULTURAL MANAGEMENT
- TREE CONSTRAINTS

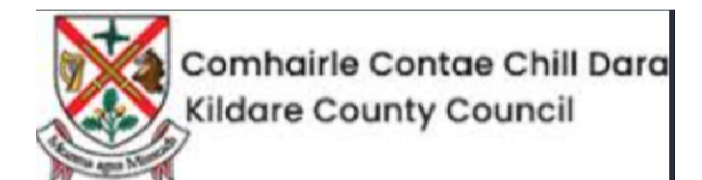
DRAWING TO BE INTERPRETED WITH REFERENCE TO TREE SURVEY DOCUMENT

TREE CONSTRAINTS SHOWN ARE CALCULATED FROM GUIDELINES CONTAINED WITHIN BS5837 (2012) WITH DIMENSIONS CONTAINED WITHIN SECTION 8 OF THE TREE SURVEY DOCUMENT. THIS OUTLINE SHOULD NOT BE INTERPRETED AS THE EXACT EXTENT OF ROOT SPREAD HOWEVER IT IS CONSIDERED THE OPTIMAL AREA TO BE RETAINED FREE OF DEVELOPMENTAL IMPACTS.

NATURAL AND/OR MAN MADE BARRIERS SUCH AS WATERLOGGED SOIL OR BUILDINGS MAY RESTRICT THE SPREAD OF TREE ROOTS. CROWN SPREADS MAY ALSO PROVE TO BE A CONSTRAINT PARTICULARLY WHERE CROWN REDUCTION MAY NOT BE POSSIBLE. THE CONSTRAINTS LINES SHOWN ON THIS DRAWING ARE THEREFORE A GUIDE ONLY. AN ON-SITE ASSESSMENT SHOULD BE UNDERTAKEN IN THE EVENT OF ANY DEVELOPMENTS BEING PLANNED WITHIN THE AREAS SHOWN FOR RETAINED TREES.



AECOM

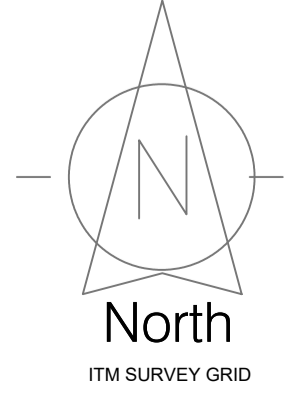


10/05/24	FOR REVIEW AND COMMENT
17/05/24	REVISION 1

PROJECT: WONDERFUL BARN, LEIXLIP	JOB NO. TWN002
DRAWING: TREE SURVEY & CONSTRAINTS (KEYPLAN)	SCALE: 1:1,800 @A1
DRAWN BY: LAUREN M'COLGAN	
STATUS: PLANNING	
DRAWING NO. 101	

NOTES

Do Not Scale. Use Digital Dimensions Only.
Not for Construction. Purposes unless Specifically Noted.
© THIS DRAWING IS COPYRIGHT OF CMK HORTICULTURE & ARBORICULTURE LTD.



CMK
Hort & Arb Ltd.

SECTION 1

RINAWADE LAWNS

HEDGEROW 1





HEDGEROW 2

HEDGEROW 3

BOUNDARY PLANTING

LEGEND

TREE CONDITION CATEGORIES

-  A TREES OF HIGH VALUE AND QUALITY
-  B TREES OF MODERATE VALUE AND QUALITY
-  C TREES OF LOW QUALITY AND VALUE
-  U TREES OF VERY LOW VALUE AND QUALITY TO BE REMOVED IN THE INTERESTS OF SOUND ARBORICULTURAL MANAGEMENT

 TREE CONSTRAINTS

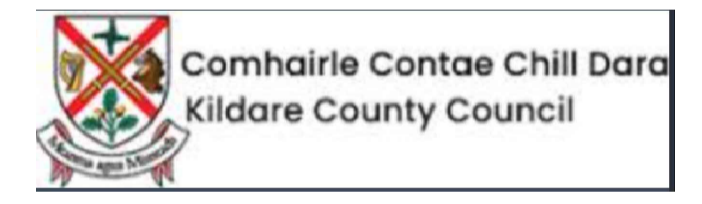
DRAWING TO BE INTERPRETED WITH REFERENCE TO TREE SURVEY DOCUMENT

TREE CONSTRAINTS SHOWN ARE CALCULATED FROM GUIDELINES CONTAINED WITHIN BS5837 (2012) WITH DIMENSIONS CONTAINED WITHIN SECTION 8 OF THE TREE SURVEY DOCUMENT. THIS OUTLINE SHOULD NOT BE INTERPRETED AS THE EXACT EXTENT OF ROOT SPREAD HOWEVER IT IS CONSIDERED THE OPTIMAL AREA TO BE RETAINED FREE OF DEVELOPMENTAL IMPACTS.

NATURAL AND/OR MAN MADE BARRIERS SUCH AS WATERLOGGED SOIL OR BUILDINGS MAY RESTRICT THE SPREAD OF TREE ROOTS. CROWN SPREADS MAY ALSO PROVE TO BE A CONSTRAINT PARTICULARLY WHERE CROWN REDUCTION MAY NOT BE POSSIBLE. THE CONSTRAINTS LINES SHOWN ON THIS DRAWING ARE THEREFORE A GUIDE ONLY. AN ON-SITE ASSESSMENT SHOULD BE UNDERTAKEN IN THE EVENT OF ANY DEVELOPMENTS BEING PLANNED WITHIN THE AREAS SHOWN FOR RETAINED TREES.



AECOM

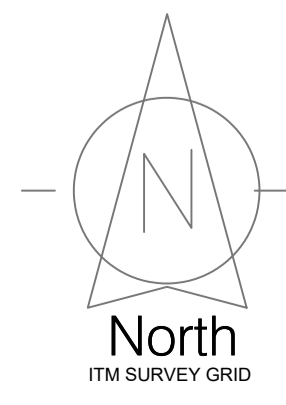


10/05/24	FOR REVIEW AND COMMENT
17/05/24	REVISION 1

PROJECT: WONDERFUL BARN, LEIXLIP	JOB NO. TWN002
DRAWING: TREE SURVEY & CONSTRAINTS SECTION 1	SCALE: 1:500 @A1
DRAWN BY: LAUREN M'COLGAN	
STATUS: PLANNING	
DRAWING NO. 102	






NOTES

On the Basis: See signed Statements Only
Not for Construction: Purposes unless Specifically Noted.
© THIS DRAWING IS COPYRIGHT OF CMK HORTICULTURE & ARBORICULTURE LTD.



CMK
Hort & Arb Ltd.

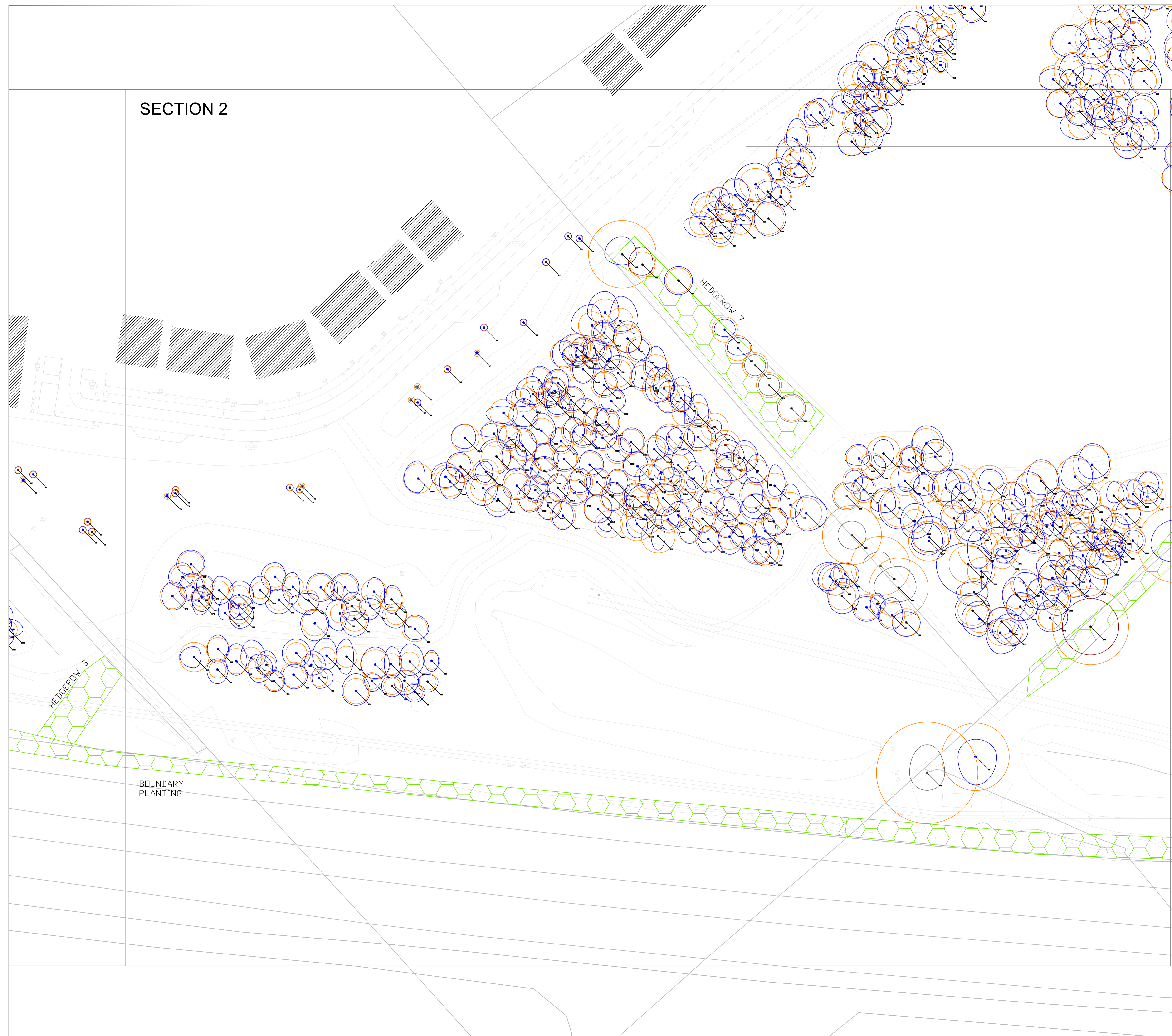
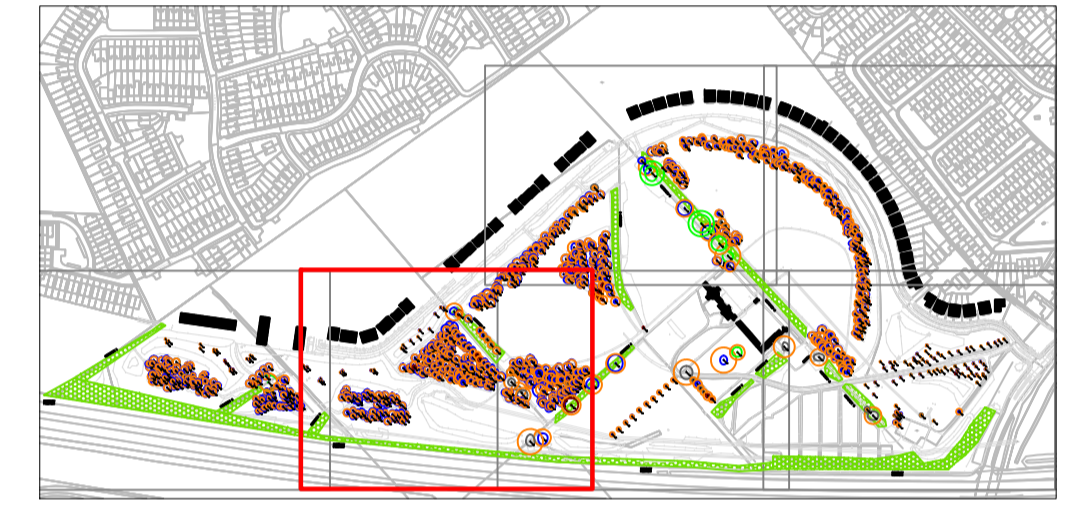
SECTION 2

- LEGEND**
- TREE CONDITION CATEGORIES**
-  A TREES OF HIGH VALUE AND QUALITY
 -  B TREES OF MODERATE VALUE AND QUALITY
 -  C TREES OF LOW QUALITY AND VALUE
 -  U TREES OF VERY LOW VALUE AND QUALITY TO BE REMOVED IN THE INTERESTS OF SOUND ARBORICULTURAL MANAGEMENT
-  TREE CONSTRAINTS

DRAWING TO BE INTERPRETED WITH REFERENCE TO TREE SURVEY DOCUMENT

TREE CONSTRAINTS SHOWN ARE CALCULATED FROM GUIDELINES CONTAINED WITHIN BS5837 (2012) WITH DIMENSIONS CONTAINED WITHIN SECTION 8 OF THE TREE SURVEY DOCUMENT. THIS OUTLINE SHOULD NOT BE INTERPRETED AS THE EXACT EXTENT OF ROOT SPREAD HOWEVER IT IS CONSIDERED THE OPTIMAL AREA TO BE RETAINED FREE OF DEVELOPMENTAL IMPACTS.

NATURAL AND/OR MAN MADE BARRIERS SUCH AS WATERLOGGED SOIL OR BUILDINGS MAY RESTRICT THE SPREAD OF TREE ROOTS. CROWN SPREADS MAY ALSO PROVE TO BE A CONSTRAINT PARTICULARLY WHERE CROWN REDUCTION MAY NOT BE POSSIBLE. THE CONSTRAINTS LINES SHOWN ON THIS DRAWING ARE THEREFORE A GUIDE ONLY. AN ON-SITE ASSESSMENT SHOULD BE UNDERTAKEN IN THE EVENT OF ANY DEVELOPMENTS BEING PLANNED WITHIN THE AREAS SHOWN FOR RETAINED TREES.



AECOM

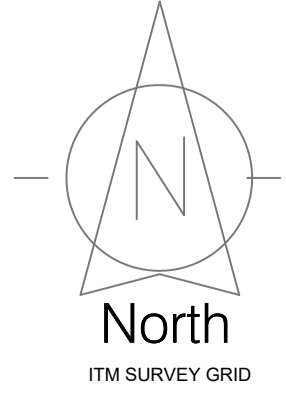


10/05/24	FOR REVIEW AND COMMENT
17/05/24	REVISION 1

PROJECT: WONDERFUL BARN, LEIXLIP	JOB NO. TWN002
DRAWING: TREE SURVEY & CONSTRAINTS SECTION 2	SCALE: 1:500 @A1
DRAWN BY: LAUREN M'COLGAN	
STATUS: PLANNING	
DRAWING NO. 103	

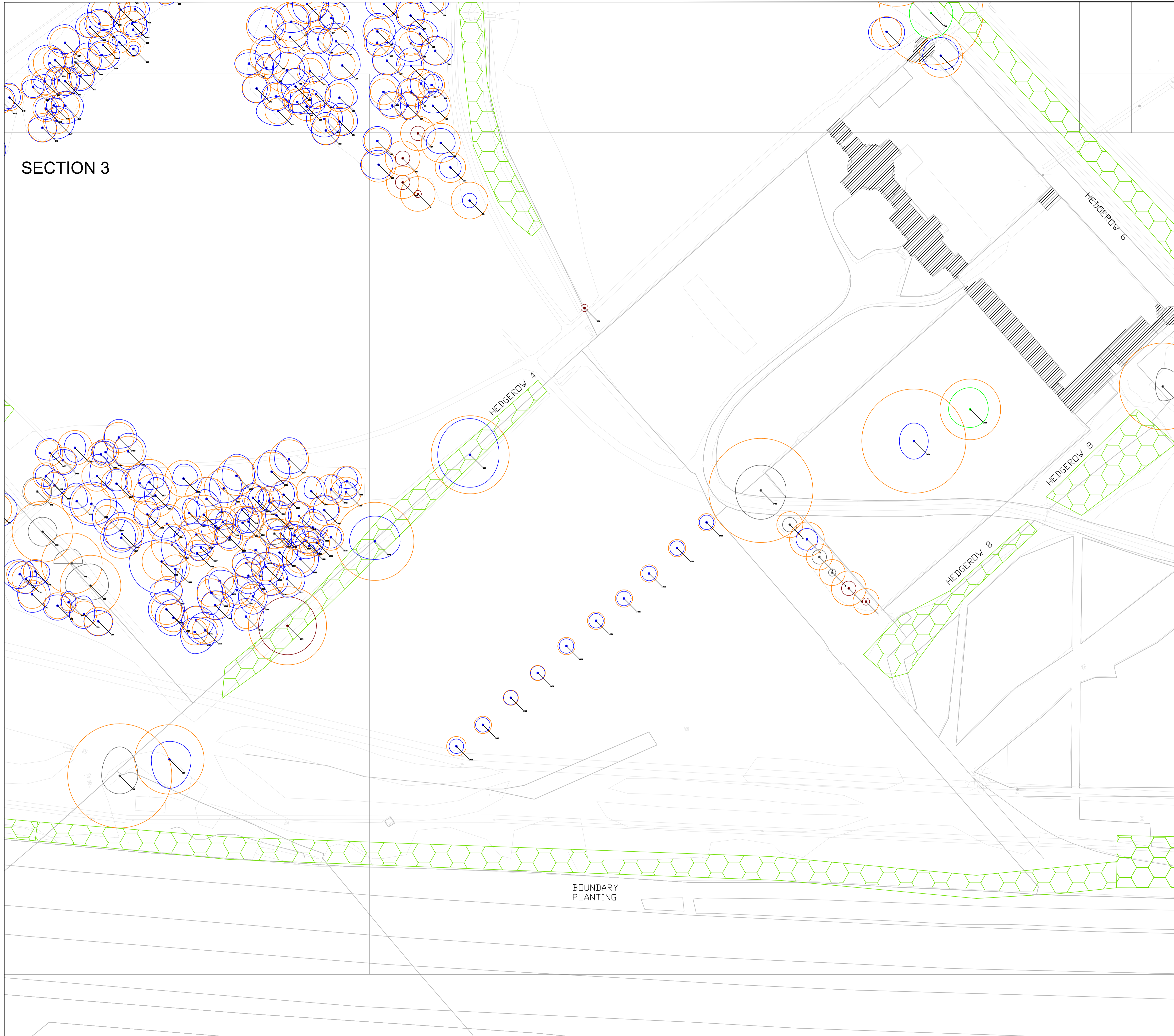
NOTES

On-Site: See Digital Drawings (D3)
Not for Construction: Purposes unless Specifically Noted.
© THIS DRAWING IS COPYRIGHT OF CMK HORTICULTURE & ARBORICULTURE LTD.



CMK
Hort & Arb Ltd.

SECTION 3



- LEGEND**
- TREE CONDITION CATEGORIES**
- A TREES OF HIGH VALUE AND QUALITY
 - B TREES OF MODERATE VALUE AND QUALITY
 - C TREES OF LOW QUALITY AND VALUE
 - U TREES OF VERY LOW VALUE AND QUALITY TO BE REMOVED IN THE INTERESTS OF SOUND ARBORICULTURAL MANAGEMENT
- TREE CONSTRAINTS

DRAWING TO BE INTERPRETED WITH REFERENCE TO TREE SURVEY DOCUMENT

TREE CONSTRAINTS SHOWN ARE CALCULATED FROM GUIDELINES CONTAINED WITHIN BS5837 (2012) WITH DIMENSIONS CONTAINED WITHIN SECTION 8 OF THE TREE SURVEY DOCUMENT. THIS OUTLINE SHOULD NOT BE INTERPRETED AS THE EXACT EXTENT OF ROOT SPREAD HOWEVER IT IS CONSIDERED THE OPTIMAL AREA TO BE RETAINED FREE OF DEVELOPMENTAL IMPACTS.

NATURAL AND/OR MAN MADE BARRIERS SUCH AS WATERLOGGED SOIL OR BUILDINGS MAY RESTRICT THE SPREAD OF TREE ROOTS. CROWN SPREADS MAY ALSO PROVE TO BE A CONSTRAINT PARTICULARLY WHERE CROWN REDUCTION MAY NOT BE POSSIBLE. THE CONSTRAINTS LINES SHOWN ON THIS DRAWING ARE THEREFORE A GUIDE ONLY. AN ON-SITE ASSESSMENT SHOULD BE UNDERTAKEN IN THE EVENT OF ANY DEVELOPMENTS BEING PLANNED WITHIN THE AREAS SHOWN FOR RETAINED TREES.



AECOM



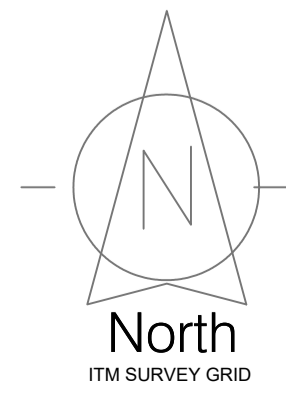
10/05/24	FOR REVIEW AND COMMENT
17/05/24	REVISION 1

PROJECT: WONDERFUL BARN, LEIXLIP	JOB NO. TWN002
-------------------------------------	-------------------

DRAWING: TREE SURVEY & CONSTRAINTS SECTION 3	SCALE: 1:500 @A1
---	---------------------

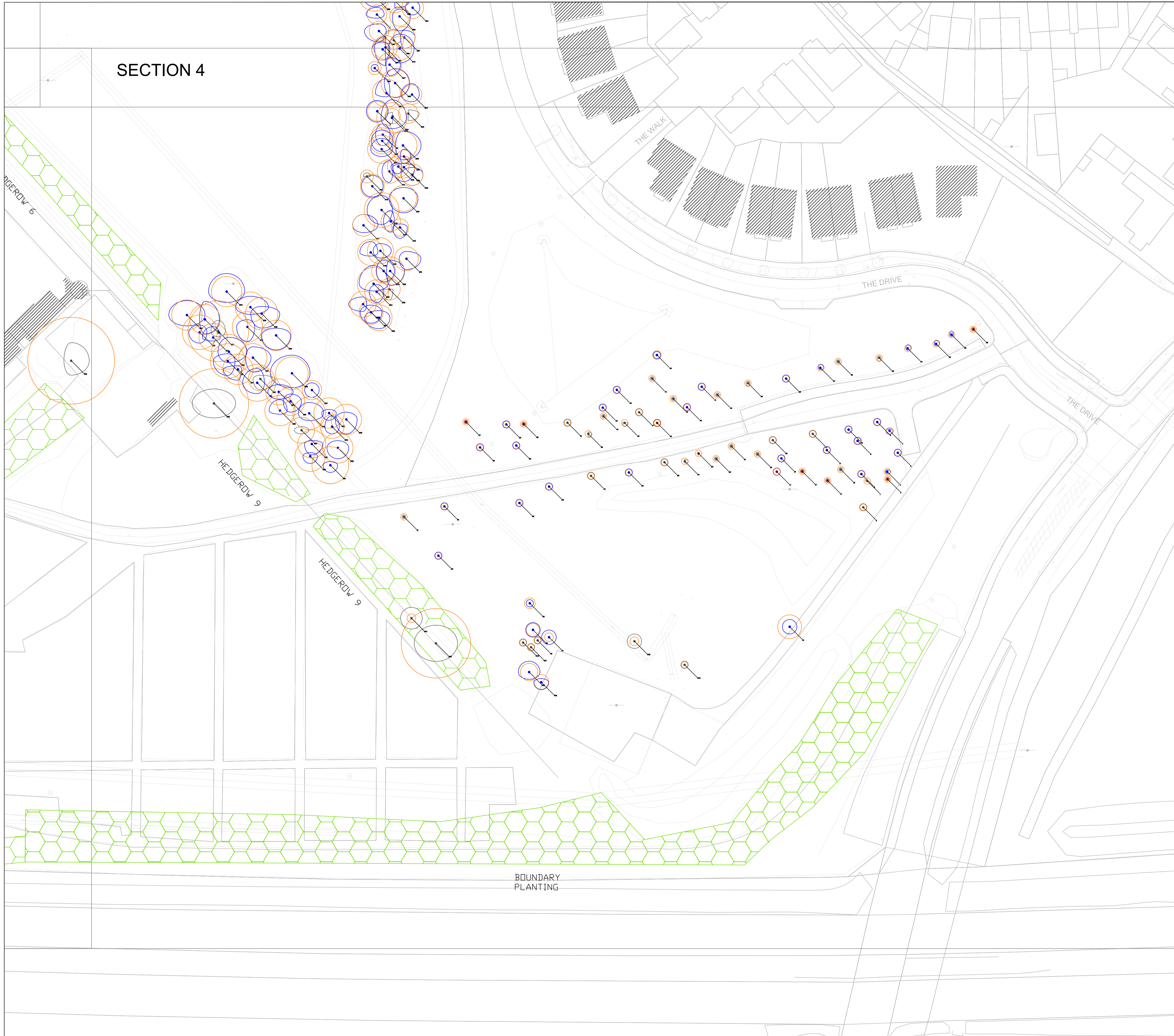
DRAWN BY: LAUREN M'COLGAN
STATUS: PLANNING
DRAWING NO. 104

NOTES
On this sheet, the digital elements only.
Not for construction. Purposes unless specifically stated.
© THIS DRAWING IS COPYRIGHT OF CMK HORTICULTURE & ARBORICULTURE LTD.



CMK
Hort & Arb Ltd.

SECTION 4



- LEGEND**
- TREE CONDITION CATEGORIES**
- A TREES OF HIGH VALUE AND QUALITY
 - B TREES OF MODERATE VALUE AND QUALITY
 - C TREES OF LOW QUALITY AND VALUE
 - U TREES OF VERY LOW VALUE AND QUALITY TO BE REMOVED IN THE INTERESTS OF SOUND ARBORICULTURAL MANAGEMENT
- TREE CONSTRAINTS

DRAWING TO BE INTERPRETED WITH REFERENCE TO TREE SURVEY DOCUMENT

TREE CONSTRAINTS SHOWN ARE CALCULATED FROM GUIDELINES CONTAINED WITHIN BS5837 (2012) WITH DIMENSIONS CONTAINED WITHIN SECTION 8 OF THE TREE SURVEY DOCUMENT. THIS OUTLINE SHOULD NOT BE INTERPRETED AS THE EXACT EXTENT OF ROOT SPREAD HOWEVER IT IS CONSIDERED THE OPTIMAL AREA TO BE RETAINED FREE OF DEVELOPMENTAL IMPACTS.

NATURAL AND/OR MAN MADE BARRIERS SUCH AS WATERLOGGED SOIL OR BUILDINGS MAY RESTRICT THE SPREAD OF TREE ROOTS. CROWN SPREADS MAY ALSO PROVE TO BE A CONSTRAINT PARTICULARLY WHERE CROWN REDUCTION MAY NOT BE POSSIBLE. THE CONSTRAINTS LINES SHOWN ON THIS DRAWING ARE THEREFORE A GUIDE ONLY. AN ON-SITE ASSESSMENT SHOULD BE UNDERTAKEN IN THE EVENT OF ANY DEVELOPMENTS BEING PLANNED WITHIN THE AREAS SHOWN FOR RETAINED TREES.



AECOM



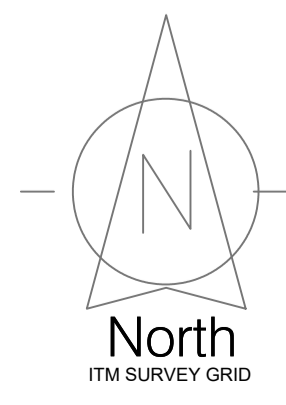
10/05/24	FOR REVIEW AND COMMENT
17/05/24	REVISION 1

PROJECT: WONDERFUL BARN, LEIXLIP	JOB NO. TWN002
DRAWING: TREE SURVEY & CONSTRAINTS SECTION 4	SCALE: 1:500 @A1
DRAWN BY: LAUREN M'COLGAN	
STATUS: PLANNING	
DRAWING NO. 105	

NOTES

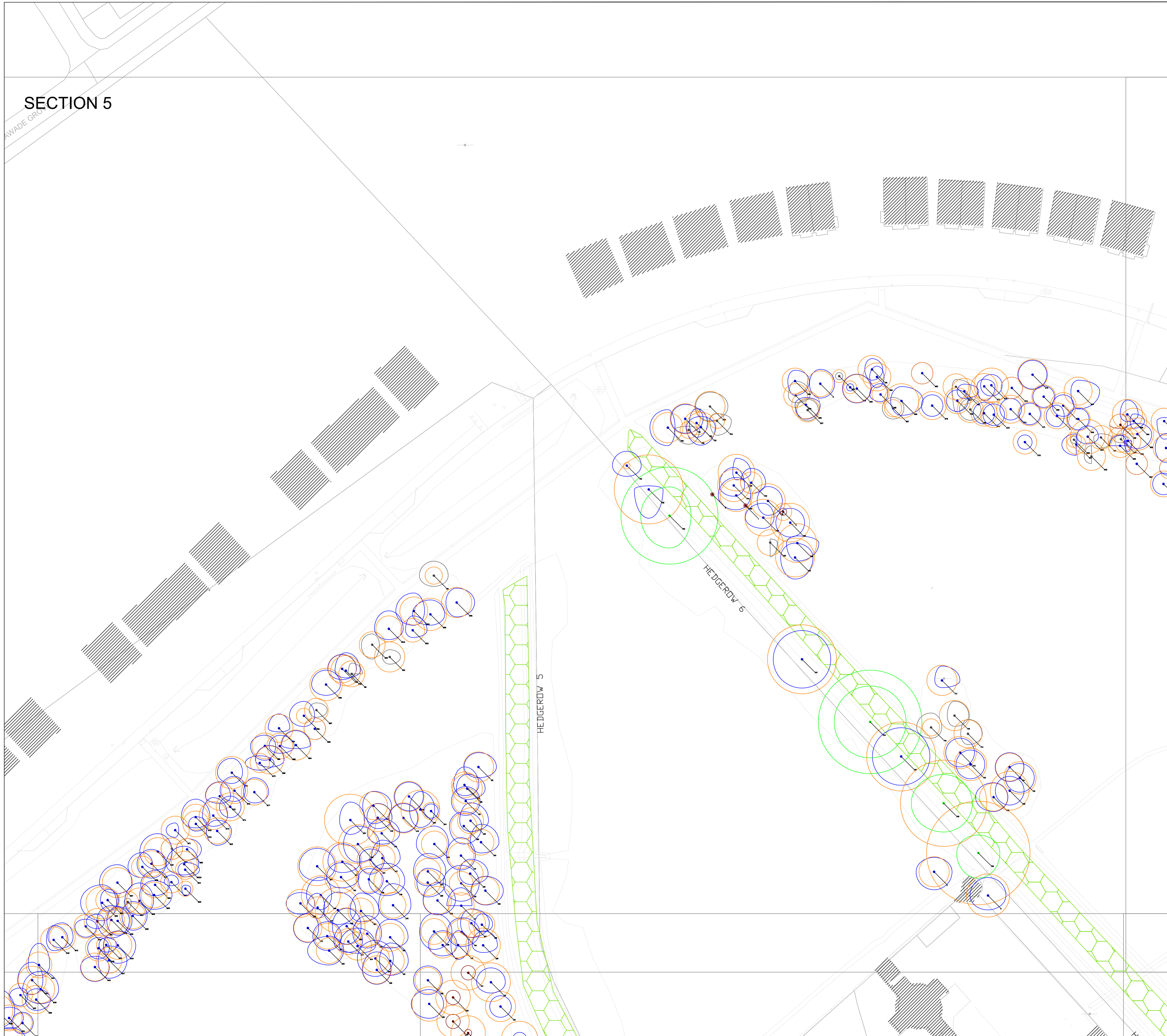
On-Site: Use Digital Dimensions Only
Not for Construction - Purposes unless Specifically Noted.

© THIS DRAWING IS COPYRIGHT OF CMK HORTICULTURE & ARBORICULTURE LTD.



CMK
Hort & Arb Ltd.

SECTION 5

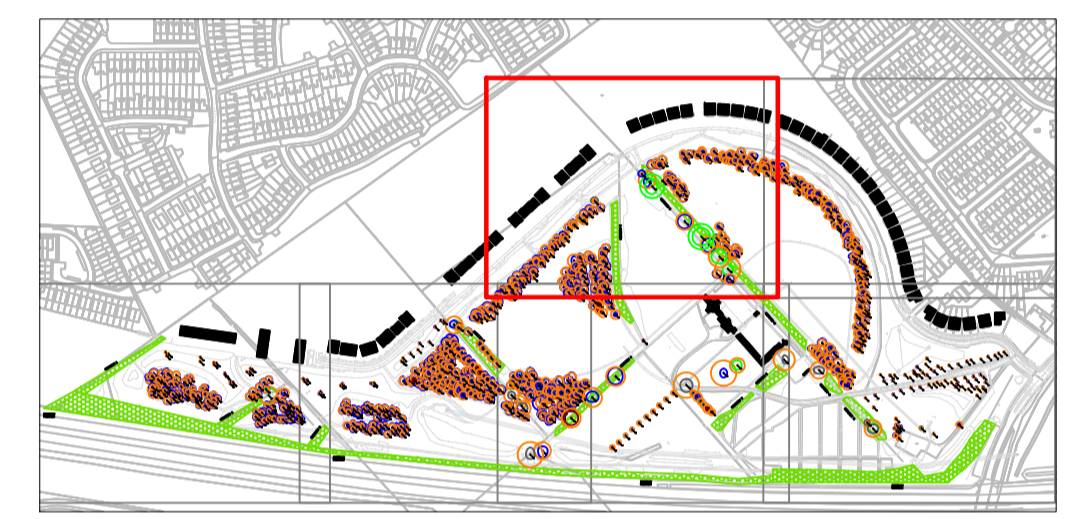


- LEGEND**
- TREE CONDITION CATEGORIES**
- A TREES OF HIGH VALUE AND QUALITY
 - B TREES OF MODERATE VALUE AND QUALITY
 - C TREES OF LOW QUALITY AND VALUE
 - U TREES OF VERY LOW VALUE AND QUALITY TO BE REMOVED IN THE INTERESTS OF SOUND ARBORICULTURAL MANAGEMENT
- TREE CONSTRAINTS

DRAWING TO BE INTERPRETED WITH REFERENCE TO TREE SURVEY DOCUMENT

TREE CONSTRAINTS SHOWN ARE CALCULATED FROM GUIDELINES CONTAINED WITHIN BS5837 (2012) WITH DIMENSIONS CONTAINED WITHIN SECTION 8 OF THE TREE SURVEY DOCUMENT. THIS OUTLINE SHOULD NOT BE INTERPRETED AS THE EXACT EXTENT OF ROOT SPREAD HOWEVER IT IS CONSIDERED THE OPTIMAL AREA TO BE RETAINED FREE OF DEVELOPMENTAL IMPACTS.

NATURAL AND/OR MAN MADE BARRIERS SUCH AS WATERLOGGED SOIL OR BUILDINGS MAY RESTRICT THE SPREAD OF TREE ROOTS. CROWN SPREADS MAY ALSO PROVE TO BE A CONSTRAINT PARTICULARLY WHERE CROWN REDUCTION MAY NOT BE POSSIBLE. THE CONSTRAINTS LINES SHOWN ON THIS DRAWING ARE THEREFORE A GUIDE ONLY. AN ON-SITE ASSESSMENT SHOULD BE UNDERTAKEN IN THE EVENT OF ANY DEVELOPMENTS BEING PLANNED WITHIN THE AREAS SHOWN FOR RETAINED TREES.



AECOM

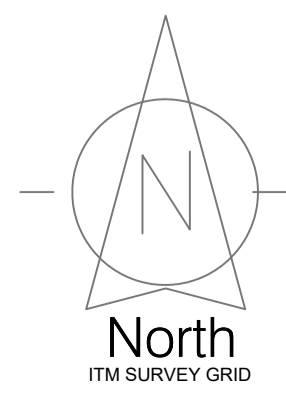


10/05/24	FOR REVIEW AND COMMENT
17/05/24	REVISION 1

PROJECT: WONDERFUL BARN, LEIXLIP	JOB NO. TWN002
DRAWING: TREE SURVEY & CONSTRAINTS SECTION 5	SCALE: 1:500 @A1
DRAWN BY: LAUREN M'COLGAN	
STATUS: PLANNING	
DRAWING NO. 106	






NOTES

Do Not Scale. Use Digital Dimensions Only.
Not for Construction. Purposes unless Specifically Noted.
© THIS DRAWING IS COPYRIGHT OF CMK HORTICULTURE & ARBORICULTURE LTD.



CMK
Hort & Arb Ltd.

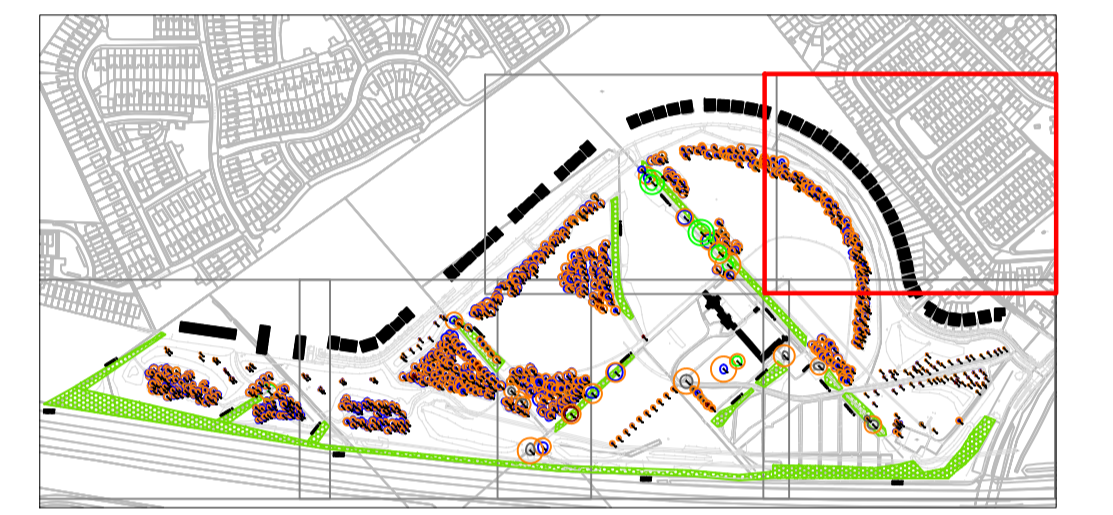
SECTION 6

- LEGEND**
- TREE CONDITION CATEGORIES**
-  A TREES OF HIGH VALUE AND QUALITY
 -  B TREES OF MODERATE VALUE AND QUALITY
 -  C TREES OF LOW QUALITY AND VALUE
 -  U TREES OF VERY LOW VALUE AND QUALITY TO BE REMOVED IN THE INTERESTS OF SOUND ARBORICULTURAL MANAGEMENT
-  TREE CONSTRAINTS

DRAWING TO BE INTERPRETED WITH REFERENCE TO TREE SURVEY DOCUMENT

TREE CONSTRAINTS SHOWN ARE CALCULATED FROM GUIDELINES CONTAINED WITHIN BS5837 (2012) WITH DIMENSIONS CONTAINED WITHIN SECTION 8 OF THE TREE SURVEY DOCUMENT. THIS OUTLINE SHOULD NOT BE INTERPRETED AS THE EXACT EXTENT OF ROOT SPREAD HOWEVER IT IS CONSIDERED THE OPTIMAL AREA TO BE RETAINED FREE OF DEVELOPMENTAL IMPACTS.

NATURAL AND/OR MAN MADE BARRIERS SUCH AS WATERLOGGED SOIL OR BUILDINGS MAY RESTRICT THE SPREAD OF TREE ROOTS. CROWN SPREADS MAY ALSO PROVE TO BE A CONSTRAINT PARTICULARLY WHERE CROWN REDUCTION MAY NOT BE POSSIBLE. THE CONSTRAINTS LINES SHOWN ON THIS DRAWING ARE THEREFORE A GUIDE ONLY. AN ON-SITE ASSESSMENT SHOULD BE UNDERTAKEN IN THE EVENT OF ANY DEVELOPMENTS BEING PLANNED WITHIN THE AREAS SHOWN FOR RETAINED TREES.



AECOM

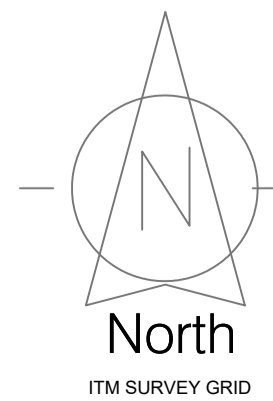


10/05/24	FOR REVIEW AND COMMENT
17/05/24	REVISION 1

PROJECT: WONDERFUL BARN, LEIXLIP	JOB NO. TWN002
DRAWING: TREE SURVEY & CONSTRAINTS SECTION 6	SCALE: 1:500 @A1
DRAWN BY: LAUREN MCCOLGAN	DATE: 17/05/24
STATUS: PLANNING	
DRAWING NO. 107	

NOTES

© All Rights Reserved. All Rights Reserved. This Drawing is Copyright of CMK Horticulture & Arboriculture Ltd.



CMK
Hort & Arb Ltd.

