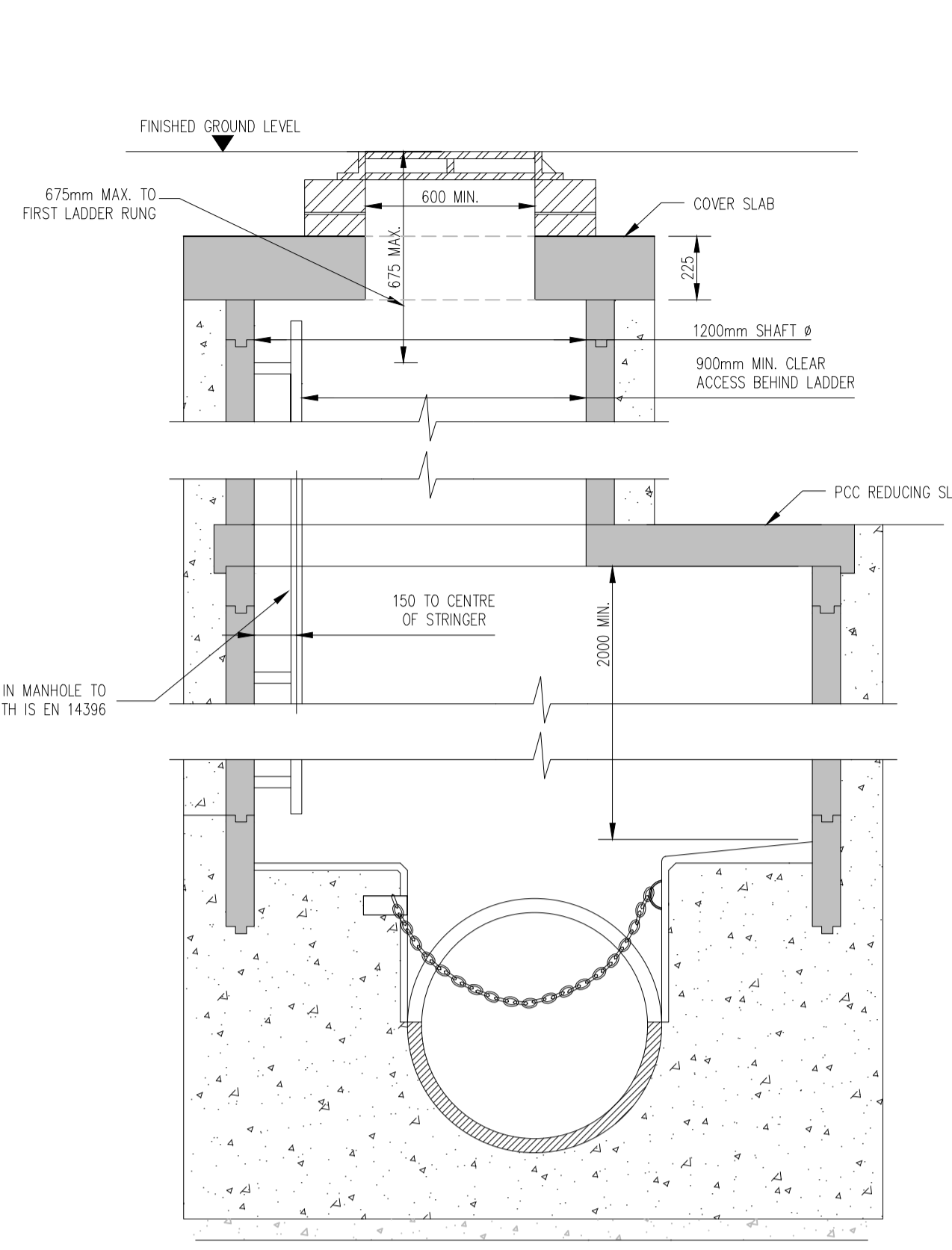
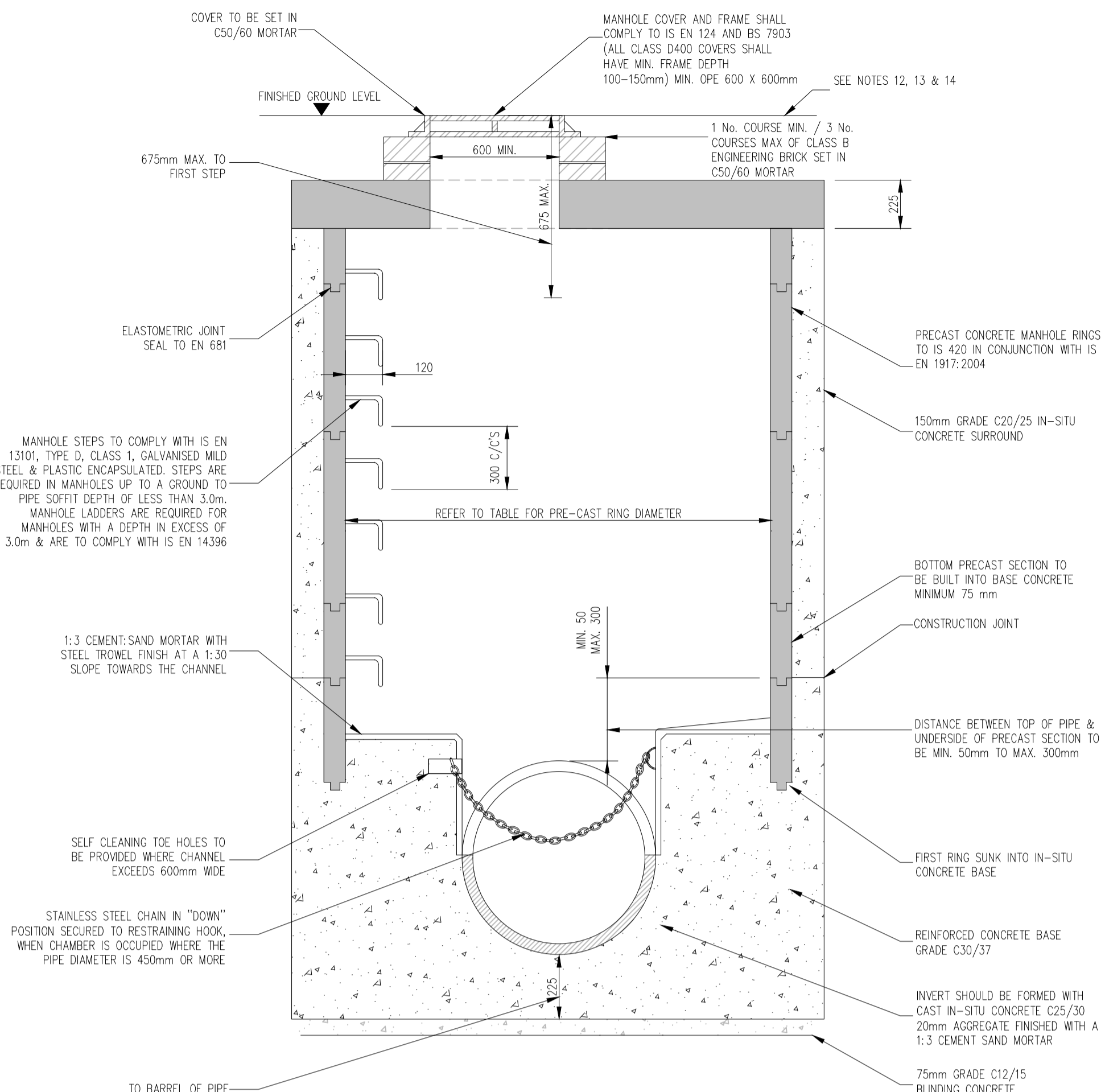


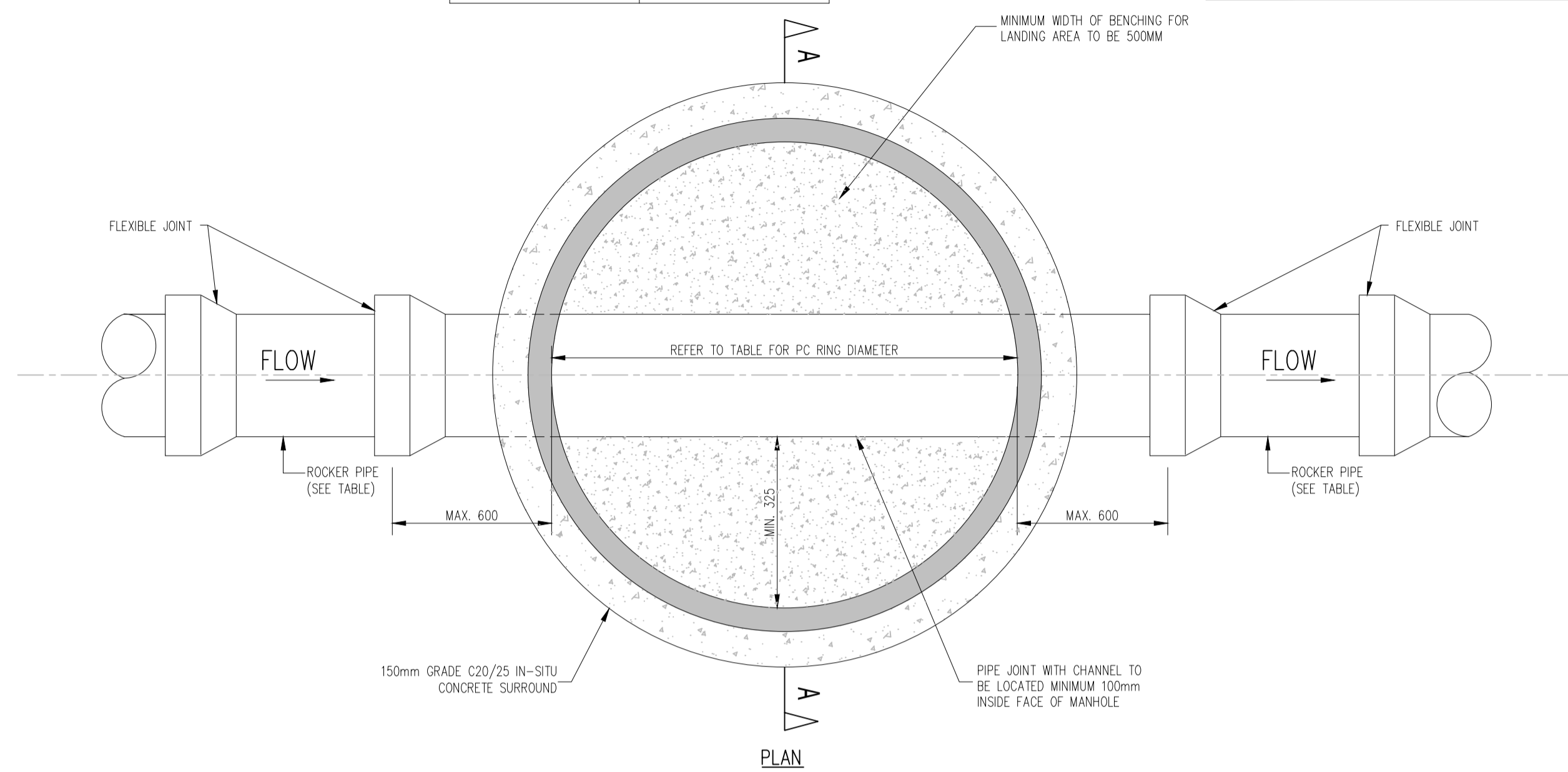
NOTES	
GENERAL	
1.) THESE DRAWINGS TO BE READ IN CONJUNCTION WITH ALL RELEVANT HAYES HIGGINS ENGINEERING DRAWINGS AND SPECIFICATIONS.	
2.) DO NOT SCALE. USE FIGURED DIMENSIONS ONLY.	
3.) FOUL WATER/WASTE WATER TO CURRENT IRISH WATER SPECIFICATION AND DETAILS (W-CDS-5030-01).	

ROCKER PIPE LENGTH	
PIPE DIAMETER (mm)	ROCKER PIPE LENGTH (mm)
150 - 600	600
> 600 - 750	1000
> 750	1250

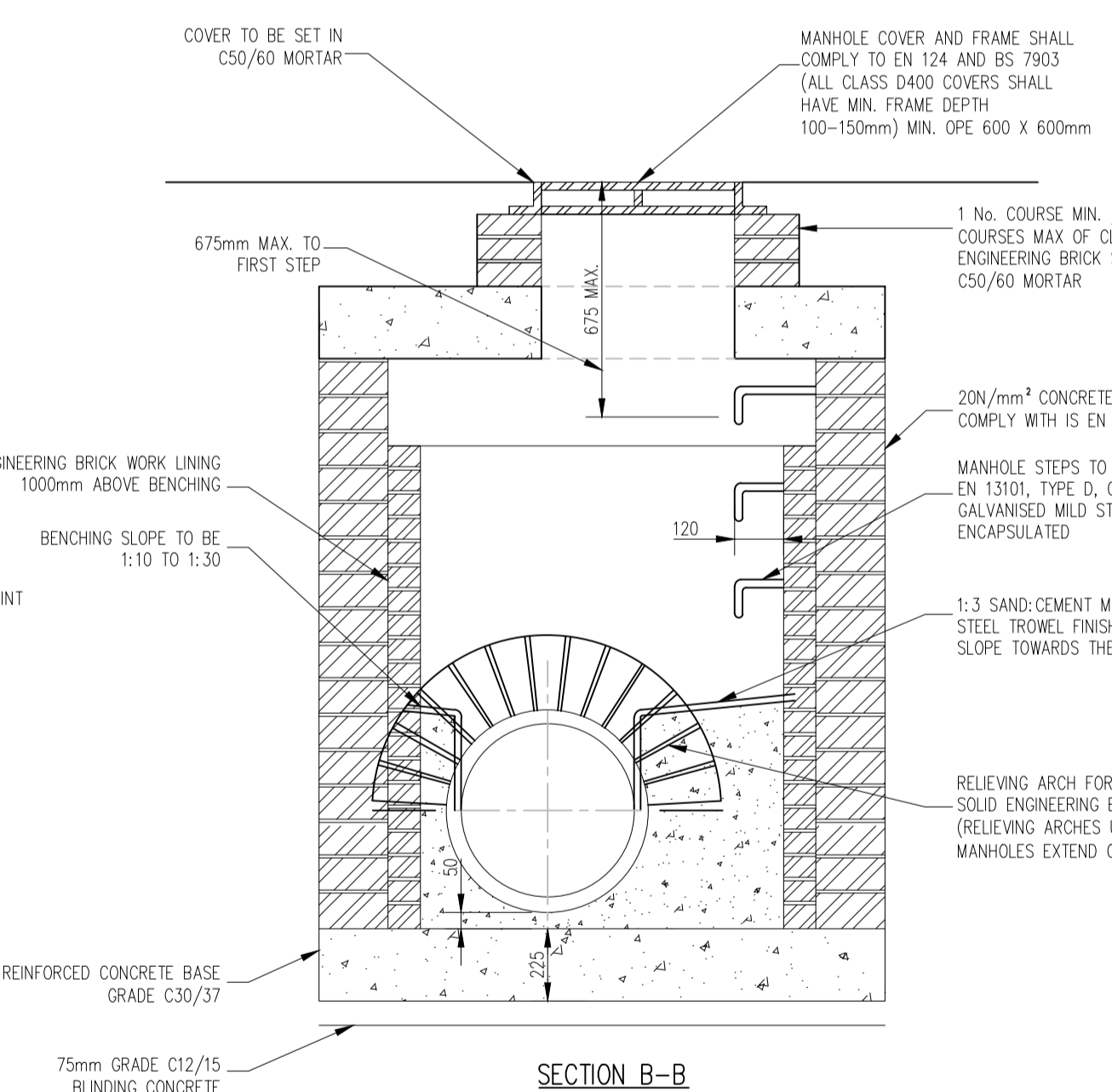
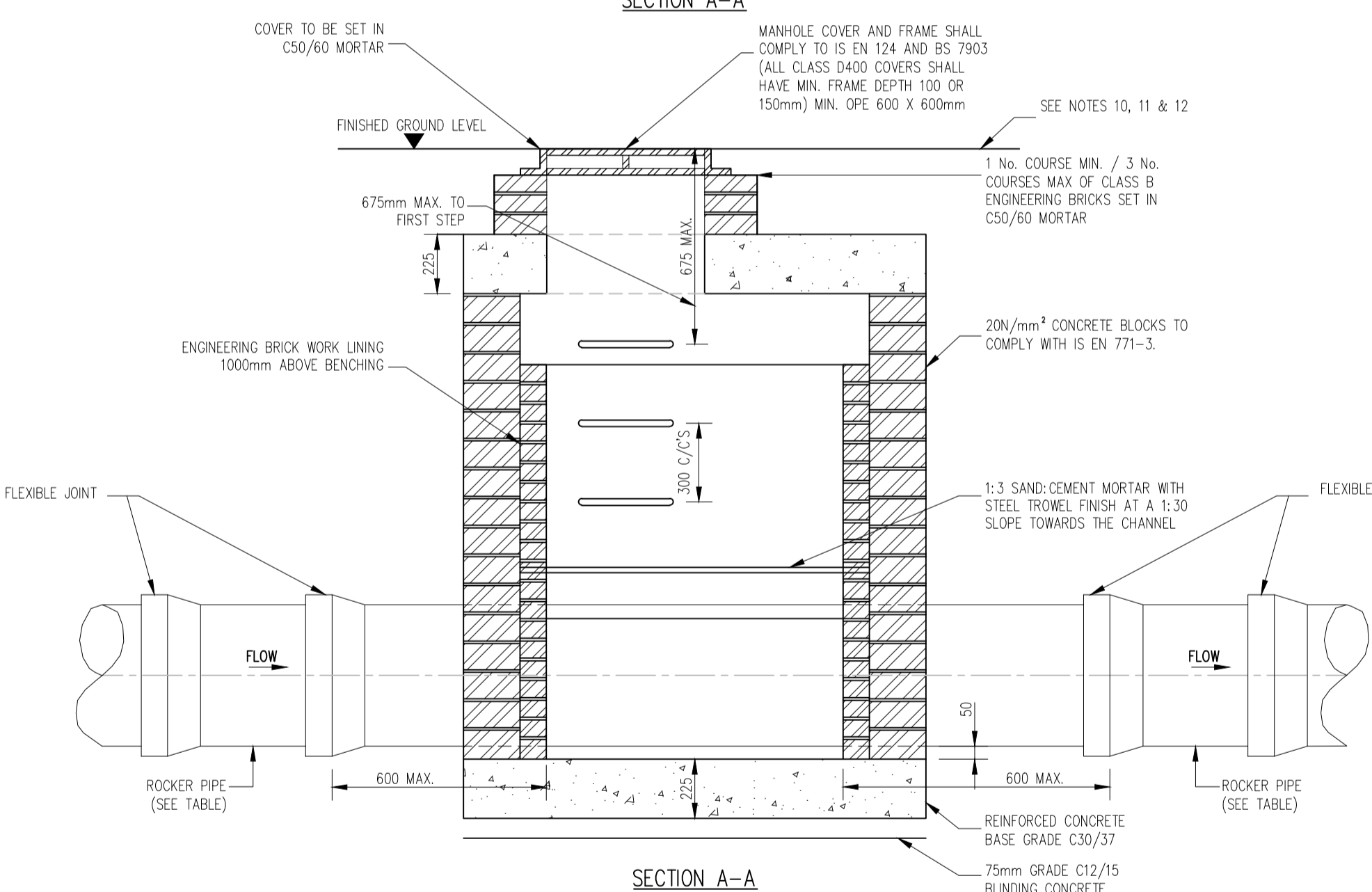
MINIMUM MANHOLE DIAMETERS	
DIAMETER OF LARGEST PIPE IN MANHOLE (mm)	INTERNAL DIAMETER OF MANHOLE (mm)
< 375	1200
375 TO 450	1350
500 TO 750	1500



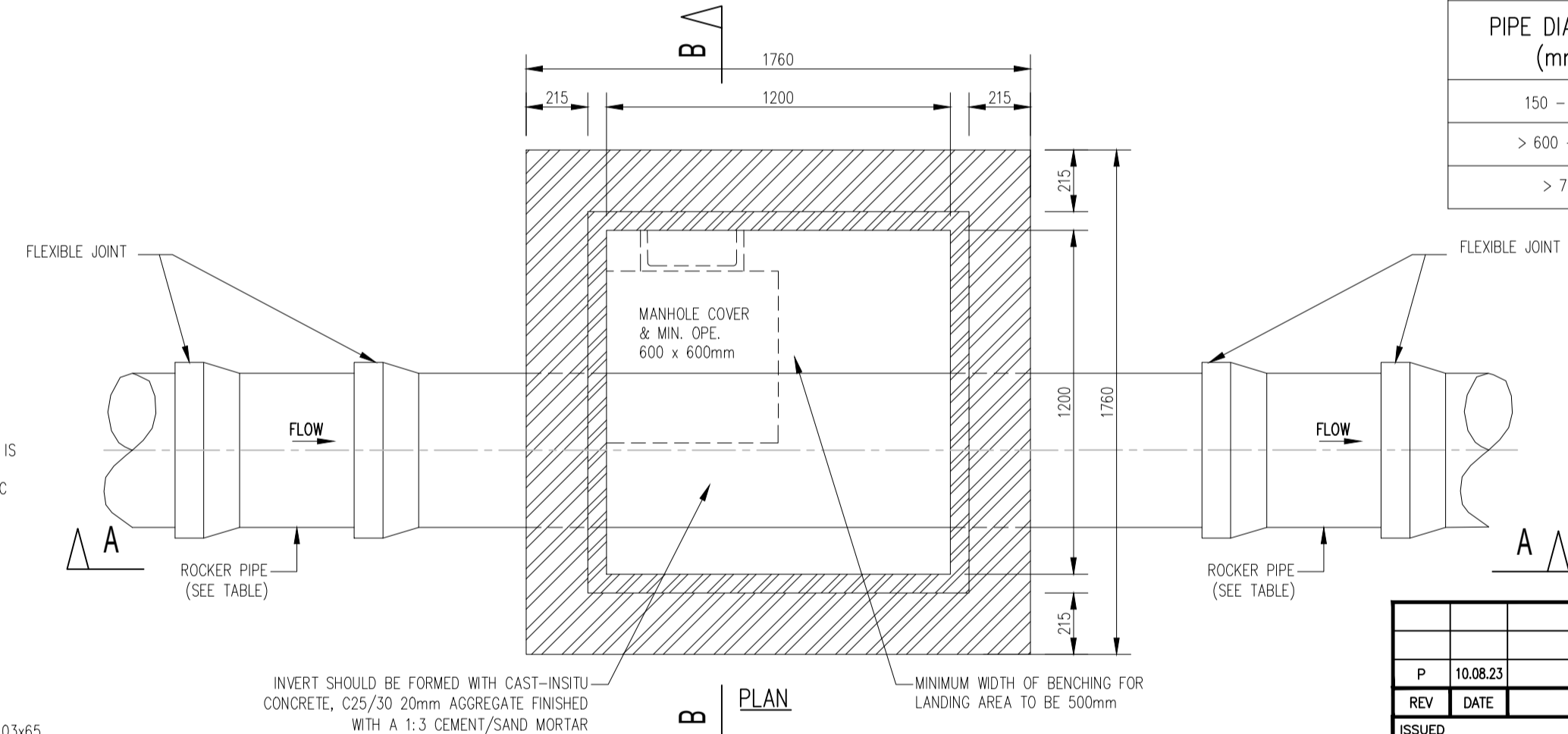
MANHOLE DETAIL > 3m & < 6m GROUND TO SOFFIT DEPTH
(NOTE: ON MANHOLES < 1.5m, REDUCING SLAB NOT TO BE USED & PCC TO CONTINUE UP TO COVER SLAB)



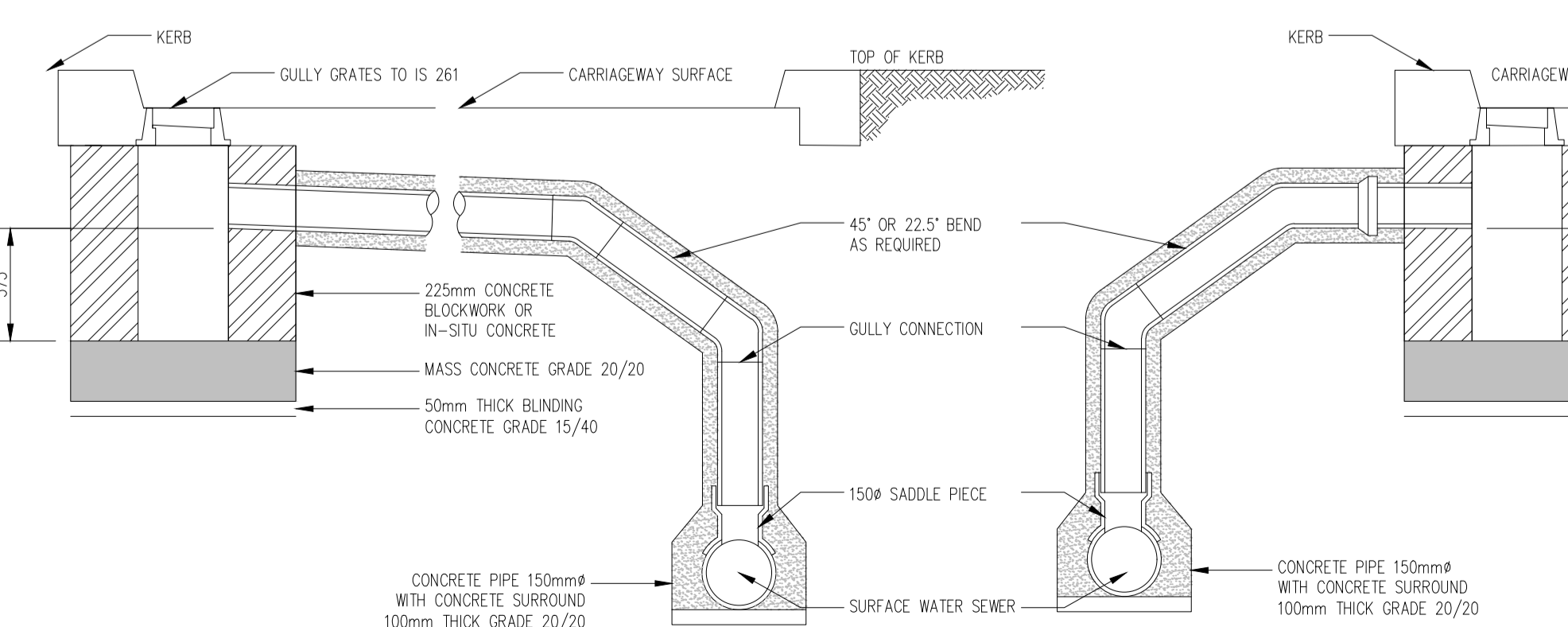
DETAIL 08 - PRE-CAST CONCRETE MANHOLE



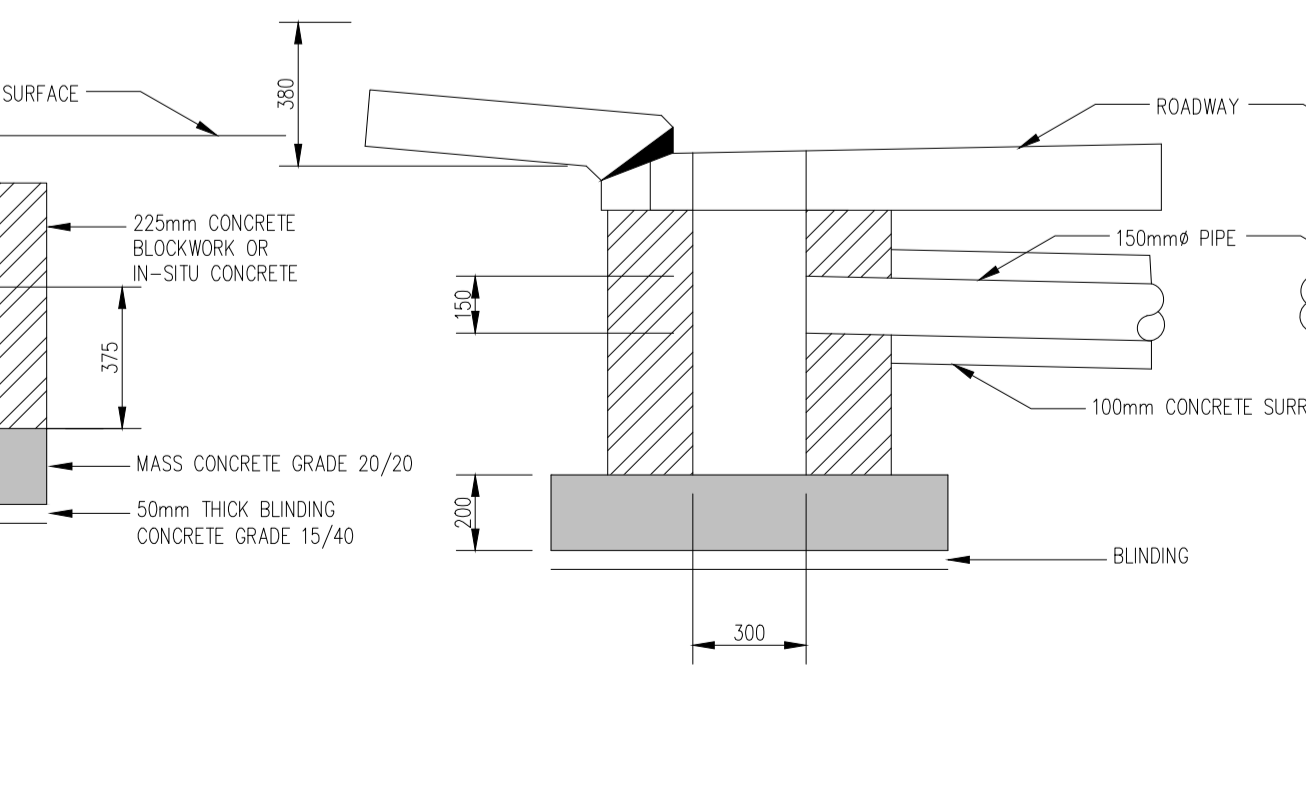
ROCKER PIPE LENGTH	
PIPE DIAMETER (mm)	ROCKER PIPE LENGTH (mm)
150 - 600	600
> 600 - 750	1000
> 750	1250



DETAIL 07 - BLOCKWORK MANHOLE (< 450Ø)



GULLY PIT TO SW SEWER ON OPPOSITE SIDE OF CARRIAGEWAY



GULLY PIT TO SW SEWER ON SAME SIDE OF CARRIAGEWAY

GULLY CONNECTION TO SW SEWER ACROSS ROADWAY

ISSUED	PLANNING	FS	LM
P	10.08.23	ISSUED FOR PLANNING	FS LM
REV	DATE	DESCRIPTION	DWG BY APPR BY
ISSUED			
PLANNING			
CLIENT			
SOPHIA HOUSING			
PROJECT NAME			
ST JOHN'S CONVENT RATHANGAN			
DRAWING NAME			
IRISH WATER FOUL & SURFACE DRAINAGE DETAILS SHEET 2 OF 4			
PROJECT No.			
20D004			
DRAWING No.		REVISION	
03B		P	
SCALE		DRAWN DATE	
AS SHOWN		10.08.23	
CAD DRAWN BY		CHECKED BY	
F.S.		L.M.	
		APPROVED BY	
		D.H.	
HAYES HIGGINS PARTNERSHIP The Glass House, 11 Coke Lane Smithfield, Dublin 7. Tel: 01 6612321 E-mail: admin@hayeshiggins.ie Gas House Lane, Kilkenny. Tel: (056) 7764710 Email: info@hhp.ie			