

GENERAL NOTES

DO NOT SCALE FROM DRAWINGS. WORK TO FIGURED DIMENSIONS ONLY. ARCHITECT TO BE NOTIFIED OF ANY DISCREPANCIES.

THIS DRAWING TO BE READ IN CONJUNCTION WITH ALL ARCHITECT'S DRAWINGS, SPECIFICATIONS CONSULTANTS DESIGN TEAM DRAWINGS AND SPECIFICATIONS.



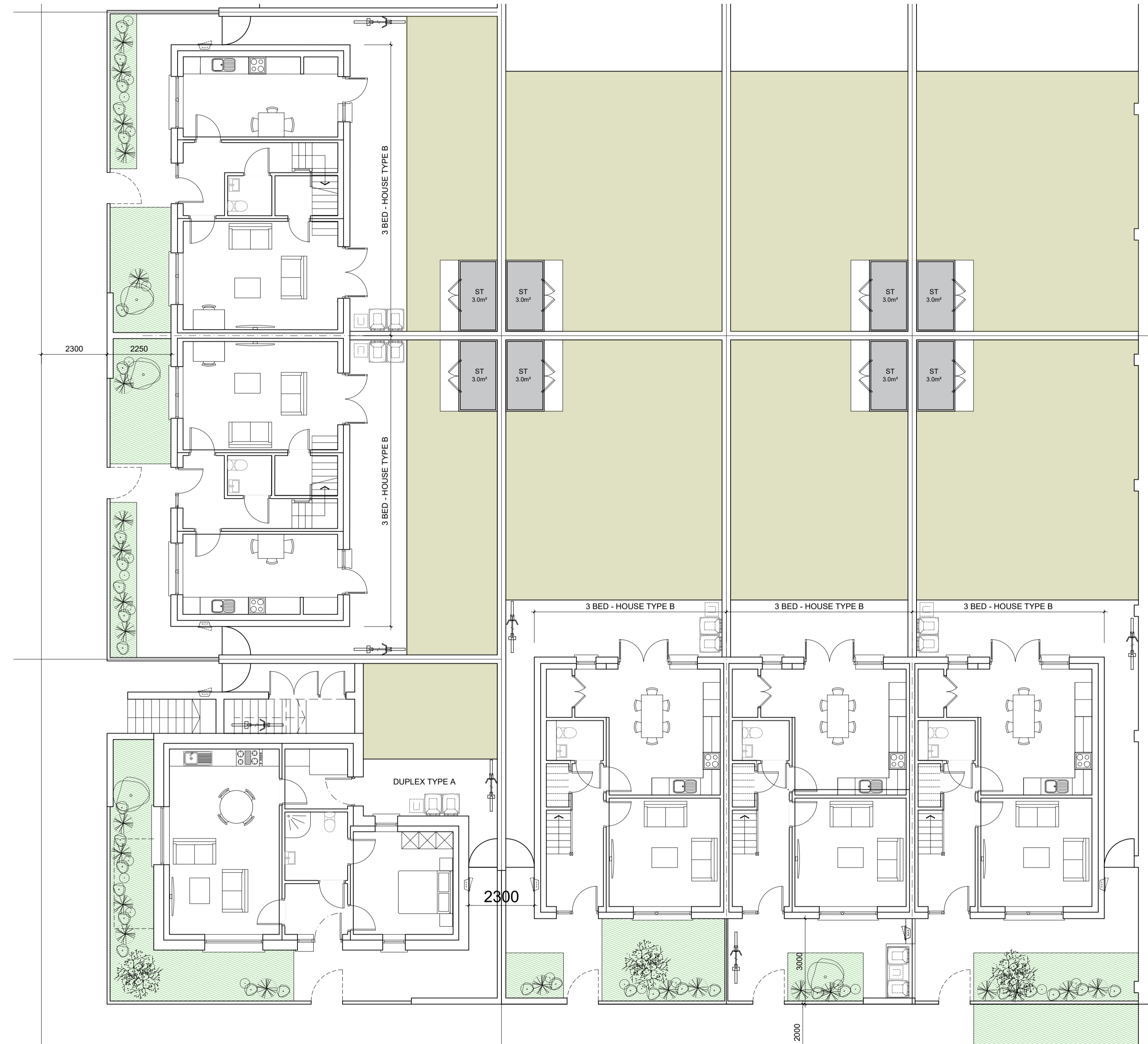
Image of typical curtilage treatment to 3-bed, House Type C



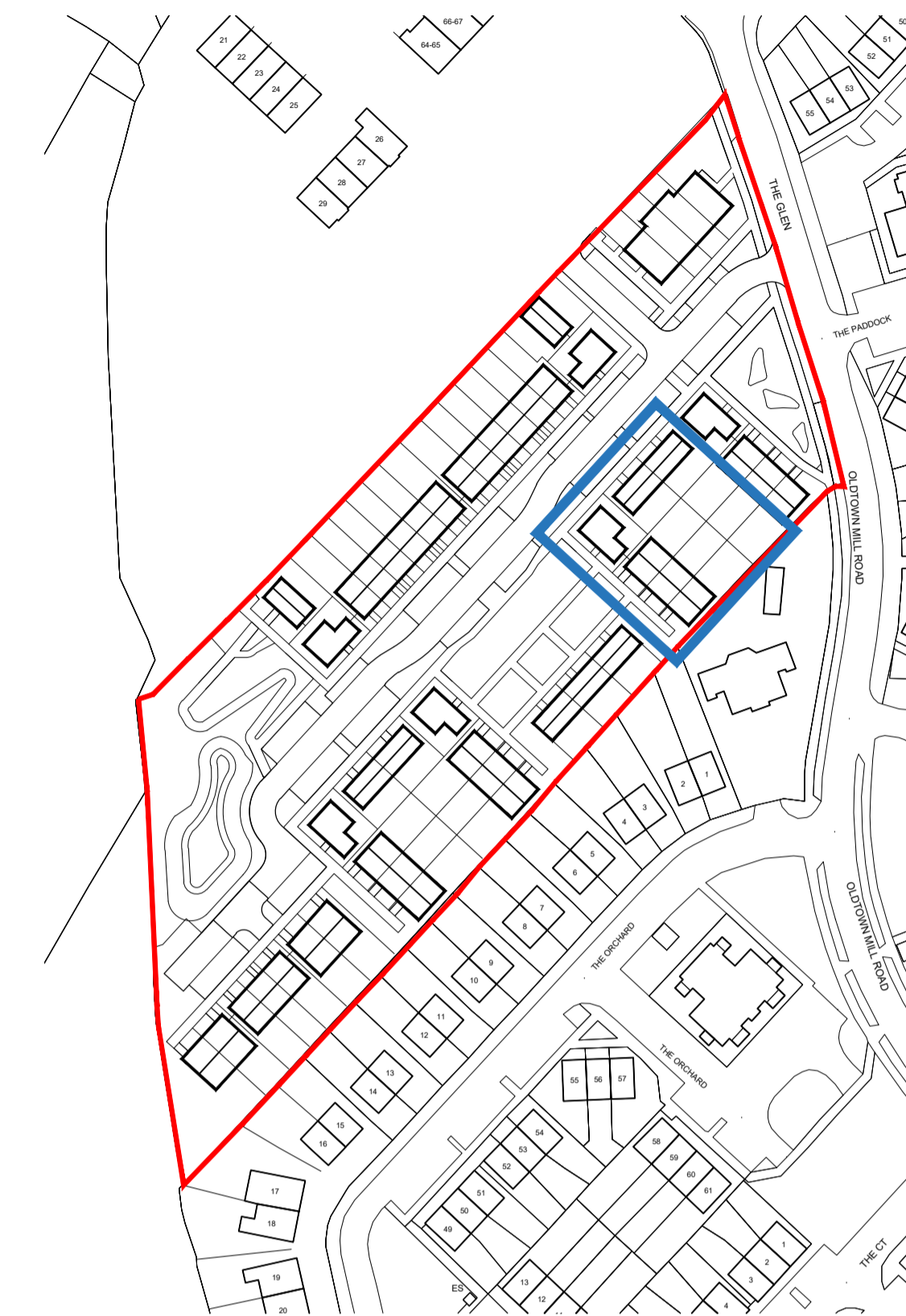
Image of typical curtilage treatment to Duplex type A



Image of typical curtilage treatment to 3-bed, House Type B



Typical Curtilage Detail - Refer to Key Plan



KEY PLAN

REV	DATE	DESCRIPTION	ISSUED BY
REVISIONS			

FOR PLANNING

CLIENT: NDFA on behalf of Kildare County Council

PROJECT TITLE: SHB 485

DRAWING TITLE: Typical Curtilage Detail Sheet 1

DRN BY:	CHK BY:	SCALE @ A1:	DATE:	REVISION:	JOB NO.:
PD	DL	1:100	11/03/24		23004
DRAWING NUMBER:	STATUS CODE:				
SHB5-OCK-DR-MCO-AR-P3-PL201	P3				

M'CORM
ARCHITECTURE AND URBAN DESIGN

No. 1 Grantham Street, Dublin 8
D08 A69Y Tel: +353 (0)1 478 8700
Block 6, Central Business Park
Tullamore, County Offaly
R35 F6F8 Tel: +353 (0)57 932 3867
website: www.mccorm.com
email: arch@mccorm.com

Figured dimensions only to be used. This drawing is copyright of M'CORM Ltd. All information is shared as per approved use in accordance with I.S. 884:2021 to I.S. EN ISO 19650-2:2018. If 'Status Code' above is empty, this information has been shared as Status Code SD - Work in Progress (WIP) / Draft.