

Figure 1 - Site Location Map



Figure 3 - Existing Bus Shelter to be Removed

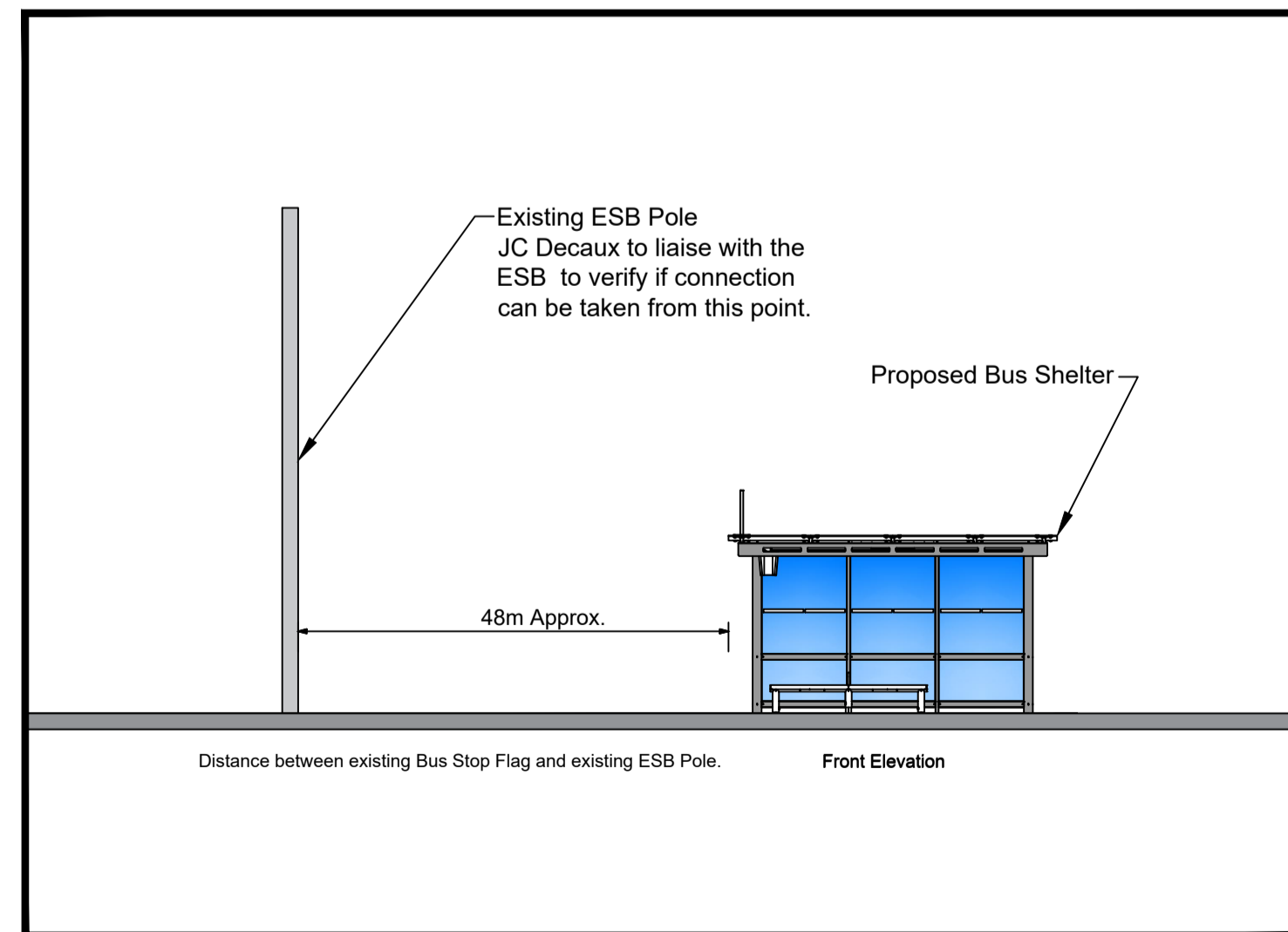
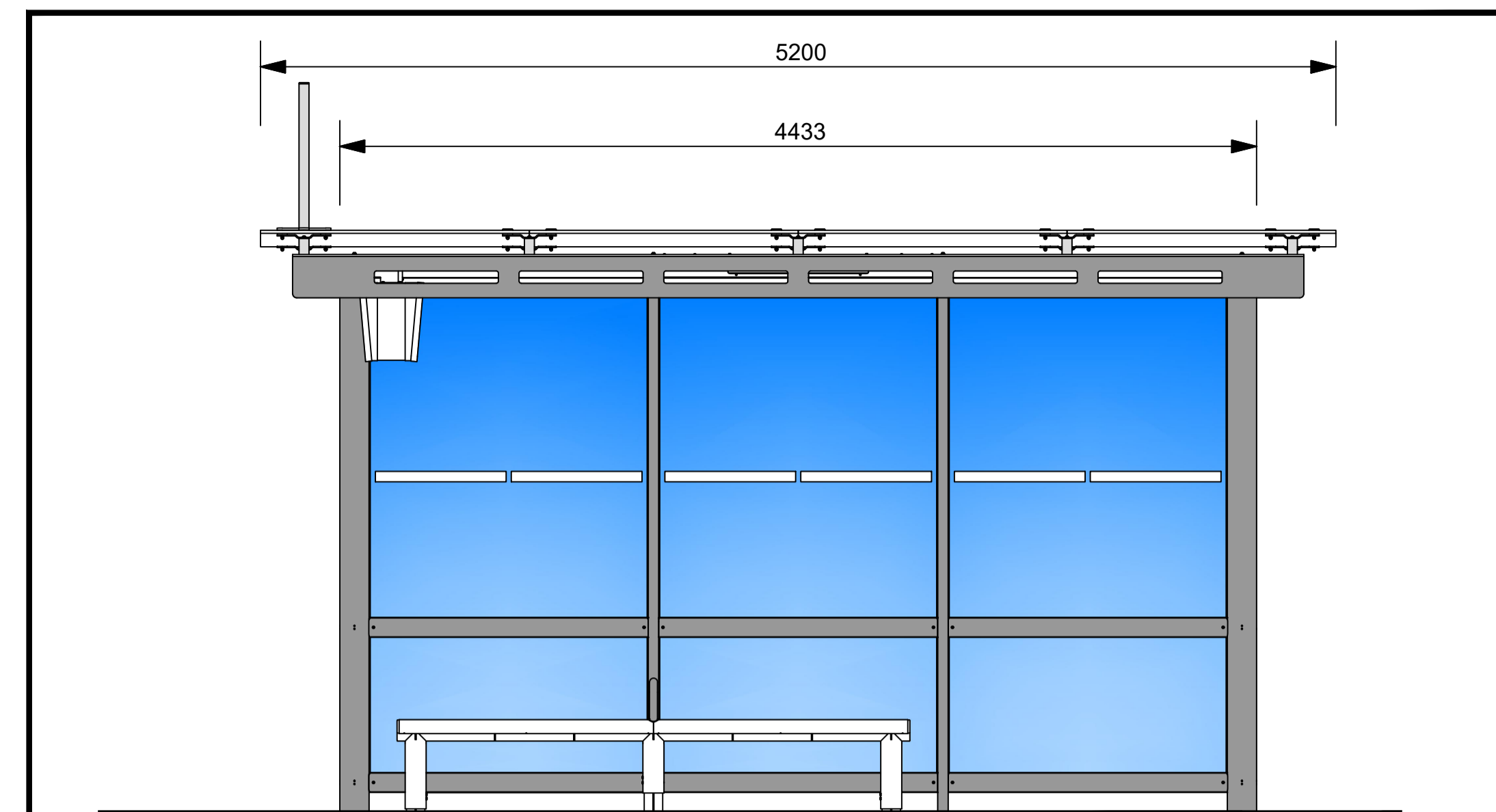
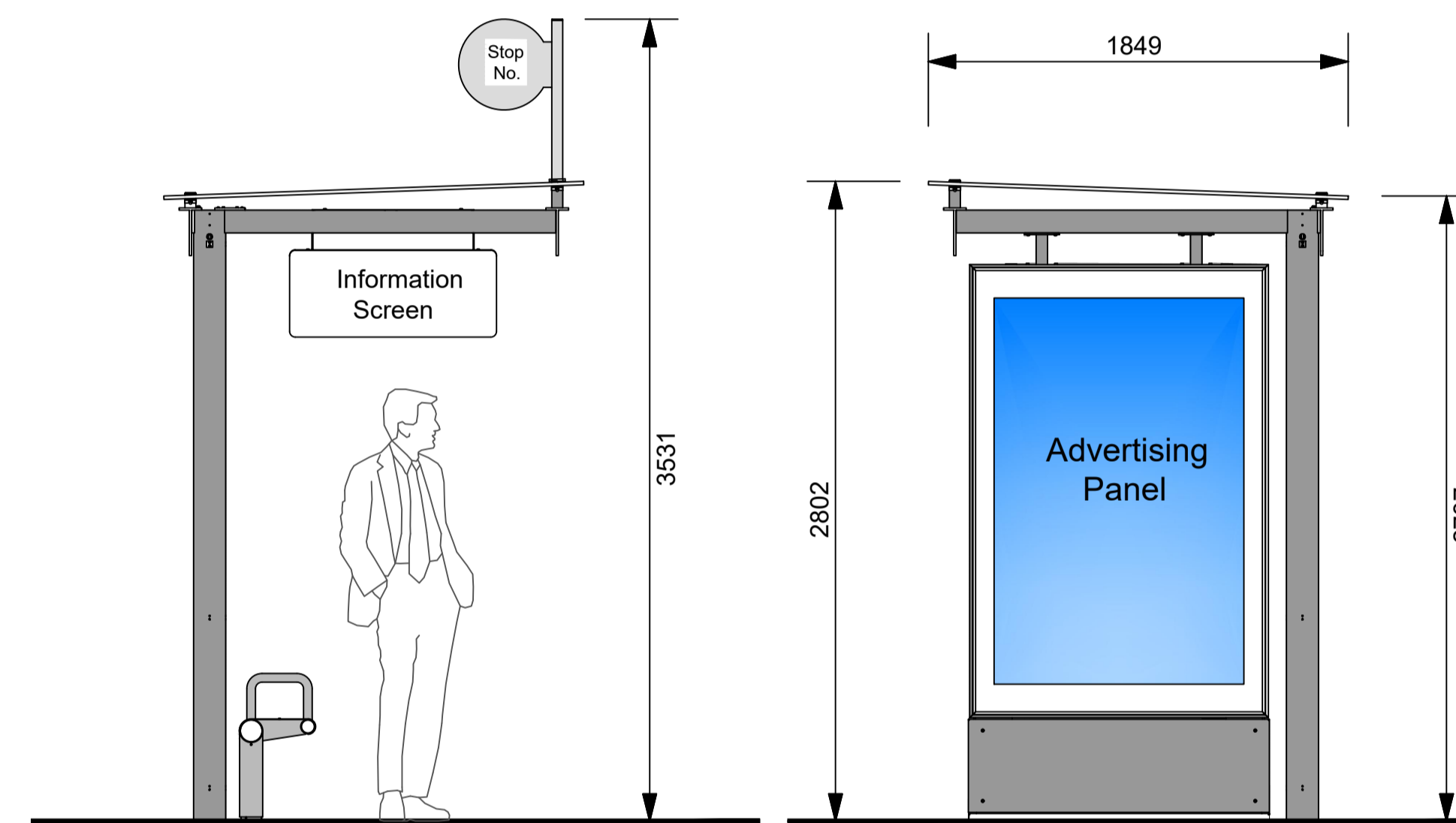


Figure 4 - ESB Pole Location (Scale: NTS)



Front Elevation  
3 Bay Reliance Mark Bus Shelter



Side Elevation  
3 Bay Reliance Mark Bus Shelter

Side Elevation (Gable End)  
3 Bay Reliance Mark Bus Shelter

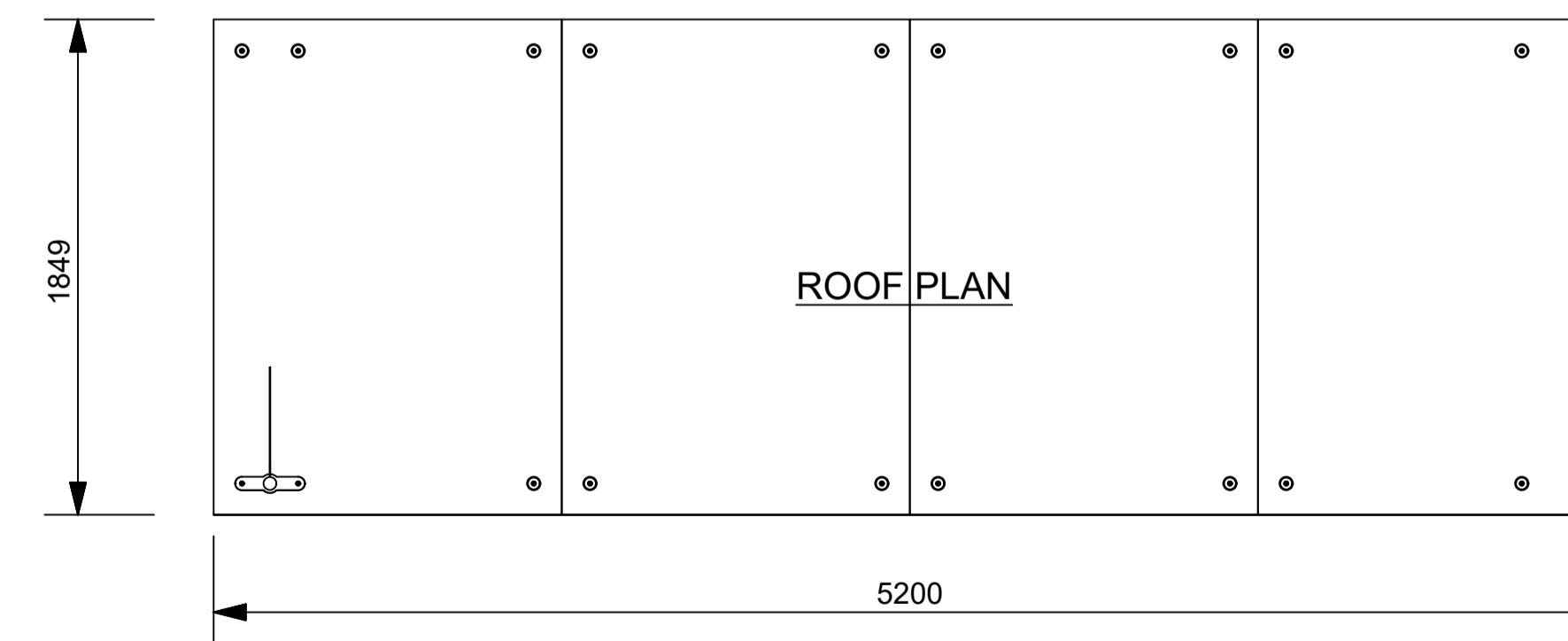


Figure 2 - Proposed 3 Bay Reliance Bus Shelter  
(Designs prepared by JC Decaux)

- Notes:
1. No dimensions to be scaled from this drawing.
  2. All sizes to be checked on site and any discrepancies to be reported to the engineer.

**Electrical Supply Requirements.**

Power supply to the shelter must be from the nearest single phase ESB Networks supply point. Only ESB approved ducting may be used:

A suitable draw rope for installation of supply cable must be left in place in the duct to facilitate later cable installation.

No part of the public lighting network can be used in supplying the shelter and the shelter cannot be connected to a public lighting mini-pillar.

**Ducting.**  
The design of the ducting & ESB service infrastructure arrangement required to bring power supply to the bus shelter and the RTP/ will be site specific.  
Final ducting & service infrastructure required in this instance shall be agreed in advance with the ESB and JC Decaux.

**Bus Shelter construction.**  
Please refer to JC Decaux information pack for design details for the shelter structure, including foundation and structure design

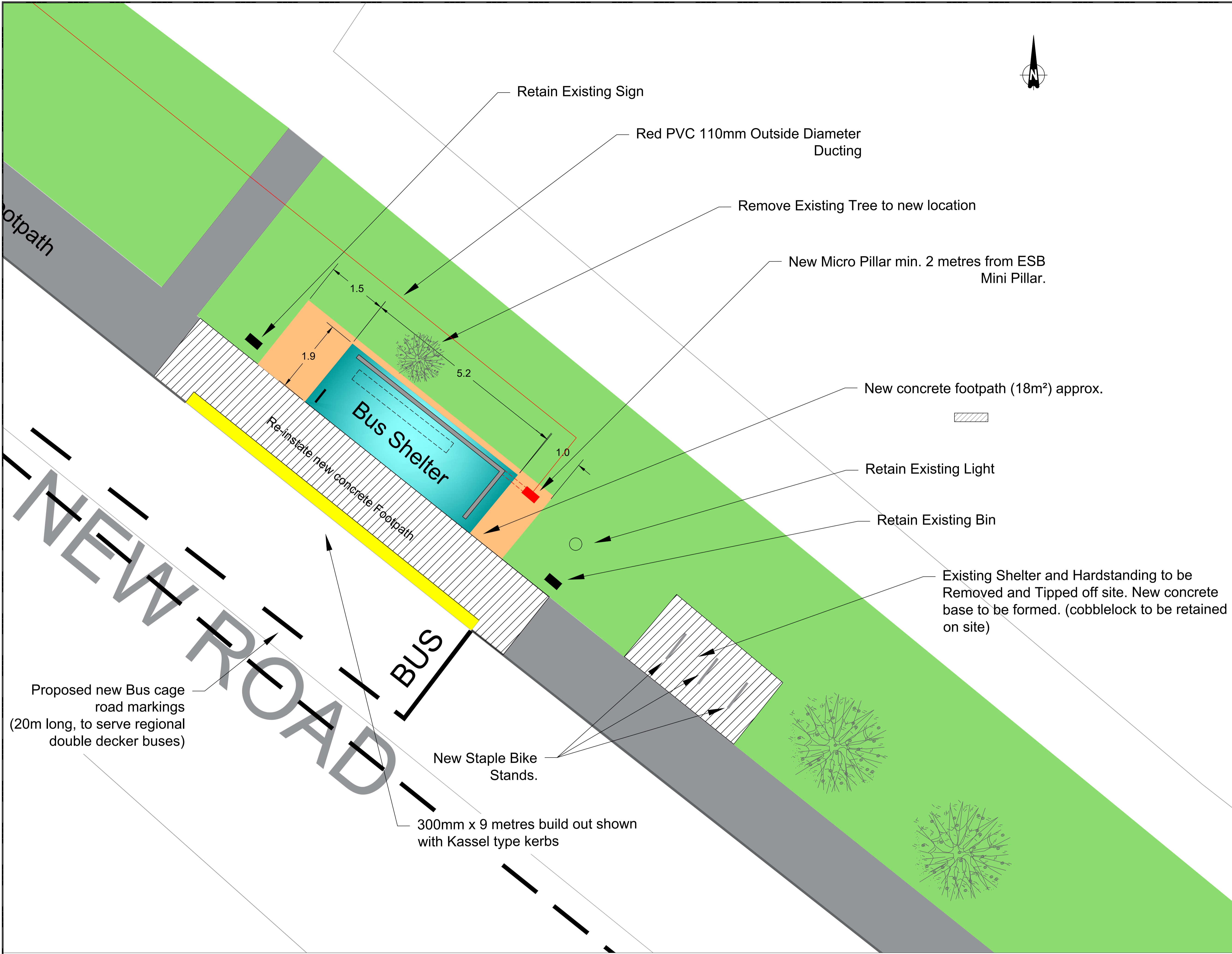
No.	Date	Issue / Revision	Chkd.

Project:  
NTA & KCC Bus Shelter Programme.  
Proposed upgrade of existing bus shelter with a new 3 Bay Reliance Bus Shelter at:  
Straffan - Co.Kildare (Bus Stop 104801)

Dwg. Title:  
Site location map & existing site layout

Dwg. No.	<b>TBC</b>	Rev.	<b>A</b>	Stage:	Section 3B
Date:	07/03/22	Scale:	As shown	TENDER	
Drawn:	P.Patton	Approved:	D.McC	CONTRACT	

Roads Transportation and Public Safety Dept.  
Roads Design Office  
Senior Engineer - Mr Donal Hodgins, BA, BAI, MIEI, C Eng  
Kildare County Council, Comhairle Chontae Chill Dara  
Aras Chill Dara, Devoy Park, Naas, Co.Kildare  
T:+353-45-980424 F:+353-45-980420 E: roads@kildarecoco.ie



Notes:  
 1. No dimensions to be scaled from this drawing.  
 2. All sizes to be checked on site and any discrepancies to be reported to the engineer.

Legend:

**Electrical Supply Requirements.**  
 Power supply to the shelter must be from the nearest single phase ESB Networks supply point. Only ESB approved ducting may be used.

A suitable draw rope for installation of supply cable must be left in place in the duct to facilitate later cable installation.

No part of the public lighting network can be used in supplying the shelter and the shelter cannot be connected to a public lighting mini-pillar.

**Ducting.**  
 The design of the ducting & ESB service infrastructure arrangement required to bring power supply to the bus shelter and the RTPI will be site specific.  
 Final ducting & service infrastructure required in this instance shall be agreed in advance with the ESB and JC Decaux.

**Bus Shelter construction.**  
 Please refer to JC Decaux information pack for design details for the shelter structure, including foundation and structure design

No.	Date	Issue / Revision	Chkd.

Project:  
 NTA & KCC Bus Shelter Programme.  
 Proposed upgrade of existing bus shelter with a new 3 Bay Reliance Bus Shelter at:  
 Straffan - Co.Kildare (Bus Stop 104801)

Dwg. Title:  
 General arrangement & Layout plan

Dwg. No. <b>TBC</b>	Rev. <b>A</b>	Stage: <b>Section 38</b>
Date: 07/03/22	Scale: NTS	<b>PART VIII</b>
Drawn: (Updated) P.Patton	Approved: D.McC	<b>TENDER</b>
		<b>CONTRACT</b>

Roads Transportation and Public Safety Dept.  
 Roads Design Office  
 Senior Engineer - Mr Donal Hodgins, BA, BAI, MIEI, C Eng  
 Kildare County Council, Cómhairle Chontae Cill Dara  
 Aras Chill Dara, Devoy Park, Naas, Co.Kildare  
 T:+353-45-980424 F:+353-45-980420 E: roads@kildarecoco.ie