

Figure 1 - Street Layout Plan of proposed new Bus Shelter

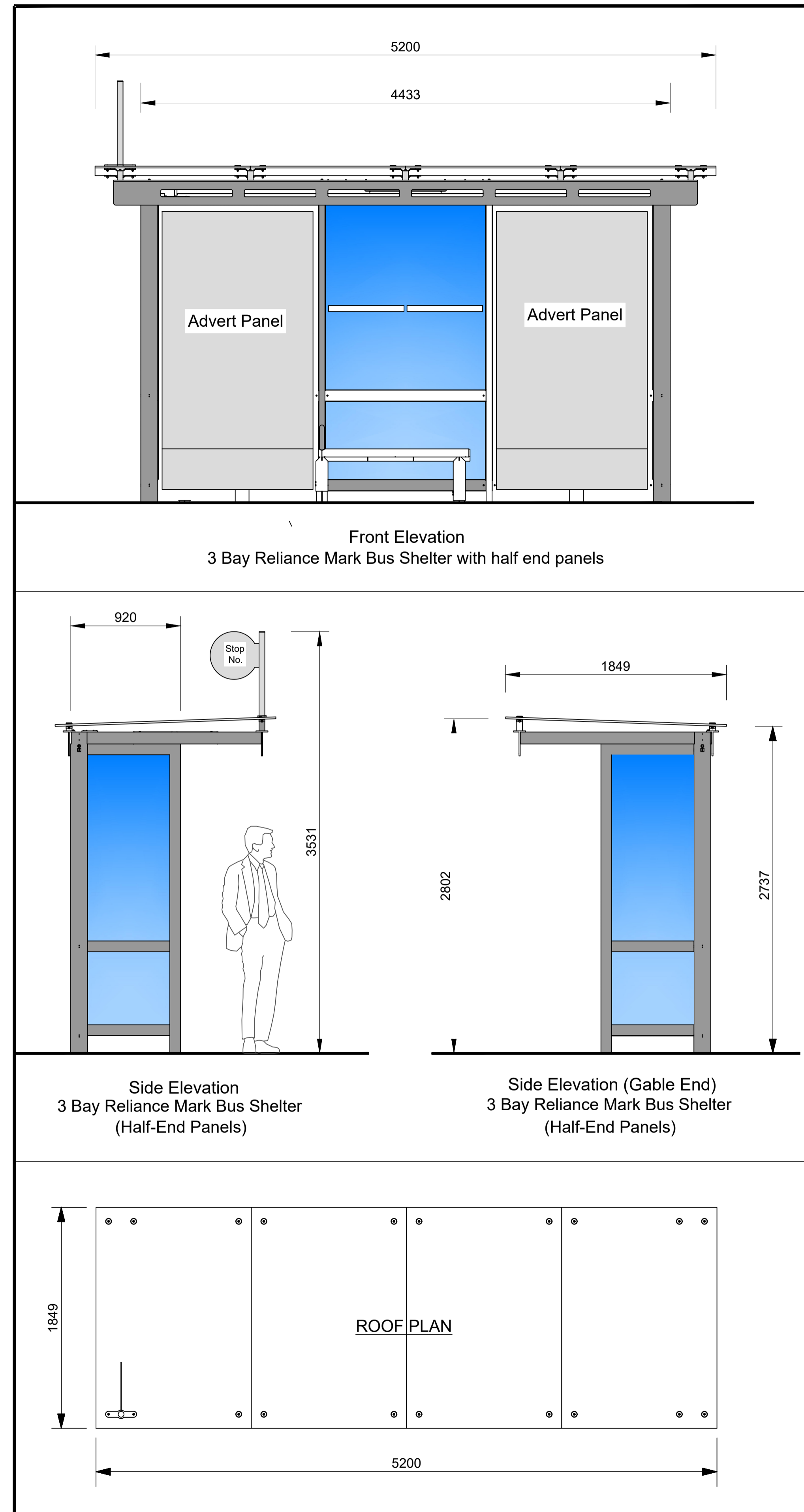


Figure 2 - Proposed 3 Bay Reliance Mark Bus Shelter (Scale 1:25) (Designs prepared by JC Decaux)

- Notes:
1. No dimensions to be scaled from this drawing.
 2. All sizes to be checked on site and any discrepancies to be reported to the engineer.

- Legend:
- Electrical Supply Requirements.**
- A. Power supply to the shelter must be from the nearest single phase ESB Networks supply point. Only ESB approved ducting may be used: 63mm outside diameter for duct runs no longer than 12m and 110mm outside diameter for duct runs longer than 12m.
- B. The duct must be located 600mm below the final pavement level. Please note ESB yellow marker tape must be installed at 300mm below finished ground level, over the electrical duct. The tape must be wider than the electrical service. Additionally where the electrical duct is installed in the carriageways and grassed areas ESB red marker strip is to be used at a minimum distance of 75mm above the duct, and is to be wider than the electrical service.
- C. A suitable draw rope for installation of supply cable must be left in place in the duct to facilitate later cable installation.
- D. No part of the public lighting network can be used in supplying the shelter and the shelter cannot be connected to a public lighting mini-pillar.
- Bus Shelter construction.**
Please refer to JC Decaux design details for the shelter structure, including foundation and structure design

2				
1				
No.	Date	Issue / Revision	Chkd.	

Project:
NTA & KCC Bus Shelter Programme.

Proposed Installation of new 3 Bay Reliance Mark Bus Shelter at the existing in-bound Bus Stop @ Castledermot - Co. Kildare

Dwg. Title:
General Arrangement Drawing no.1

Dwg. No.	E21/12	Rev.	Stage:
Date:	10/08/2022	Scale:	NTS
Drawn:	P.K	Approved:	
		<input type="checkbox"/> PART VIII <input type="checkbox"/> TENDER <input type="checkbox"/> CONTRACT	

Roads Transportation and Public Safety Dept.
Roads Design Office

Director of Services - Ms. Evelyn Wright
Senior Engineer - Mr. Donal Hodgins, BA, BAI, MIEI, C.Eng

Kildare County Council, Cómhairle Chontae Cill Dara
Áras Chill Dara, Devoy Park, Naas, Co.Kildare
T:+353-45-980424 F:+353-45-980420 E:roads@kildarecoco.ie

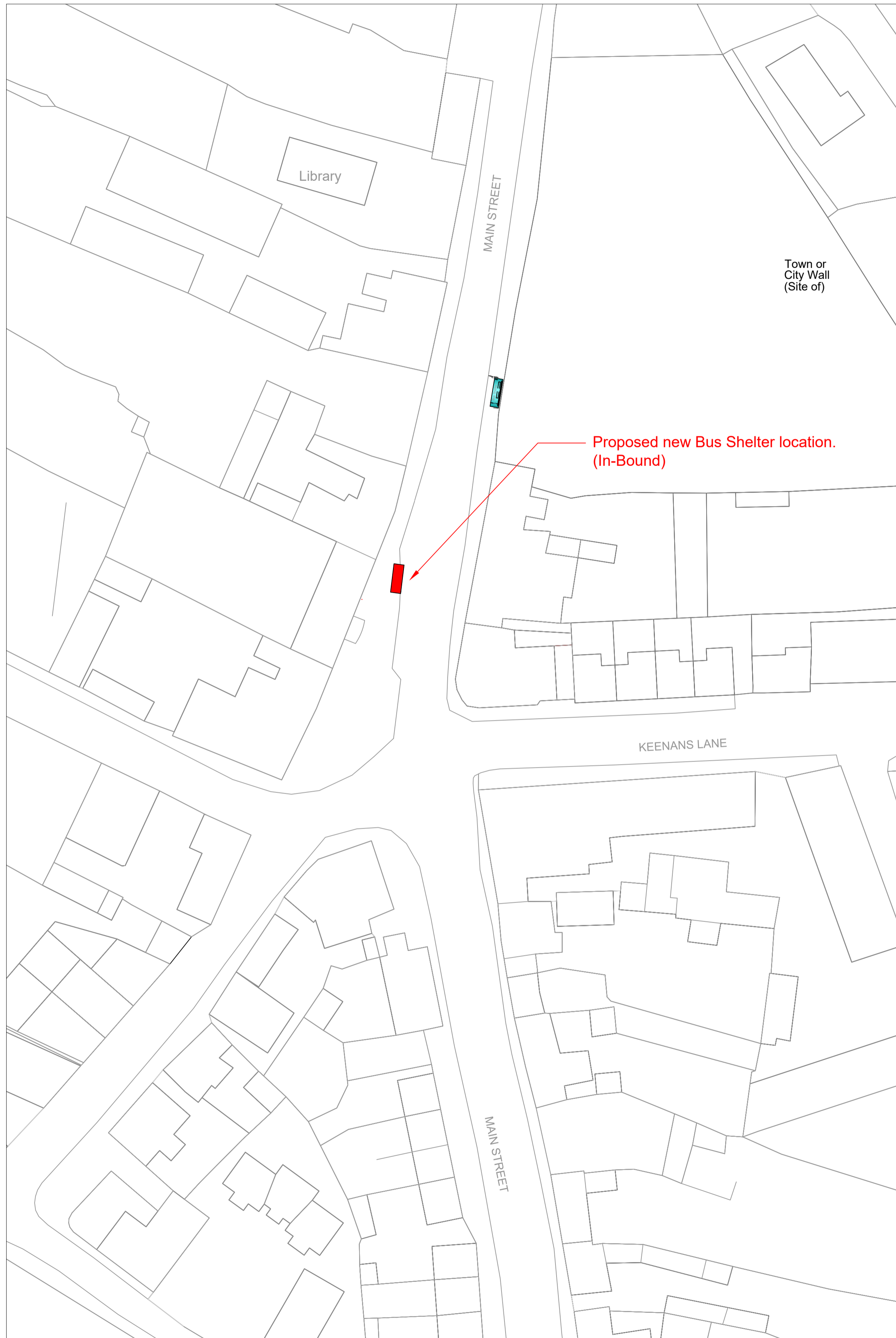


Figure 3 - Site Location Map (Scale 1:500)

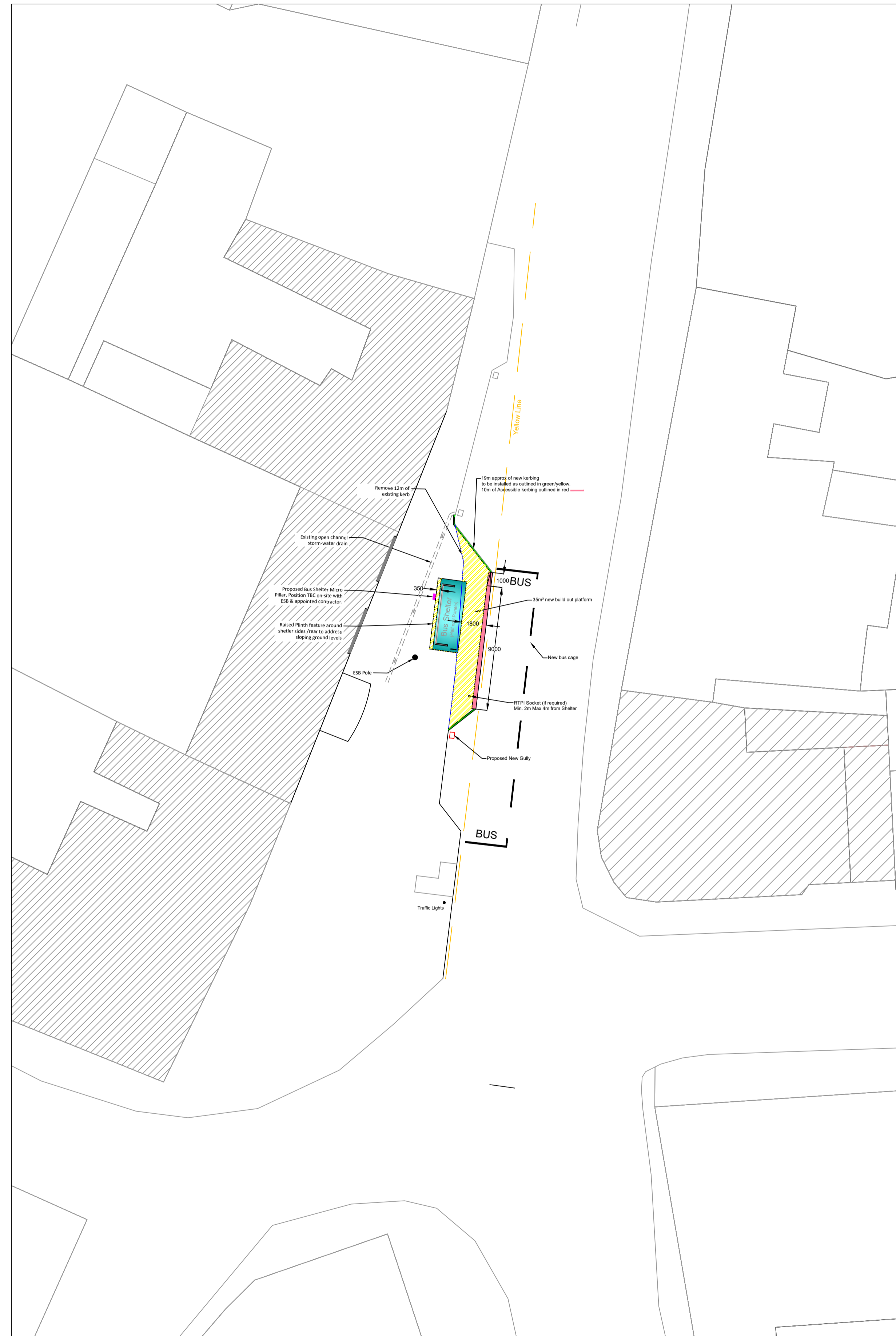


Figure 4 - Layout position (Scale 1:200)

- Notes:
1. No dimensions to be scaled from this drawing.
 2. All sizes to be checked on site and any discrepancies to be reported to the engineer.

Legend:

No.	Date	Issue / Revision	Chkd.
1	12/04/21	Initial Tender Drawing Issue	

Project:
NTA & KCC Bus Shelter Programme.

Proposed Installation of new 3 Bay Reliance Mark Bus Shelter at the existing in-bound Bus Stop @ Castledermot - Co. Kildare

Dwg. Title:
Site Location Map

Dwg. No. E21/14	Rev.	Stage: Section 3a
Date: 12/04/21	Scale: 1/500	PART VIII
Drawn: P.K	Approved:	TENDER
		CONTRACT

Roads Transportation and Public Safety Dept.
Roads Design Office

Director of Services - Ms. Evelyn Wright
Senior Engineer - Mr. Donal Hodgin, BA, BAI, MIEI, C.Eng

Kildare County Council, Cómhairle Chontae Cill Dara
Áras Chill Dara, Devoy Park, Naas, Co.Kildare
T:+353-45-980424 F:+353-45-980420 E:roads@kildarecoco.ie

Castledermot - Co. Kildare