



Public Consultation – Celbridge to Hazelhatch Link Road Emerging Preferred Route Corridor

28th March – 6th May 2022

Kildare County Council is developing the Celbridge to Hazelhatch Link Road Scheme. This is a second non-statutory Public Consultation.

The Project Team seeks feedback from the public and interested parties on the Emerging Preferred Route Corridor identified for the scheme.

We would like to hear your views on the Emerging Preferred Route Corridor by 5pm on Friday 6th May 2022.

Need for the Scheme

Kildare County Council successfully secured funding from the Department of Housing Planning and Local Government (DoHPLG) under the Urban Regeneration Development Fund (URDF).

Celbridge is an important regional town within Kildare and a significant commuter town for Dublin and other noteworthy employment centres in the region. Celbridge has seen its population more than double in the past 30 years with over 70% of the population living north of the River Liffey.

Traffic demands in Celbridge are likely to grow significantly in the coming decade with substantial lands south of the town centre earmarked for development. The existing road network in and around Celbridge town centre, including the existing bridge over the River Liffey, is substandard and experiences significant daily traffic congestion.

The new Celbridge to Hazelhatch Link Road Scheme will benefit all road users and deliver local improvements through:

- ✓ Improving connectivity to Hazelhatch Train Station
- ✓ Improved safety for pedestrians and cyclists
- ✓ Facilitate development of zoned lands
- ✓ Result in shorter, safer and more sustainable journeys to Hazelhatch Train Station

What's Happening Now

The Celbridge to Hazelhatch Link Road Scheme is now progressing through the 'Option Selection' phase.

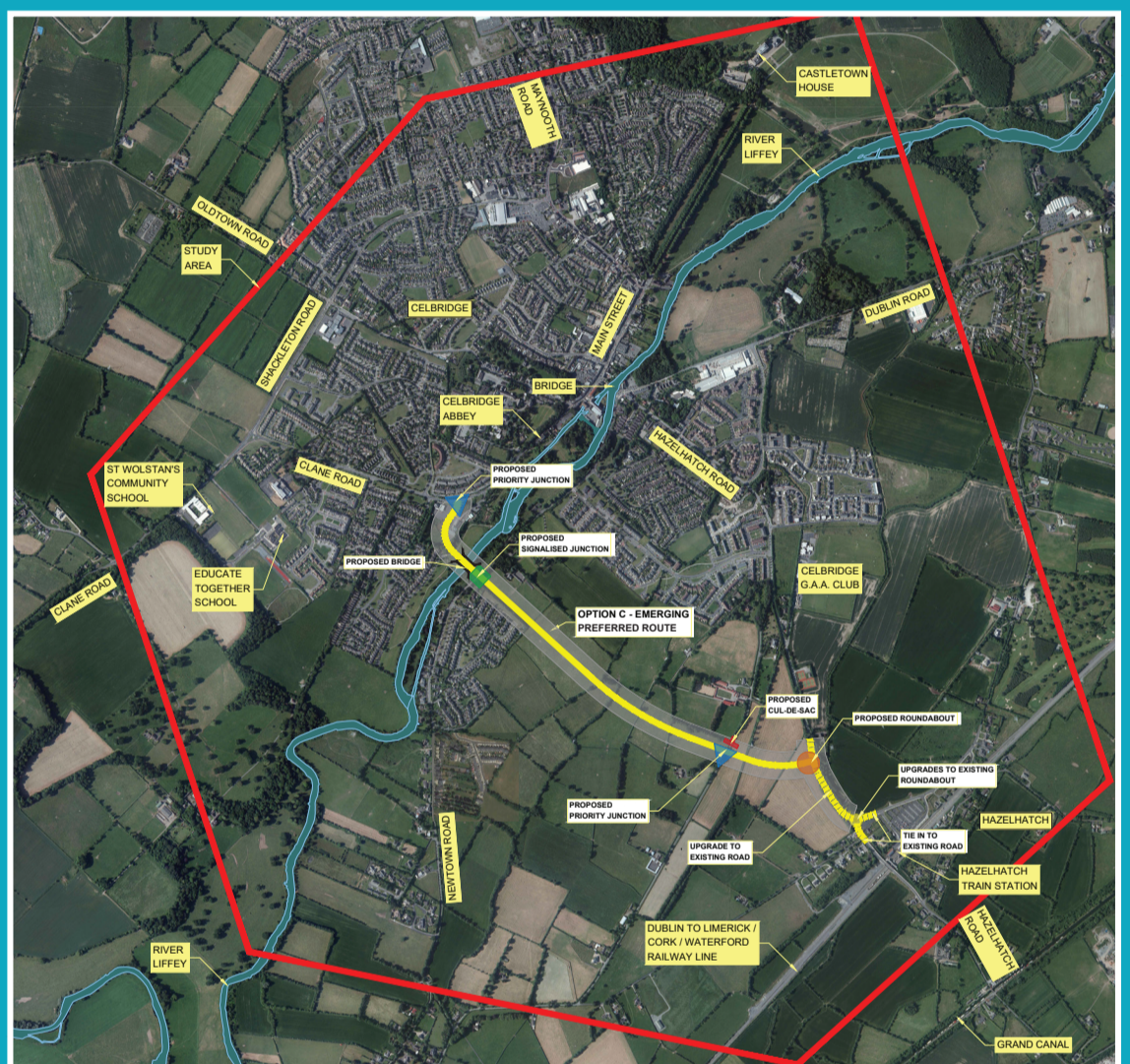
The project team has undertaken an appraisal, in accordance with TII Project Management Guidelines, of the Five Route Corridor Options published in February 2021. The feedback received through the first non-statutory Public Consultation has been considered during the process of identifying an 'Emerging Preferred Route Corridor'. We now seek your feedback on this Emerging Preferred Route Corridor.

For further information please visit the project consultation portal where an Interactive map of the Emerging Preferred Route Corridor is available to view at:

<https://consult.kildarecoco.ie/en/consultation/celbridge-hazelhatch-link-road-public-consultation-emerging-preferred-route>

Next Steps

Feedback and submissions received through this 2nd non-statutory Public Consultation will be considered by the Project Team before a Preferred Route Corridor ('Preferred Option') is finalised. The Phase 2 Option Selection process will then be completed and the 'Option Selection Report' finalised along with the 'Preferred Option'. The 'Preferred Option' will be put on Public Display to inform all stakeholders and the public. This is expected to take place in mid-2022.



	EMERGING PREFERRED ROUTE CORRIDOR - OPTION C		PROPOSED PRIORITY JUNCTION (INDICATIVE/SUBJECT TO CHANGE)
	100m ASSESSMENT CORRIDOR		PROPOSED CUL-DE-SAC (INDICATIVE/SUBJECT TO CHANGE)
	PROPOSED ROUNDABOUT (INDICATIVE/SUBJECT TO CHANGE)	SECTIONS SHOWN DASHED DENOTE UPGRADE OPTIONS ALONG EXISTING ROUTES	
	PROPOSED SIGNALISED JUNCTION (INDICATIVE/SUBJECT TO CHANGE)	ROUTE ASSESSMENT CORRIDOR SHOWN 100m WIDE TO ALLOW FOR DESIGN DEVELOPMENT AND ASSESSMENT	

Have Your Say

The project team would like to hear your views on the Emerging Preferred Route Corridor to inform the design of the project.

We welcome your feedback on any issues or information, relating to the Emerging Preferred Route Corridor, which you think should be considered in the identification of the Final Preferred Route.

All project information, including an interactive map of the Emerging Preferred Route Corridor and the consultation questionnaire (also enclosed), is available to view and submit online.

In-person consultation days are arranged for **Thursday 7th April** and **Friday 8th April 2022** at **Celbridge Community Centre** from **12 noon until 8.30pm** on both dates, where interested parties will have an opportunity to discuss the scheme with the Project Team.

Submitting Feedback:

Online: <https://consult.kildarecoco.ie/en/consultation/celbridge-hazelhatch-link-road-public-consultation-emerging-preferred-route>

Email: CHLR@kildarecoco.ie

Post: Proposed Celbridge to Hazelhatch Link Road, A/Senior Executive Officer, Roads, Transportation and Public Safety Department, Kildare County Council, Áras Chill Dara, Devoy Park, Naas, Co. Kildare, W91 X77F.

All feedback should be returned by **5pm on Friday 6th May 2022.**