



PROPOSED CAR PARK and ADJACENT EXERCISE AREAS

1. Main access road, 6m wide surfaced in asphalt with 255x200x900mm (125m upstand) concrete kerb with natural stone aggregate finish, flush and drop kerbs as required.
2. Access road, 4.2m wide surfaced in asphalt with 255x200x900mm (125m upstand) concrete kerb with natural stone aggregate finish, flush and drop kerbs as required.
3. Parking access road, 6m wide to parking lanes, 3M wide where connecting parking lanes, surfaced in asphalt with 150x75x900mm flush delineation edge with natural stone aggregate finish to outer edge.
4. Parking spaces, 4.8m long x 2.4m wide, surfaced in permeable asphalt.
5. Planting beds with sustainable urban drainage (SUDS) tolerant planting within upstand kerbs with kerb drainage units.
6. Bus pull in / parking area, 5M wide, surfaced in asphalt with 255x200x900mm (125m upstand) concrete kerb with natural stone aggregate finish.
7. Bus turning circle surfaced in asphalt with 255x200x900mm (125m upstand) concrete kerb with natural stone aggregate finish. For tracking see engineers drawings.
8. Adult Gym equipment with mixed cardio, calisthenic and cross training equipment.
9. Basketball court, 28x15m court surfaced in sports grade tacadam with painted finish and 3M high heavy duty 'rebound' wire mesh sports fencing and 2no steel basketball hoops.
10. Skatepark, Insitu concrete plaza style skatepark or use by skaters, scooters and roller skaters, skate area 620m2.

CARPARK AND EXERCISE AREAS PLAN, SCALE 1:500 @A1



PLAYGROUND PLAN, SCALE 1:500 @A1

PROPOSED CHILDRENS PLAYGROUND

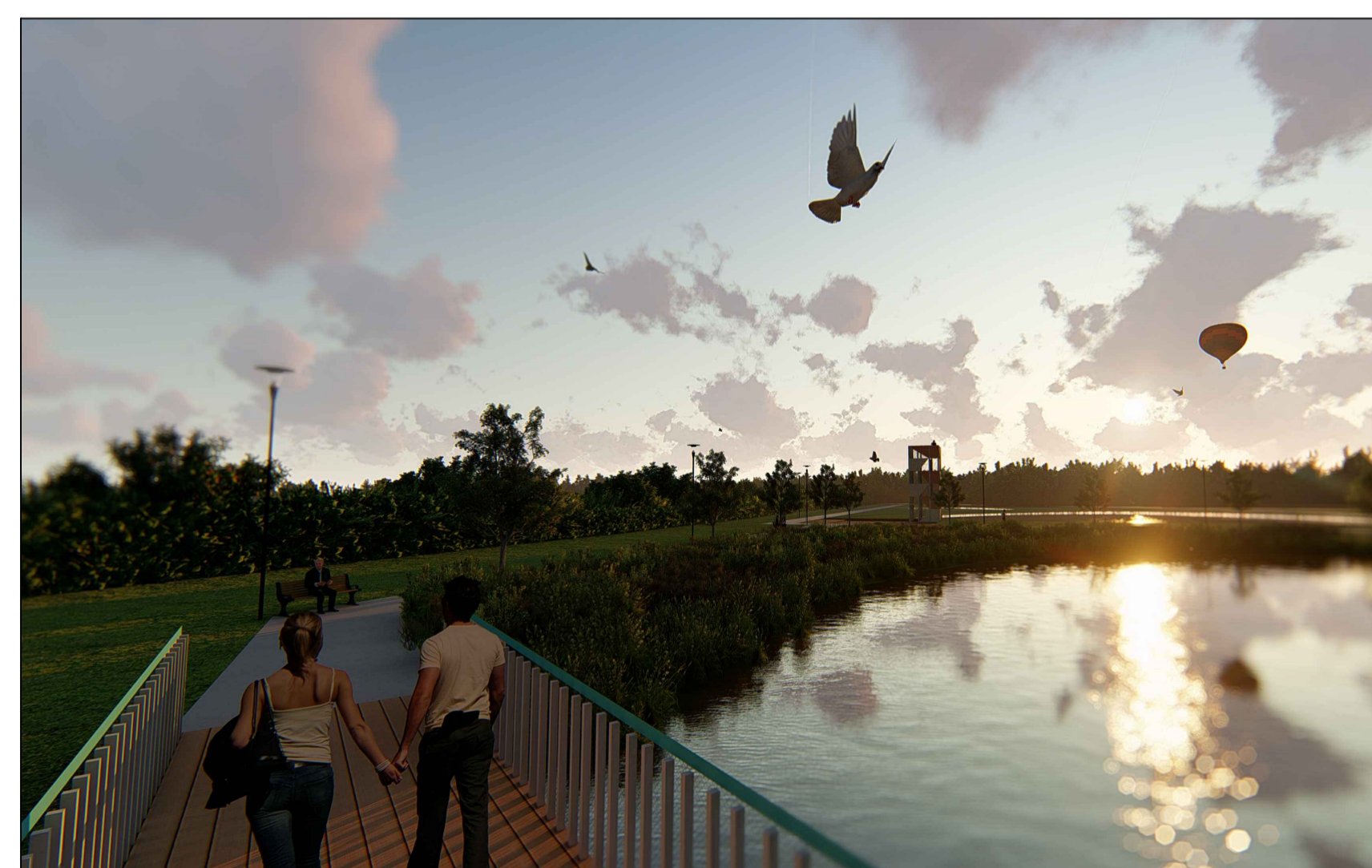
1. Rubbercrumb safety surfacing in multi colours with buildup and foundations to manufactures specification to suit fall heights of individual equipment.
2. 2M wide in-situ concrete paths with natural stone aggregate finish.
3. 1m high chestnut pale fence with fixed to galvanized steel fence posts at 2M spacing and 2no self closing galvanized steel 1.2M wide playground safety gates.
4. Early years play zone, equipment to include cradle swings, springers, roundabout and playhouse with slide.
5. Junior play zone, equipment to include swings, basket swing, climbing net, spinners and balance beams.
6. Youth play zone, equipment to include play tower with connected climbing nets and slide, agility equipment.
7. Timber and galvanized steel frame picnic set 'X Table' Picnic set by streetlife or similar and approved.
8. Timber and galvanized steel frame bench seats 'Rough and Ready' No6 bench by streetlife or similar and approved.



DETAILED PLAN OF CAR PARK AND EXERCISE AREAS



View 1: Entrance from Canal with Playground in the background



View 2: Wetlands area with bridges and bird observation tower



View 3: View of central stream with pitches in the background

VISUALIZATIONS OF FEATURE SITE AREAS