

Part 8 Submission

General notes:

Land Use: Settlement Expansion

Site area No. 1: 0.31 ha outlined in red

Plot Ratio: 0.12 Outer Suburban = 0.25 - 0.35

Site Coverage: 12.5% Residential max 50%

Residential Density: 13 units / ha provided
Dev. Plan recommended 15 Units / ha

Open Space: 15.6% provided
Dev. Plan recommended min 15%

Services:

Water: Access to public mains

Foul: Access to public sewer

Surface water: Access to soakaway

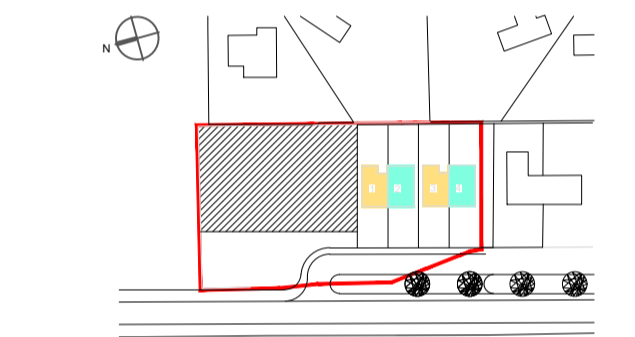
Proposal:

HT A: 2 no 3 bed/5 person - 103 sq.m.

HT B: 2 no 2 bed/4 person - 88 sq.m.

Unit No.	Type	Bedrooms	Gross Internal Floor Area	Agg. Living Area	Agg. Bedroom Area	Storage Area	Private open space	KCC min standard
1	B	2B-2S-SP	88	30.0	24.8	8.07	90.0	60.0
2	A	3B-2S-SP	103	14.4	32.0	9.42	90.0	60.0
3	B	2B-2S-SP	88	30.0	24.8	8.07	90.0	60.0
4	A	3B-2S-SP	103	14.4	32.0	9.42	90.0	60.0

Unit Type	Spaces per house
2 x 2 bedroom units	50%
2 x 3 bedroom units	50%
2	Spaces per house
-	Visitor space
4	Total



Part 8 Submission
Ref Nr. P82020.05

- Notes:**
- This drawing has been prepared for Part 8 purposes only.
 - All drawings to be read in conjunction with all other consultant drawings, Architect to be informed immediately of any discrepancies.
 - Figured dimensions only to be taken from this drawing. All dimensions and levels to be checked on site, Architect to be informed immediately of any discrepancies.

Revisions:

Rev.	Notes	Date
01		01-01-2020
02		
03		
04		
05		

Kildare County Council,
Architectural Services Department,
Devoy Park,
Naas,
Co. Kildare.

Project:
Infill Residential Units
Hill View Terrace, Lipstown Lr.,
Narraghmore, Co. Kildare
Kildare County Council

Client:
Annette Aspell, Director of Housing

Prepared by:
Architectural Services Section,
Housing Section,
Kildare County Council.

Senior Architect: David Creighton, MRAIA
Senior Executive Architect: Patrick Harrington, MRAIA
Project Architect: Mary Morrissey MRAIA

Dwg: Sections & Elevations
5 of 5
Scale: 1:100 @A1

Project No: 16-128
Dwg No.: P8-05

Status: Part 8
Drawn by: GW
Chk: PH
Date: Nov 2020

