



McAuley Place, Naas

RESIDENTIAL DEVELOPMENT

Landscape Report

March 2026

00 Contents



- 01 Introduction
- 02 Landscape Analysis
- 03 Landscape Vision
- 04 Planting

01 Introduction



The site, known as 'Beaufort,' is situated on the western side of the Sallins Road, approximately 165m from the intersection of North Main Street and Poplar Square. The site is 0.33 Ha, 3318.40 sqm. The zoning of the property falls under the 'B: Existing / Infill Residential' as outlined in the Naas Local Area Plan 2021 - 2027.

The study presents a maximum layout of 43 units. By maintaining an appropriate setback from Salins Road to the east, and to the stream to the west, the proposal establishes a strong relationship with the surrounding environment. The overall massing of the development is responsive to the adjacent built environment and its landscape draws inspiration from the emphasis on existing vegetation. Its supporting housing and longer-term residential care facilities for older people should be fully integrated into the local community, the social sphere and its landscape objectives.

02 Landscape Analysis



02.1 Landscape Analysis - Site Context



Naas is a town located in County Kildare, Ireland. It is situated in the eastern part of the country, approximately 35 kilometers southwest of Dublin, the capital city. Naas serves as a significant commuter town for Dublin, owing to its proximity and good transportation links, including motorways and a railway station.

The town has a rich history dating back to ancient times and features notable landmarks such as Naas Castle and the Moat of Naas. It is also known for its vibrant community, bustling streets, and various amenities, including shops, restaurants, and recreational facilities.

Additionally, Naas hosts events and festivals throughout the year, contributing to its lively atmosphere and appeal to both residents and visitors alike.



02.2 Landscape Analysis - Site Boundary



Located adjacent to the main central town street and school, the site serves as a vital location for a residential development which can enhance the participation of the local community.



02.3 Landscape Analysis - Micro-climate



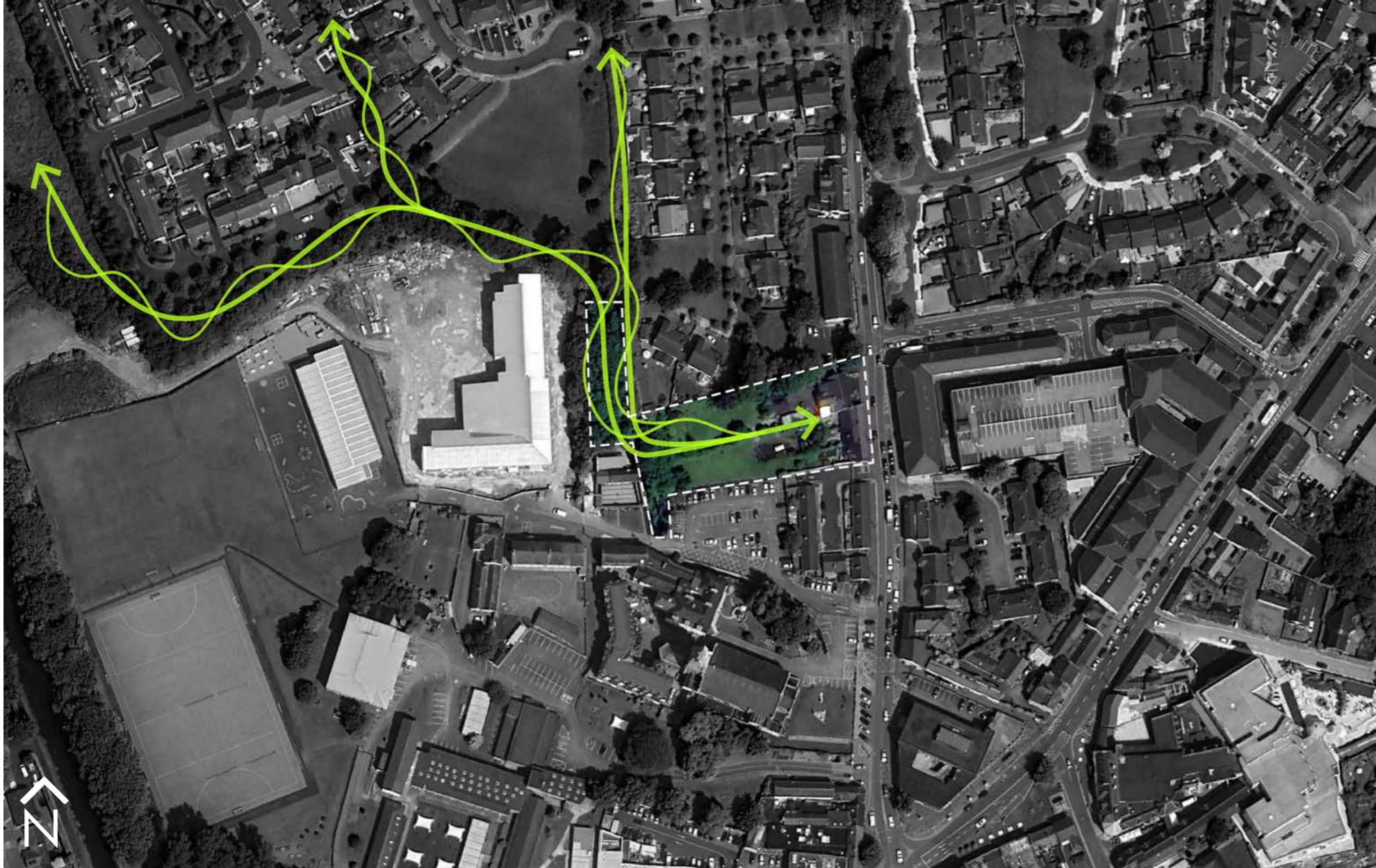
Naas experiences a micro-climate characteristic of the broader Leinster region in Ireland. It features a temperate maritime climate influenced by its proximity to the Atlantic Ocean.

The town tends to have relatively mild winters and cool summers compared to continental climates. However, being inland, Naas can experience slightly more extreme temperature variations compared to coastal areas.

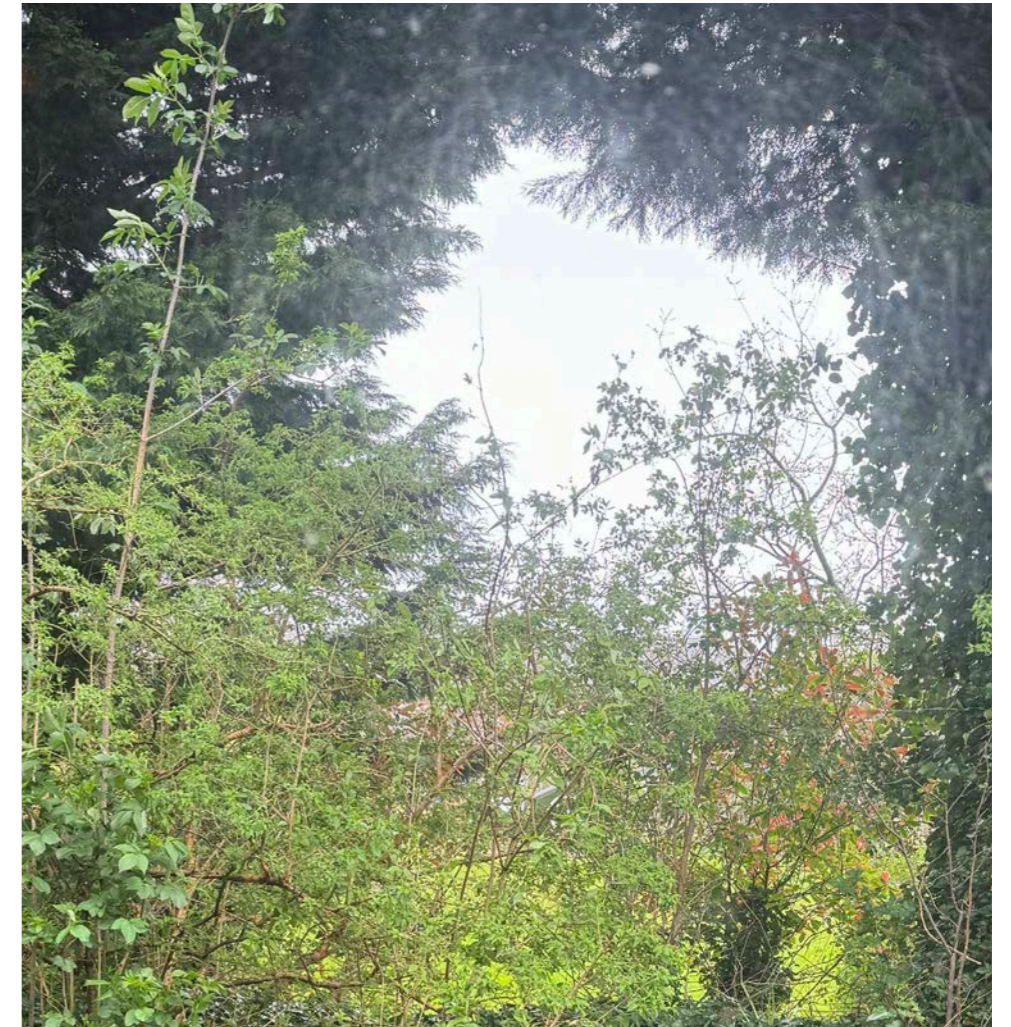
It typically receives a moderate amount of rainfall throughout the year, with precipitation evenly distributed across the seasons. Naas may also experience occasional fog, especially during the cooler months. Overall, its micro-climate combines elements of Ireland's maritime climate with localized variations influenced by its inland location and surrounding topography.



02.4 Landscape Analysis - Ecological Links



Understanding the site and its existing ecological characters provide clues as to how the landscape should be developed. The existing characteristics should be retained, enhanced and protected in natural settings wherein multiple landscape types can define particular areas and engage the environment in a multitude of beneficial ways.



02.5 Landscape Analysis - Existing Vegetation



The site's greatest natural assets are its existing ecologies. The design works to protect and celebrate these as part of its character. Furthermore, the design is enhanced with additional tree planting to all boundaries and its internal space, creating a variety of spatial experiences.



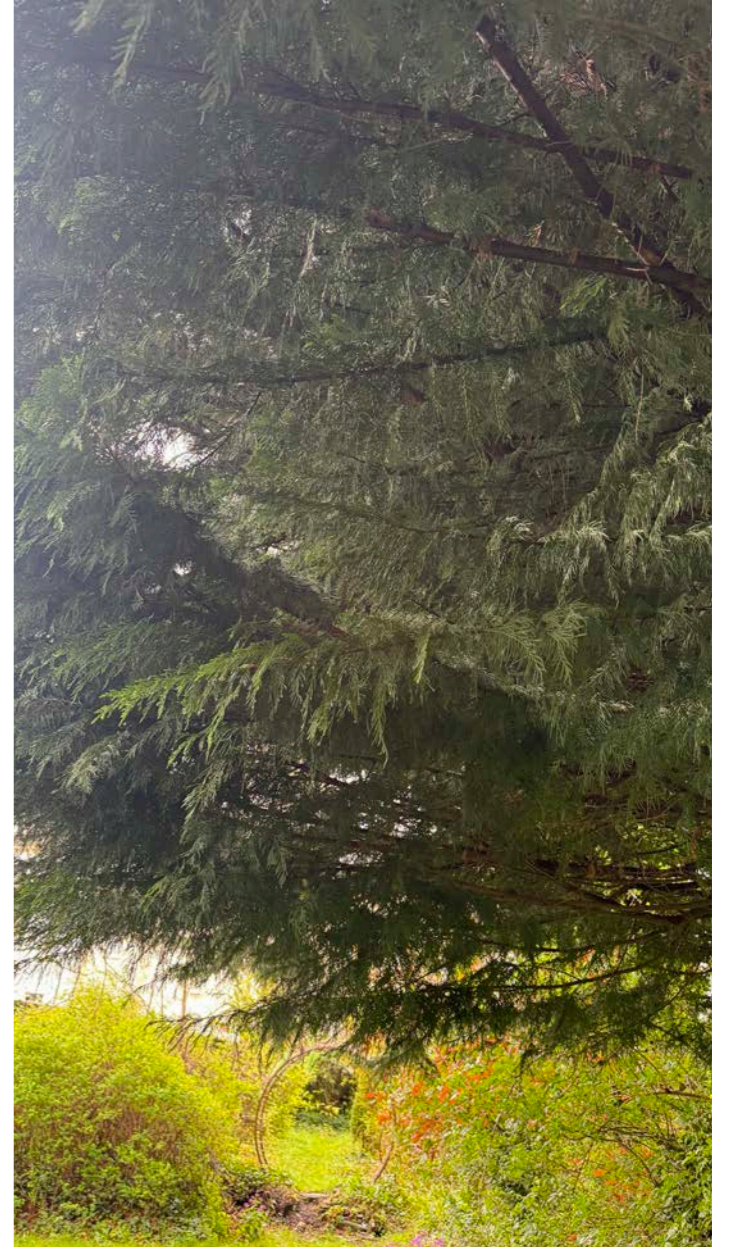
02.6 Landscape Analysis - Connectivity



The site connects very well with key destinations and transport. It promotes walking and cycling at its heart and the provision of amenities to support these drivers have allowed for its connectivity to the wider community and a sense of welcomeness for all.



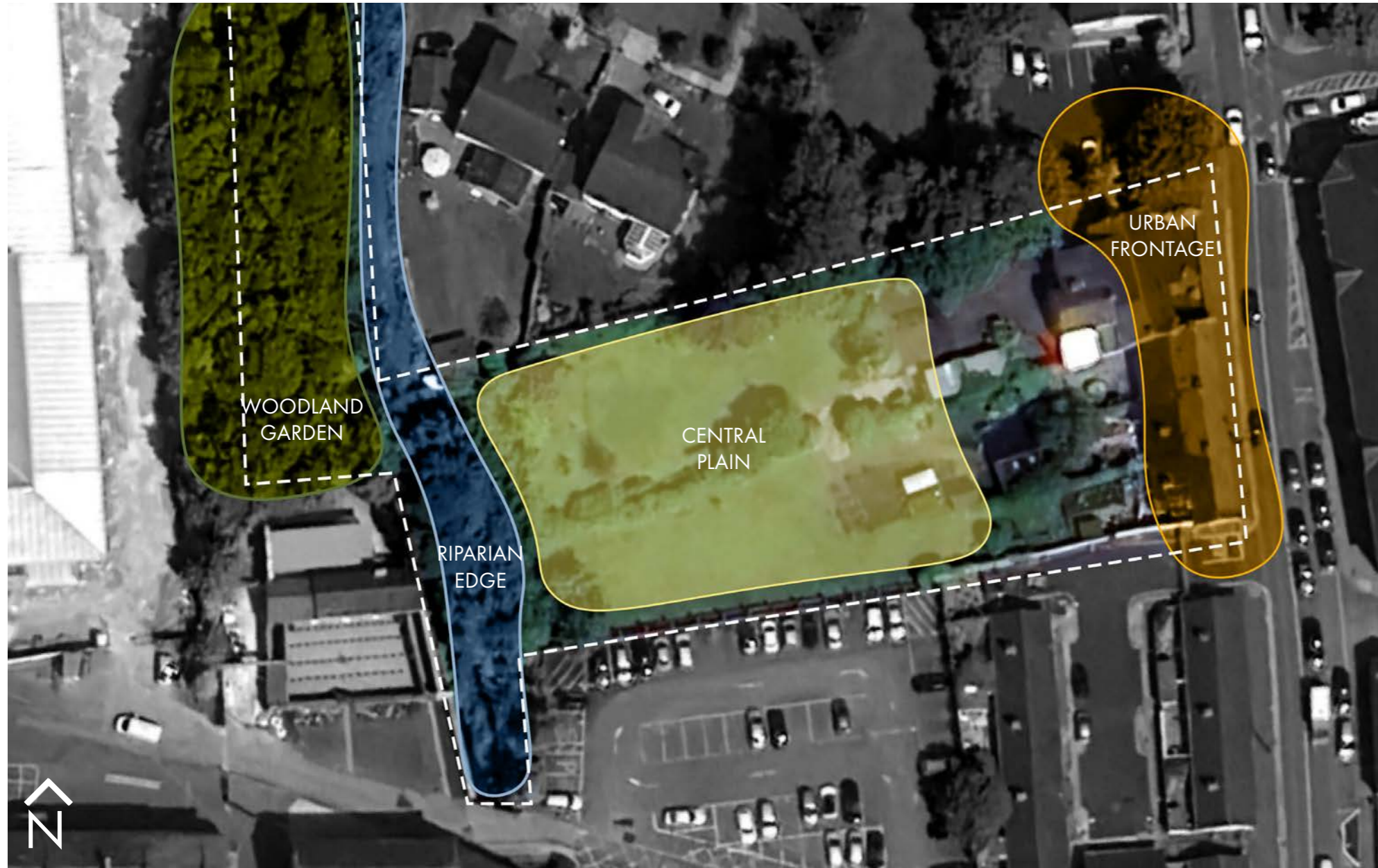
02.7 Landscape Analysis - Existing Site Character



The site boasts opportunities for landscape intervention, keying on the dense planting to cultivate hedgerow habitats which frame the longitudinal views towards open space. The woodland area at the west of the riparian edge strengthen the site's biodiversity. The unprogrammed open lawn areas show justification for the necessity of community and social areas for interaction, simultaneously for human occupants as well as nature.



02.8 Landscape Analysis - Existing Character Areas (Zoning)



The most dominant feature of the site is its unique green space; situated between a woodland garden which runs along the riparian edge, a central plain in its center which connects to the urban frontage of the site. From Sallins Road to the west of the site, the transition from urban to natural is a defining characteristic



NATURAL WALK



URBAN EDGE



HORTICULTURAL CULTIVATION



NATURAL BUFFERS



STREAM

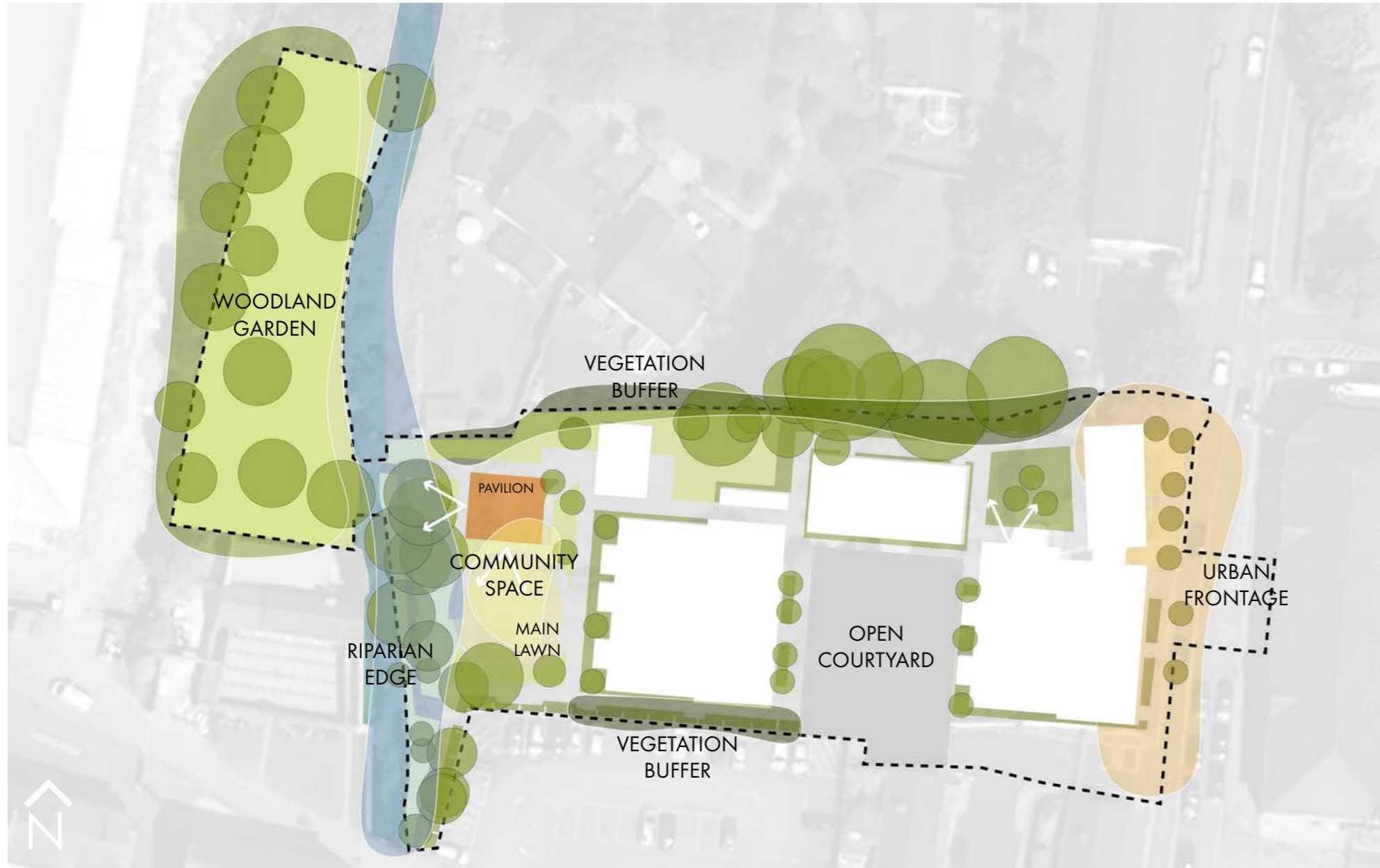


OPEN LAWN

03 Landscape Vision



03.1 Landscape Vision - Proposed Character Areas (Zoning)



The most dominant feature of the site is its unique green space; situated between a woodland garden which runs along the riparian edge, a central plain in its center which connects to the urban frontage of the site. From Sallins Road to the west of the site, the transition from urban to natural is a defining characteristic



COMMUNITY SPACE



WOODLAND GARDEN



COURTYARD



VEGETATION BUFFER



RIPARIAN EDGE



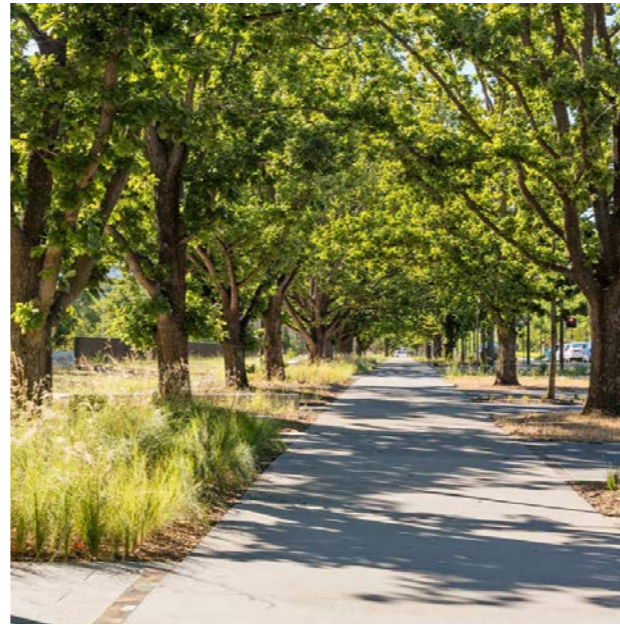
MAIN LAWN

Biodiversity



+

Accessibility



+

Community



Blurring the edges between Urban and Nature

The transitioning of spaces to remove physical barriers and blurring the edges by way of subtle landscape interventions encourages the idea of exploration and discovery.

Universally Accessible Design for All

Universally accessible design ensures that outdoor spaces are usable and enjoyable for people of all ages and abilities, incorporating features like smooth pathways, adequate seating, and clear signage. This approach promotes inclusivity and enhances the overall quality of public environments by addressing the diverse needs of the community.

Ensuring the Social Sphere

Community spaces in landscape design enhance the sense of belonging and well-being within a community, encouraging residents to connect with each other and their environment.

Biodiversity

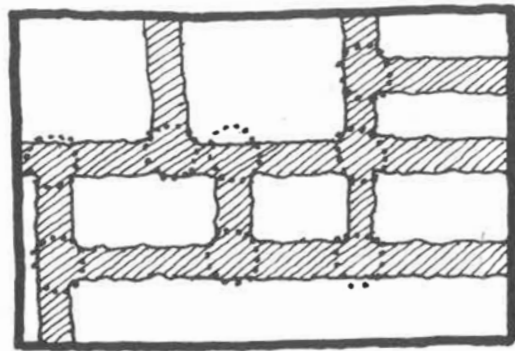
In Beaufort, Naas, Ireland, cultivating biodiversity is vital for fostering pollinator-friendly environments. By strategically planting diverse flora, including native species, along with considering wet planting at the riparian edge of the existing stream on site, local pollinators are not only supported but safeguard crucial ecosystems.

Furthermore, nurturing the existing hedgerow habitats further enhances biodiversity, providing essential corridors for wildlife, no matter the scale, and promoting ecological resilience in the region.

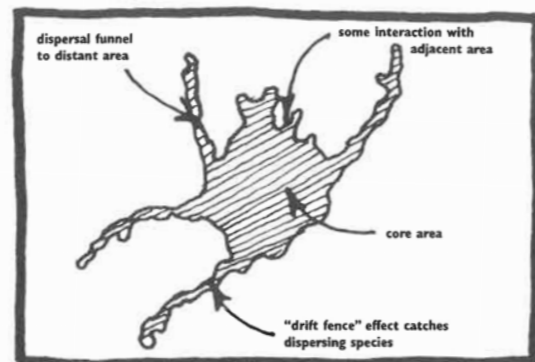


the establishment of pollinator friendly planting

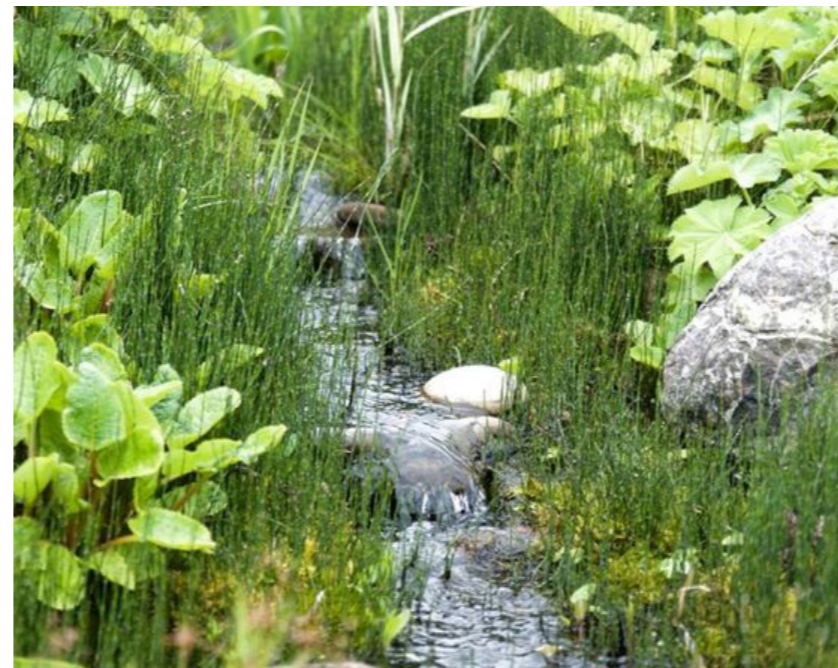
Ecological First Principles



Intersection Effect



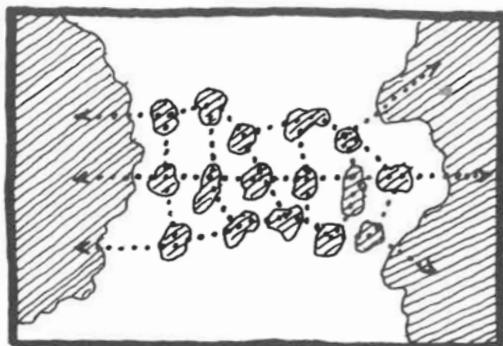
Ecologically "optimum" Patch Shape



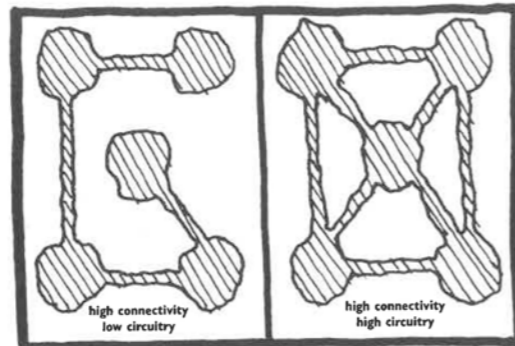
the consideration for wet planting at the riparian edge



the cultivation of hedgerow habitats



Cluster of Stepping Stones



Network Connectivity & Circuitry

Accessibility

Accessible design plays a pivotal role in fostering community and the creation of shared spaces, engaging far past just walkways and curbs. By prioritizing inclusivity and accessibility, the design caters to the needs of both diverse populations and different generations; bringing back a sense of belonging and connectivity often lost within the community.

Such spaces serve as vibrant hubs where people of all ages can interact and engage in true social integration. Thus, thoughtful design of slopes, ramps and tactile paving ensures not only physical accessibility but more significantly signals the commitment to inclusivity- empowering individuals to navigate the environment independently to enhance participation.



the creation of pedestrian friendly spaces



the significance of universally accessible design practices

Community

Designing social and community spaces in the landscape that incorporate elements such as community gardens, leisure seating and play areas, holds significant importance. These spaces serve as vital hubs fostering connectivity, interaction and a sense of belonging within the community.

Community gardens provide opportunities for shared engagement and responsibility, nurturing both physical and mental well-being while connecting with nature. Relaxed settings for conversation foster social cohesion and reduces feelings of isolation. Integrating play areas not only promotes physical activity and childhood development but also encourages intergenerational bonding.

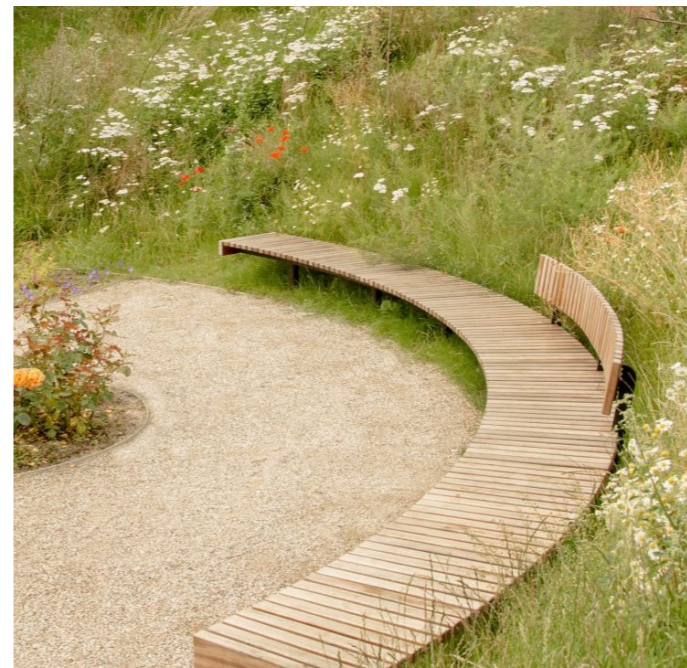
Moreover, such designs prioritize accessibility, ensuring that everyone, regardless of age, can benefit from these communal spaces, thus enhancing social equity and inclusivity within the built environment.



the creation of a community social space



the introduction of relaxed open areas



the design of outdoor seating spaces



the integration of recreational areas

03.6 Landscape Vision - Illustrative Masterplan



Legend

- 1 Street Frontage
- 2 Shared Surface
- 3 Rain Garden
- 4 Feature Planting
- 5 Great Lawn
- 6 Pavilion
- 7 Bridge
- 8 Woodland Garden
- 9 Bicycle Storage
- 10 Bin Storage

03.7 Landscape Vision - Connectivity



03.8 Landscape Vision - Open Spaces



03.9 Landscape Vision - Seating



03.10 Landscape Vision - Ecological Zones



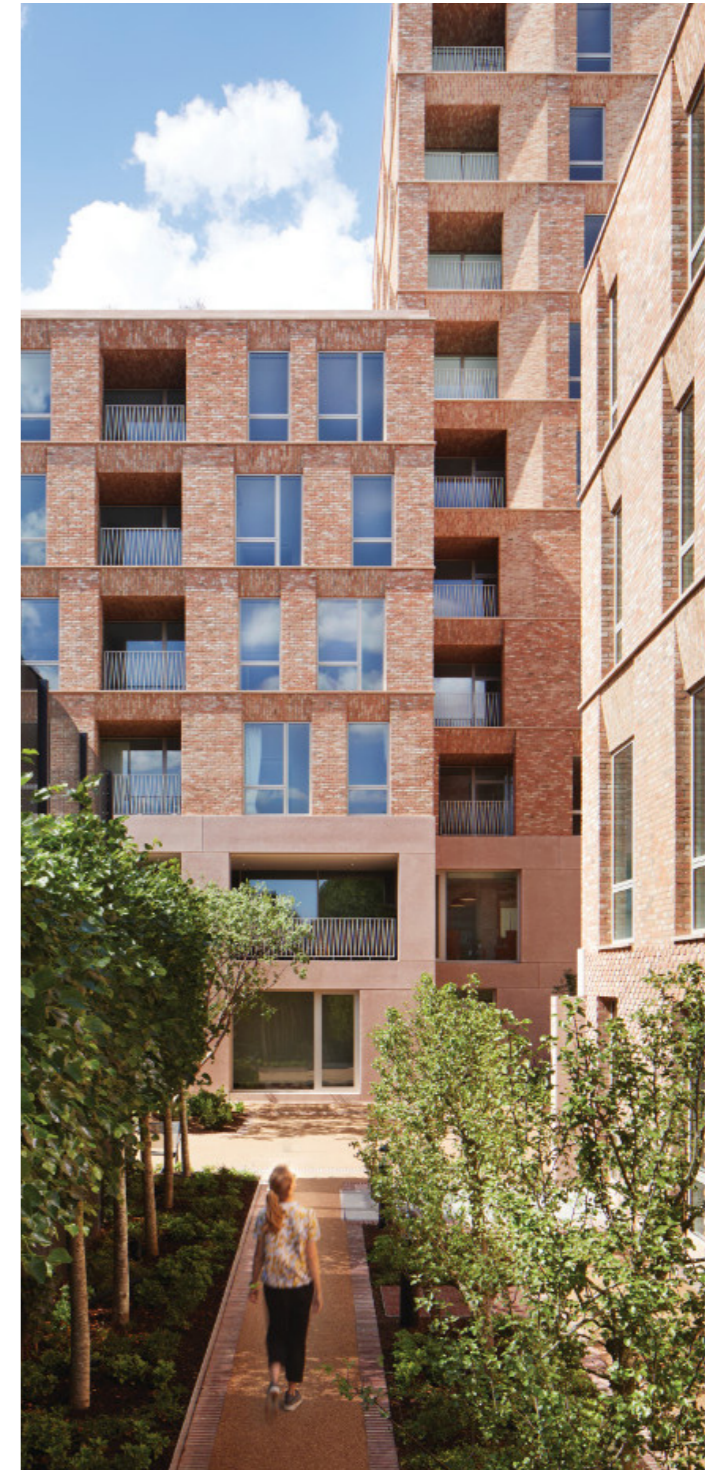
03.11 Landscape Vision - Bee & Bat Boxes



Street Frontage



planted edging



street planting

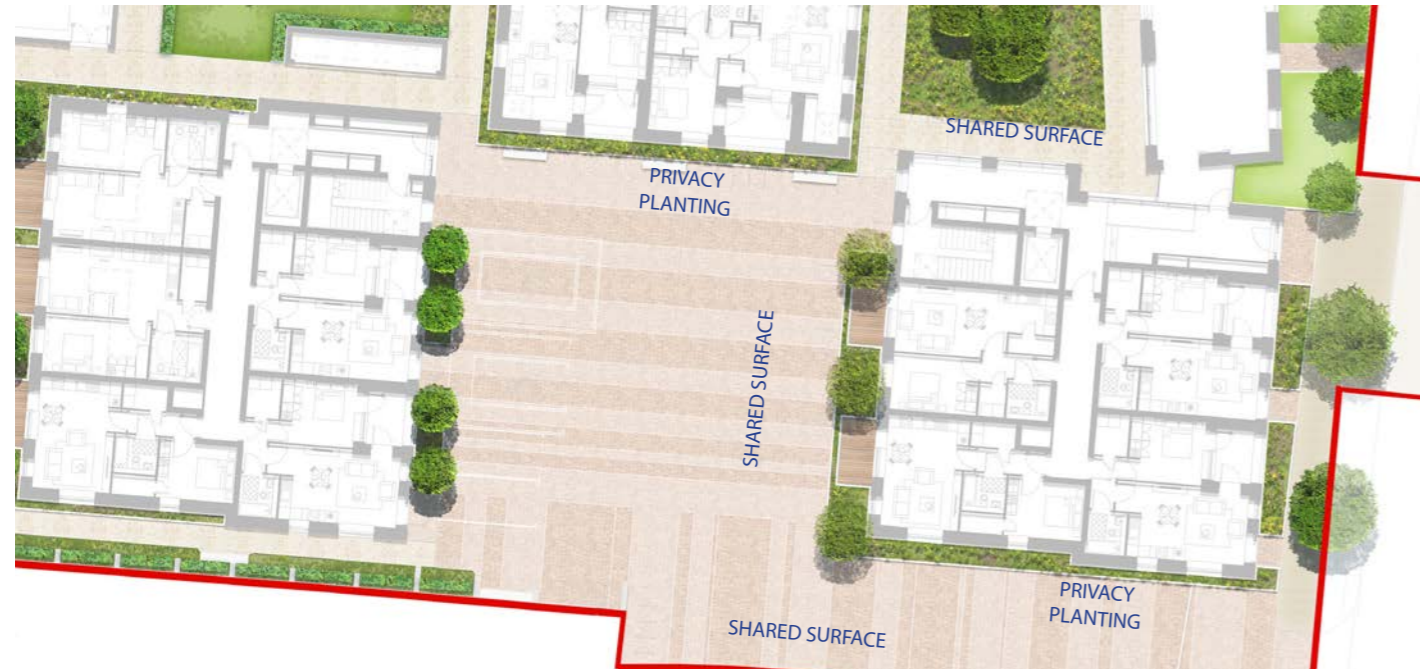


front gardens



seating

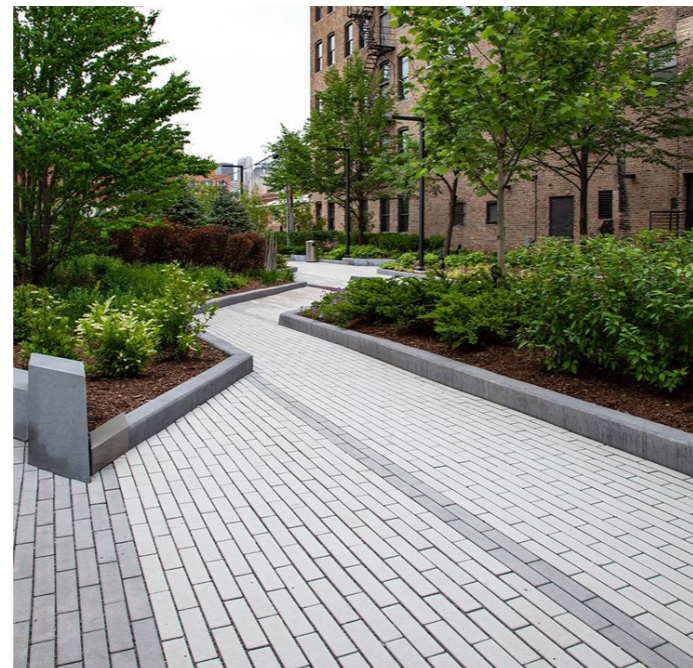
Shared Surface



shared surface



shared surface planting

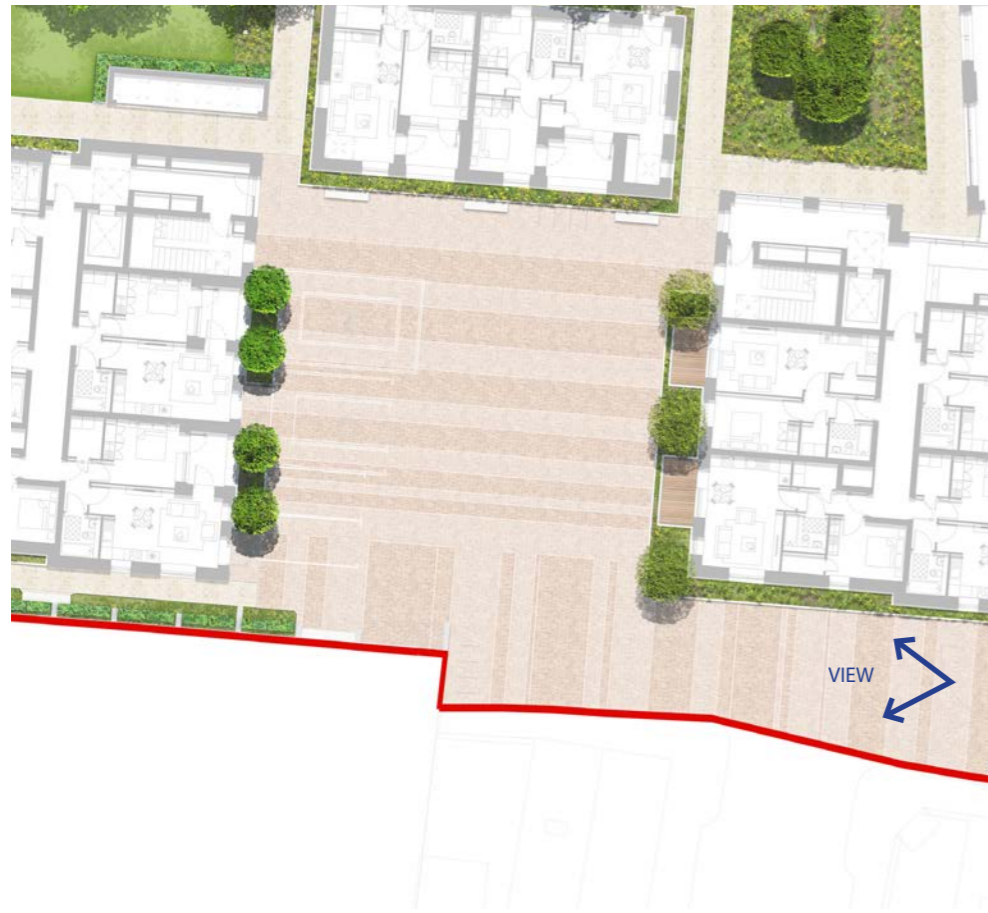


continuous paving



planted gardens from shared surface

Shared Surface



Rain Garden



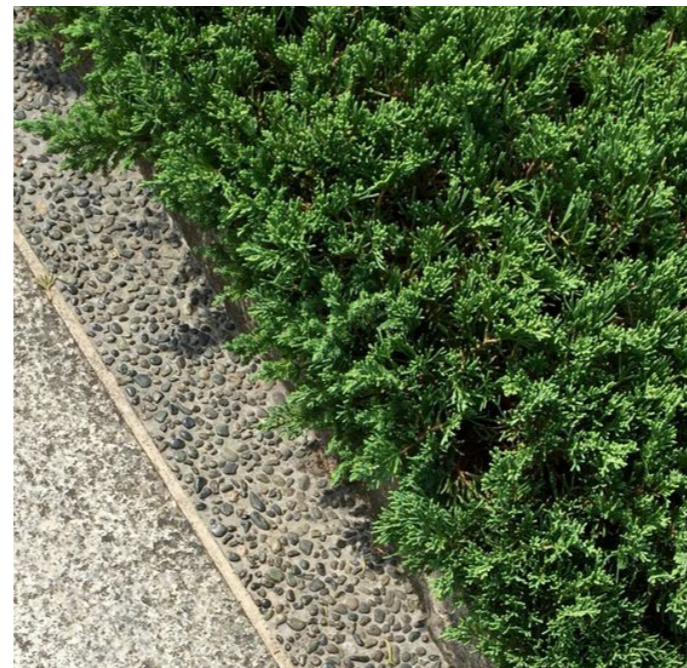
integration of paved seating areas



focal trees



soft pollinator-friendly planting

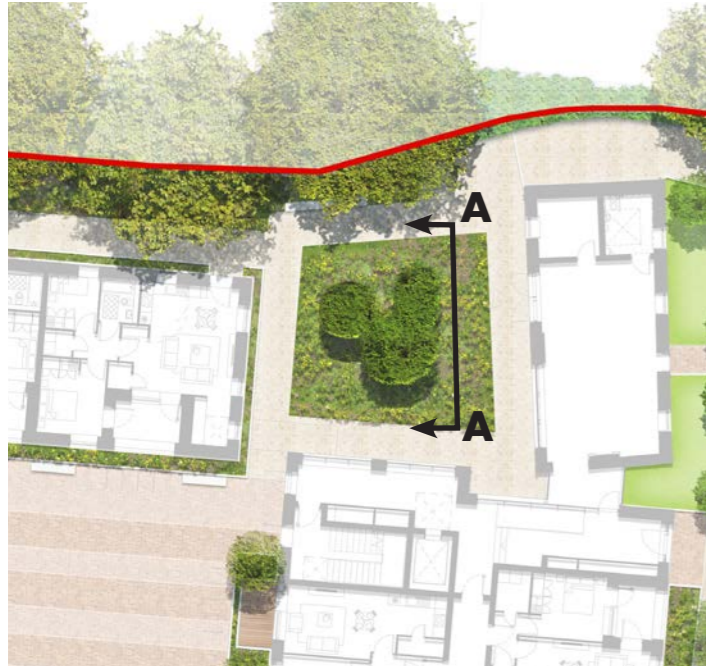


blending between hard and softscape



feature lighting

Rain Garden



SECTION A - A
THROUGH RAIN GARDEN



03.17 Landscape Vision - Focal Area: Courtyard



Edge Planting



Privacy Shrubs



Seating



Rain Garden Edge



Expressive Hardscape

Legend

- 1 Shared Surface
- 2 Open Space Courtyard
- 3 Parking
- 4 Planters
- 5 Privacy Hedge
- 6 Rain Garden
- 7 Bicycle Parking
- 8 Seating

Approach to Lawn



03.19 Landscape Vision - Focal Area: Lawn

Lawn



integration of planting and hardscape



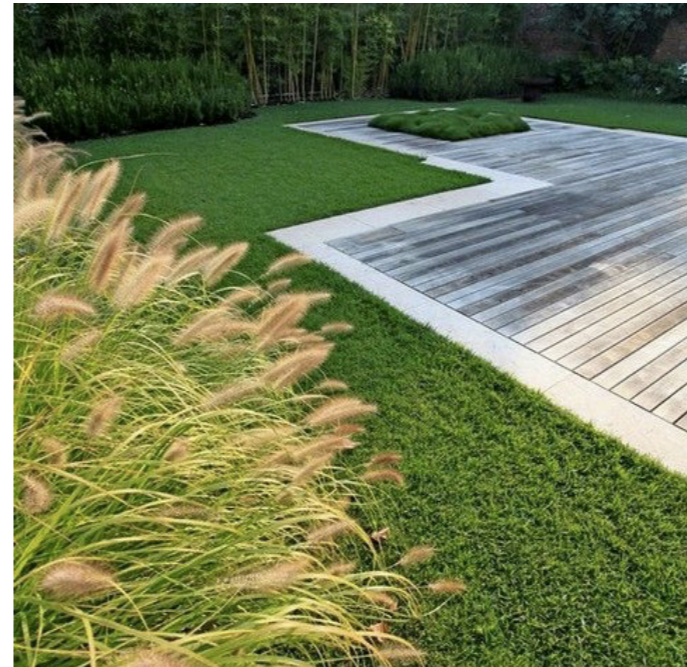
designed edging surrounding lawn



mounding for privacy and screening



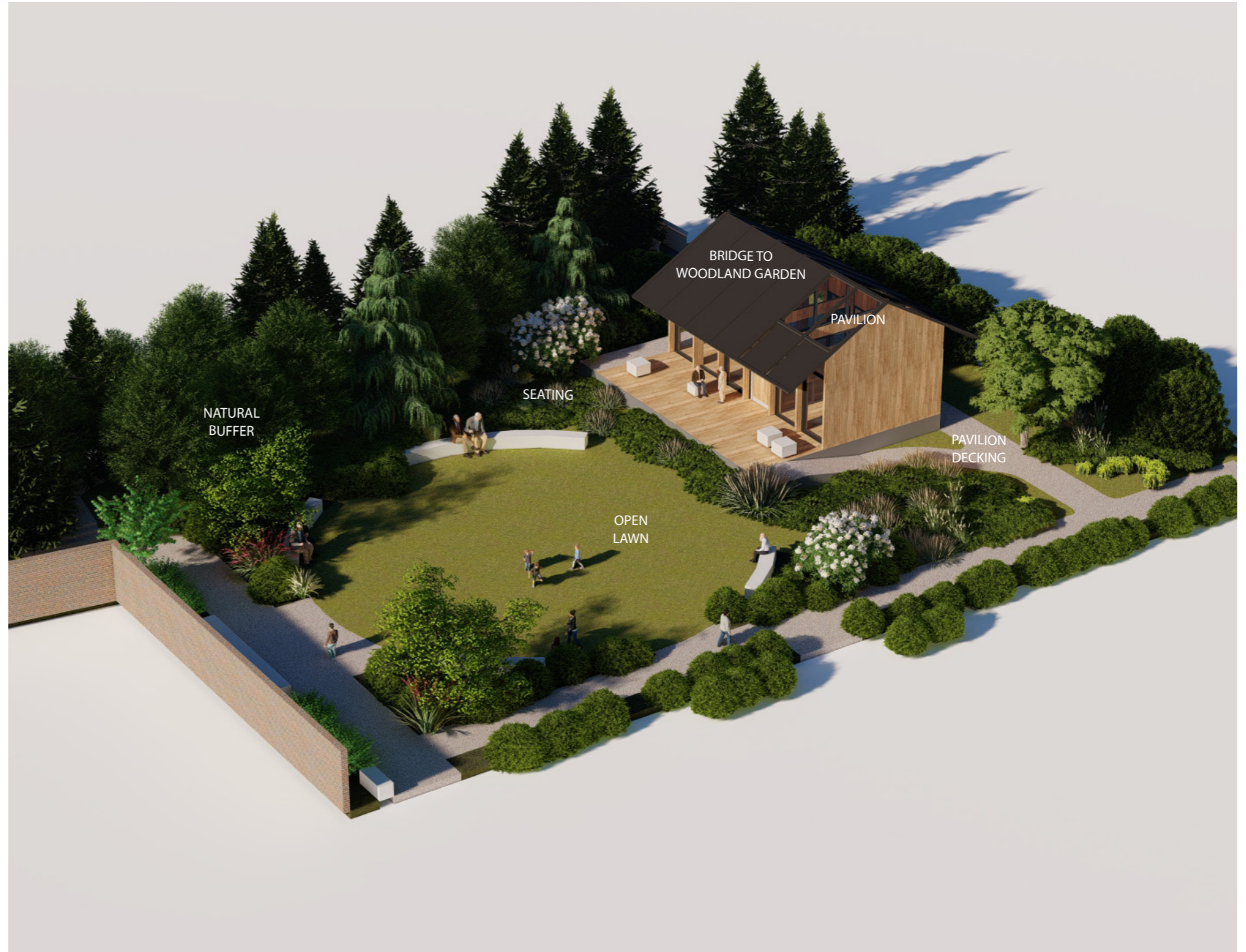
activity lawn for croquet



embedded hardscape paving



Lawn



03.21 Landscape Vision - Focal Area: Lawn Visualisation



Timber Pavilion



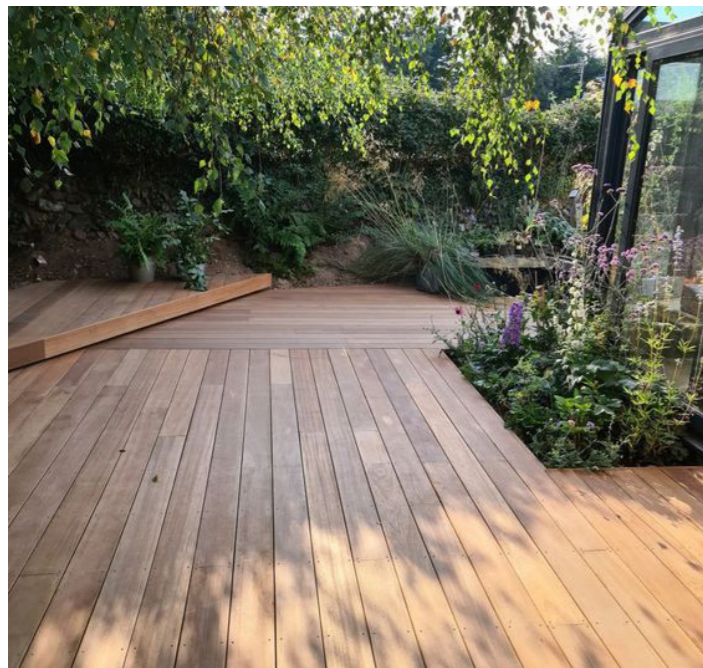
timber construction



skylights



bat roosting access



timber decking to lawn



natural finishes



adjacent community garden



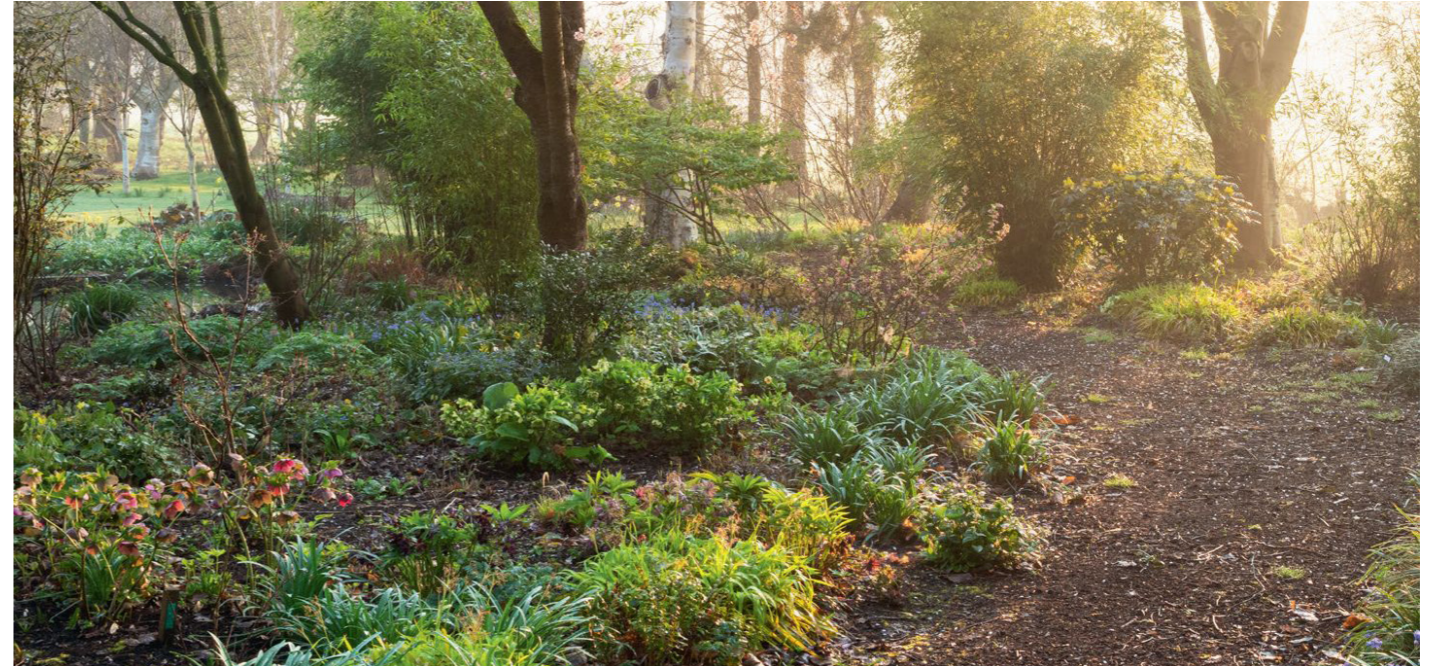
paved, planted path to pavilion



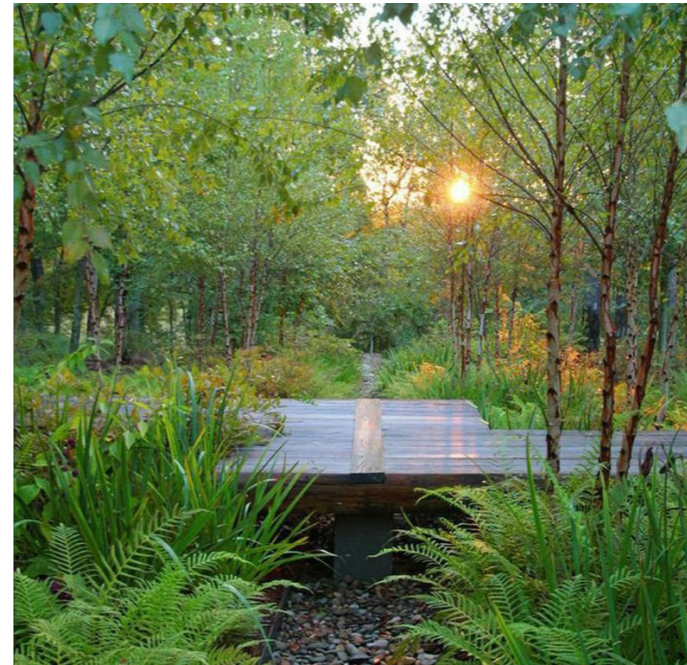
Woodland Garden



woodland trails



natural landscape



elevated walkway



biodiverse natural spaces

Bridge



integrative railing



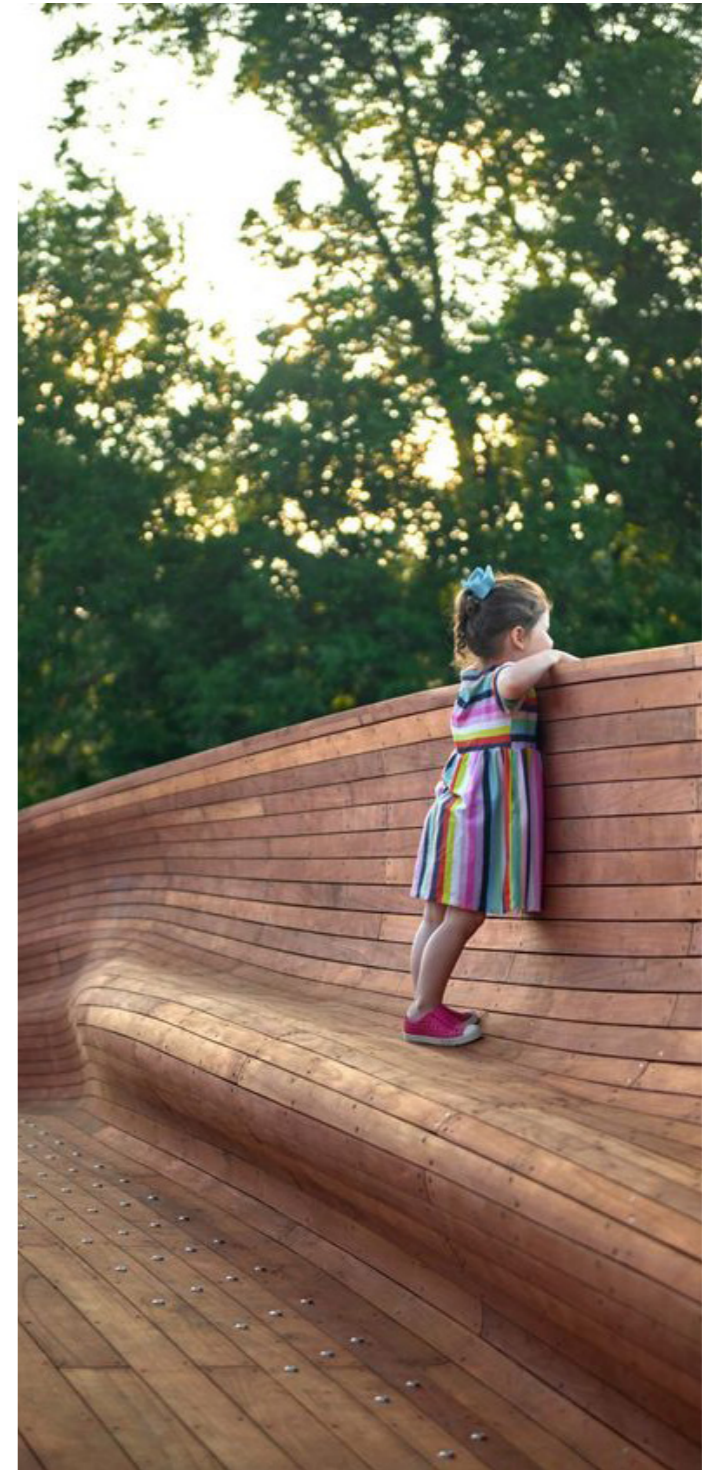
landscape bridging



footbridge approach



mixed materials



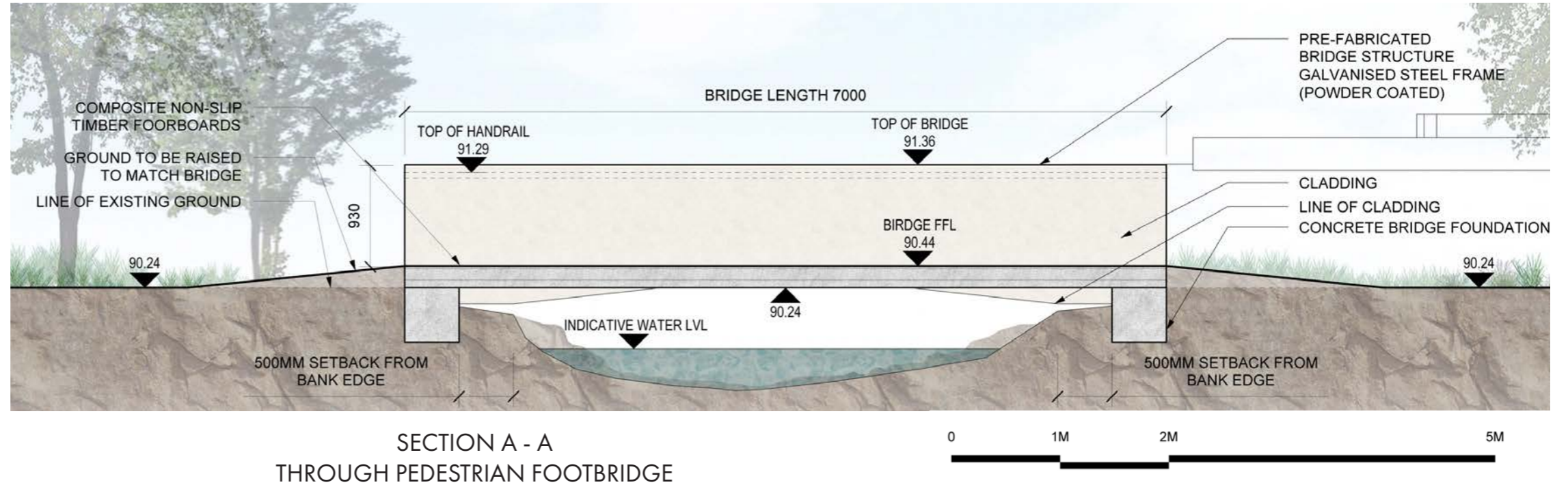
integrated viewing moment

Bridge

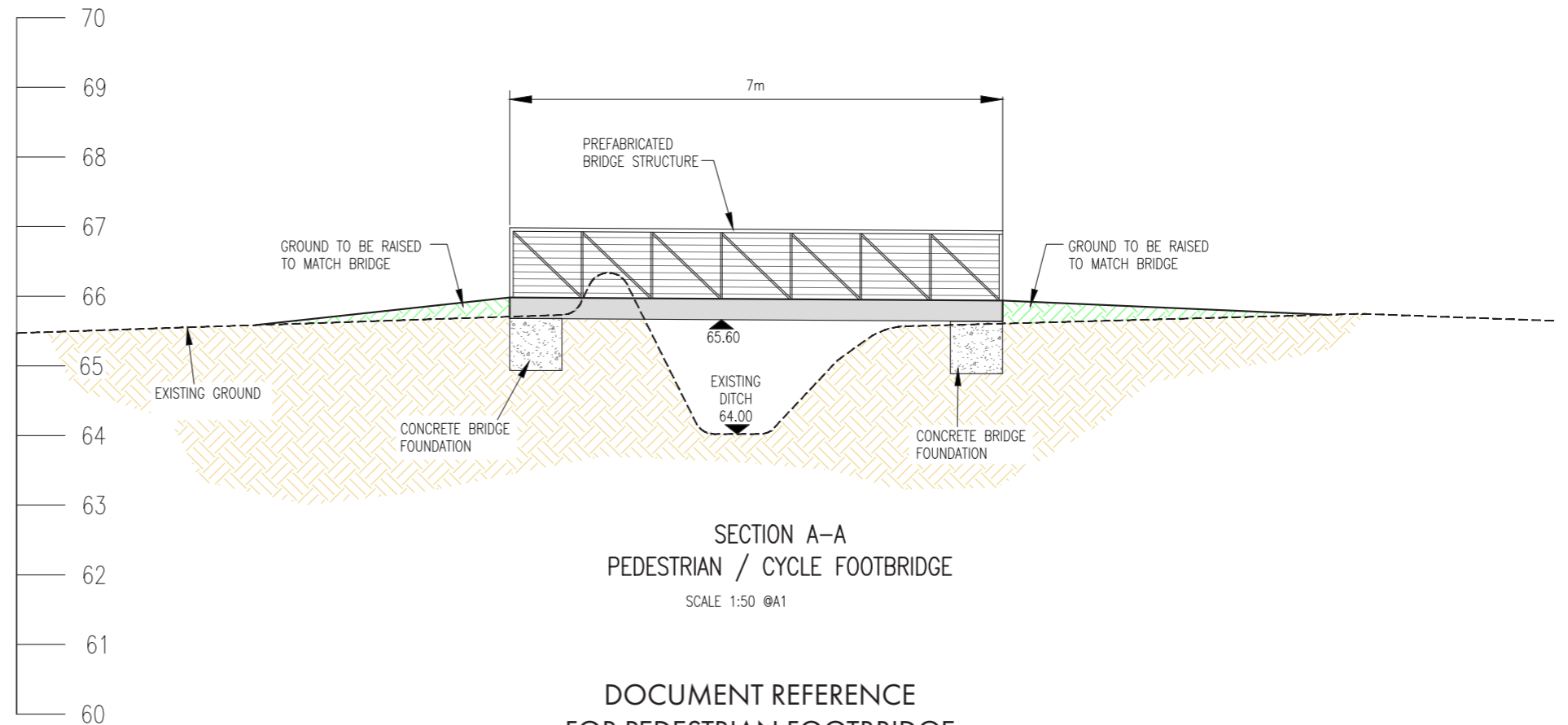


footbridge approach

Bridge



TYPICAL EXAMPLE OF PEDESTRIAN / CYCLE FOOTBRIDGE



DOCUMENT REFERENCE FOR PEDESTRIAN FOOTBRIDGE

04 Landscape Materials



04.1 Landscape Materials - Strategy

Hard Landscape

Landscape Plans and schedules included in the application, prepared by SRLA Landscape Architects includes a detailed schedule of proposed materials and levels, including delineation of paving, kerbs, benches, bollards and all hard landscape elements proposed.

The selection of hard landscape materials is determined by function but also to provide a cohesive palette of materials throughout. Materials are chosen for durability, but where practical are proposed to be constructed in a way which is sensitively integrated with lawn and soft landscape, in order to minimise the impact of hard landscape surfaces. Primary vehicular, pedestrian and cycle circulation are proposed as a durable, limited range of neutral materials with robust construction. Typically, roads in bituminous macadam and all other roads in a selected coloured or High Friction asphalt. Self-binding gravel and high quality paving are proposed for pedestrian routes in open spaces.

04.2 Indicative Hard Landscape Materials



Surface Finishes

The hard materials palettes have been selected to represent and respond to use and character of specific spaces. They will be durable and of high quality with patterning developed in the latter stages to indicate moments and celebrate thresholds.



High Quality Paving



Edge Treatment



Exposed Aggregate Concrete



Self Binding Gravel



Asphalt



Walls + Fences

The boundaries between the site both external and internal will be of high quality and provide a degree of visual transparency.

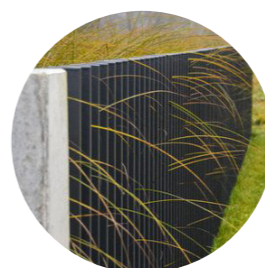


Walls



To boundaries + GF terraces

Fences



To secure boundaries (behind planting)

Green Walls



To screen

Furniture

Bins, bollards and seating have been selected as appropriate to the design language and surroundings within which they fit. these for the most part will be off the shelf products and specified accordingly.



Bike Stand



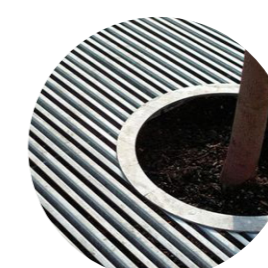
To bike parking

Bins



To pedestrian areas

Tree Grille



To trees in paving

Exercise



To fitness areas

04.3 Indicative Hard Landscape Materials

High Quality Paving to Public Realm

It is proposed to bring a sense of warmth to the streets by specifying buff coloured granite paving flags to the pedestrian areas in various sizes with a degree of variance through the grain of the stone.



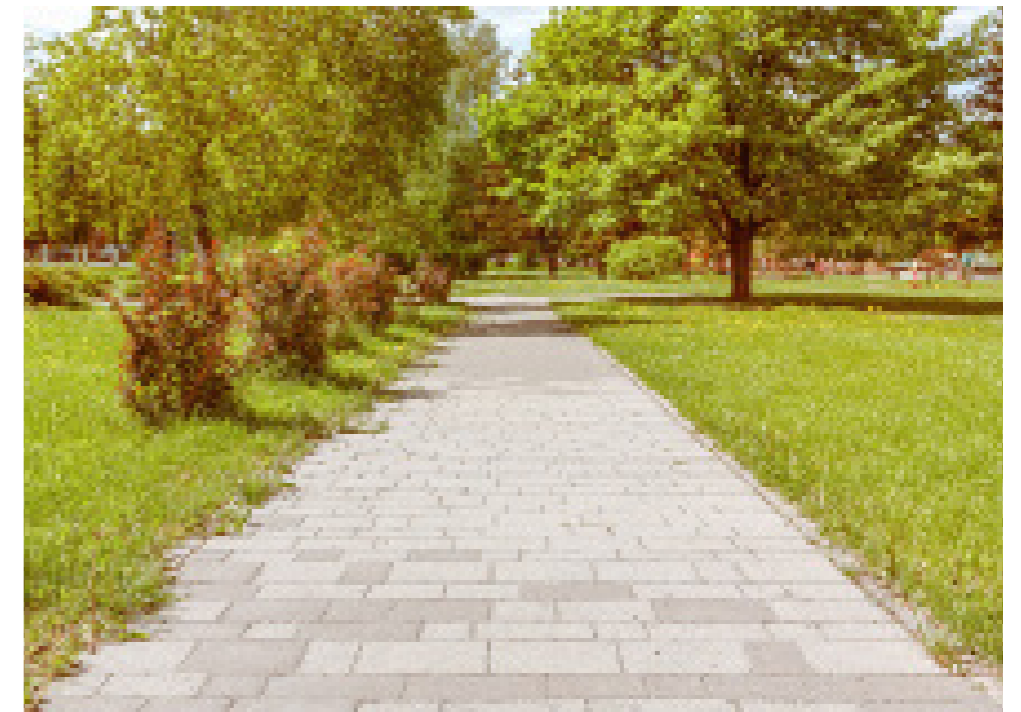
Courtyard Surface Materials

Paving proposals for courtyards should have a rustic feel to them using resin bound gravel.



Garden Paving Material

Highly durable Material and appropriate for the setting combination with natural elements.



05 Planting



05.1 Planting Strategy - Tree Planting

Native trees are from Tree Council approved nurseries.

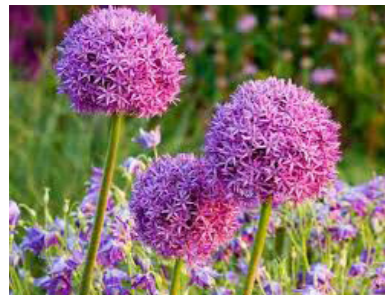
Wild flower seed mix purchased from an authentic Irish source.



Shade loving plants for Woodlands



Shade loving plants for Woodlands



Bulbs to add seasonal interest



Native trees planting including birches and pines



Shade loving plants for Woodlands



Woodlands with ferns understory

Woodland Tree Planting

Informed by the existing and formative tree planting and a native palette the tree planting will bleed into the site and grade out from north to south.

Street Trees + Small Feature Trees

Specimen tree planting will provide year long interest and beauty - landmarks in the landscape, to celebrate and identify with.

Wildflower & Shrub Planting

To enhance bio-diverse credentials wildflower planting will occupy edges and large swathes of the sites periphery along with shade tolerant understory planting.



Pinus sylvestris
Scots Pine



Sorbus aucuparia
Mountain Ash



Juniperus communis
Juniper



Magnolia grandiflora
Southern magnolia



Quercus robur
Oak (Pedunculate)



Pinus sylvestris
Scots Pine



Quercus petraea
Oak (Sessile)



Viburnum opulus
Guelder rose



05.2 The Pollinator Plan

The pollinator plan 2021-2025 has greatly influenced the planting palette and soft landscape strategy. This, combined with a selection of native plant species, will define the landscape design. Planting will educate and define public paths, distinguishing them from communal or private spaces.

Native Meadow

Meadows managed in the following way will allow bloom throughout the pollinator season. A further benefit is that bumblebees are provided with an undisturbed area for nesting. Over a number of years, the area will become more and more flower-rich with local species that are adapted to the site's conditions.



Perennial Flowers For Pollinators

Incorporate pollinator friendly perennial plants into the local community to provide food for pollinators from spring through to autumn.

Pollinator friendly perennial plants are excellent sources of pollen and nectar. They are much more attractive to bees when planted in blocks rather than as single plants. Having a pollinator friendly perennial bed is an excellent way to provide food for pollinators across their lifecycle.



Flowering Trees And Shrubs

Incorporate a mix of pollinator friendly trees and shrubs into the local community that will flower throughout the season. An orchard can be a wonderful addition for pollinators and the community.

It is important to priorities increasing native plants (trees, shrubs, wildflowers) across the landscape to provide food for pollinators.



Annual Flowers For Pollinators

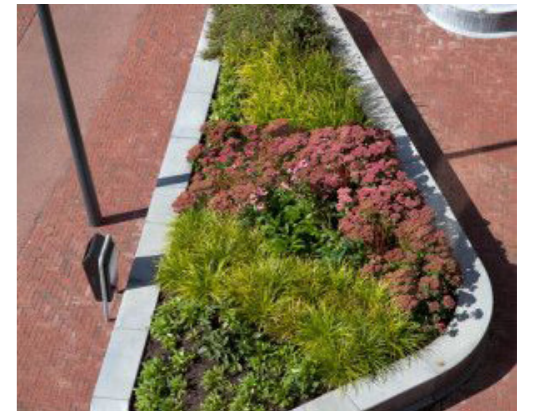
Work with local authorities to ensure a component of annual planting in parks is with pollinator friendly annual plants - single rather than double flowered varieties.

You should always try to select scented, single-flowered varieties. The block planting of these can be an excellent source of food for pollinators.



Pollinator Friendly Urban Planters

Identify some urban planters or hanging baskets where the standard annual bedding mix could be replaced by perennial pollinator friendly plants.



Training

Facilitate or execute local training sessions on pollinators and how to conserve them. Resources will be available for interested parties to deliver training on topics such as creating nest sites for wild pollinators, identifying common pollinator species, participating in the AllIreland Bumblebee Monitoring Scheme, and collecting, storing, and using local wildflower seed to improve areas managed as small grassy meadows in parks, schools, along greenways, and so on.



05.3 The Pollinator Plan

Hedgerows For Pollinators

Flowering hedgerows with hazel, willow, blackthorn, and hawthorn provide food for wild bees as they emerge from hibernation in spring. Bramble is a good source of food in the summer, and ivy in the fall. Bumblebees frequently nest in long grass around the foot of hedgerows.



Eliminate The Use Of Pesticides

Identify some instances where pesticide use may be eliminated. This could refer to streets or locations where your group is willing to take on manual weed management. The majority of herbicides are applied along edging or at tree bases where mowers cannot reach. Identify sections of south-facing edging that could not be sprayed to give solitary bee nesting sites.



Bee Hotels For Pollinators

Incorporate a limited number of solitary bee nest boxes into the community to attract cavity nesting solitary bees. Bee hotels can be valuable and effective awareness-raising tools, however actions 13 and 14 are superior methods for creating nest sites. In terms of reducing the chance of disease and predators harming the bees, a number of little hotels outperforms one large one.



Clover Lawns

Identify small areas where grass could be entirely replaced with a permanent clover mix. Red and white clovers will provide colour, and are a very important food source for bees.



Awareness

Advocate for the All-Ireland Pollinator Plan among local companies, urging them to create pollinator-friendly outdoor areas or provide sponsorship for local initiatives that support pollinators.



Signage

Install informative signs elucidating the significance of pollinators and detailing local efforts in accordance with the All-Ireland Pollinator Plan. Signage templates are available for download on the website.

