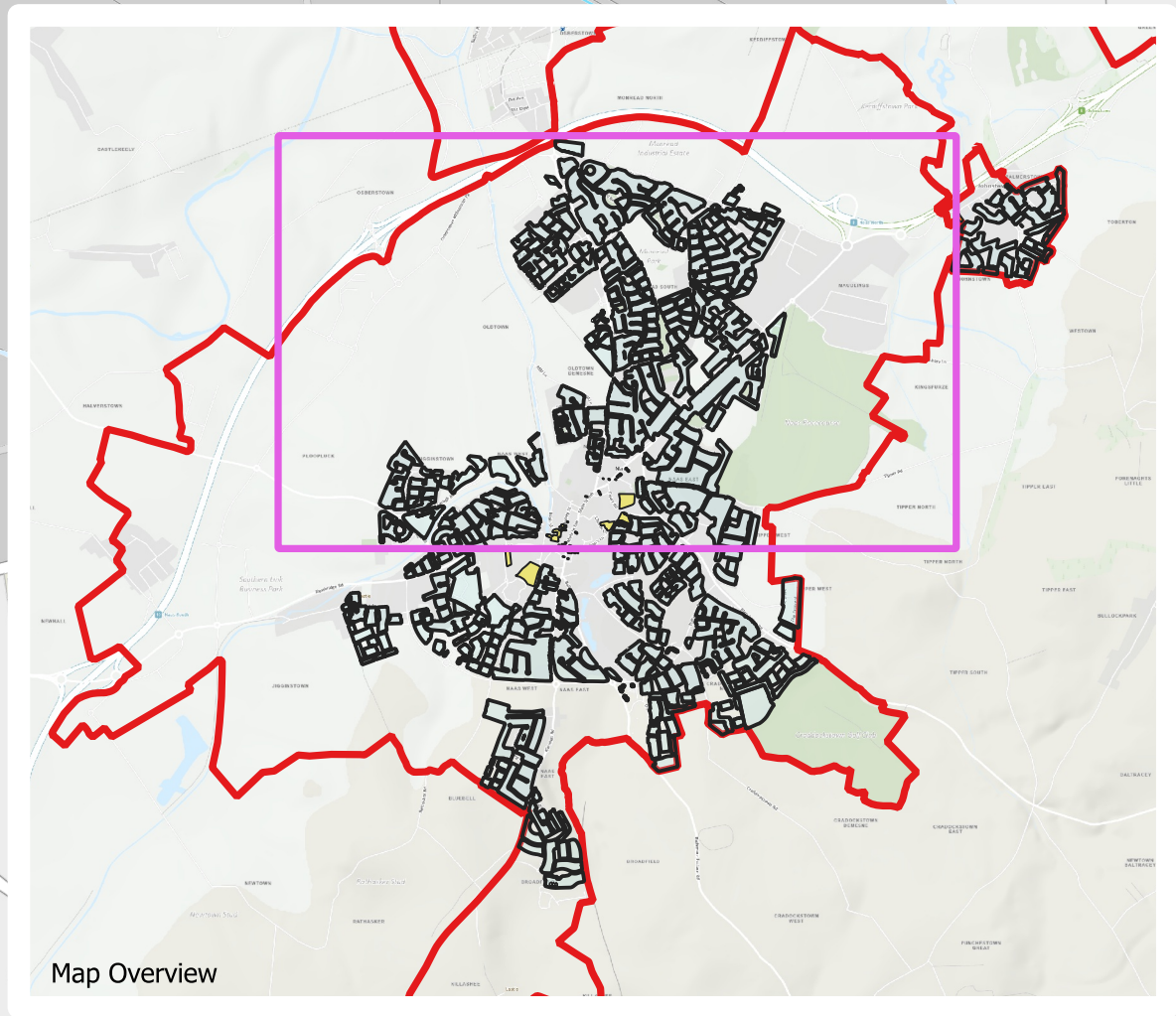



Naas North

Area of In-Scope Lands
on Map = 202.48Ha



Final Residential Zoned Land Tax Maps - 2026



Comhairle Contae Chill Dara
Kildare County Council

Note:
This Final Residential Zoned Land Tax map represents the outcome of the consideration of the local authority of land which complies with the relevant criteria and falls within scope for the application of the taxation measure.
Lands which were included in the draft maps (published on 1 February 2025), are included in these final maps, except where:
• Lands in relation to which landowner submissions challenging the local authority's decision that the lands satisfied the relevant criteria, were successful, including nearby sites with the same characteristics.
• Lands subject to local authority appeal determinations to retain the lands on the map, but were appealed to An Coimisiún Pleanála, and where the determination of the local authority was not upheld by An Coimisiún Pleanála.
• Lands subject to any changes to zoning which have occurred since 1 January 2025 as a consequence of the adoption of new development plans or variations, or where a local area plan forms the basis for land use zonings, the adoption or amendment of an LAP, such that the land no longer meets the criteria for inclusion.
• Lands within settlements where the Úisce Éireann's capacity registers, published in August 2025, have identified a change in status since 2024 from green or amber to red for wastewater or water supply treatment such that the settlements or lands would no longer meet the criteria.
Where submissions were received by the local authority on lands included on the draft map and where a determination was made by the local authority to retain the lands; subsequently an appeal was made to An Coimisiún Pleanála, and the Board has not reached a decision in respect of an appeal by 30 days prior to the publication of the final map on 31 January 2026, the land in question shall be included in the final map. Where these decisions are made by 1 January 2026, they will be reflected on the draft revised final map for 2027, published on 01 February 2026.
These maps identify all the land considered to be in scope in Kildare County Council's functional area, provide overall area in hectares, and the date which each parcel of land was considered to be in scope, if after 1 January 2022.

Legend:

Land Use Zoning Type

Residential

Mixed Use

Date Land Came Into Scope (if after 1st January 2022)

28/01/2023

06/12/2023

31/12/2023

25/12/2024

31/12/2024

Stage	Date	Description
Final	31/01/2026	Final RZLT Map Published

Naas North

100200300400 m

Scale: N.T.S.	Map Ref: RZLT-KELA-F08	
Date: January 2026	Drawing No.: 200/25/1519	
Drawn By: C.Fitzpatrick Date 27/01/2026	Checked By: M. O'Loughlin Date 27/01/2026	Approved By: A Granville Date 27/01/2026
Tailte Éireann data reproduced under license number CYAL50510767 © Tailte Éireann – Surveying.		