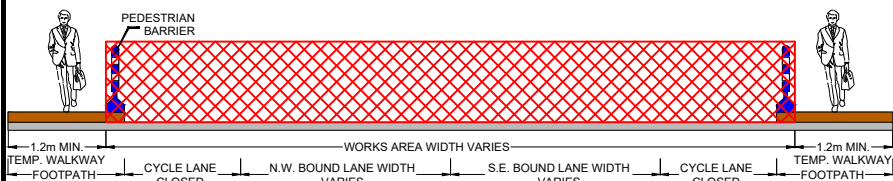


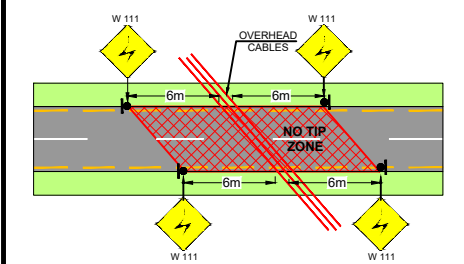
R148, MILL STREET, PARSON STREET, MAIN STREET, MAYNOOTH, CO. KILDARE - ROAD CLOSURE TTM LAYOUT

SECTION A-A

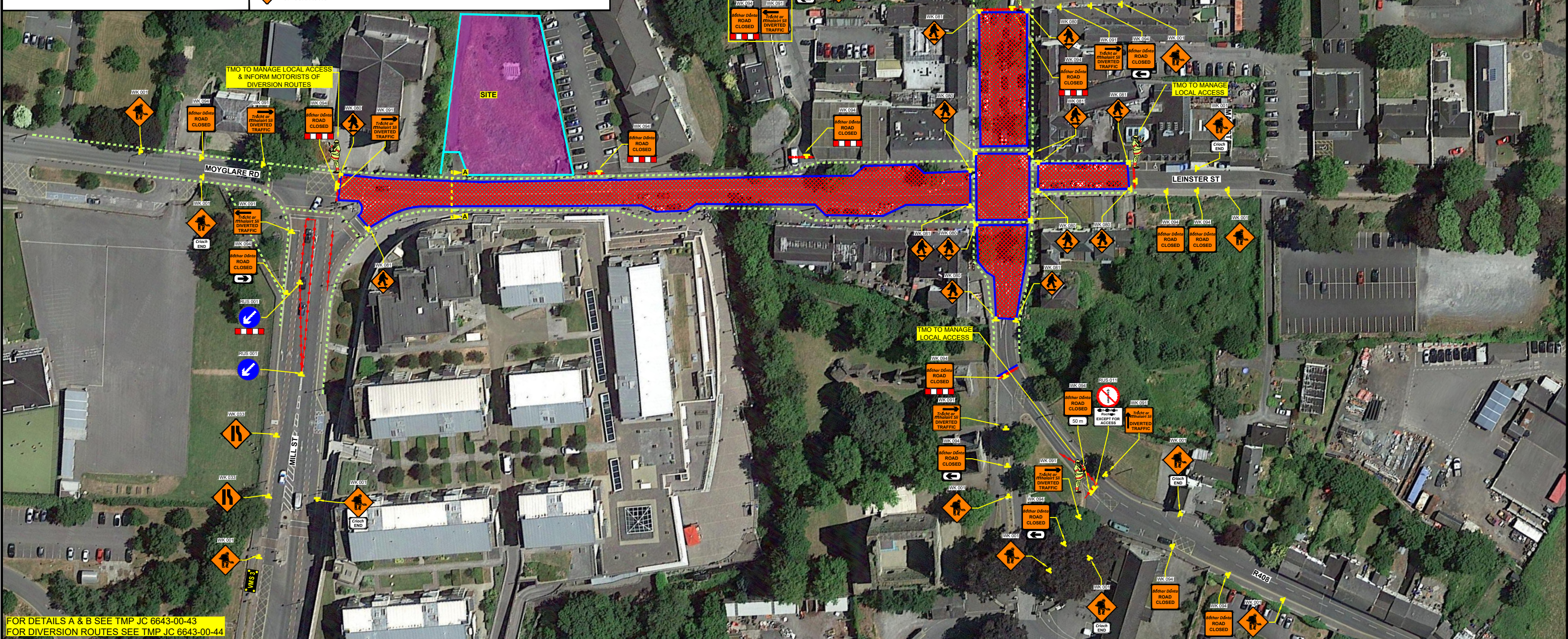
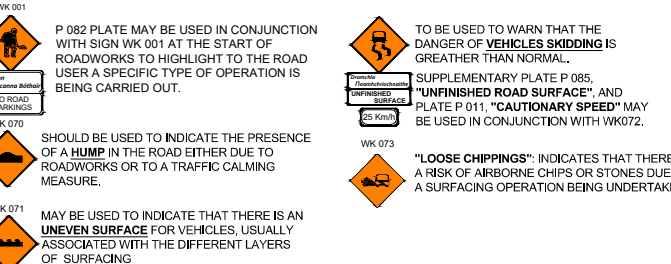


VMS SIGNS TO BE USED IN ADVANCE OF THE WORKS TO INFORM MOTORISTS OF WORKS LOCATION AND DIVERSION ROUTE. VMS SIGNS HAVE TO BE PLACED 2 WEEK IN ADVANCE AND FOR DURATION OF THE CLOSURE. THE NUMBER OF MESSAGES AND LOCATION TO BE DECIDED BY THE CONTRACTOR AFTER LIAISING WITH LOCAL AUTHORITY;

OVERHEAD CABLE DETAIL



TEMPORARY SURFACE ARRANGEMENTS



FOR DETAILS A & B SEE TMP JC 6643-00-43
FOR DIVERSION ROUTES SEE TMP JC 6643-00-44

DESIGN PARAMETERS				SAFETY ZONE			TEMPORARY SIGNS				CONE SPACING AND SIZE			RATE OF TAPER		LAMP SPACING		TRAFFIC MANAGEMENT SYSTEM		
Road Lvl(Sub)	Roadworks Type	Speed Limit (km/h)	Min. Lane Width (m)	Longitudinal (m)	Lateral (m)	Set Back (m)	Distance (m)	Number	Min. Size (mm)	Sign Visibility (m)	Longitudinal (m)	At Tapers (m)	Min. Height (mm)	Taper at H/ S (m)	Taper at Lane (m)	At Tapers (m)	Longitudinal (m)	Method	Coned Area Length (m)	Max. Traffic Flow (veh/h)
1(iv)	A	50	3.00	15	0.5	-	20	3	600	60	6	3	750	1 in 10	1 in 10	6	12	Road Closure	n/a	n/a
1 (iii)	A	50	3.00	5	0.5	-	20	2	600	50	3	1	750	1 in 5	1 in 5	6	6	Road Closure	n/a	n/a

1) ALL INFORMATION CONTAINED IN THIS DRAWING SHOULD BE CHECKED AND VERIFIED BY CONTRACTOR PRIOR TO ANY STAGE OF CONSTRUCTION.

2) ALL WORKS ARE TO BE CARRIED OUT IN ACCORDANCE WITH LOCAL AUTHORITY REQUIREMENTS AND ARE TO BE INCLUDED IN THE SITE-SPECIFIC SAFETY & HEALTH PLAN.

3) A SITE-SPECIFIC RISK ASSESSMENT SHALL BE CONDUCTED PRIOR TO IMPLEMENTING THE TEMPORARY TRAFFIC MANAGEMENT PLAN TO ENSURE THAT THE ACTUAL SITE CONDITIONS ALIGN WITH THOSE CONSIDERED DURING THE DESIGN PHASE FOLLOWING SUBMISSION

4) CONTRACTOR SHALL BE RESPONSIBLE FOR THE PROVISION OF RAMP ACCESS AT ANY CHANGE IN ROAD SURFACE LEVEL WHERE TRAFFIC RUNS ON A TEMPORARY SURFACE.

5) THIS TRAFFIC MANAGEMENT PLAN MAY ONLY BE IMPLEMENTED BY A TTOS WHO MUST CARRY OUT A RISK ASSESSMENT BEFORE IMPLEMENTATION. TTOS MUST BE IN POSSESSION OF CSCS CARD "SIGNING, LIGHTNING AND GUARDING AT ROAD WORKS" CONSTRUCTION REGULATIONS 2006.

6) EXACT SIGNS POSITIONS TO BE AGREED ON SITE.

7) SITE INSPECTIONS AND MAINTENANCE OF THE TRAFFIC MANAGEMENT LAYOUT IS TO BE CONDUCTED ON A DAILY BASIS TO ENSURE THE SAFETY AND INTEGRITY OF THE DESIGN.

8) ALL TEMPORARY FOOTWAYS MUST HAVE A GOOD QUALITY, EVEN SURFACE AND BE MAINTAINED FREE FROM OBSTRUCTION.

9) PEDESTRIANS TO BE PROTECTED FROM WORKS AREA BY PEDESTRIAN BARRIER SYSTEM.

10) TM OPERATIVES TO MAINTAIN CLOSURE, MARSHAL PEDESTRIANS AND INFORM DRIVERS ABOUT DIVERSION ROUTES.

11) RESIDENTS TO BE INFORMED BEFORE WORKS COMMENCE.

12) RESIDENTS TO BE INFORMED BEFORE WORKS COMMENCE.

LEGEND

- TRAFFIC CONES
- SIGN LOCATION
- WORKS AREA
- PEDESTRIAN BARRIER
- PEDESTRIAN ROUTE
- EXISTING SITE
- VARIABLE MESSAGE SIGN

GARY KEVILLE TRAFFIC MANAGEMENT LTD.
Rosemount Business Park, Dublin 11, Co. Dublin, Ireland
Tel: (+3531) 667 4322; Email: info@gktm.ie
Visit us at: www.gktm.ie

DESIGNED: SS **SCALE:** NTS
DRAWN: SS
VERIFIED: VB **DATE:** 08-09-2025
APPROVED: VB

PROJECT TITLE: R148, MILL STREET, PARSON STREET, MAIN STREET, MAYNOOTH, CO. KILDARE
DRAWING NAME: ROAD CLOSURE TTM LAYOUT
STAGE: CONSTRUCTION
DWG. No.: JC 6643-00-42
REV: 0

Rev. No.: Revision Details
Rev. Date: Designed: Drawn: Verified: Approved:

Copyright Notes:
THIS DRAWING IS THE PROPERTY OF GARY KEVILLE TRAFFIC MANAGEMENT.
THE DESIGN INFORMATION CONTAINED HEREIN IS STRICTLY CONFIDENTIAL.
THIS DOCUMENT IS NOT TO BE USED, REPRODUCED, DISCLOSED OR CIRCULATED IN WHOLE OR IN PART WITHOUT THE PRIOR WRITTEN CONSENT IN EACH INSTANCE OF GARY KEVILLE TRAFFIC MANAGEMENT.
© GKTm 2025