

Alignment Segment AB1

The 1798 monument is positioned within an archaeological enclosure. The centre to be a clear circular form. The nearby seat to be replaced or stained /painted in oak. A QR code located at the seat to provide information on the trail and in particular the archaeological enclosure and the local historical significance of 1798.

The gateway to the alignment to be clearly marked with a 'Quiet Road Lána Ciúin; gateway sign and signage indicating shared surface to be softened in with low *Hyacinthoides non scripta* native bluebells. The gateway sign, as in the example below, to mark the beginning of the trail with lower key signage on oak posts, right, to indicate the trail as it progresses from the entry point



Bluebell on the roadside edge, *Hyacinthoides non scripta*



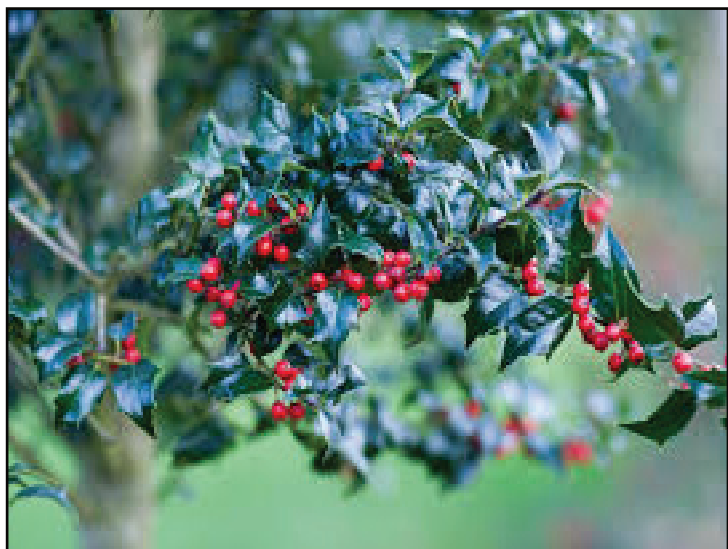
Guelder rose, *Viburnum opulus*.



Seasonal interest along the trail autumn presentation of Guelder rose, *Viburnum opulus*



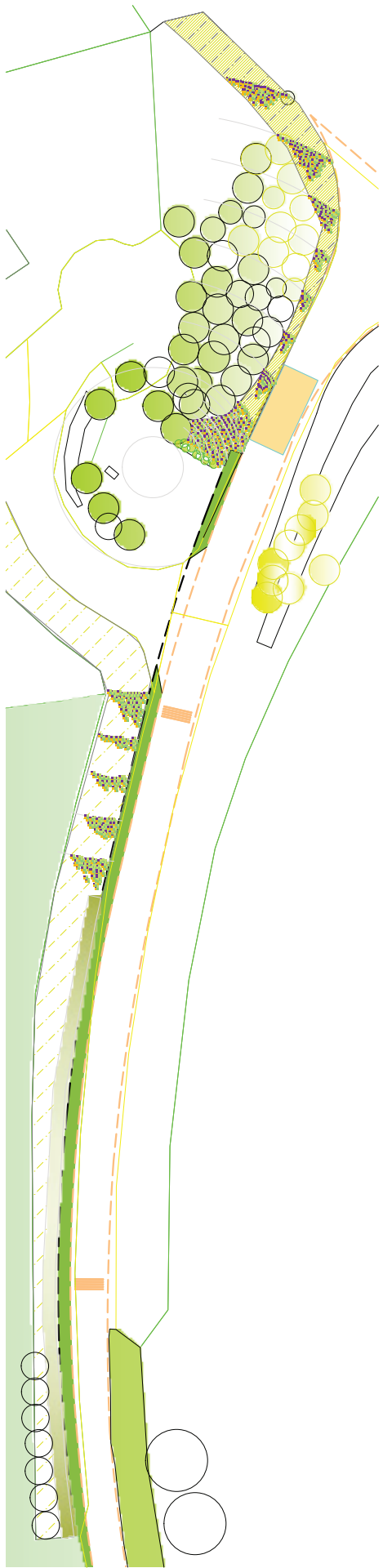
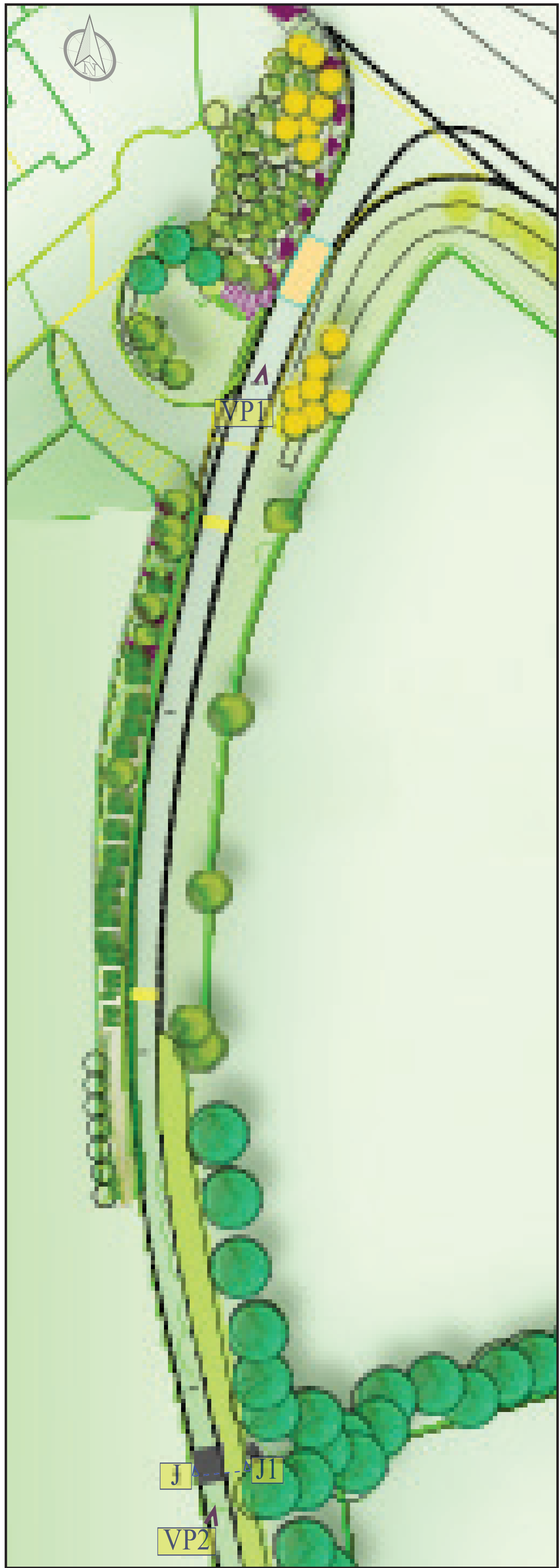
Spindle, *Euonymus europaeus*



Native holly, *Ilex aquifolium*



Some vertical emphasis and softening to be achieved from native *Alnus glutinosa* and *Betula pendula*



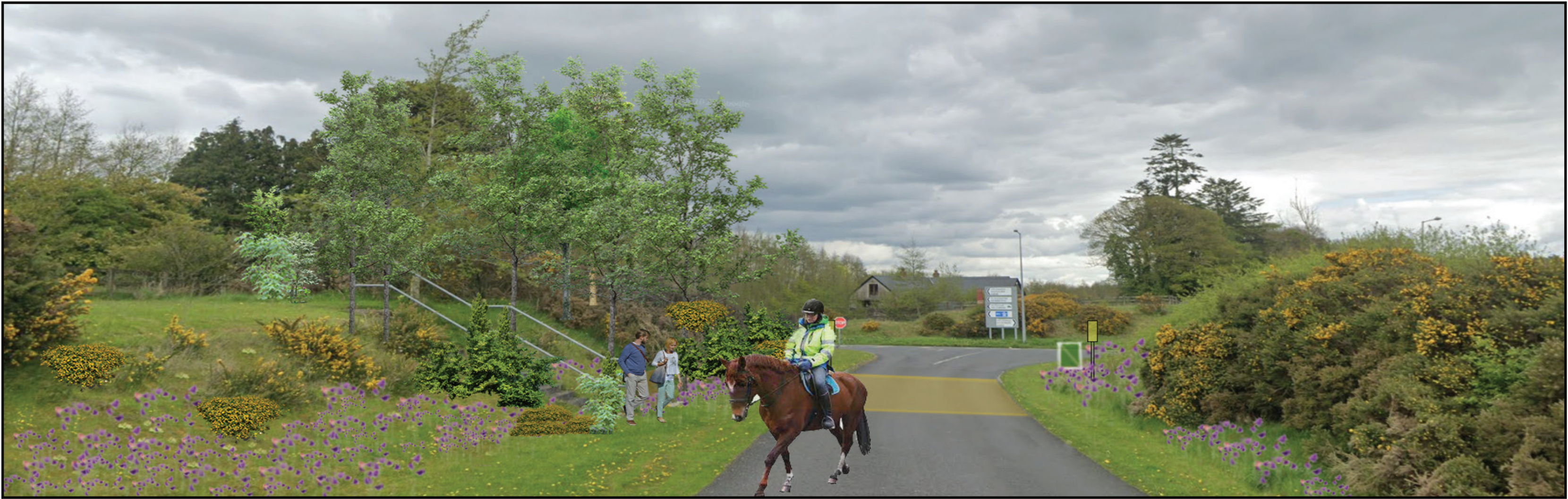
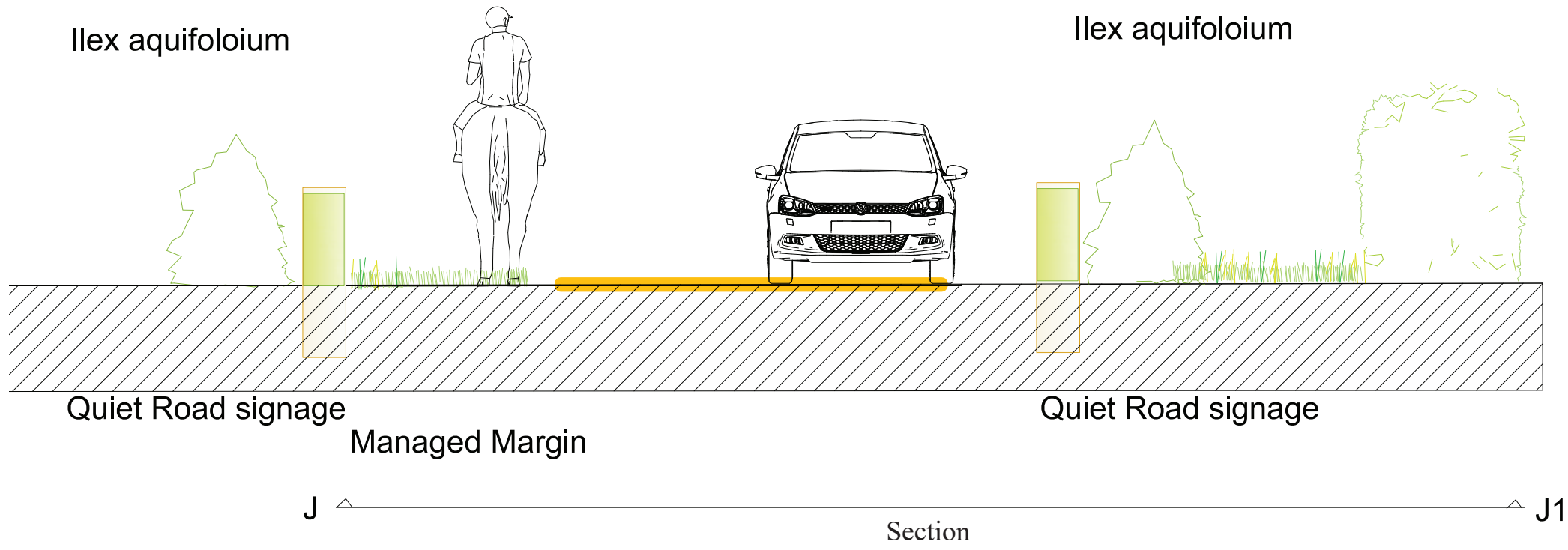
Respecting the location of the archaeological enclosure and to improve the presentation at the entry point, damaged and burnt gorse to be cut back or removed with a planting pattern radiating from the centre of the enclosure. Native low planting to complement gorse and reduce the dependence on gorse for presentation and planting biodiversity, holly to soften the appearance of the existing handrails and steps. Swathes of snowdrops and bluebells to also emphasise the radial theme and to provide strong visual introduction to the trail and varied seasonal interest. Bulb planting, cow slips, primroses, yellow rattle and low semi natural grassland species to ensure road sight lines are protected with softening holly, birch, alnus, guelder rose, spindle and fresh gorse radiating up from the sight lines to the edge of the enclosure.



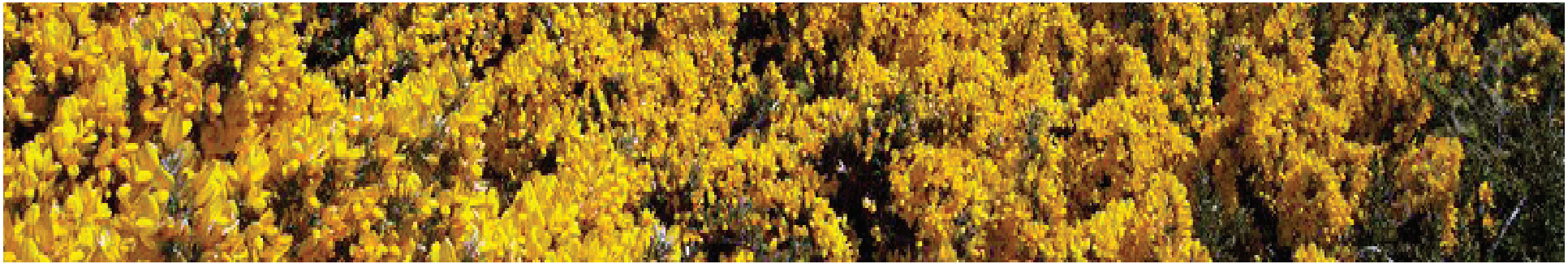
Similar gateway entry point demarcation at Long Lane, Yorkshire



Current willow plant material on the curve of the bend to be taken back and new managed margin allowed for. Woven willow spiling to provide an edge to the margin and a managed habitat that will allow for connectivity between hedgerow segments as in the example below.



VP1 above. Photomontage of the trail looking towards the gateway with increased radial planting in colourful native material. The centre of the enclosure to be open with a defined radius allowing for softening of the existing steps and handrail. Gorse to be removed or cut back as appropriate to ensure a bright colourful appearance as below in spring with neat evergreen appearance in winter.



Project : Old Kilcullen Heritage Trail
Drawing ; Alignment Segment AB1
Drawing No. OKSAB101
Drawn by; GH
Scale ; 1 to 500, 1 to 750, 1 to 50, NTS
Date : 5/12/23



www.hayesryan.com
Kilmead, Athy, Co. Kildare.
info@hayesryan.com
086 2219021
Tel 059 8626093